

# NONLINEAR CONTROLLER FOR A MODIFIED DESIGN OF THE BALL & BEAM SYSTEM

Oscar Salas, Samer Riachy, Jean-Pierre Barbot

► **To cite this version:**

Oscar Salas, Samer Riachy, Jean-Pierre Barbot. NONLINEAR CONTROLLER FOR A MODIFIED DESIGN OF THE BALL & BEAM SYSTEM. ASME, ESDA 2012, Jul 2012, Nantes, France. 2012. <hal-00673432>

**HAL Id: hal-00673432**

**<https://hal.inria.fr/hal-00673432>**

Submitted on 23 Feb 2012

**HAL** is a multi-disciplinary open access archive for the deposit and dissemination of scientific research documents, whether they are published or not. The documents may come from teaching and research institutions in France or abroad, or from public or private research centers.

L'archive ouverte pluridisciplinaire **HAL**, est destinée au dépôt et à la diffusion de documents scientifiques de niveau recherche, publiés ou non, émanant des établissements d'enseignement et de recherche français ou étrangers, des laboratoires publics ou privés.

ESDA2012-82147

## NONLINEAR CONTROLLER FOR A MODIFIED DESIGN OF THE BALL & BEAM SYSTEM

**Oscar SALAS**  
ECS-Lab/ENSEA  
EA-3649. 6 av. du Ponceau, 95014  
Cergy-Pontoise, France.  
Oscar-Salvador.Salas-Pena@ensea.fr

**Samer RIACHY\***  
**Jean-Pierre BARBOT**  
ECS-Lab/ENSEA & INRIA/Non-A.  
EA-3649, 6 av. du Ponceau, 95014  
Cergy-Pontoise, France  
Samer.Riachy@ensea.fr, Jean-Pierre.Barbot@ensea.fr

### ABSTRACT

*The global stabilization of the classical ball & beam has been approached in the literature through saturated control which imposes restrictions on the reactivity of the closed loop. In this work a modified design for the classical ball & beam system is presented. The beam is driven by two actuators (see figure 1). In comparison to the classical system, this design offers an additional degree of freedom which is the vertical motion of the beam. We show that the new design offers the possibility to get rid of the closed loop low reactivity restriction. We propose two nonlinear controllers to steer the trajectories of the system towards a final desired position. The first controller adapts, to the new design, existing controllers from the literature for the classical ball & beam. The second controller uses the additional degree of freedom to provide a faster stabilization.*

### 1 Introduction

Stabilization of underactuated systems, driven by fewer actuators than degrees of freedom, presents a challenging problem which has attracted a considerable attention in the nonlinear control community (see, for example, [1] [2] [3] [4] and the references therein). The ball & beam system is one of the simplest underactuated systems.

The classical system consists of a beam free to rotate around a fixed axis. The ball is free to translate along the beam. It is un-

deractuated since the position of both the ball and beam should be controlled through the torque acting on the beam. An obstacle to the stabilization of the system came from the destabilizing centrifugal force (for more details see [5] [6] [7] [8]). In fact, from the dynamical equations

$$\begin{aligned}\ddot{y} &= y\dot{\theta}^2 - g \sin(\theta) \\ \ddot{\theta} &= \tau_2,\end{aligned}$$

one may naturally consider the gravitational term  $-g \sin(\theta)$  as a virtual control input for the  $y$  dynamics.  $\tau_2$  is then designed to accomplish the desired virtual input  $\theta$  which stabilize  $y$ . This approach works locally since if  $y$  is large or  $\dot{\theta}$  is high, the system is destabilized by  $y\dot{\theta}^2$ . The problem arise thus from the centrifugal force  $y\dot{\theta}^2$ , when both fast stabilization and large domain of attraction are desired. The global stabilization has been addressed through low gain control designs in [5] [6] [7] [8]. The idea is to drive the beam slowly such that  $\dot{\theta}$  become very small. A major drawback of low gain design is the slow time response of the closed loop system which induces large transients when the system starts far away from the origin. The present work consider a novel design of the ball & beam system which permits to overcome both mentioned problems. It is described in the following lines.

The beam consist in a double axis system whose inclination is driven through two actuators of different technology, pneumatic and electrical. The upper axis is held up from one side

---

\*Address all correspondence to this author.

by a Prismatic-Revolute (*PR*) piston rod and by a Revolute (*R*) piston rod on the other side. The “ball” (actually it is a translating mass) hang on lower axis and can slide along this one. A diagram of the platform is depicted in figure 2. It is worth mentioning that the new design is also an underactuated system since it has 3 outputs and 2 control inputs. Challenges arising from tight cooperation between both actuators will be addressed and faced using nonlinear control techniques, afterwards validated by means of this prototype in one of ongoing works.

This communication proceeds as follows. Section 2 introduces the dynamical model of the system. In section 3 and 4 two nonlinear controllers are developed. The first adapts existing results from literature to the new design. While the second controller take profit of the additional degree of freedom to provide faster time responses in closed loop. Simulation results are presented in section 5 with the aim of comparing the responses of both controllers. Finally, in section 6, conclusions are drawn.

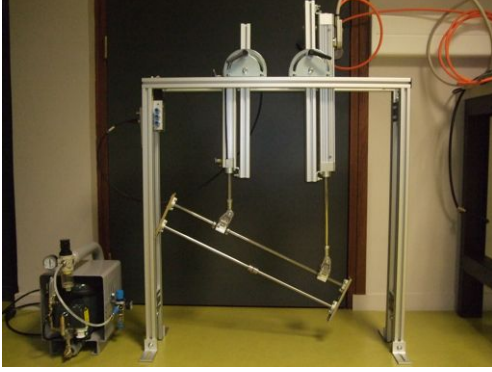


FIGURE 1. Benchmark picture

## 2 DYNAMICAL MODEL

Actuators dynamics is not our concern in this work, we assume that a feedback is already designed such that the forces acting on the beam can be considered as control inputs. Nonetheless, actuators dynamics will be one of our main concern in a future work in order to compare both technologies pneumatic and electrical. After writing the total energy of the system and applying the equations of Euler-Lagrange we have:

$$\Gamma(q)\ddot{q} + C(q, \dot{q})\dot{q} + G(q) = \tau, \quad (1)$$

where  $q = [x, \theta, y]^T$  is the vector of generalized coordinates.  $\Gamma(q) = [\gamma_1(q), \gamma_2(q), \gamma_3(q)]^T$ ,  $C(q, \dot{q})$ ,  $G(q)$  represent the in-

ertia matrix, the matrices of Coriolis and gravitational forces respectively. Due to lack of space we denote  $\sin \theta$  by  $s_\theta$ ,  $\tan \theta$  by  $t_\theta$  and  $\cos \theta$  by  $c_\theta$ . This notation applies only to the elements of equation (1) which are listed below:

$$\gamma_1(q) = \begin{bmatrix} M+m \\ (Ml+my)c_\theta \\ ms_\theta \end{bmatrix}, \quad \gamma_3(q) = \begin{bmatrix} ms_\theta \\ -my\phi \\ m(s_\theta^2 + c_{\theta+\alpha_1}^2) \end{bmatrix},$$

$$\gamma_2(q) = \begin{bmatrix} (Ml+my)c_\theta \\ J_0 + (Ml^2 + my^2)(c_\theta^2 + s_{\theta+\alpha_1}^2) \\ -my\phi \end{bmatrix},$$

$$G(q) = \begin{bmatrix} -(Mg+mg)c_{\alpha_1} \\ -(Ml-my)gc_\theta \\ mgs_\theta \end{bmatrix}, \quad \tau = \begin{bmatrix} F_1 + F_2c_{2\alpha_1} \\ \frac{F_2s_{\theta+\beta_2}(d-2d_1(t))c_{\beta_1}}{c_\theta + s_\theta t_{\alpha_2}} \\ 0 \end{bmatrix},$$

$$C(q, \dot{q}) = \begin{bmatrix} 0 & -(Ml+my)s_\theta\dot{\theta} + 2m\dot{y}c_\theta & 0 \\ 0 & \phi(Ml^2 + my^2)\dot{\theta} + 2my\dot{y}(c_\theta^2 + s_{\theta+\alpha_1}^2) & 0 \\ 0 & -2m\dot{y}\phi - my(c_{\theta+\alpha_1}^2 + s_\theta^2)\dot{\theta} & 0 \end{bmatrix},$$

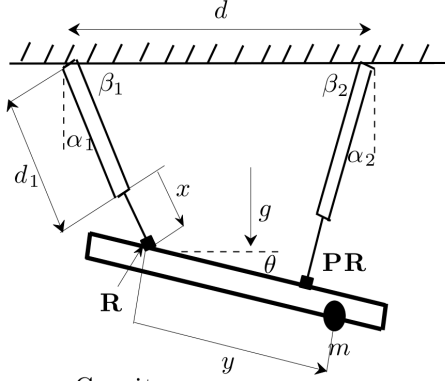
with  $\phi = (s_{\theta+\alpha_1}c_{\theta+\alpha_1} - c_\theta s_\theta)$ .  $M$  and  $m$  represent the masses of the beam and the “ball” respectively,  $J$  the inertia of the beam. The systems variables are represented on the figure 2.

For the sake of simplicity, in this preliminary study we assume that both actuators are mounted in a vertical position ( $\alpha_1 = \alpha_2 = 0$ ) reducing the dynamical model to (see fig. 3):

$$\begin{aligned} (M+m)\ddot{x} + (Ml+my)\cos\theta\ddot{\theta} + m\sin\theta\ddot{y} - (Ml+my)\sin\theta\dot{\theta}^2 \\ + 2m\dot{y}\cos\theta\dot{\theta} - (M+m)g = F_1 + F_2 \\ (J_0 + Ml^2 + my^2)\ddot{\theta} + (Ml+my)\cos\theta\ddot{x} + 2my\dot{y}\dot{\theta} \\ - (Ml+my)g\cos\theta = F_2d \\ \ddot{y} + \sin\theta\ddot{x} - y\dot{\theta}^2 + g\sin\theta = 0. \end{aligned} \quad (2)$$

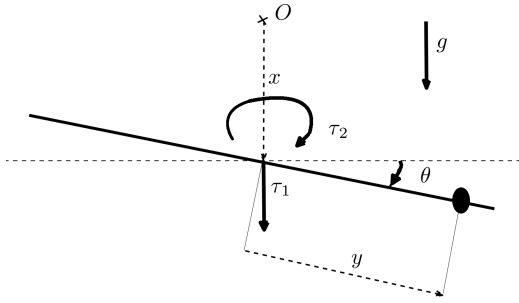
where  $F_1$  and  $F_2$  represent actuators forces acting, respectively, on points  $R$  and  $PR$  of Figure 2 and  $l$  the distance between point  $R$  and the center of gravity of the rod.

We apply first a classical partial feedback linearization while taking into account that  $(M+m(\cos\theta)^2)(J_0 + Ml^2 + my^2) - (Ml+my)^2$  is strictly positive. This condition can be satisfied by a proper choice of the physical parameters transforming (2) into



$g$  : Gravity  
**PR** : Prismatic & revolute joint  
**R** : Revolute joint  
 $\theta$  : Rod inclination with respect to horizontal plane

**FIGURE 2.** System diagram



**FIGURE 3.** System diagram for  $\alpha_1 = \alpha_2 = 0$ .  $\tau_1$  is a vertical force.  $\tau_2$  is the torque acting on the beam.

$$\begin{aligned}
 \ddot{y} &= y\dot{\theta}^2 - (g + \tau_1) \sin \theta \\
 \ddot{x} &= \tau_1 \\
 \ddot{\theta} &= \tau_2.
 \end{aligned} \tag{3}$$

### 3 First nonlinear controller

The domain of interest is constituted by  $\mathcal{D} = \mathbb{R} \times \mathbb{R} \times \mathbb{R} \times \mathbb{R} \times ]-\frac{\pi}{2}, \frac{\pi}{2}[ \times \mathbb{R}$ . We focus here on developing a first nonlinear controller which adapts [5] [6] [7] [8] to the new design in order to globally asymptotically stabilize the system (3).

The controller proceeds in steps. First a homogeneous state feedback from [11] is designed for torque  $\tau_1$ . It drives the  $x$  dynamics to zero in finite time. Then, a saturated control design [9] drives the  $y, \theta$  subsystem to the origin asymptotically.

Consider a double integrator

$$\ddot{x} = \tau_1. \tag{4}$$

According to [11], two positive constants  $K_1$  and  $K_2$  exist such that the control:

$$\tau_1 = -K_1 \text{sign}(x)|x|^{n_1} - K_2 \text{sign}(\dot{x})|\dot{x}|^{n_2}, \tag{5}$$

where  $n_2 \in [1 - \varepsilon, 1]$ , stabilizes (4) in finite time.  $\varepsilon$  is a small positive constant and  $n_1 = \frac{n_2}{2-n_2}$ . Thus after a finite time denoted  $T_0$ , we have  $x = \dot{x} = 0$ .

Consider the change of variables  $z_1 = \frac{y}{g}$ ,  $z_2 = \frac{\dot{y}}{g}$ ,  $z_3 = \theta$ ,  $z_4 = \dot{\theta}$ ,  $z_5 = x$  and  $z_6 = \dot{x}$  we have

$$\begin{aligned}
 \dot{z}_1 &= z_2 \\
 \dot{z}_2 &= -\frac{g + \tau_1}{g} \sin(z_3) + z_1 z_4^2 \\
 \dot{z}_3 &= z_4 \\
 \dot{z}_4 &= \tau_2 \\
 \dot{z}_5 &= z_6 \\
 \dot{z}_6 &= \tau_1.
 \end{aligned} \tag{6}$$

Using the control (5) and taking  $\tau_2 = -z_3 - z_4 + u$ , we have after the finite time  $T_0$ :

$$\begin{aligned}
 \dot{z}_1 &= z_2 \\
 \dot{z}_2 &= -\sin(z_3) + z_1 z_4^2 \\
 \dot{z}_3 &= z_4 \\
 \dot{z}_4 &= -z_3 - z_4 + u.
 \end{aligned} \tag{7}$$

Consider now the change of variables (where the physical homogeneity is ensured by appropriate choice of the coefficients in (8)):

$$\begin{aligned}
 y_1 &= -z_1 - 2z_2 + 2z_3 + z_4 \\
 y_2 &= -z_2 + z_3 + z_4 \\
 y_3 &= z_3 \\
 y_4 &= z_4.
 \end{aligned} \tag{8}$$

It transforms (7) to

$$\begin{aligned}
 \dot{y}_1 &= y_2 - 2P + u \\
 \dot{y}_2 &= -P + u \\
 \dot{y}_3 &= y_4 \\
 \dot{y}_4 &= -y_3 - y_4 + u,
 \end{aligned} \tag{9}$$

with  $P = y_3 - \sin(y_3) + z_1 y_4^2$ . Take the control

$$u = -\sigma_2(y_2 + \sigma_1(y_1)), \quad (10)$$

where  $\sigma_1$  and  $\sigma_2$  are two state dependent saturation functions defined as follows:

$$\begin{aligned} \sigma_i(s_i) &= s_i \text{ when } |s_i| < \varepsilon_i, \\ \sigma_i(s_i) &= \varepsilon_i \text{ when } s_i \geq \varepsilon_i, \\ \sigma_i(s_i) &= -\varepsilon_i \text{ when } s_i \leq -\varepsilon_i, \quad i = 1, 2. \end{aligned}$$

Take  $\varepsilon_2 = \min(\bar{\varepsilon}_2, \frac{1}{\sqrt{1+Cz_1^2}})$  where  $C > 1$  and  $\bar{\varepsilon}_2$  is chosen sufficiently small such that  $|\sin(\varepsilon_2) - \varepsilon_2| < \varepsilon_2^2$ ,  $\varepsilon_1 < \frac{\varepsilon_2}{2}$  and  $\varepsilon_2^2 < \frac{\varepsilon_1}{2G_2}$ .  $G_2$  is a positive constant. By the monotonicity of the sine function and its derivative on the interval  $[0, \frac{\pi}{2}]$ , it is clear that  $|\sin y_3 - y_3| < \frac{y_3^2}{G_1} \forall |y_3| < \varepsilon_2$ ,  $G_1 > 1$  is a properly chosen constant. By taking a quadratic Lyapunov function in both  $y_3$  and  $y_4$ , it is straightforward to show that in a finite amount of time, say  $T_1$ , we have  $|y_3| \leq \frac{|u|}{\rho}$ ,  $|y_4| \leq \frac{|u|}{\rho'}$  where both  $\rho$  and  $\rho'$  belong to  $[1 - \delta, 1[$  and  $\delta$  is a small positive constant. Consider now the  $y_2$  dynamics, the time derivative of the Lyapunov function  $V_2 = \frac{1}{2}y_2^2$  is bounded by

$$\begin{aligned} \dot{V}_2 &= y_2(P + u) \leq y_2\left(\frac{|u|^2}{G_1} + z_1 \varepsilon_2 |u| - u\right) \\ &\leq y_2\left(\frac{|u|}{G_1} + |z_1| \varepsilon_2 - 1\right) \sigma_2(y_2 + \sigma_1(y_1)), \end{aligned} \quad (11)$$

where  $G_1$  and  $\varepsilon_2$  are chosen such that  $\frac{|u|}{G_1} + |z_1| \varepsilon_2 - 1 < 0$  as a consequence, there exist a finite time, denoted by  $T_2$ , such that  $y_2 \leq \frac{\varepsilon_2}{2}$ . Consider now the Lyapunov function  $V_1 = \frac{1}{2}y_1^2$  associated to the  $y_1$  dynamics which is given by:

$$\dot{y}_1 = y_2 + 2(y_3 - \sin y_3) + 2z_1 y_4^2 + u, \quad (12)$$

notice that  $u = -y_2 - \sigma_1(y_1)$  from now on. The time derivative of  $V_1$  writes:

$$\dot{V}_1 \leq y_1\left(2\frac{|u|^2}{G_1} + 2z_1|u|^2 - \sigma_1(y_1)\right), \quad (13)$$

which ensures by a proper choice of the saturation functions as well as the constants  $C$  and  $G_2$  that after a finite amount of time the input  $u$  is no more saturated  $u = -y_2 - y_1$ . The closed loop system is reduced to:

$$\begin{aligned} \dot{y}_1 &= -y_1 + 2P \\ \dot{y}_2 &= -y_1 - y_2 + P \\ \dot{y}_3 &= y_4 \\ \dot{y}_4 &= -y_3 - y_4 - y_2 - y_1 \end{aligned} \quad (14)$$

which is locally asymptotically stable.

#### 4 Second nonlinear controller

Suppose that there exist a feedback control which drives the system so that the instantaneous axis of rotation of the beam be the position where the ‘‘ball’’ is located. This consideration, if realized, permits to completely suppress the (destabilizing) influence of the centrifugal force. Motivated by this observation, let us consider the following change of variables which is valid on  $\mathcal{D}$ :

$$\begin{bmatrix} x_m \\ y_m \end{bmatrix} = \begin{bmatrix} 1 & \sin \theta \\ 0 & \cos \theta \end{bmatrix} \begin{bmatrix} x \\ y \end{bmatrix}. \quad (15)$$

It is invertible with  $y = \frac{y_m}{\cos \theta}$  and  $x = x_m - y_m \tan \theta$ . With the new variables the system writes:

$$\begin{aligned} \ddot{x}_m &= -g(\sin \theta)^2 + 2(\dot{y}_m + y_m \tan \theta \dot{\theta})\dot{\theta} + (\cos \theta)^2 \tau_1 + y_m \tau_2 \\ \ddot{y}_m &= -g \sin \theta \cos \theta - 2(\dot{y}_m + y_m \tan \theta \dot{\theta}) \tan \theta \dot{\theta} - \sin \theta \cos \theta \tau_1 \\ &\quad - y_m \tan \theta \tau_2 \\ \ddot{\theta} &= \tau_2. \end{aligned} \quad (16)$$

Consider the regular change of control variables applicable for  $\theta \in ]-\frac{\pi}{2}, \frac{\pi}{2}[$ :

$$\begin{bmatrix} u \\ v \end{bmatrix} = \begin{bmatrix} (\cos \theta)^2 & y_m \\ 0 & 1 \end{bmatrix} \begin{bmatrix} \tau_1 \\ \tau_2 \end{bmatrix},$$

with  $u$  given by

$$u = g(\sin \theta)^2 - 2(\dot{y}_m + y_m \tan \theta \dot{\theta})\dot{\theta} - \psi(x_m, \dot{x}_m) \quad (17)$$

and  $\psi(x_m, \dot{x}_m)$  is a stabilizing controller for the  $x_m$  dynamics. Equation (17) transforms (16) to

$$\begin{aligned} \ddot{x}_m &= -\psi(x_m, \dot{x}_m) \\ \ddot{y}_m &= -\tan \theta (g + \ddot{x}_m) \\ \ddot{\theta} &= v. \end{aligned}$$

We use a saturated control for  $\psi(x_m, \dot{x}_m)$  in order to ensure that  $g - |\ddot{x}_m| > 0$ . Take  $z = \tan \theta$  and  $v = \frac{1}{(1+z^2)^2} (w - 2z\dot{z}^2)$ , the system writes:

$$\begin{aligned} \ddot{x}_m &= -\psi(x_m, \dot{x}_m) \\ \ddot{y}_m &= -(g + \ddot{x}_m)z \\ \ddot{z} &= w. \end{aligned}$$

where  $w$  is a new control input.

Consider the new variable:  $\xi = z - \alpha y_m - \beta \dot{y}_m$ . Its second order derivative is given by:

$$\ddot{\xi} = w + (g + \ddot{x}_m)(\alpha z + \beta \dot{z}) + \beta x_m^{(3)} z.$$

The dynamics  $(\xi, \dot{\xi})$  can be stabilized by

$$w = -(g + \ddot{x}_m)(\alpha z + \beta \dot{z}) - \beta x_m^{(3)} z - \Phi(\xi, \dot{\xi})$$

where  $\Phi$  can be taken as in (5) with the purpose of ensuring a finite time stabilization. After a finite time denoted by  $T_4$ , we have  $\xi = \dot{\xi} = 0$  and subsystem  $y_m$  reduced to

$$\ddot{y}_m = -(g + \ddot{x}_m)(\alpha y_m + \beta \dot{y}_m)$$

which is asymptotically stable due to the choice of  $\psi$  which ensure that  $g - |\ddot{x}_m| > 0$ .

## 5 Simulation

The performance of both controllers is compared through numerical simulations depicted in figures 4-9. Two tests were performed.

1. For the first one, the system starts at the initial conditions  $y = 1$ ,  $\theta = 0.35rd \approx 20^\circ$  and  $x = \dot{x} = \dot{y} = \dot{\theta} = 0$ . Simulations results are shown on figure 4 for the first controller, while on figures 6 and 7 for the second one.
2. For the second test, the system starts at the initial conditions  $y = 1$ ,  $\theta = 1.4rd \approx 80^\circ$  and  $x = \dot{x} = \dot{y} = \dot{\theta} = 0$ . Simulations corresponding to the first controller are reported on the figure 5. On the other hand, simulations for the second controller are shown on figures 8 and 9.

By examining the simulations, it can be noticed that the second controller avoids the large transients induced by the saturated control of the first one. Thus, the effectiveness of the new design is confirmed. On the other hand, it is worth mentioning that the first controller provide a saturated input which can be beneficial in some situation. Pay attention that the time axis in Figures 4 and 5 are larger than the time axis of Figures 6-9.

## 6 Conclusion

This communication presented a new design for the ball and beam system. The idea behind this novel design is to get rid of the centrifugal force which constitute an obstacle for fast and global stabilization of the classical ball & beam system. Two nonlinear controllers have been developed. The first one adapts

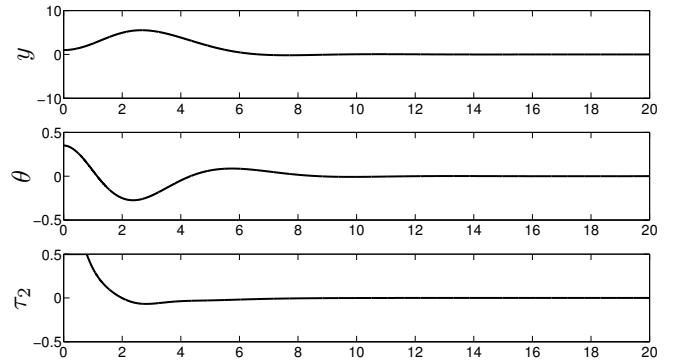


FIGURE 4. First controller, test 1.

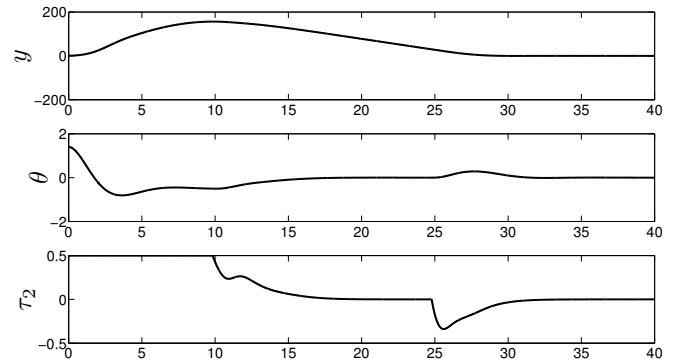


FIGURE 5. First controller, test 2.

existing controllers from the literature to the new system. The drawback of this controller is slow reactivity of the closed loop. The second controller takes profit of the additional degree of freedom of the system to provide fast global stabilization. The efficiency of the algorithm was attested by several numerical simulations. Experimental results are one of our ongoing works.

## ACKNOWLEDGMENT

This work was supported by BQR, SYMER and Agregation projects. The authors would like to thank Emmanuel SOHM and Pascal MARDESSON from SDI company for fruitful discussions.

## REFERENCES

- [1] Fantoni, I., and Lozano, R., 2001. "Non-linear control for underactuated mechanical systems". *Springer*.
- [2] Ortega, R., Gomez-Estern, F., and Blankenstein, G., 2002. "Stabilization of a class of underactuated mechanical sys-

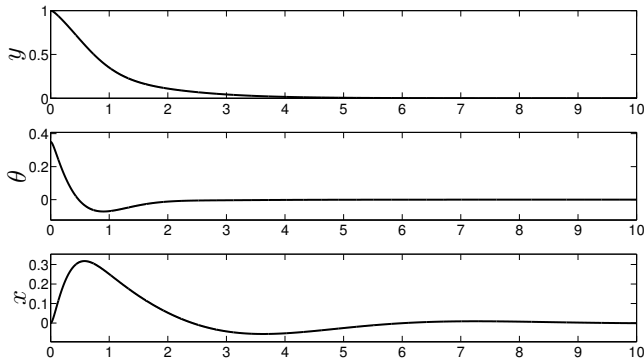


FIGURE 6. Second controller, test 1, system outputs.

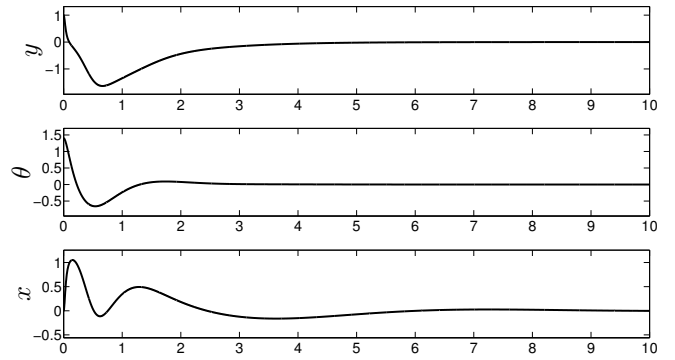


FIGURE 8. Second controller, test 2, system outputs.

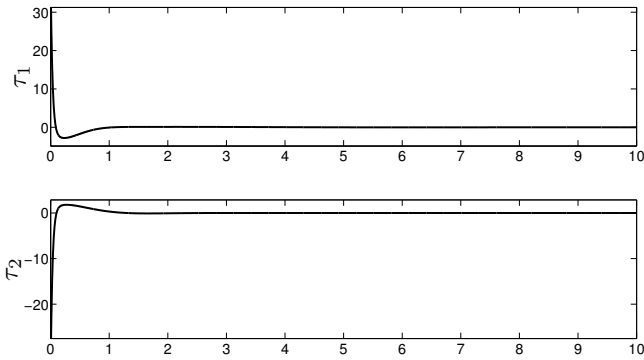


FIGURE 7. Second controller, test 1, control inputs.

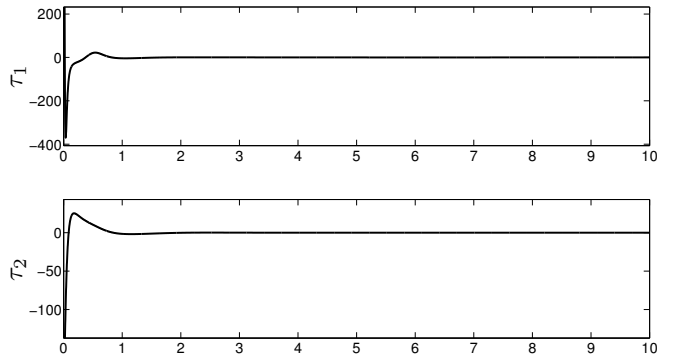


FIGURE 9. Second controller, test 2, control inputs.

- tems via interconnection and damping assignment”. *IEEE Trans. Auto. Control*, **47**, pp. 1218–1233.
- [3] Spong, M., 1995. “The swing up control problem for the acrobat”. *IEEE Control Systems Magazine*, pp. 49–55.
- [4] Wei, Q., Dayawansa, W., and Levine, W., 1995. “Nonlinear control for an inverted pendulum having restricted travel”. *Automatica*, **31**, pp. 841–850.
- [5] Sepulchre, R., 2000. “Slow peaking and low-gain designs for global stabilization of nonlinear systems”. *IEEE TAC*, **45**(3), pp. 453–461.
- [6] Barbu, C., Sepulchre, R., Lin, W., and Kokotovic, P. V., 1997. “Global asymptotic stabilization of the ball & beam system”. *IEEE CDC*, Dec.
- [7] Teel, A., 1993. “Semi-global stabilization of the ball & beam using output feedback”. *ACC*, June.
- [8] Ye, H., Gui, W., and Yang, C., 2011. “Novel stabilization designs for the ball-and-beam system”. *IFAC world congress*.
- [9] Teel, A., 1992. “Global stabilization and restricted tracking for multiple integrators with bounded controls”. *Systems &*

- control letters*, **18**, pp. 165–171.
- [10] Sussman, H., and Kokotovic, P., 1991. “The peaking phenomenon and the global stabilization of nonlinear systems”. *IEEE Transactions on Automatic Control*, **36**, pp. 424–440.
- [11] Bhat, S. P., and Bernstein, D. S., 2000. “Finite-time stability of continuous autonomous systems”. *SIAM Journal of Control and Optimization*, **38**, pp. 751–766.