

# I know who you will meet this evening! Linking wireless devices using Wi-Fi probe requests

Mathieu Cunche, Mohamed Ali Kaafar, Roksana Boreli

► **To cite this version:**

Mathieu Cunche, Mohamed Ali Kaafar, Roksana Boreli. I know who you will meet this evening! Linking wireless devices using Wi-Fi probe requests. WoWMoM - 13th IEEE International Symposium on a World of Wireless, Mobile and Multimedia Networks - 2012, Jun 2012, San Francisco, United States. hal-00747825

**HAL Id: hal-00747825**

**<https://hal.inria.fr/hal-00747825>**

Submitted on 2 Nov 2012

**HAL** is a multi-disciplinary open access archive for the deposit and dissemination of scientific research documents, whether they are published or not. The documents may come from teaching and research institutions in France or abroad, or from public or private research centers.

L'archive ouverte pluridisciplinaire **HAL**, est destinée au dépôt et à la diffusion de documents scientifiques de niveau recherche, publiés ou non, émanant des établissements d'enseignement et de recherche français ou étrangers, des laboratoires publics ou privés.

# I know who you will meet this evening!

## Linking wireless devices using Wi-Fi probe requests

Mathieu Cunche\*, Mohamed Ali Kaafar†, Roksana Boreli\*

\*National ICT Australia †INRIA Rhône-Alpes Grenoble France

**Abstract**—Active service discovery in Wi-Fi involves wireless stations broadcasting their Wi-Fi fingerprint, i.e. the SSIDs of their preferred wireless networks. The content of those Wi-Fi fingerprints can reveal different types of information about the owner. We focus on the relation between the fingerprints and the links between the owners. Our hypothesis is that social links between devices owners can be identified by exploiting the information contained in the fingerprint. More specifically we propose to consider the similarity between fingerprints as a metric, with the underlying idea: similar fingerprints are likely to be linked. We first study the performances of several similarity metrics on a controlled dataset and then apply the designed classifier to a dataset collected in the wild. Finally we discuss how Wi-Fi fingerprint can reveal informations on the nature of the links between users. This study is based on a dataset collected in Sydney, Australia, composed of fingerprints corresponding to more than 8000 devices.

### I. INTRODUCTION

The huge popularity of mobile and portable wireless devices, including smart phones, tablets and laptops, has further increased the widespread of one of the most used wireless technologies, IEEE 802.11 or Wi-Fi. Included in over a billion of mobile and portable devices in use worldwide, Wi-Fi is provided by Access Points (AP) from a vast majority of homes in the developed and developing world, businesses and by around 750,000 worldwide hotspots. The extensive availability of Wi-Fi connectivity, together with a growing popularity of community networks, has resulted in mobile and portable devices establishing connections to an increasingly large number of APs in various locations.

The open nature of Wi-Fi connectivity has raised a number of privacy concerns in both the media and research literature [10], [13], [6], including the well publicized Google Street View collection of traffic from home Wi-Fi APs.

Mobile and portable devices are likely to move across the coverage areas of different APs, e.g. while a person is traveling between home and work. In this likely scenario, low-latency service discovery is a highly desirable feature, as it will maximize the amount of connection time for such devices. We note that the Wi-Fi passive discovery mode, in which the AP periodically sends beacons announcing the AP's Service Set Identifier (SSID), and where devices listening to these probes select the desired specific SSID, can lead to high discovery delays. In the active discovery mode, the device periodically and actively probes the neighborhood for known APs. This mode, which is supported by operating systems and Wi-Fi chipset drivers on the majority of devices and often activated by default, allows a much lower discovery delay. However, the

active discovery mode also raises privacy concerns. Indeed, while in active discovery mode, the mobile or portable device is periodically broadcasting, in the clear, the SSIDs of the APs to which this device has previously been connected to. The device also broadcasts its MAC address, a globally unique identifier. As a consequence, the device is not only advertising its presence to any eavesdropping equipment, but, as an associated issue, this also makes the owner vulnerable to location tracking and possibly profiling attacks.

In this paper, we introduce and study a new privacy threat caused by the Wi-Fi active discovery mode, that is the possibility to infer a relation between devices (and hence the owners of these devices) based on their device's "publicly" announced preferred networks. We refer to the list of preferred networks stored on a device, either partially or globally collected by monitoring wireless probes, as a *device Wi-Fi fingerprint*.

Various sources of Wi-Fi related potential privacy loss have been addressed in the research literature. The timing pattern of the probe messages can be used to identify the wireless interface's driver[5], or to create a unique device identifier[3]. Our work considers the list of preferred networks as the fingerprint, rather than the timing of probes. We use this fingerprint to link selected devices with similar fingerprints, with the aim of grouping devices and, by association, the owners of these devices.

The SSID of the probed network can also reveal sensitive information about the user, as shown in [6], [9], [8]. In particular, SSIDs can reveal geographical location of users [12] when combined with specific databases containing APs' location coordinates, like [1]. Our work is complimentary to the research showing how user location can be derived from AP locations, as e.g. users who are detected by our methodology as linked socially or professionally, may also reside in a similar location. This enables additional location detection of users who have APs which may not be in publicly available data bases, or which do not have globally unique SSIDs. In regard of the various problems caused by the current probing process, a privacy preserving access-point discovery has been proposed by Lindqvist et. al [8].

In general, discovering links between any two devices is a challenging task. In [11] the geographical proximity sensing capabilities of bluetooth technology have been used to suggest potential friendship links to a user. This approach relies on an always-on application running on the user's phone, which constantly monitors surrounding bluetooth-enabled devices. In [4] friendship links are predicted using a large set of

information collected from mobile phones. In both research works, discovering a relationship is seen from the perspective of one of the partners', and assumes the collection of a sustainable amount of complete information both in terms of temporal data and number of attributes. In our case, the amount of information is quite limited and often partial (Wi-Fi fingerprints consist of small pieces of information, and the information is sparse). On the other hand, the datasets we consider are composed of a much larger set of samples, and thus contain much more possibilities, which in turn makes the task of linking the devices more challenging.

We propose to exploit the device's Wi-Fi fingerprint to group devices and the owners of those devices. The techniques presented hereafter are widely applicable to all devices that publicly expose the SSIDs to which they have been previously associated. Our purpose is to show that the evaluation of fingerprint similarity enables simple, yet efficient tracking and profiling of mobile devices users. In light of these findings, it is desirable that the research community investigates the capabilities and limits of these techniques. This will, in turn, allow for the design of appropriate countermeasures to protect users' privacy.

The contributions of this paper are manifold. First, we introduce the problem of linking devices relying on monitored wireless probes. This problem is, to the best of our knowledge, novel and has not been explored in the literature. Second, we consider and adapt several record linkage techniques as fingerprint similarity metrics, to build a classifier that, given two fingerprints, can determine with high accuracy whether the two devices belong to individuals with an established relationship. This tool, when used with suitable record linkage techniques, validates an intuitive observation: the two separate devices belonging to two socially linked individuals most likely share common SSIDs. However, only the existence of a large and/or rare overlap in SSIDs between the two fingerprints results in establishing the links between individuals with an established social relationship. These results are tested and validated on real world data. By passively monitoring broadcast Wi-Fi probes in the city of Sydney, Australia for a period of 100 days, we have collected fingerprints of more than 8K unique devices and more than 24K different SSIDs. Additionally, we have collected a control dataset comprising of device fingerprints representing 30 social relationships, which we use to validate the classifier. We then apply selected metrics to the public dataset and analyse the characteristics of the detected links.

We envision several possible uses of these techniques, not all of them malicious. In particular, in cases of criminal investigations, where the Wi-Fi device fingerprint of a known suspect is collected. Forensics analysts can for instance, collect the fingerprints of users in the suspect's neighborhood, and our classifier could allow them to distinguish if a set of individuals are likely to have a social relationship with the suspect. As a second use case, wireless service providers could gather valuable information across a specific geographical area to send extremely targeted advertisements to users they deem to

be socially linked to their (known) customers. For example, when a group of people have been identified as linked through a friendship relation, the knowledge of a single individual's age can allow the service provider to infer the whole group's age category. This would enable very targeted and efficient ad campaigns.

The paper is organized as follows. In Section II, we overview the related work, and present the background related to the IEEE 802.11 standard probe requests, along with the details of our data collection and observations on the collected dataset. The feasibility of discovering links between devices based on their fingerprint is analyzed in Section III. In Section IV the proposed detection mechanism is applied to a wild dataset. A discussion is presented in section V. Finally we conclude in Section VI.

## II. WI-FI SERVICE DISCOVERY AND DEVICE FINGERPRINT COLLECTION

In this section, we introduce the Wi-Fi service discovery and present the underlying mechanisms of the IEEE 802.11 protocol. We then describe the methodology we have used to collect the set of Wi-Fi fingerprints belonging to various Wi-Fi enabled devices and finally we present some observations on the collected dataset.

### A. Wi-Fi service discovery

The service discovery feature is a key element of the IEEE 802.11 standard family, which allows a Wi-Fi station to detect other stations and access points in range. The 802.11 standard implements two modes of service discovery.

*a) Passive service discovery:* In passive mode, access points are advertising services to stations in range using beacons, which are broadcasted periodically on the access point's operating channel. Stations passively listen for these beacons, while switching through the set of possible channels. Depending on the frequency on which the beacons are transmitted, and the channel switching speed and strategy, the resulting lengthy discovery of an AP [7] may not be suitable for mobile devices.

*b) Active service discovery:* In the active service discovery mode, the wireless station actively searches for known APs by probing each channel. The probing consists in broadcasting *probe request* messages for known APs and then listening for *probe response* messages. The *probe request* messages are management frames defined by the 802.11 standard, which embed the SSID of the target AP. The probing is repeated on each channel until the station successfully associates to an AP.

Compared to the passive mode, actively probing the network for known APs has the advantage of reducing potentially long service discovery delays. Indeed, following a complete cycle through the channels, the wireless station is guaranteed to discover all the known APs in range. In addition, the active service discovery mode is required in the case of wireless networks with a *hidden SSID*, when the AP is not broadcasting beacons with its associated SSID embedded into the management frames.

## B. Wi-Fi Fingerprint of a device

We note that the active service discovery process is enabled on a large number of operating systems (e.g. iOS, Google Android, Windows). As a consequence, when the devices running those OSs are out of range of a known AP, they continuously broadcast probe request messages. The latter contain the MAC address of the device, and as such uniquely identify the device. While listening in to traffic containing these management frames (broadcasted in plain text), an eavesdropper can easily collect the set of announced SSIDs i.e. the *Wi-Fi fingerprint* and associate them with a specific device. In the following sub-sections, we present our experimentation approach and characteristics of the collected Wi-Fi fingerprints.

## C. Fingerprint collection

For our dataset collection, we have used a netbook with a Wi-Fi interface set to monitoring mode<sup>1</sup> and a packet analysis tool to filter out the *probe* messages<sup>2</sup>. For each probe request, we record a time stamp, the source MAC address, the destination MAC address, and the content of the SSID field. As mentioned previously, in active probing mode, the probe requests are broadcasted. Notably, since the MAC address of the AP associated to the target SSID is not available, we cannot uniquely identify the AP to which the device has been previously associated. Indeed, the same SSID can simply be used by several APs, and the number of APs associated to an SSID ranges from one, e.g. a personal AP with a “unique” name such as the concatenation of the first bytes of the AP MAC address and the Internet service provider name, to several thousands of APs, default equipment SSIDs such as *NETGEAR* or common hotspot names such as *BTOpenzone* or *McDonald’s FREE WiFi*.

Our study was conducted on two types of Wi-Fi fingerprint data sets. First, we collected fingerprints advertised by wireless devices in the city of Sydney (Australia) over a period of 6 months. The monitoring (fingerprint collection) was performed by one of the authors, during the daily commute and various social activities. The rate at which fingerprints have been collected depended on the density of the surrounding area, and can go up to several 10’s of devices per minute.

The collected dataset initially contained over 24.000 unique devices and 30.000 different advertised SSIDs. In this data set a large fraction (more than 60%) of the devices had a fingerprint reduced to one SSID. As it is unlikely that a large number of devices have been associated to only one AP, we believe that those fingerprints may have been partially collected<sup>3</sup>. Therefore we have decided to discard them and base our study only on the devices with fingerprints with at least two SSIDs. After this filtering, the dataset still contained

<sup>1</sup>We used the driver and software provided by the *aircrack* suite to monitor Wi-Fi frames.

<sup>2</sup>We used *tshark*, the command-line version of *wireshark*

<sup>3</sup>Fingerprint of size 1 can be explain by several reasons. It can come from an partial collection of the fingerprint, e.g. the device wasn’t in range long enough to collect all the SSIDs. It is also possible that those SSIDs correspond to AP with hidden SSID.

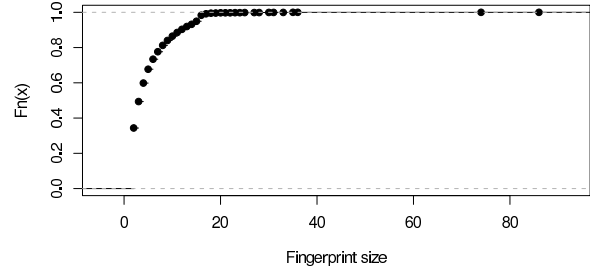


Fig. 1. Cumulative distribution function of the fingerprint size (number of SSID per device).

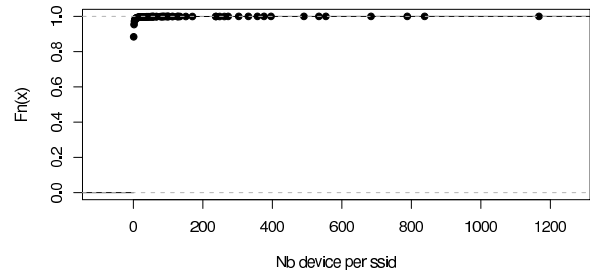


Fig. 2. Cumulative distribution function of the number of device per SSID.

8834 devices and 26262 SSIDs. This dataset is referred to as *PubProbes*.

A second dataset has been collected from a set of volunteers, with known device MAC addresses, also by our monitoring devices. This dataset is composed of 30 fingerprint pairs with a well established and known (disclosed) underlying social link. This dataset is referred to as *VolunteerProbes*.

During our fingerprint collection campaign, we have observed that the frequency at which the fingerprints are collected depends on the density of devices in the surrounding area. It can range from one to several dozens of devices per minute. In fact, probe requests are transmitted within small bursts. The frequency at which those bursts are emitted over a given channel depends on the device and more particularly on the operating system/driver [5]. The average interval between any two bursts from the same device varies from 50 to 60 seconds. Conservatively, being in range of any station for 60 seconds could be sufficient to collect the whole fingerprint of a device. However, it is important to note that due to potential loss of probes (e.g. when the quality of the channel is low), several bursts may be required to collect the complete set of SSIDs broadcasted by a device.

c) *Observations on the collected dataset:* Within the *PubProbes* dataset, the size of the fingerprints varies from one to 100 SSIDs, and has an average size of 5.34. Figure 1 shows the cumulative distribution of the number of SSIDs per fingerprint; it shows, that large majority of the fingerprints

have a size lower than 20, while some fingerprints contains more than 80 SSIDs. Figure 2 shows the cumulative distribution of number of fingerprint per SSID. We can observe that a large fraction of the SSIDs are unique to a single fingerprint while on the other hand, a few very popular SSIDs are shared among a large number of fingerprints. As a consequence of this SSID diversity, each fingerprint is unique, which makes it an excellent unique identifier. We note that those observation are similar to those drawn based on a similar dataset collected on a university campus by Rose et. al. [12].

### III. LINKABILITY OF THE DEVICES

As outlined in the introduction, our interest is in measuring the similarity between the Wi-Fi fingerprints of various devices, which can in turn allow us to link the devices and the owners of these devices. Many well-known Record Linkage (RL) (alternatively, Entity Resolution) techniques have been successfully used to find records that may belong to the same entity in two or more databases. In RL terminology, two records that have been matched are said to be linked (we will use the same term throughout this work). To the best of our knowledge, the application of record linkage techniques to link Wi-Fi fingerprints is novel and it presents several challenges on its own. Information retrieval techniques typically measure distances between two documents (or a search query and a document), which are a set of words and thus need to be adapted for our purpose. Therefore, before presenting the study of fingerprint similarity in the wild, we start by studying the characteristics of fingerprint pairs with a known underlying link. For this purpose, we use ground truth evidence (the VolunteerProbes dataset) in which social links between devices' holders are known.

#### A. The (VolunteerProbes) dataset characteristics

We have collected the Wi-Fi fingerprints from a set of volunteers, along with the fingerprints of individuals with whom they maintain a strong social relationship (family members, close friends, flat mates). Once the VolunteerProbes dataset has been collected, all the devices pairs have been considered and categorized into two groups: those for which we verified that their owners are linked (we refer to this set as  $L$  for linked), and others for which we verified that their owners are not linked, referred to as  $NL$  for non linked group of device pairs.

To assist with the analysis, we first define the frequency of an SSID  $z$  within a corpus,  $\mathcal{F}$ , that is the ratio between the fingerprints  $X$  containing the SSID  $z$ , over the total number of fingerprints in the corpus:  $\mathcal{F}$  as  $f_z = \frac{|X, z \in X|}{|\mathcal{F}|}$ . In our case, the corpus  $\mathcal{F}$  is the set of total fingerprints from the PubProbes and VolunteerProbes datasets. The PubProbes dataset serves as a reference, since we can be confident that the SSID frequency estimation, although coarse, gives a stable frequency measure of the common SSIDs. Indeed, in  $f_z$  we will measure the number of occurrences of SSIDs in the collected sample, and hence we are assigning maximum probability to the observed samples and zero to all the others.

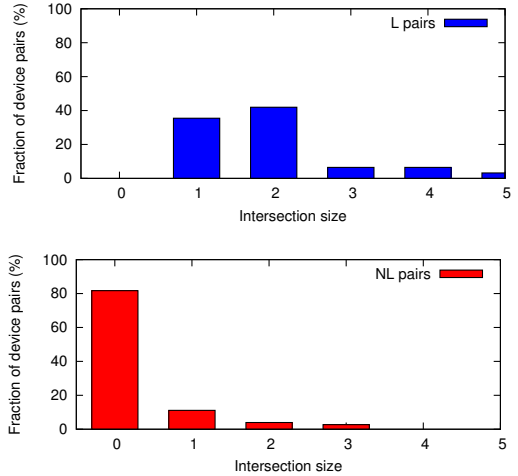


Fig. 3. Intersection size distribution for Wi-Fi fingerprints pairs collected from volunteers.

Since, as we will discuss next, we are interested in the rarity of SSIDs in intersections and it is highly likely that common SSIDs would be overrepresented in the PubProbes dataset, a simple frequency estimation as defined by  $f_z$  can be used for this purpose.

#### B. Characteristics of fingerprint pairs

Our approach determines the similarity between any two fingerprints primarily on the SSIDs they have in common, rather than on the semantic analysis of the Wi-Fi fingerprints. We focus on two aspects of the fingerprint intersections: the size and the rarity. The size of the intersection simply represents the number of SSIDs shared by the two fingerprints. The rarity of the intersection of any two fingerprints  $X$  and  $Y$ , denoted  $Rarity(X, Y)$  hereafter, measures its uniqueness and is equal to the product of the frequency estimation of the elements in the intersection. The higher the rarity score, the more unique the intersection is.

$$Rarity(X, Y) = \begin{cases} \sum_{z \in X \cap Y} -\log f_z & \text{if } X \cap Y \neq \emptyset \\ 0 & \text{otherwise} \end{cases} \quad (1)$$

where  $f_z$ , the frequency of the element  $z$ .

Figure 3 shows the distributions of the intersection for both sets  $L$  and  $NL$  of fingerprint pairs. In particular, we can clearly observe that the size of the intersection is at least equal to one for *all* pairs with an established social link, while it is empty for more than 90% of the pairs that are not linked. Put simply, Wi-Fi fingerprints of devices with owners who are socially linked are more likely to have a non-empty intersection. The size of the intersection seems to be the first discriminatory characteristic for the existence of a relation between devices holders. However, as illustrated by Figure 3, matching the intersection sizes, although the two distributions differ, does not always indicate that the two devices belong to socially

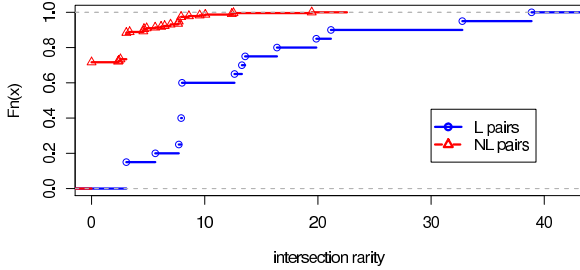


Fig. 4. Intersection rarity distribution for device pairs with and without social link.

linked individuals. The probability that two devices are linked should then depend on: (1) the size of the intersection between the two fingerprints; and (2) how likely is that intersection in the other samples.

Figure 4 shows the cumulative distribution of the rarity for the Intersection sets of pairs (again for both  $L$  and  $NL$ ). We observe that the linked pairs are characterized by the highest rarity scores whereas a large majority of the non linked pairs have a low score. In general, almost all the rarity scores of the “linked” fingerprints intersection (in  $L$ ) are higher than the non linked devices rarity scores. This validates an intuitive observation: having a non empty intersection between two device fingerprints is not sufficient to consider a social link between the devices holders, as it should be necessary to include the rarity of the shared SSIDs. The underlying idea is that a common SSID does not provide much information on a potential social link between specific users. As shown in Section II, some SSIDs might be shared by a large number of devices’ fingerprints, e.g. hotspots and redundant by-default SSIDs.

### C. Similarity metrics

To infer a social link between two devices holders, we need to compare the similarity between two sets of SSIDs. In this paper, we consider a well known set of similarity metrics, used in record linkage related problems. The argument for using the theory and techniques utilised for information retrieval i.e. computing of document similarity, is that we can view the SSIDs as a collection of words. We have tested a number of similarity metrics and in this paper we present those that produce the best results, based on considering either the size or the rarity of the SSID intersection sets.

1) *Jaccard Index*: The Jaccard index simply considers the similarity of two samples, as the ratio the ratio of the intersection’s cardinal by the union’s cardinal, i.e.  $J(X, Y) = \frac{|X \cap Y|}{|X \cup Y|}$ . The Jaccard Index ranges from 0 (disjoints sets) to 1 (identical sets). It only consider the intersection size and does not take into account the rarity of the elements in the intersection.

2) *IDF similarity*: In this case we use a well known information retrieval tool called TF-IDF. However, TF-IDF

similarity measures the distance between two documents (or a search query and a document), which are set of words. We need to slightly alter the TF-IDF measure to apply it to Wi-Fi fingerprints instead. The term frequency-inverse document frequency (TF-IDF) is a weight used to evaluate how important is a word to a document that belongs to a corpus. The weight assigned to a word increases proportionally to the logarithm of the number of times the word appears in the corpus but the importance decreases for common words in the corpus.

The TF-IDF of term  $i$  in document  $X$  is  $\text{TF-IDF}(X, i) = \text{TF}_{X,i} \cdot \text{IDF}_i$ , where  $\text{TF}_{X,i}$  is the term frequency of  $i$  in document  $X$  defined as  $\text{TF}_{X,i} = \frac{|\{t \in X: t=i\}|}{|X|}$  and  $\text{IDF}_i$  is the inverse document frequency of the term  $i$  in the considered corpus. In our case the inverse document frequency is simply the logarithm of the SSID’s frequency inverse:  $\text{IDF}_i = \log \frac{1}{f_i}$ .

The TF-IDF is often used to measure the similarity between two documents, in the following way: first the TF-IDF is computed over all the terms in the two documents, and the results are stored in two vectors; then the similarity between the two vectors is computed, for example using a cosine similarity measure. In our case, terms appear at most once in a fingerprint. Therefore, we replaced the term frequency component by a binary function: 1 if the fingerprint contains the term, 0 otherwise. The modified cosine similarity-based IDF is:

$$\text{Cosine-IDF}(X, Y) = \frac{\sum_{x \in X \cap Y} \text{IDF}_x^2}{\sqrt{\sum_{x \in X} \text{IDF}_x^2} \sqrt{\sum_{y \in Y} \text{IDF}_y^2}} \quad (2)$$

The *Cosine-idf* ranges from 0 (disjoints sets) to 1 (identical sets).

3) *Adamic similarity*: In [2], Adamic & Adar proposed a metric to estimate between personal pages similarities, and used this metric to infer social links. The *Adamic* metric takes into account the frequency of the pages elements by considering the logarithm of their frequency, as follows:

$$\text{Adamic}(X, Y) = \sum_{z \in X \cap Y} \frac{1}{\log f_z} \quad (3)$$

where  $f_z$  is the frequency of the element  $z$ . The Adamic metric ranges from 0 (disjoints sets) to a given maximum value depending on the considered corpus. Notably, this metric takes into account both the rarity and the size of the intersection.

4) *Modified Adamic similarity*: Since the Adamic metric considers the logarithm of the element’s frequency, it naturally tends to reduce the impact of the rarest elements. We argue that the rarest elements, i.e. those shared by only two fingerprints, are actually those containing the more information about a potential link. In order to strengthen the similarity metric, we propose to modify the Adamic metric by replacing the logarithm of the frequency by a power of the frequency. Using a power of the frequency instead of a logarithm-based value will strengthen the importance of the rarest SSIDs among the

sample. Our modified Adamic similarity, called Psim- $q$ , is as follows:

$$\text{Psim-}q(X, Y) = \sum_{z \in X \cap Y} \frac{1}{f_z^q} \quad (4)$$

where  $f_z$  is the frequency of the element  $z$ , and  $q$  is the power considered. This metric ranges from 0 (disjoints sets) to a given maximum value depending on the considered corpus. Similarly to the original Adamic metric, the Psim- $q$  metric takes into account both the rarity and the size of the intersection. Several values for  $q$  have been tried, and the best results were obtained for  $q = 3$ . Therefore, from now on, we will consider the metric Psim-3.

#### D. Evaluation

Our goal is to assess how accurately Wi-Fi fingerprints can be used to link two different individuals. For this purpose, we build a classifier to separate the two sets  $L$  and  $NL$ , respectively of linked and non linked pairs of devices fingerprints. In order to fairly estimate the performance of the classifier, the fingerprint pairs were separated, shuffled and a list of fingerprints derived from  $L$  and  $NL$  was constructed. The task of the classifier is to re-link the fingerprints in  $L$  maximizing the fingerprints couples correctly linked while linking as few incorrect couples as possible. In practice, for each possible couple in the list our classifier computed the similarity metrics and kept only the couples with highest similarity. If the fingerprints pair similarity value is above a threshold then the candidate couple is considered linked; otherwise it is non-linked.

a) *Classification performances:* Binary classifiers are primarily evaluated using the classical false/true positives/negatives indicators. We can consider our binary classifier as a simple hypothesis test where the classifier is a detection scheme that tests the following null hypothesis: *The pair of devices corresponds to an underlying social link*. Given a set of  $n$  pairs of devices, containing  $n_P$  pairs with a social link (positive) and  $n_N$  with no social link (negative). In our case, we are interested in finding fingerprint pairs that are actually linked (true positives which number is  $n_{TP}$ ) while minimizing the number of pairs that are linked by mistake (false positives, which number is  $n_{FP}$ ). In addition, let us consider  $n_{FN}$  as the number of false negatives and  $n_{TN}$  as the number of true negatives. The false positive rate (FPR) is the proportion of all devices do not corresponding to an underlying link that have been wrongly reported as positive by the test, so  $\text{FPR} = \frac{n_{FP}}{n_{FP} + n_{TN}}$ . Similarly, the true positive rate (TPR) is the proportion of linked devices that have been rightly reported as such by the test, and we have  $\text{TPR} = \frac{n_{TP}}{n_{TP} + n_{FN}}$ .

To evaluate the efficiency of the classifier, we first plot in Figure 5 ROC (Receiver Operation Characteristics) curves observed for different similarity metrics and several thresholds. These plots show, for each threshold, the point corresponding to the false positive rate along the x-axis and to the true positive rate along the y-axis, with one curve per similarity metric. Obviously, the closer to the upper left corner of the

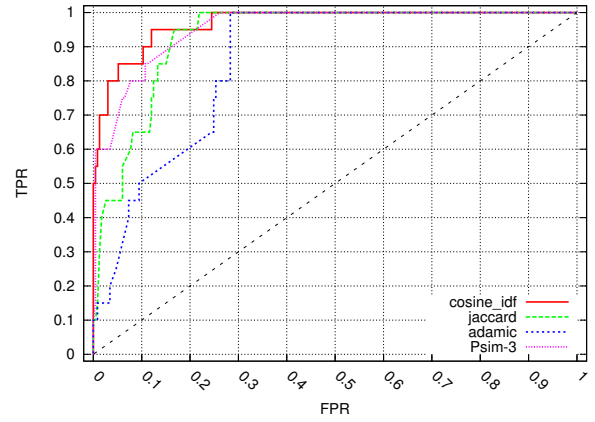


Fig. 5. ROC curve of the classifier.

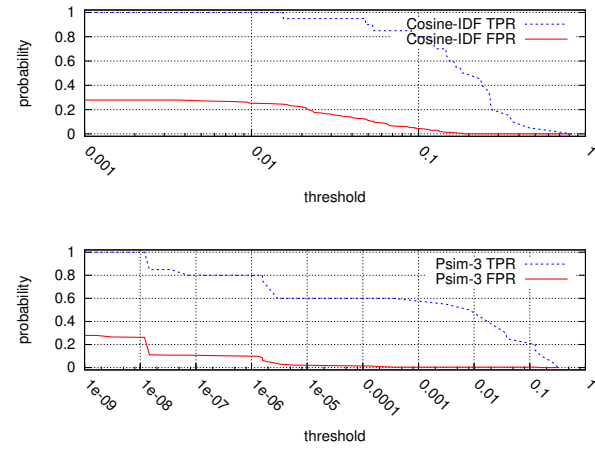


Fig. 6. TPR and FPR as a function of the threshold for Cosine-IDF and Psim-3 metrics.

graph a curve is, the better, since such points correspond to high true positive rates (i.e. a high proportion of positives being reported as such by the test) for low false positive rates (i.e. a small proportion of negatives incorrectly reported as positives). We observe that from this perspective Cosine-IDF and Psim-3 metrics outperform the other metric, offering excellent compromises between high true positive rates and low false positive rates.

Since the Jaccard index does not take into account the rarity of the common SSIDs, and hence suggests that the rarity of the intersection is less important than its cardinal, with no surprise, we can verify that it performs less efficient results than other metrics. Comparing the results of the Adamic metric and our modified version, the Psim- $q$ , we can observe that the change of weighting function, i.e. power of the frequency rather than a logarithmic function, has significantly improved the performances. Where the Adamic displayed poor performances, the Psim-3 performs as well as the two best metrics.

Another interesting property of ROC curves is that they show the optimal range for the threshold. Indeed, as the slope

of the ROC curve flattens, the increase in true positive rate is proportionally smaller than the corresponding increase in false positives. In other words, a lower threshold, although it always increases the true positive rate of the test, is not always productive as it eventually does more damage than good through increased false positive rates. In general, this means that the threshold of the similarity tests should be set to a value that yields a point in the “elbow” of the ROC curve. In practice, the choice of the threshold depends on the application of the classifier: one might favor detecting as much true positives as possible at the expense of a higher false positive rate; while in other cases, one might be interested in increasing the threshold so as to detect fewer true positives but minimizing the probability of mistakenly linking any two devices. We will now concentrate on the Cosine-IDF and Psim-3 metrics as both of them yield at least similar results than the other considered metrics.

Figure 6 shows the true positive rates and false positive rates variation for various thresholds, respectively for the Psim-3 and Cosine-IDF metrics. As expected, a higher threshold results in a more aggressive classification test that correctly classifies only a few of actually linked devices, but on the other end wrongly reports a tiny proportion of non linked devices.

Our study focuses on a set of thresholds providing *optimal* performances. Social and professional graphs are rather sparse, i.e. the number of existing edges is much smaller than the number of potential edges. Therefore the number of *false*, i.e. vertex pairs not connected by an edge, will be much higher than the number of *true*, i.e. vertex pairs connected by an edge. Given the difference between the size of the positive and negative sets, we focus on thresholds with low corresponding FPR, namely  $FPR < 0.1$ . Even with this strict constraint, thresholds with high and medium TPR are possible. For instance, for the Psim-3 a threshold of  $t = 1.5710^{-5}$  leads to a  $TPR = 0.8$  and  $FPR = 0.0772$ . Even if a part of the *positive* sets are missed, this will limit the number of *false positive*.

In our use case example, the investigation of a criminal group, two cases may be possible: either the goal is to reduce the set of suspects to a more manageable size, or to use the result of the classifier as an evidence. In the first case, additional information may be available on the potential suspects, and could be used to further refine the results returned by the classifier. Therefore having a high FPR may not be an issue. On the other hand, as missing positives is not acceptable, a high TPR should be targeted, e.g. by using Psim-3 with a threshold  $t = 1.19 \cdot 10^{-8}$ , which results in  $TPR = 1$  and  $FPR = 0.2618$ . In the second case, false positives are not acceptable, hence the FPR must be as small as possible. Therefore, a good threshold for the Psim-3 could be  $t = 0.162$  which results in  $TPR = 0.1$  and  $FPR = 0$ .

#### IV. LINKING DEVICES IN THE WILD

We apply the link detection scheme using the metrics defined in Section III-D to the public PubProbes dataset. This dataset is composed of more than 8K unique device identifiers, with collected fingerprints comprising of more than

TABLE I  
SELECTED THRESHOLD AND ASSOCIATED NUMBER OF PAIRS DETECTED IN THE PubProbes DATASET. CORRESPONDING TPR AND FPR ON THE CONTROLLED DATA SET.

	Thresh.	Nb. detected pairs	TPR <sup>4</sup>	FPR <sup>4</sup>
Cosine-IDF	0.188	215 384	0.5	0
	0.117	502 102	0.8	0.0300
	0.0153	3 934 564	1	0.2446
Psim-3	0.162	408	0.1	0
	$1.57 \cdot 10^{-5}$	88 476	0.8	0.0772
	$1.19 \cdot 10^{-8}$	3 812 524	1	0.2618

26K distinct SSIDs. We note that, since this dataset consists of fingerprints collected in the wild, no information on the links between the devices is available. In the light of our results in Section III-D, we will focus on two similarity metrics: *Cosine-IDF* and *Psim-3*. We consider three threshold values for each metric. The three thresholds have been selected respectively to yield (resp.) to values of  $FPR = 0$ ,  $TPR = 1$  and a desired trade-off between between FPR and TPR, from the results in Section III-D. In the following, we analyze the characteristics of the resulting set of linked devices from the PubProbes dataset. We derive additional insights about the general applicability of the selected metrics.

#### A. Results

Table I summarizes the threshold values chosen for the Cosine-IDF and the Psim-3 metrics, with the corresponding FPR and TPR values as obtained for the VolunteerProbes dataset.

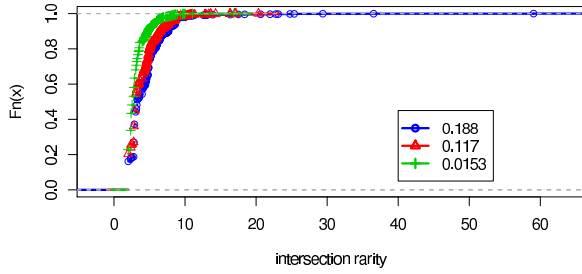
Our classifier looks for potentially similar fingerprints based on the selected threshold. Table I shows the number of linked device pairs for both chosen metrics. The Cosine-IDF metric, independently from the used threshold, detects a relatively large number of device pairs, compared to the Psim-3 metric. We note a property of the Cosine-IDF metric, which may result in inconsistencies when attempting to detect links between devices in the wild. When two fingerprints are identical, the resulting similarity score is always the highest (i.e. equal to one), regardless of the size of the fingerprints and the frequency of those SSIDs in the corpus. On the other hand, we note that Psim-3 (and more generally Psim- $q$ ) is more sensitive to both the variations in the number of SSIDs shared between the two compared fingerprints and the rarity of those SSIDs. In particular, in case of identical fingerprints, the Psim-3 similarity score still depends on the frequency (rarity) and the number of the common SSIDs.

Given the device pairs detected in PubProbes dataset, we further explore the underlying reasons why the devices have been linked. We now focus on the characteristics of the intersections of *linked* fingerprints. The rarity of SSIDs

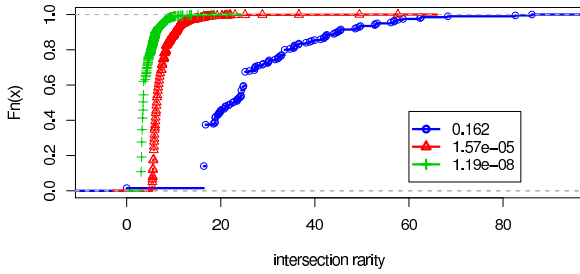
<sup>4</sup>The TPR and FPR in this table are those obtained with the VolunteerProbes data set in section III. They do not imply anything on the TPR and FPR that will be obtained on the PubProbes data set.



comprising these intersections is shown in Figure 7, while the size of intersections is shown in Figure 8.

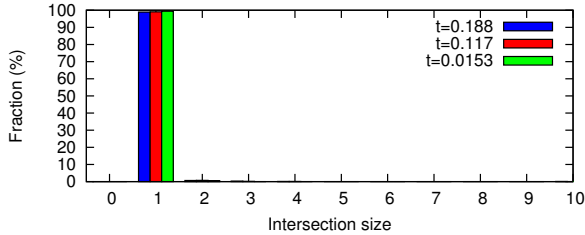


(a) Cosine-IDF

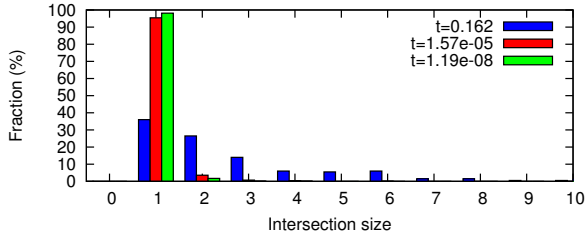


(b) Psim-3

Fig. 7. CDF of the Intersection rarity for device pairs detected in the PubProbes dataset for selected thresholds.



(a) Cosine-IDF



(b) Psim-3

Fig. 8. Intersection size for device pairs detected in the PubProbes dataset for selected thresholds.

We observe that for the Psim-3 metric, when the highest threshold is applied (curve labeled  $t = 0.162$  in Figures 7 and 8), more than 60% of the intersections of linked devices fingerprints have their sizes larger than 2, while for the two

TABLE II  
NUMBER OF CANDIDATES FOR EACH DEVICE IN THE VolunteerProbes DATASET WHEN PLUNGED IN THE PubProbes DATASET.

	Thresh.	Average	Min	Max
Cosine-IDF	0.188	34.025	0	142
	0.117	80.65	2	307
	0.0153	555.175	2	1411
Psim-3	0.162	0.475	0	2
	$1.57 \cdot 10^{-5}$	28.125	0	238
	$1.19 \cdot 10^{-8}$	437.425	2	1208

lower thresholds ( $t = 1.71 \cdot 10^{-4}$  and  $1.19 \cdot 10^{-8}$ ), the vast majority of the intersections are reduced to one SSID. In addition, these two lower thresholds result in a set of links in which a large majority of the intersection SSIDs have a rarity of less than 18. When applying the the highest threshold ( $t = 0.162$ ), the majority of linked fingerprints possess rare SSIDs. For the Cosine-IDF, the thresholds variation seems to have a small impact on the rarity and the size of the intersections of linked fingerprints. Indeed for the three thresholds, almost all the intersections are reduced to only one SSID. The rarity for the two higher thresholds appear to be sensibly similar and in the three cases the majority of intersections has a rarity lower than 10.

### B. Detecting links from the VolunteerProbes dataset embedded in the PubProbes dataset

We now focus on a scenario where given a device and its fingerprint, we would like to detect the potentially linked devices from a large dataset. For this purpose, the VolunteerProbes dataset is embedded into the PubProbes dataset and we apply the classifier (considering our chosen two metrics) to retrieve the links a priori known from the VolunteerProbes dataset established relationships. For each device in the VolunteerProbes data set, we collect all the devices returned by the classifier as linked to the considered device. The number of returned candidates is considered as a performance metric as it quantifies how well the initial set, composed of more than 8K devices, can be reduced to a more manageable size.

Table II presents the average/min/max number of retrieved candidates for each threshold. Obviously, for the two metrics decreasing the thresholds' value significantly increase the number of candidates. Again, depending on the application, one might favor detecting all the positives at the expense of false positives and a larger number of candidates. The Cosine-IDF returns much larger sets of candidates than the Psim-3. Focusing on the Psim-3 metric, we observe that the most restrictive threshold ( $t = 1.57 \cdot 10^{-5}$ ) yields to 0.475 candidates in average and a maximum of 2. The candidates' set is rather small, but the threshold is so high that it may miss some positive (in this case the TPR is only 0.1). For the intermediate threshold ( $t = 1.57 \cdot 10^{-5}$ ) we observe that in average 28.125 candidates are returned, which represents 0.35% of the PubProbes data set. For the lowest threshold ( $t = 1.19 \cdot 10^{-8}$ ), the average number rise to 437.425, i.e.

5.4% of the full set. This last threshold yields a TPR of 1 on the VolunteerProbes data set, but when it is applied to the PubProbes data set it returned large sets of candidates.

## V. DISCUSSION

This work shows that it is clearly possible to tie physical Wi-Fi devices together and, most likely, to infer relationship between the owners of those devices. This opens up the potential for the proposed technique to be used as an additional tool when investigating real world crimes. It may however also be subject to abuse and could result in breaches in privacy.

### A. Addressing possible limitations

The linked device pairs we used as ground truth have been collected from a set of volunteers' devices. We have shown that, in this sample dataset, Wi-Fi fingerprints can be used to infer the relationship between the devices' owners. However, one might argue that this sample may not be sufficiently representative of the whole population. We tested our tool in linking devices of other unknown individuals with no a priori knowledge of any established relationship. This was due to the difficulty of gathering ground truth evidence. However, a more thorough analysis of the collected public Wi-Fi fingerprints is left for future work, to try to establish implicit relationship (e.g. based on semantic analysis of some SSIDs in the fingerprints).

Finding linked devices in a population requires time that is quadratic in the population size, as all possible pairs must be tested for similarity. This might be too costly if one has millions of devices to match. A solution to this problem is to divide the matching task in two phases. First, divide devices in clusters that are likely to be linked. For example, one could choose devices that share at least one (even very popular) SSID, thus restricting the number of combinations that need to be tried. Second, test all possible combinations within a cluster.

Finally, during our experiments, we noticed that some operating systems broadcast the SSIDs with a meaningful order which represents either the preferences of users or the most recent associations to the APs. Our technique could be improved by exploiting this additional information.

### B. Counter-measures

Our technique primarily exploits the fact that wireless fingerprints can be easily collected. Disabling, or at least reducing the frequency of active probe requests is a first step to preventing large scale linkage of devices. However, as previously discussed, this will in turn create performance issues and might prevent devices from associating to APs with hidden SSIDs. Another class of solutions requires the deployment of a new dedicated protocol. Privacy preserving discovery services have been proposed in [8], [9]. The latter achieves the goal of hiding the SSIDs when probing, however they require software modifications in current access points and devices, which will hamper the adoption of such proposals.

## VI. CONCLUSION

We presented a mechanism capable of detecting links between individuals, by exploiting the information broadcast in plaintext by their wireless devices. We have shown on a controlled dataset that a relationship can be easily detected. To the best of our knowledge this is the first use of wireless data to establish link between users. This work demonstrates yet another privacy breach allowed by the 802.11 probe requests, and this should further support the initiatives aiming at privacy preserving Access Point discovery [8].

## REFERENCES

- [1] WiGLE: Wireless Geographic Logging Engine. <http://wigle.net/>.
- [2] Lada A. Adamic and Eytan Adar. Friends and Neighbors on the Web. *SOCIAL NETWORKS*, 25:211–230, 2001.
- [3] Loh Chin Choong Desmond, Cho Chia Yuan, Tan Chung Pheng, and Ri Seng Lee. Identifying unique devices through wireless fingerprinting. In *Proceedings of the first ACM conference on Wireless network security*, WiSec '08, pages 46–55, New York, NY, USA, 2008. ACM.
- [4] Nathan Eagle, Alex Sandy Pentland, and David Lazer. Inferring friendship network structure by using mobile phone data. *Proceedings of the National Academy of Sciences of the United States of America*, 106(36):15274–15278, 2009.
- [5] Jason Franklin, Damon McCoy, Parisa Tabriz, Vicentiu Neagoie, Jamie Van Randwyk, and Douglas Sicker. Passive data link layer 802.11 wireless device driver fingerprinting. In *Proceedings of the 15th conference on USENIX Security Symposium - Volume 15*, Berkeley, CA, USA, 2006. USENIX Association.
- [6] Ben Greenstein, Ramakrishna Gummadi, Jeffrey Pang, Mike Y. Chen, Tadayoshi Kohno, Srinivasan Seshan, and David Wetherall. Can Ferris Bueller still have his day off? protecting privacy in the wireless era. In *Proceedings of the 11th USENIX workshop on Hot topics in operating systems*, pages 10:1–10:6, Berkeley, CA, USA, 2007. USENIX Association.
- [7] Glenn Judd and Peter Steenkiste. Fixing 802.11 access point selection. *Computer Communication Review*, 32(3):31, 2002.
- [8] Janne Lindqvist, Tuomas Aura, George Danezis, Teemu Koponen, Annu Myllyniemi, Jussi Mäki, and Michael Roe. Privacy-preserving 802.11 access-point discovery. In *Proceedings of the second ACM conference on Wireless network security*, WiSec '09, pages 123–130, New York, NY, USA, 2009. ACM.
- [9] J. Pang, B. Greenstein, D. McCoy, S. Seshan, and D. Wetherall. Tryst: The Case for Confidential Service Discovery. In *Proceedings of HotNets*, Atlanta, GA, November 2007.
- [10] Jeffrey Pang, Ben Greenstein, Ramakrishna Gummadi, Srinivasan Seshan, and David Wetherall. 802.11 user fingerprinting. In *Proceedings of the 13th annual ACM international conference on Mobile computing and networking*, MobiCom '07, pages 99–110, New York, NY, USA, 2007. ACM.
- [11] Daniele Quercia and Licia Capra. Friendsensing: recommending friends using mobile phones. In *Proceedings of the third ACM conference on Recommender systems*, RecSys '09, pages 273–276, New York, NY, USA, 2009. ACM.
- [12] Ian Rose and Matt Welsh. Mapping the urban wireless landscape with Argos. In *Proceedings of the 8th ACM Conference on Embedded Networked Sensor Systems*, SenSys '10, pages 323–336, New York, NY, USA, 2010. ACM.
- [13] Fan Zhang, Wenbo He, Xue Liu, and Patrick G. Bridges. Inferring users' online activities through traffic analysis. In *Proceedings of the fourth ACM conference on Wireless network security*, WiSec '11, pages 59–70, New York, NY, USA, 2011. ACM.