

Measurement-Adaptive Cellular Random Access Protocols

Anastasios Giovanidis, Qi Liao, Slawomir Stanczak

► **To cite this version:**

Anastasios Giovanidis, Qi Liao, Slawomir Stanczak. Measurement-Adaptive Cellular Random Access Protocols. *Wireless Networks*, Springer Verlag, 2014, 20 (6), pp.1495-1514. <10.1007/s11276-014-0689-y>. <hal-00829629>

HAL Id: hal-00829629

<https://hal.inria.fr/hal-00829629>

Submitted on 14 Mar 2016

HAL is a multi-disciplinary open access archive for the deposit and dissemination of scientific research documents, whether they are published or not. The documents may come from teaching and research institutions in France or abroad, or from public or private research centers.

L'archive ouverte pluridisciplinaire **HAL**, est destinée au dépôt et à la diffusion de documents scientifiques de niveau recherche, publiés ou non, émanant des établissements d'enseignement et de recherche français ou étrangers, des laboratoires publics ou privés.

Measurement-Adaptive Cellular Random Access Protocols

Anastasios Giovanidis · Qi Liao ·
Sławomir Stańczak

Received: date / Accepted: date

Abstract This work considers a single-cell random access channel (RACH) in cellular wireless networks. Communications over RACH take place when users try to connect to a base station during a handover or when establishing a new connection. Within the framework of Self-Organizing Networks (SONs), the system should self-adapt to dynamically changing environments (channel fading, mobility, etc.) without human intervention. For the performance improvement of the RACH procedure, we aim here at maximizing throughput or alternatively minimizing the user dropping rate. In the context of SON, we propose protocols which exploit information from measurements and user reports in order to estimate current values of the system unknowns and broadcast global action-related values to all users. The protocols suggest an optimal pair of user actions (transmission power and back-off probability) found by minimizing the drift of a certain function. Numerical results illustrate considerable benefits of the dropping rate, at a very low or even zero cost in power expenditure and delay, as well as the fast adaptability of the protocols to environment changes. Although the proposed protocol is designed to minimize the amount of discarded users per cell, our framework allows for other variations (power or delay minimization) as well.

This work was supported by Alcatel-Lucent Bell Labs, Stuttgart, Germany.

A. Giovanidis
INRIA - TREC, 23 avenue d'Italie, CS 81321, 75214 Paris Cedex 13, France
E-mail: anastasios.giovanidis@inria.fr

Q. Liao
Fraunhofer Institute for Telecommunications, Heinrich Hertz Institute (HHI), Einsteinufer
37, 10587 Berlin, Germany
E-mail: qi.liao@hhi.fraunhofer.de

S. Stańczak
HHI and Heinrich-Hertz-Lehrstuhl für Informationstheorie und theoretische Information-
stechnik, Technische Universität Berlin, Einsteinufer 27, 10587 Berlin, Germany
E-mail: slawomir.stanczak@hhi.fraunhofer.de

Keywords Random Access Channel · Self-Organizing Network (SON) · Measurements · Collision Resolution · Drift Minimization · Power Control

1 Introduction

Random multiple access schemes have traditionally played an important role in wireless communication systems. Their use has been established especially in cases of bursty source traffic, where a multiplicity of users requires access from a central receiver. Starting with the ALOHA protocol [4], several modifications have been suggested in the years to come aiming at performance improvement [15]. A very common application is in wireless LANs, such as the IEEE 802.11 protocol (see [10], [18], [32] and references therein). The random access channel (RACH) is also included in the 3rd Generation Partnership Project (3GPP) as an important element within the Long Term Evolution (LTE) of cellular systems [2], [1], [3].

In the case of wireless cellular networks, a very limited frequency resource is reserved for the cases when a user requests for access from a base station (BS) or in order to be synchronized for uplink/downlink data transmission. RACH communications further occur during the hand-over phase [24], because of user mobility, or when a user is (re-)initiating some new service. RACH channel can be used as well during the load balancing procedure [16], when cell-edge users are pushed to migrate to a neighboring BS after modification of the cell individual offset. Hence, *as many users as possible should be served by this limited resource, for an important number of connectivity-related actions.*

Due to limited resources, connection failure can occur in cases when the system is not well adapted to the incoming traffic. Consider for example large spaces in cities where occasionally a vast amount of requests for service can be demanded, although normally the system is not heavily loaded (e.g. metro stations, market streets, stadiums, city squares, areas close to concert and conference halls etc.). In such places, it is very common that the system fails to support the service for all users and one of the reasons can be high collision rate in the RACH channel. It is thus necessary, within the context of Self Organizing Networks (SON) [1], [28] that the system can adapt to abrupt environmental changes that influence its functionality. Thus the RACH self-optimization problem is identified as an important case in the LTE standardization process [1, paragraph 4.7].

Unfortunately, in all such cases, the cellular system has almost zero user-specific information. Each BS can however broadcast certain information with cell-specific access details [6], which allow the users to adapt their operation. Furthermore, carrier sensing as understood in the 802.11 is here not possible, which provides limitations to the design of high performance protocols. This is because, the possibility for a user to sense whether the channel is idle or not, is not provided and collision events cannot be avoided.

The procedure is called random access, due to the fact that the users access the channel in a random fashion. In the ALOHA case, when more than

one user transmit simultaneously and their signals are detected we say that a collision occurs and all efforts are considered unsuccessful. LTE standardization, instead, provides the possibility for each user to randomly choose over a common pool of orthogonal frequencies [2] and a collision takes place when at least two users make the same choice during the same transmission interval. After a failure, each source enters a back-off mode. The period of user silence is usually chosen having an exponential distribution but other possibilities can be used when such choice is adapted dynamically. This back-off time can generally be modeled in the slotted case by a per slot probability of transmission, less than 1. Using this technique, an increase in throughput is achieved at the cost of additional delay. Furthermore, since the detection or not of a user signal is also critical for the success, an important parameter is the transmission power of each user as well.

In short, the access (back-off) probability and the signal power are the two user actions, with the aim to optimally exploit the random access resource, in the sense of maximizing the rate of served users and minimizing the dropping user rate. An interesting idea to improve the decision making is to make certain global information of the system state available by broadcasting it from the base station. This is compatible with LTE standards where other type of information is already considered as globally known [2]. The information should represent the current system situation, so that users may adapt their actions dynamically. In this way the delay-throughput tradeoff can be enhanced. The cost is certain signaling and computations for the updates at the BS side. Furthermore, the BS should have a way to gather relevant empirical information from its environment, related to the RACH functionality.

Based on the above idea, the current work suggests a dynamically adaptive RACH protocol for the cellular systems focused on LTE design, which maximizes a sense of throughput and minimizes dropping. Empirical information is gathered through measurements and user reports. After certain processing at the BS side global system parameters are broadcast to users who require access. The protocol suggested, which is based on adaptation of the system to changes in the environment, guarantees near-optimal performance related to a certain throughput-related metric.

1.1 Related Literature

Bianchi [10] has been the first to provide a precise performance analysis for a random access protocol, which uses exponential back-off times. His approach considers a saturated system model, where the number of users is kept fixed to N and all have a packet to send at each time slot. The results are based on the key approximation that the collision probability of a packet transmitted is constant and independent, which decouples the evolution of the system to N 1-dimensional Markov Chains.

A different approach has been suggested by Sharma et al. [32], where more general back-off strategies (generalized geometric) are considered for the IEEE

802.11 protocol in order to take service differentiation into account. One of the major differences is that the system state is described by the current number of users per effort, while the collision probability is not independent per user.

First suggestions for dynamically controlling multiple access protocols can be found in Hajek and van Loon [19] as well as Lam and Kleinrock [22]. More recently Markov Decision Processes (MDPs) have been used in [7] to derive optimal power and back-off policies for a set of backlogged users in slotted ALOHA random access systems. Cases of unknown user number have also been taken into account.

Gupta et al [18] have recently suggested a dynamic back-off adaptation mechanism, where contention is regulated by broadcasting a so called contention level to the users. This is similar to the idea used in our approach. Works of particular interest are also those of Liu et al [25] and Cheung et al [12] which use the framework of utility-optimization for the optimal choice of transmission probabilities.

Channel-aware scheduling approaches in conjunction with random access mechanisms (which do not find application here due to the lack of such information in the system) include [14], [36], and more recently [5].

How random access works in the 3GPP-LTE systems is thoroughly described in [6], where certain suggestions are presented, related to a self-organizing mechanism with information exchange between users and the Base Station. Investigations on the RACH power control include [23] and references therein, whereas an analytical framework for RACH modeling and optimization is given in [38].

Finally, rather interesting for the CSMA/CA case is the dynamic adaptation mechanism suggested in [20] where users adapt their time window based on measurements and estimation of the average number of idle time slots of the random access channel. It involves an AIMD (Additive Increase Multiplicative Decrease) rule for the updates. Unfortunately, such a technique cannot be directly applied to the cellular system due to the unavailability of the sensing mechanism, it can however give ideas for application of a similar mechanism for the power updates.

1.2 Contributions and Outline

We investigate a saturated system model, where a number of N users are always present within a wireless cell and try to gain access to the Base Station. An effort is successful when the user transmits a certain sequence, which is detected at the Base Station and at the same time no collision occurs. The event of collision will happen when the transmitted sequence of another user is also detected. Furthermore, LTE standards allow for orthogonal sequences randomly chosen by the users, so that even when two user signals are detected, access to both may be granted.

In our analysis the miss-detection probability and collision probability are left as unknown variables. However, higher power increases the chances for

detection and reduces collision probability, whereas use of access (otherwise back-off) probabilities reduces the collision events. Transmission power and access probability are the user action pair.

After description of the action space and state space, the transition probabilities are given and the evolution of the system is described by a Markov Chain. The *event of dropping*, when the users exhaust the maximum number of efforts allowed, plays a crucial role. Unfortunately, due to the unknown expression for the success probability no steady-state analysis is possible. The above are analytically presented in Section 2.

What we can do however, is to choose the actions myopically optimal, in the sense that they optimize the expected change in one time-slot for some function of the state space. For this we introduce in our analysis the drift of a delay-related function. To motivate further our formulation, it is shown in the Appendix how the solution of the drift minimization problem is related to the solution of an ideal Markov Decision Problem for optimal performance in the steady-state. Our problem formulation is found in Section 3.

The function chosen in this work is related to a sense of throughput, and *is chosen such that the ratio of dropped users can be minimized*. Other performance measures, by choice of an appropriate function, can also be incorporated within our analysis with slight variations.

To solve the problem online a protocol is introduced. Its steps are presented in Section 4. The BS collects measurements as well as user reports to estimate the unknown probabilities (miss-detection, contention, success) at the Base Station side, as well as the current number of users, which is actually unknown in a real system. After solution of an optimization problem and a close-loop control problem, the BS broadcasts two values, the current *contention level* and the current *power transmission level*, so that the users can update their action pair.

Numerical simulations for the performance of the protocol in a wireless cell are presented in Section 5. Advantages and trade-offs in dropping rate, delay and power expenditure are discussed and explicitly illustrated in plots. Finally, Section 6 concludes our work.

2 System Model

2.1 General Description

We consider an arbitrary but fixed total number of N users labeled by $n = 1, \dots, N$ trying to randomly obtain access to a cell Base Station (BS) over the wireless channel. The time is slotted, with each slot interval normalized to 1 and indexed by t . At each time slot all users belonging to the user set have the possibility to access the channel by transmitting a preamble sequence (as specified in the LTE standards). There are two criteria that determine the success of an attempt.

- The *Signal-to-Noise Ratio (SNR)* at the BS exceeds a predefined *detection threshold* γ_d . If the SNR is below the threshold, we assume that a miss-detection occurs and the user has to retry. The **Detection Miss Probability** (DMP) can be written as the probability of an outage event

$$Q_n^o(p_n, t) = \mathbb{P}[SNR_n(p_n(t), h_n(t)) \leq \gamma_d] \quad (1)$$

where p_n is the chosen transmission power and the probability is taken over the random channel quantity denoted by h_n and is i.i.d. over time t . In general we will consider that the BS does not approximate somehow the expression for outage. This is reasonable since the information over the user positions and the exact fading statistics is not known a priori.

- *No collision of transmitted signals occurs.* Typically in the slotted ALOHA protocol [4], when more than one user attempts to access the channel during the same time slot a collision occurs and all affected users have to repeat the effort. In more recent wireless protocols, such as those suggested in LTE standards [3], a pool of orthogonal sequences (e.g. Zadoff-Chu) is made available to all users. Each user chooses one sequence from this set randomly (uniform distribution) and the probability of collision can be made less than 1 when two users transmit simultaneously.

In our model, the probability of collision is conditional on the transmission and the detection of signals at the BS side. That is, a user may collide only if he transmits at time slot t and his signal is detected. Assuming that N users transmit at time slot t with transmission probability vector $\mathbf{1}_N := [1, \dots, 1]$ and k -out-of- N (we write $k \setminus N$) are detected, the overall **Collision Probability** (CP) - the probability that at least one collision occurs - is an increasing function of both N and k

$$Q^c(N, \mathbf{1}_N, k, t) \quad (2)$$

As in the case of the DMP we consider that the base station does not have an exact closed form expression to calculate the CP and the above quantity is in general unknown.

2.2 Action Space

There are *two actions* that user n can take for transmission at time slot t .

- The choice of the **transmission power level** $p_n(t)$, which influences the detection of the transmitted signal at the BS, as shown in (1) and eventually the collision probability (through the number of detections k). In general Q_n^o exhibits a monotone decreasing behavior with respect to power.
- The choice of the **access (or transmission) probability** $b_n(t)$ per user, at a given slot t . This influences the number of simultaneously transmitting users in the cell and therefore directly affects the collision probability in (2). The *back-off* probability simply equals $1 - b_n(t)$.

The set of actions for the entire system of N users at t is denoted by the $2N$ -dimensional vector $\mathbf{A}(t) := (\mathbf{b}_N(t), \mathbf{p}_N(t))$. The action space per time-slot is denoted by \mathbb{A} and is the Cartesian product $[0, 1]^N \times [0, P_1] \times \dots \times [0, P_N]$, where P_n is a given individual user power constraint per slot. Furthermore, $\tilde{\mathbf{A}} = \{\mathbf{A}(1), \dots, \mathbf{A}(t), \dots\}$.

Until the end of the subsection, we provide a discussion on the influence of choice for the back-off probability. In the definition (2) no back-off action is taken, $b_n(t) = 1, \forall n$ and all users transmit simultaneously. On the other hand, assigning $b_n(t) \leq 1$ to some users, displaces the transmissions in time and the effect of collision is mitigated. Since less than N users simultaneously compete for the access of the medium in some slot t , the collision probability is reduced. This can also be shown analytically.

The overall collision probability of N users present within the cell, with access probability N -length vector \mathbf{b}_N , $b_n \leq 1$ and exactly k users detected, equals

$$Q^c(N, \mathbf{b}_N, k, t) = \sum_{J=0}^N Q^c(J, \mathbf{1}_J, k, t) \cdot Q^t(\mathbf{b}_N, J \setminus N) \quad (3)$$

where $Q^t(\mathbf{b}_N, J \setminus N)$ is the probability that - given a probability vector \mathbf{b}_N - exactly J -out-of- N users in the cell transmit. The equality follows from the total probability theorem, since the union of events $J = 0, \dots, N$ transmissions exhaust the sample space. The transmission probability of $J \setminus N$ users equals

$$Q^t(\mathbf{b}_N, J \setminus N) = \sum_{l=1}^{L(N, J)} \prod_{i=1}^J b_{q_l^{J, i}} \prod_{j=1}^{N-J} (1 - b_{\hat{q}_l^{J, j}})$$

where the summation over l is taken over all possible $L(N, J) = \binom{N}{J}$ combinations (sampling without replacement) of J users transmitting and $N - J$ users remaining silent, $q_l^{J, i}$ is the index of user i belonging to combination l that transmits and $\hat{q}_l^{J, j}$ is the index for the user j that does not transmit.

Proposition 1 *Given $\mathbf{b}_N < \mathbf{1}_N$ (the inequality means that $b_n < 1$ for at least one n) and exactly $1 \leq k \leq N$ detections, we have that*

$$Q^c(N, \mathbf{b}_N, k, t) < Q^c(N, \mathbf{1}_N, k, t) \quad (4)$$

Proof : The events $J = 0, \dots, N$ exhaust the sample space and we have that their probability sum equals $\sum_{J=0}^N Q^t(\mathbf{b}_N, J \setminus N) = 1$. Furthermore, for $J < k$ it holds $Q^c(J, \mathbf{1}_J, k, t) = 0$ since there cannot be more detections than transmissions. The higher the number of transmissions, the higher the collision probability, which means $Q^c(J, \mathbf{1}_J, k, t) \leq Q^c(N, \mathbf{1}_N, k, t), \forall J$ and the inequality is strict for $J < k$. From (3) we have

$$\begin{aligned}
Q^c(N, \mathbf{b}_N, k, t) &< Q^c(N, \mathbf{1}_N, k, t) \cdot \sum_{J=0}^N Q^t(\mathbf{b}_N, J \setminus N) \\
&= Q^c(N, \mathbf{1}_N, k, t)
\end{aligned}$$

which concludes the proof.

2.3 Success Probability, Failure Event and Dropping

From the above, success of a transmission is an event which occurs when (i) a user transmits, (ii) the user signal is detected and (iii) no collision occurs. In the use of orthogonal sequences/preambles, it suffices that no two users sharing the same sequence collide. In general, conditioned that a user transmits, the **Success Probability** (SP) equals

$$Q_n^s(N, k, \mathbf{b}_N, p_n, t) = (1 - Q_n^o(p_n, t)) \cdot (1 - Q^c(N, \mathbf{b}_N, k, t)) \quad (5)$$

Observe, that the success probability of a single user does not depend only on his own action set (b_n, p_n) , but also on the choices of access probabilities of the other users, as well as the number of detected users k . The latter is further dependent on the transmission power chosen for $j \neq n$, so we can instead write

$$Q_n^s(N, \mathbf{b}_N, \mathbf{p}_N, t) \quad (6)$$

In the case of an unsuccessful effort the user may retry. Each user is constrained to at most M *access efforts* and the efforts are indexed by m . After M unsuccessful efforts the user is considered discarded and replaced by a new-coming one, so that the total user number in the system always remains equal to N . The same holds when a user leaves the system after success. Therefore, we say that the system is *saturated*. The number of users at effort m in time slot t is denoted by $X_m(t)$ and from the above it follows that

$$\sum_{m=1}^M X_m(t) = N, \forall t. \quad (7)$$

We occasionally write in the following that a user at effort $m \in \{1, \dots, M\}$ belongs to *user class* m .

2.4 System States and Transition Probabilities

We define the state of user n at slot t as the current transmission effort $S_n(t) \in \{1, \dots, M\}$, whereas the system state as the N -dimensional vector

$$\mathbf{S}(t) = (S_1(t), \dots, S_N(t)). \quad (8)$$

Altogether, there are M different user states and M^N different system states (e.g for a cell with 10 users and maximum 5 efforts, the number is approximately 10 million). The entire state space is denoted by \mathcal{S} . It is easy to verify that the system state forms an N -dimensional Markov chain.

We group the transitions for each user into (a) returning to state 1 in case of transmission and success, (b) moving to the next effort in case of transmission and failure and (c) backing-off and remaining in the same state. The expressions for the transition probabilities are given below. (Dependence of the functions on other parameters except the time index is omitted for brevity of presentation.)

– For $1 \leq m < M$:

$$\mathbb{P}[S_n(t+1) = 1 | S_n(t)] = b_n(t) \cdot Q_n^s(t) \quad (9)$$

$$\mathbb{P}[S_n(t+1) = S_n(t) + 1 | S_n(t)] = b_n(t) \cdot (1 - Q_n^s(t)) \quad (10)$$

$$\mathbb{P}[S_n(t+1) = S_n(t) | S_n(t)] = 1 - b_n(t) \quad (11)$$

– For the user boundary state $m = M$:

$$\mathbb{P}[S_n(t+1) = 1 | S_n(t) = M] = b_n(t) \quad (12)$$

$$\mathbb{P}[S_n(t+1) = M | S_n(t) = M] = 1 - b_n(t) \quad (13)$$

A user in state M will either back-off, in which case he remains in the same state, or transmit. When a user transmits, he will either succeed or fail. In both cases the next state is set to 1, the user is removed from the system and is replaced by a new one so that the total number is always equal to N . The transition probabilities in (12)-(13) for $m = M$ coincide with those for $m < M$, given by (9)-(11) when $Q_n^s(t) = 1$. In other words, to keep the system saturated, the Markov Chain evolves as if transmission at state M always results in success.

This is why, it is further important for the analysis to specify the user **Drop-
ping Probability** (DP)

$$Q_n^d(N, \mathbf{b}_N, \mathbf{p}_N, M, t) = b_n(t) \cdot (1 - Q_n^s(t)) \cdot \mathbb{P}[S_n(t) = M] \quad (14)$$

If the exact expressions for the DMP and CP were available, it would be possible to calculate the steady state probabilities of the system, by forming the $M^N \times M^N$ transition probability matrix and using the Perron-Frobenius theory [9, Ch. 2 and 8]. Since the number of states is finite, and for each user the probabilities (9)-(11) and (12)-(13) sum up to $\sum_{m=1}^M \mathbb{P}[S_n(t+1) = m | S_n(t)] = 1$ (stochastic matrix), a steady state with probability sum equal to 1 always exists, although certain states may be transient and have zero probability.

3 Problem Statement as Drift Minimization

Since the exact expressions for the detection miss probability Q_n^o as well as contention probability Q^c are unknown (hence the success probability Q_n^s , which appears in (9) and (10)), it is not possible to use the standard steady-state analysis as followed in [33], [11], [30], [29], [21] and [25] (among others) to derive long-term performance measures and optimize the system. Even if this would be possible however, the solution of a system of such an immense number of variables would bring difficulties (remember the number of 10 million variables for $N = 10$ and $M = 5$). The same problems are met in a Markov Decision Problem (MDP) formulation, as followed e.g. in [22] and [7].

Furthermore, in a realistic setting, we would like to propose a protocol, which takes into consideration the fact that within the wireless cell, users appear and leave the system after a while, whereas the fading situation changes unpredictably. These two factors greatly influence the miss-detection and collision probabilities, which do not remain fixed until infinity, but exhibit large fluctuations over time. This falls within the concept of SON's which should self-adapt and self-optimize the wireless system parameters as a reaction to such unpredictable changes from outside without human intervention.

For the above reasons we make use of the notion of *drift for the Markov Chain* under study, in order to achieve an improvement in the system performance by appropriate choice of actions. The idea of drift is commonly used in the literature of stability of systems with infinite states [35], [34], [26], [27]. In such cases, if we can find, for a given positive Lyapunov function, an action policy which keeps the drift negative for the entire state space - except possibly for some finite subspace - the system is guaranteed to remain stable. This comes from direct application of Foster's theorem (see [8, Prop. 5.3(ii)]). Intuitively the negative drift gives the function of states a tendency to decrease in expectation at each step, as long as it is outside the aforementioned subspace, so that in the long run the value a state can take will not be unbounded (and the stability is guaranteed). In our case the state space is finite due to the finiteness of M . However, since the amount of users that exceed M efforts are eventually dropped, stability of the system refers to keeping the number of dropped users finite. (Alternative application of the drift minimization to a problem with $M \rightarrow \infty$ and no dropping does not change much the policy and results).

The drift equals per definition, the expected change in the Lyapunov function from t to $t + 1$. By choosing an appropriate non-negative function of the system state $V(\mathbf{S}(t))$ related to some performance criterion, we can choose actions that optimize performance at each time-slot. Since it is impossible to know how the system will evolve in future slots, and since expressions for DMP and CP are not available, the best thing we can do is to provide a one-step look-ahead (**myopic**) policy for the system, given its current state and measurements performed on time t , which estimate unknown parameters. Specifically, given that the system state at t is $\mathbf{S}(t)$, the drift is defined as

$$D(V(\mathbf{S}(t)), \mathbf{A}(t)) := \mathbb{E}[V(\mathbf{S}(t+1)) - V(\mathbf{S}(t)) | \mathbf{S}(t)] \quad (15)$$

and is also a function of the action set $\mathbf{A}(t)$, since the actions control the system state transition probabilities $p_{s_t \rightarrow s_{t+1}}$.

The function V to be used is the sum of user states and is linear. It can be rewritten as the sum of cardinalities of users at a state, weighted by their effort index.

$$V(\mathbf{S}(t)) = \sum_{n=1}^N S_n(t) = \sum_{m=1}^M m \cdot X_m(t) \quad (16)$$

A user who is currently at a higher effort, contributes more to the function, than users at lower ones. By **minimizing** the drift of such function we wish to choose appropriate actions in order to have success with as few efforts as possible. This has following objectives:

- keep a good trade-off between power consumption and delay until success per user
- diminish the proportion of users who are dropped
- maximize a notion of total system throughput

To understand the last point, observe that each user n contributes a ratio $\frac{1}{m_n^*}$ to the total system throughput if $m_n^* \leq M$ efforts are required for success and contributes nothing if the user is dropped. Consider now as a single virtual user, the set N of users in the network. By use of the Renewal-Reward theorem [17], the long-term throughput of such a virtual user (considering only number of efforts and not the total number of time-slots required including user silence slots) will be the ratio $\frac{N}{\mathbb{E}[V(\mathbf{S})]}$. Alternative Lyapunov function could change the objective of the minimization, giving emphasis to total delay or power consumption and can be understood as alternative formulations of the same general problem and solution methodology.

Let us consider state-dependent, rather than user-dependent actions, in the sense that all users who are at class m in slot t should make the same choice for transmission power and back-off. The specific drift expression can now be derived to yield

$$\begin{aligned} D(V(\mathbf{S}(t)), \mathbf{A}(t)) &= \sum_{n=1}^N \{1 \cdot \mathbb{P}[S_n(t+1) = 1 | S_n(t)] + \\ &\quad (S_n(t) + 1) \cdot \mathbb{P}[S_n(t+1) = S_n(t) + 1 | S_n(t)] + \\ &\quad S_n(t) \cdot \mathbb{P}[S_n(t+1) = S_n(t) | S_n(t)] - S_n(t)\} \\ &\stackrel{(9)-(13)}{=} \sum_{n=1}^N b_n(t) \cdot [1 - S_n(t) \cdot Q_n^s(N, \mathbf{b}_N, \mathbf{p}_N, t)] \\ &\stackrel{state\ dep.}{=} \sum_{m=1}^M X_m(t) b_m(t) \cdot [1 - m Q_m^s(N, \mathbf{b}_N, \mathbf{p}_N, t)] \quad (17) \end{aligned}$$

The drift minimization problem at each time slot t is

$$\begin{aligned} \mathbf{min} \quad & D(V(\mathbf{S}(t)), \mathbf{A}(t)) \\ \mathbf{s.t.} \quad & \mathbf{A}(t) \in \mathbb{A} \end{aligned} \quad (18)$$

A further motivation to pose the problem as a drift minimization is provided in the Appendix. It is shown that (18) is a myopic solution of an MDP with objective the minimization of the expected Lyapunov function at the steady-state (for $t \rightarrow \infty$). For the formulation and solution of the MDP, the expression for $Q_n^s, \forall n$ should be available and the channel/user statistics should remain unchanged over the entire time horizon.

What is needed to solve the above problem per slot? It follows from (17) that the following information should be available at the BS side:

1. The cardinality $X_m(t)$ of users at each effort m .
2. The current value of $Q_m^o(t)$ at each m .
3. The current value of $Q^c(t)$.

Using 2. and 3. and the product in (5) the actual value of $Q_m^s(t)$ can be obtained. Although the BS does not know these values it may estimate the variables and with it approximate the objective function, using *measurements* related to channel and service quality, as well as *information* reported directly by the user set. The goal is to use these estimates for optimization, in order to achieve significant performance gains, while keeping an additional overhead of exchanged information as small as possible.

In this way, a sequence of problems with different numbers of users, contention and miss-detection probabilities can be solved over time, which help the cell to follow and adapt to dynamic unpredictable changes. The steps of the proposed adaptive protocol are summarized in Table 1.

4 Five Steps of the Protocol

Before proceeding to the algorithm, we first discuss over the action pair of access probabilities and transmission powers. Considering the access probabilities, we adopt the approach in [18] (similar functions are also found in [25] and references therein), with per effort probability given by

$$b_m(t) = \min \left\{ \frac{f(m)}{L(t)}, 1 \right\}, \forall m. \quad (19)$$

Here and hereafter, L is called *contention level* and $f(m)$ is some fixed function of the transmission effort. In this way, a simple variable L can simultaneously define the entire set of transmission probabilities. By choosing f to be monotone increasing in m , priority is given to users with higher efforts, while such users obtain lower priorities when f is strictly monotone decreasing. Typical back-off protocols follow the exponential rule, which reduces by half the probability of accessing the channel after each failure, so in this case $f(m) = 2^{-m+1}$

and $b_1 = 1/L$. Other possible choice could be $f(m) = m^{-a}$, $a \in \mathbb{R}_+$ (in this work and the simulations to follow the case $a = 1$ is mostly used). Exponents $a > 1$ will lead to an overly conservative system with large delays for users in higher states, whereas $a \ll 1$ tends to treat users of all classes with the same priority. In the following, the expression in (19) will sometimes be replaced by $b_m(t) = f(m)/L(t)$ and the constraint $b_m(t) \leq 1$ is taken into account in the constraint set of the minimization problem.

We consider, furthermore, the transmission power to vary per effort as a ramping function. This approach is often considered in practice (for related approaches, the reader is referred to [6] and references therein). The power level for the first effort is given by p and for all efforts by the expression

$$p_m(t) = p(t) + (m - 1) \cdot \Delta p, \forall m \quad (20)$$

where Δp is the ramping step with a fixed (tunable) value. Thus, analogously to the case of the backoff probabilities, the vector of power actions can be defined by appropriate choice of the *power level* $p(t)$ per time slot.

4.1 Step 1: Measurements and User Reports

When users attempt to randomly access the channel, we assume that the BS counts the overall number of detected user efforts, as well as the overall number of successful efforts. Given an observation window of length W , both the quantities depend on the time interval $[t - W + 1, t]$ and are denoted by $N_d(t)$ and $N_s(t)$ respectively. Furthermore, after every successful effort, the users are assumed to *report* to the BS, the total number of trials required to get access. In this way, the BS can keep track of the number of successes at effort m , within the observation window, denoted by $n_{s,m}(t)$, $\forall m$. The reports over the success state also provide information over the overall number of transmissions of users being at some state m . As an example, if within the observation period two users report success at effort 3 and 2 respectively, the BS can estimate the number of transmissions at state $m = 1$ by 2, at $m = 2$ by 2 and at state $m = 3$ by 1, without considering users that have yet not declared success, or are dropped. We denote these estimates by $n_{t,m}(t)$, $\forall m$ and their sum, which equals approximately the number of access efforts within the observation window, by $N_t(t) = \sum_{m=1}^M n_{t,m}$. Altogether, the set of gathered empirical information, updated per time slot, is represented by

$$\mathcal{I}(t) := \{N_d(t), N_s(t), N_t(t), n_{s,m}(t), \forall m, n_{t,m}(t), \forall m\} \quad (21)$$

4.2 Step 2: Estimation of Unknowns in the Objective function

Using the above counters, we can now approximate the unknowns in the expression (17) that are briefly discussed in points 1. - 3. in the previous Section.

As far as the unknowns in 2. and 3. are concerned, the actual overall contention probability $Q^c(t)$ and per effort success probability $Q_m^s(t)$ in (5), can be estimated by contention and success **rates**, an idea which has already appeared in [6]. Observe that the additional information about the per effort miss-detection probability $Q_m^o(t)$ cannot be deduced from the above measurements. What can be calculated, instead, is an overall rate of miss-detection (DMR), without differentiating between efforts, which we denote by $R^o(t)$.

$$R^c(t) = 1 - \frac{N_s(t)}{N_d(t)} \quad (\text{contention rate}) \quad (22)$$

$$R_m^s(t) = \frac{n_{s,m}(t)}{n_{t,m}(t)}, \forall m \quad (\text{success rate per effort}) \quad (23)$$

$$R^o(t) = 1 - \frac{N_d(t)}{N_t(t)} \quad (\text{miss - detection rate}). \quad (24)$$

Regarding the number of users currently within the cell (discussed in 1.) and their estimation, we proceed as follows. Instead of attempting to find integer values, we consider arrival rates. As the total arrival rate of users we consider the ratio $\frac{N_s(t)}{W}$, which is the time dependent ratio of accepted users, divided by the observation window. The above is used under the assumption that only a very small fraction of the users are dropped throughout the process, so that almost all users appearing within the cell, will eventually have at some point a success. Taking dropped users into account requires an additive correcting term that may be deduced from empirical observations.

The window is considered long enough, so that the resulting success rates per state, $R_m^s(t)$ in (23), approach the actual success probability per effort. These can replace the entries in the one-step transition probability matrix in equations (9)-(11) and (12)-(13). The steady state probability distribution is found by solving the system $\pi = \pi \cdot \hat{\mathbf{P}}_M$, where π is the row vector of the unknown probabilities for the M states with $\|\pi\|_1 = 1$ and \hat{P}_M is the transition probability matrix. The solution equals

$$\pi_1(t) = \left(1 + \sum_{i=2}^M \frac{b_1}{b_i} (1 - R_1^s(t)) \cdots (1 - R_{i-1}^s(t)) \right)^{-1} \quad (25)$$

$$\pi_m(t) = \pi_1(t) \cdot \left(\frac{b_1}{b_m} (1 - R_1^s(t)) \cdots (1 - R_{m-1}^s(t)) \right), \quad 2 \leq m \leq M. \quad (26)$$

The ratios of the unknown backoff probabilities b_1/b_m are involved in the expression above. From the previous discussion $b_1/b_m = f(1)/f(m)$, which is known since the function f is chosen a priori. With these observations and definitions at hand, we can estimate the user arrivals per effort according to

$$\frac{X_m(t)}{W} \approx \pi_m(t) \cdot \frac{N_s(t)}{W} \quad (27)$$

where the π_m 's are the probabilities given by (25) and (26).

4.3 Step 3: Solving the Problem

Once step 2 is performed, we can formulate the objective function to approximately solve problem (18) and with it find the optimal actions per time slot. To this end, we break down the problem into two subproblems and propose two sub-algorithms based on the measurements and estimated quantities described above.

Backoff Probability Problem: The objective function at the base station is estimated by

$$\hat{D}(V(\mathbf{S}(t)), L(t)) := \frac{1}{L(t)} \cdot \left[\sum_{m=1}^M \pi_m \frac{N_s(t)}{W} f(m) \cdot (1 - m \cdot R_m^s(t)) \right], \quad (28)$$

where the success probability Q_m^s is substituted by the success rate R_m^s in (23) and the average user number $\frac{X_m}{W}$ by the expression in (27). As long as such estimates are close to the actual values and are considered reliable, the BS can solve a problem with parameters adapted to the changing environment.

When the expression in brackets above [...] is positive, the objective function is convex and decreasing in the contention level variable L (behaves as $+\frac{1}{L}$). When [...] is negative, the objective is concave and increasing in L (behaves as $-\frac{1}{L}$). Due to the monotonicity and concavity/convexity, the optimization will have as a result either maximum or minimum value of L depending on the sign of the term inside the square brackets.

In the following we provide the boundary values L_{\min} and L_{\max} of the domain of L . The lower bound on L follows from the fact that all access probabilities are less than or equal to 1:

$$\frac{f(m)}{L(t)} \leq 1, \forall m \Rightarrow L(t) \geq L_{\min} := \max\{f(m)\}. \quad (29)$$

To obtain an upper bound, we further provide a constraint on the probability of a time slot being idle (no user transmits). This probability is less than or equal to \mathcal{A} , which is a design factor for the system.

$$\begin{aligned} \mathbb{P}[IDN] &= \prod_{m=1}^M \left(1 - \frac{f(m)}{L(t)}\right)^{\frac{X_m(t)}{W}} \leq \mathcal{A} \Rightarrow \\ &\sum_{m=1}^M \pi_m \frac{N_s(t)}{W} \cdot \log\left(1 - \frac{f(m)}{L(t)}\right) \leq \log(\mathcal{A}). \end{aligned} \quad (30)$$

The left handside is increasing with L , thus the inequality provides an upper bound on L . If we solve (30) for equality, we then derive the value of L_{\max} . Notice furthermore that, all values of L within the interval $[L_{\min}, L_{\max}]$ are feasible solutions of the contention level.

Proposition 2 *Considering the problem of minimizing \hat{D} in (28) subject to the upper and lower bound constraints on L , the following necessary and sufficient optimality conditions hold:*

– if $\left[\sum_{m=1}^M \pi_m \frac{N_s(t)}{W} f(m) \cdot (1 - m \cdot R_m^s(t)) \right] \geq 0$ then the optimal contention level equals L_{\max} and is found by solving

$$\sum_{m=1}^M \pi_m \frac{N_s(t)}{W} \cdot \log \left(1 - \frac{f(m)}{L^*(t)} \right) = \log(\mathcal{A}) \quad (31)$$

– if $\left[\sum_{m=1}^M \pi_m \frac{N_s(t)}{W} f(m) \cdot (1 - m \cdot R_m^s(t)) \right] < 0$ then the optimal contention level equals L_{\min}

$$L^*(t) = \max \{f(m)\}. \quad (32)$$

Power Control Problem: In order to identify optimal transmission levels, one could proceed along similar lines as above, to formulate an optimization problem, given the back-off probabilities $f(m)/L^*(t)$ and the contention rates $R^c(t)$ from (22). In order to determine the objective function based on (17), which is denoted by $\tilde{D}(V(\mathbf{S}(t)), p(t))$, the closed form expression for the detection-miss probability $Q_m^o(t)$ as a function of power may be necessary. It is however unlikely that the channel's fading behavior in practical systems can be accurately represented by a closed-form expression, especially since in the random access cellular system the user position is not known to the BS.

A different approach - which is adopted here - is to use a *Multiplicative-Increase-Additive-Decrease* (MIAD) control rule, as in the case of congestion control protocols in TCP [13]. In this way, the BS reacts to the change of the estimated DMR stepwise, by increasing or decreasing the power level $p(t)$ per time slot, depending on the current value $R^o(t)$. We set two levels of action, a high detection-miss level DMR^H and a low one DMR^L . The control loop then works as follows: When DMR^H is exceeded, the power level is increased by multiplication with a tunable factor $1 + \delta_1$. This action increases considerably the transmission power since miss-detection is highly non-desirable. When the ratio falls under the low level DMR^L , which is considered satisfactory for the system performance, the power is reduced in a conservative way, to reduce the energy consumption on the mobile devices, by subtracting a constant tunable amount of δ_2 . For instance δ_2 can be set equal to the ramping step Δp in (20). The control loop is then described by the power updates

$$p^*(t) = \begin{cases} p^*(t-1) \cdot (1 + \delta_1), & \text{if } R^o(t) > DMR^H \\ p^*(t-1) - \delta_2, & \text{if } R^o(t) < DMR^L \end{cases} \quad (33)$$

Obviously, updates on the per-effort ramping steps or user-specific power control could be much more beneficial instead of the update in the global power level $p(t)$. Furthermore, it is obvious that by varying $p(t)$ globally, power consumption will increase not only for users in higher efforts but also

for those in their first effort, which may not be necessary. However, there are certain difficulties in providing a different type of feedback. Most importantly, there is no user channel state information available at the BS and channel adaptation is impossible. Furthermore, based on the possible approximations that - given the measurements and the reports - are suggested, only a global miss-detection rate R^o can be estimated in (24) and no state-specific or user-specific rates (say R_m^o). We cannot approximate, in other words, the rate of miss-detection for a user at different states and as a result we cannot suggest different state-dependent power levels. Finally, state-dependent power control would increase considerably the feedback information broadcast to all users. For all the above reasons, the suggestion of the MIAD rule was considered more appropriate.

4.4 Step 4 and 5: Broadcast of Information to the Users and Action Calculation

The last two steps of the proposed algorithm involve the broadcasting of the action-related information to the users and the choice of appropriate actions by them. The broadcast information includes the pair consisting of the contention level and the power level

$$\mathcal{J}(t) := \{L^*(t), p^*(t)\}. \quad (34)$$

Let us assume that the expressions in (19) and (20) for the success probability and the power level per effort are known a priori to the mobile stations. Since each user is aware of its current individual state $S_n(t)$, calculation of its own action pair is possible, according to

$$A_n(S_n(t), \mathcal{J}(t)) = (b_n(t), p_n(t)) = \left(\frac{f(S_n(t))}{L^*(t)}, p^*(t) + S_n(t)\Delta p \right). \quad (35)$$

Note that if the required power and access functions ($f(\bullet)$ and the ramping step Δp) is not available at the mobiles, the BS could broadcast the entire vector of computed transmission powers and access probabilities to the users so that they choose the actions according to their current effort.

A remark considering implementation issues of such protocols is that the updates of these two levels are not expected to take place very frequently, but rather only at the rate of estimated change of user traffic and fading conditions. Furthermore, user reports and broadcast feedback from the BS is already suggested in standardization reports, so that the proposed protocol complies fully with the existing standardization literature [2], [1], [3], without introducing additional protocol information.

5 Numerical results

5.1 Description of the simulations setting

The proposed algorithm has been implemented in a single cell scenario. The users are randomly positioned, with a 2D uniform distribution and the algorithm is initially evaluated for the cases of $N = 1, 2, \dots, 14$ [users/time slot] present in the cell. Considering the transmission scenario, each user randomly chooses at each attempt one sequence, out of a pool of 10 orthogonal sequences, and transmits with a chosen backoff probability and transmission power. The number 10 is used for simulation purposes, whereas the actual number suggested in the LTE literature equals 64; however not all users have access to the entire pool of sequences (see [2]) since the sequence allocation procedure is more complicated than the simple uniform choice we use here.

The signal experiences path loss due to the user-BS distance. Fast fading is initially not modeled (this will be considered in the second part of the Section for the power consumption evaluation) but the channel is considered AWGN with noise mean equal to -133.2 dBm. We have to note that in case fast-fading were also implemented, a further randomness in the channel would affect the signal detection and the protocol performance. To keep things simple, we consider first only the randomness of user positioning which affects the slow-fading coefficients - also unknowns during the procedure. The evaluation of the protocol's performance will not change much by adding more randomness factors.

An effort is successful when among the detected sequences there exists no pair that collides, in the sense that no two detected users choose the same sequence for transmission. A user is dropped when the effort fails at the maximum access effort $M = 5$. After a success or an event of dropping, users are removed from the waiting-for-transmission list, and the same number of newly arriving users are added, each given a random position on the plane.

Power and access probability for the users are computed per slot equal to the action pair in (35), for $f(m) = m^{-1}$. The choice of exponent -1 is not conservative (whereas a higher exponent would be) while at the same time it takes class differentiation into account. Important is to notice that the expression of the function f greatly affects the delay. On the other hand, the delay can be controlled by the parameter \mathcal{A} which is system-operator-dependent and tunes the expected idle period. The set of values for the parameters of the system simulation are summarized in Table 2.

Several factors for the protocol design have been left open for choice. One of them, as mentioned already, has been the desired idle probability \mathcal{A} . The higher factor \mathcal{A} is, the more the delay suffered by the system but the higher the benefits in dropping rate and power consumption are. Other important parameters are the steps δ_1 , δ_2 and bounds DMR^H , DMR^L of the MIAD rule, the access function f and the adaptive window length W , which defines how fast should the protocol adjust to environmental changes. A summary of

these tunable factors and how they are chosen within the simulation setting under consideration is provided in Table 3.

5.2 Comparison to a Fixed "open loop" Power Fixed Backoff protocol

The suggested algorithm is compared to a scenario, where access probabilities and target power are held fixed, while the ramping step for the transmission power is predefined and same for all efforts. The fixed scenario is in other words an "open-loop" control scheme, with predefined constant $(p, \Delta p)$. The choice for the fixed backoff probability in the comparison scenario, equals $[b_1, b_2, b_3, b_4, b_5] = [0.5, 0.4, 0.3, 0.2, 0.1]$ and is such that the average occurrence of an idle slot is less than $\mathcal{A} = 0.05$, hence the channel is kept busy with user efforts for access during most of the time. In this sense, the comparison between the adaptive-protocol suggested and a fixed protocol is more fair for a tunable factor of $\mathcal{A} = 0.05$ or less. How the average idle probability changes between $\mathcal{A} = \{0.05, 0.25, 0.5\}$ and the fixed case can be seen in Fig. 1. We refer the reader to the Parameter Table 2 for the actual values used throughout these simulations. The above fixed scenario is denoted by (FPFB) for Fixed Power Fixed Backoff. Two types of protocols are used for performance comparison:

- **Fixed Power Dynamic Backoff (FPDB) protocols.** In this case the "open loop" power control of the protocol is the same as in the fixed scenario FPFB case. The backoff mechanism adapts to measurements as suggested in the protocol description of this work (Paragraph 4.3, Backoff Probability Problem).
- **Dynamic Power Dynamic Backoff (DPDB) protocols.** In this case both backoff and power are adapted as the protocol suggests in Paragraph 4.3. The backoff comes from the solution of the drift minimization problem, while the target power p is adapted according to the MIAD rule.

5.3 Performance Evaluation: Lyapunov Function and Number of Efforts

The performance of the scheme and its comparison to the fixed scenario FPFB is initially illustrated in the plots of the performance metric in Fig.2 and the plots of the average number of access efforts until success in Fig.3. The two figures show a close relation to each other, due to the choice of the specific Lyapunov function V . Since V was chosen as the sum of user efforts, lower values translate into better performance for the protocol. In all six curves, our protocol outperforms the FPFB scenario in the metric chosen as well as in the average number of user efforts. Furthermore, all DPDB cases show improved performance compared to FPDB, given a certain value of the parameter \mathcal{A} . The higher the value of tunable factor \mathcal{A} , the better the performance and the less the average efforts required up to packet reception.

5.4 Performance Evaluation: Delay, Power Consumption and Dropping Rate

The three most important performance measures in random access that can illustrate the improvements of the suggested protocol are the total delay suffered by a packet until success (including backoff slots), the total transmission power used until success as well as the percentage of users dropped because the maximum number M of efforts is exceeded. These are shown in Fig.4(a), 4(b), 5(a), 5(b) and 6(a), 6(b) respectively, for (a) the FPDB case and (b) the DPDB case.

From the plots, it is illustrated how an increase of the parameter \mathcal{A} influences positively power consumption and dropping rate at the cost of delay. Furthermore, the DPDB schemes perform better than the FPDB schemes in terms of delay and dropping, but have a cost in power consumption. Altogether, the performance of the protocol is tunable, to the requirements of the service provider. If the delay is not an issue, power can be considerably saved and the number of users dropped is reduced. As long as delay becomes an issue, transmission power can still be saved by using only the FPDB protocols. The dropping rate is also improved in such a case.

The most important observation is the fact that the suggested protocol in all cases considerably reduces the dropping rate of the incoming users. Hence, the random access resource is better exploited than in the FPFb case. This is due to the specific choice of performance function that we chose to incorporate in the drift minimization (sum of states). Other functions could potentially minimize different system performance measures (e.g. power or delay). Dynamic backoff, in our protocol, generally allows the system to remain stable - in the sense that the rate of dropped users does not tend to "explode" - for a higher value of N . The behavior of this measure also improves for higher \mathcal{A} , which is reasonable since allowing a higher idle probability, distributes the transmissions of users among a larger number of time-slots.

A more detailed comparison of the schemes is given in the following figures. Specifically, Fig.7(a) and Fig.7(b) illustrate the beneficial use of the MIAD power control for the detection miss ratio, which leads to a drastic reduction of the average number of miss-detected signals in the system for DPDB protocols. Obviously the miss-detection curves for FPDB are similar to the FPFb case, since no power control is applied. Furthermore, considering the contention ratio CR, both Fig.8(a) and Fig.8(b) show benefits compared to the fixed FPFb case. Interestingly, the DPDB cases are slightly worse than the FPDB. This is because a higher number $N_d(t)$ is detected for the same window size W , so that the CR calculated as in (22) appears higher.

5.5 Protocol temporal adaptation to channel fluctuations and deep fades

In the current subsection, we further illustrate the performance of our protocol - which operates with parameters given in Table 3 - for a scenario with fluctuations and abrupt changes of the fading conditions. Such investigation

shows how fast and with which cost in power expenditure can the protocol adapt to environmental changes. Specifically, we use a factor β to multiply the long-term fading of each user. Initially the factor has an expectation 1 and its value fluctuates uniformly within the interval $[0.7, 1.3]$. After a certain time-interval we initiate a sudden deterioration of the channel to an average of 0.8, which returns to 1 after some time. The realization of such fading scenario for a given user is presented in Fig. 9(a).

Very important here is to show how the protocol performs over time and adapts to the changes. Compared to the fixed power scenario, our suggested protocol can react very fast to the changes by an increase in power consumption during the period of the deep fade, which keeps the DMR always within the defined interval $[DMR^L, DMR^H]$. This can be observed in Fig.9(b) and Fig.9(c).

5.6 Protocol temporal adaptation to traffic load fluctuations

To complete the evaluation of our protocol, we illustrate the temporal behavior of the DPDB protocol compared to the fixed case FPFb, when the arrival traffic load varies with time. The chosen idle parameter is $\mathcal{A} = 0.25$. All other parameters follow Table 3, noticing that the window size is $W = 200$ slots. Specifically, we consider a scenario where from 0 to 1000 time slots the users arrive in the cell with an average value of 5 [users/sec], the average arrival rate increases to 10 [users/sec] from 1000 to 2000 slots and reduces again to 5 [users/sec] from 2000 to 3000 slots. The traffic scenario over time can be found in Fig. 10(a) and the temporal evaluation of FPFb and DPDB in Fig. 10(b), 10(c), 10(d), 10(e).

Specifically, the improvement of DPDB compared to the FPFb over the performance measure is evident in Fig. 10(b). As a consequence of the chosen performance function, a considerable improvement in the dropping rate is shown in Fig. 10(e), where the dropping rate, even with the abrupt change of the average traffic load from 5 to 10 [users/slot] does not exceed the 0.1% for DPDB. This is achieved with almost zero cost in power consumption as shown in Fig. 10(d) and usually even better delay as shown in Fig. 10(c) compared to the FPFb case. As the plots show, our protocol functions as promised with reference to the dropping rate and hence the optimal exploitation of the available resources, in order to serve the maximum possible rate of incoming users.

One may observe an overshoot and a delayed response in Fig. 10(c) and 10(d) starting at the beginnings of the abrupt changes from 5 to 10 [users/sec] and from 10 to 5 [users/sec]. The reason is the choice of a long window $W = 200$ slots, and the power control factors δ_1 and δ_2 which we left as in the previous evaluation plots - for coherence reasons - and shown in Table 3. If we optimally select these values and choose the parameter \mathcal{A} appropriately, we can adapt our protocol to different scenarios of traffic load variations. Furthermore, we may

choose whether we wish to save in power or delay, while aiming for maximum user service, but this depends on the system needs.

6 Conclusions

We have suggested a dynamically adaptive protocol which updates the user access probabilities and transmission powers in cellular random access communications for LTE systems, with the aim to maximize the served load of the cell. The protocol is based on measurements and user reports at the base station side, which allow for an estimation of the number of users present within the cell, as well as the quantities of detection-miss and contention probability. The protocol updates take place per time slot in a myopic fashion. By solving a drift minimization problem for the contention level and using closed loop updates for the transmission power level by a MIAD rule, the BS coordinates the actions chosen by the users, by broadcasting the pair $(L^*(t), p^*(t))$.

The protocol was constructed based on a specific choice of performance function - *the sum of system states*. This function aimed at maximizing the usage of the restricted random access resource in the cellular system and consequently at minimizing the ratio of dropped users. Simulations results have shown the considerable performance increase of the protocol with minimum cost and occasionally even benefit in delay and power consumption. The performance of our protocol is tunable with parameters that can be controlled by a system designer, such as the idle parameter \mathcal{A} and the power steps δ_1 , δ_2 and Δp to achieve the desired performance depending on the actual scenario.

The algorithmic steps, together with the methodology of the drift minimization for a certain measure of interest, provide a general suggestion to treat problems of self-organization in wireless networks. Considering the specific scheme, a large variation of algorithms can be extracted, by choosing e.g. some different state function for the performance measure, or by introducing other kinds of user reports, which may provide more information to the central receiver, at the cost of increase in signaling. Furthermore, a larger action set can definitely provide a higher performance, compared to the proposed one - which introduces two possible values for the contention level (high/low) and two actions for the power level (increase/decrease). Even in this scheme however, which is characterized by an “economy” of signaling and information exchange, the results - as illustrated by numerical examples - are very beneficial, especially as the user number in the cell increases.

References

1. 3GPP TR 36.902 "Self-configuring and self-optimizing network (SON) use cases and solutions", release 9
2. 3GPP TS 36.300 (v 8.7.0) (May 2009) "Technical specification group radio access network; Evolved universal terrestrial radio access (E-UTRA) and evolved universal terrestrial radio access network (E-UTRAN); overall description" Release 8
3. 3GPP TS 36.321 (V 10.4.0) 3rd Generation Partnership Project; Technical specification group radio access network; Evolved universal terrestrial radio access (E-UTRA); Medium Access Control (MAC) protocol specification, Release 10, Dec 2011
4. Abramson, N.: The ALOHA system - Another alternative for Computer Communications. Proc. AFIPS Fall Joint Comput. Conf. **27** (1970)
5. Al-Harathi, Y., Borst, S., Whiting, P.: Distributed adaptive algorithms for optimal opportunistic medium access. *Mobile Netw Appl* (Springer) **16**, Issue 2, 217–230 (April 2011)
6. Amirijoo, M., Frenger, P., Gunnarsson, F., Moe, J., Zetterberg, K.: On Self-Optimization of the Random Access Procedure in 3G Long Term Evolution. Proc. IEEE Integrated Network Management-Workshops, 2009. pp. 177–184 (Jun. 2009, New York, NY, USA)
7. del Angel, G., Fine, T.L.: Optimal power and retransmission control policies for random access systems. *IEEE/ACM Trans. on Networking* **12**, no. 6, 1156 – 1166 (Dec. 2004)
8. Asmussen, S.: *Applied Probability and Queues*. Springer (NY, 2000)
9. Berman, A., Plemmons, R.J.: *Nonnegative matrices in the mathematical sciences*. SIAM Classics in Applied Mathematics (1994)
10. Bianchi, G.: Performance analysis of the IEEE 802.11 distributed coordination function. *IEEE JSAC* **18**, issue:3, 535–547 (Mar. 2000)
11. Boorstyn, R.R., Kershbaum, A., Maglaris, B., Sahin, V.: Throughput analysis in multihop CSMA packet radio networks. *IEEE Trans. on Communications* **COM-35**, no.3, 267–274 (March 1987)
12. Cheung, M.H., Mohsenian-Rad, A.H., Wong, V.W., Schober, R.: Random access for elastic and inelastic traffic in WLANs. *IEEE Trans. on Wireless Communications* **9**, no. 6, 1861–1866 (June 2010)
13. Chiu, D.M., Jain, R.: Analysis of the increase and decrease algorithms for congestion avoidance in computer networks. *Computer Networks and ISDN Systems* **17**, North Holland, 1–14 (1989)
14. Dimic, G., Sidiropoulos, N.D., Zhang, R.: Medium Access Control - Physical Cross-Layer Design. *IEEE Signal Processing Magazine* **4** (Sep. 2004)
15. Ephremides, A., Hajek, B.: Information theory and communication networks: an unconsummated union. *IEEE Trans. on Inf. Theory* **44**, no. 6, 2416–2434 (Oct. 1998)
16. Giovanidis, A., Liao, Q., Stanczak, S.: A distributed interference-aware load balancing algorithm for LTE multi-cell networks. In: *Proceedings International ITG Workshop on Smart Antennas (WSA)*, Dresden, Germany (March 2012)
17. Giovanidis, A., Wunder, G., Boche, H.: A short-term throughput measure for communications using ARQ protocols. Proc. 7th ITG Conf. on SCC (2008)
18. Gupta, P., Sankarasubramanian, Y., Stolyar, A.: Random-Access Scheduling with Service Differentiation in Wireless Networks. *INFOCOM 2005* **3**, 1815 – 1825
19. Hajek, B., van Loon, T.: Decentralized dynamic control of a multiaccess broadcast channel. *IEEE Trans. on Automatic Control* **AC-27**, no. 3, 559–569 (June 1982)
20. Heusse, M., Rousseau, F., Guillier, R., Duda, A.: Idle sense: An optimal access method for High Throughput and Fairness in rate diverse Wireless LANs. Proc. ACM SIGCOMM'05 (Philadelphia, Pennsylvania, USA, Aug. 21-26 2005)
21. Kleinrock, L., Lam, S.S.: Packet switching in a multiaccess broadcast channel: Performance evaluation. *IEEE Trans. on Communications* **COM-23**, no.4, 410–423 (April 1975)
22. Lam, S.S., Kleinrock, L.: Packet switching in a multiaccess broadcast channel: Dynamic control procedures. *IEEE Trans. on Communications* **COM-23**, no. 9, 891–904 (Sept. 1975)

23. Lee, W., Kim, D., Choi, S., Park, K.J., Choi, S., Han, K.Y.: Self-optimization of RACH power considering multi-cell outage in 3GPP LTE systems. Proc. of the 75th VTC Spring (2012)
24. Liao, Q., Kaliszan, M., Stanczak, S.: A virtual soft handover method based on base station cooperation with fountain codes. In: Proceedings of the 17th European Wireless Conference, Vienna, Austria (Apr. 2011)
25. Liu, J., Yi, Y., Proutiere, A., Chiang, M., Poor, H.: Towards utility-optimal random access without message passing. *Wirel. Commun. Mob. Comput.* (published online) **00**:, 1–12 (2009)
26. Neely, M., Modiano, E., Rohrs, C.: Power Allocation and Routing in Multibeam Satellites with Time-Varying Channels. *IEEE/ACM Trans. on Networking* **11**, No 1 (Feb. 2003)
27. Neely, M., Modiano, E., Rohrs, C.: Dynamic Power Allocation and Routing for Time-Varying Wireless Networks. *IEEE JSAC* **23**, No. 1 (Jan 2005)
28. Osterbo, O., Grondalen, O.: Benefits of Self-Organizing Networks (SON) for mobile operators. Hindawi Publishing Corporation, *Journal of Computer Networks and Communications*, (2012)
29. Papapanagiotou, I., Vardakas, J., Paschos, G., Logothetis, M., Kotsopoulos, S.: Performance evaluation of IEEE 802.11e based on ON-OFF traffic model. Proc. of the 3rd international conference on Mobile multimedia communications (MobiMedia) (2007)
30. Proutiere, A., Yi, Y., Chiang, M.: Throughput of random access without message passing. Proc. 42nd Annual Conference on Information Sciences and Systems, (CISS). (2008)
31. Puterman, M.L.: *Markov Decision Processes: Discrete Stochastic Dynamic Programming*. Wiley & Sons (2005)
32. Sharma, G., Ganesh, A., Key, P.: Performance analysis of contention based medium access control protocols. *INFOCOM 2006* pp. 1–12 (Apr. 2006)
33. Takagi, H., Kleinrock, L.: Throughput analysis for persistent CDMA systems. *IEEE Trans. on Communications* **COM-33**, no. 7, 627–638 (July 1985)
34. Tassiulas, L., Ephremides, A.: Stability Properties of Constrained Queueing Systems and Scheduling Policies for Maximum Throughput in Multihop Radio Networks. *IEEE trans. on Automatic Control* **37**, No. 12 (Dec 1992)
35. Tassiulas, L., Ephremides, A.: Dynamic Server Allocation to Parallel Queues with Randomly Varying Connectivity. *IEEE Trans. on Inf. Theory* **39**, no 2 (March 1993)
36. Tong, L., Zhao, Q., Mergen, G.: Multipacket reception in random access wireless networks: From signal processing to optimal medium access control. *IEEE Comm. Magazine* pp. 108–112 (Nov. 2001.)
37. Williams, D.: *Probability with Martingales*. Cambridge (1991)
38. Yilmaz, O.N.C., Hamalainen, J., Hamalainen, S.: Self-optimization of Random Access Channel in 3GPP LTE. Proc. 7th International Wireless Communications and Mobile Computing Conference (IWCMC) (2011)

Appendix - Relation between the Drift Minimization and a Markov Decision Problem Solution

We begin this section by considering an ideal setting, meaning that all expressions are known and the system is fully controllable by the choice of actions. Let $V(\mathbf{S}(t))$ be a non-negative function of the system state and let $\mathcal{M}(V, \tilde{\mathbf{A}})$ be a performance metric related to the steady state reached when $t \rightarrow \infty$, if the initial state is $\mathbf{S}(0)$. The metric is a function of the entire set of actions $\tilde{\mathbf{A}}$

$$\mathcal{M}(V, \tilde{\mathbf{A}}) := \lim_{t \rightarrow \infty} \mathbb{E}[V(\mathbf{S}(t)) | \mathbf{S}(0)]. \quad (36)$$

If the actions are chosen per time-slot t from the set $\mathbf{A}(t)$, the following general MDP can be posed:

$$\begin{aligned} \mathbf{min} \quad & \mathcal{M}(V, \tilde{\mathbf{A}}) \\ \mathbf{s.t.} \quad & \mathbf{A}(t) \in \mathbb{A}, t = 0, 1, \dots \end{aligned} \quad (37)$$

Proposition 3 *The MDP in (37) can be solved using the dynamic programming tools. The optimal solution satisfies Bellman's equation [31]*

$$J(\mathbf{S}) = \min_{\mathbf{A} \in \mathbb{A}} \left\{ D(V(\mathbf{S}), \mathbf{A}) + \sum_{\mathbf{S}' \in \mathcal{S}} p_{\mathbf{S} \rightarrow \mathbf{S}'} J(\mathbf{S}') \right\}, \forall \mathbf{S} \in \mathcal{S} \quad (38)$$

for the cost-to-go function $J(\mathbf{S})$, where \mathbf{S} is the possible state at the next time slot, while the transition probabilities $p_{\mathbf{S} \rightarrow \mathbf{S}'}$ are functions of the actions chosen. The solution is state-dependent, meaning that the optimal actions depend on the system state and not on time.

Corollary 1 *The solution of the drift minimization problem (18) at each time slot t , is a suboptimal solution to the MDP in (37). It is called one-stage look-ahead (myopic), in the sense that the actions are chosen per slot, considering only the transition to the next state and not the entire cost-to-go.*

Proof of Proposition 3

We first need the following lemma

Lemma 1 *The performance measure can be written as an infinite sum of expected drifts over the discrete time axis, given the initial state $\mathbf{S}(0)$*

$$\mathcal{M}(V, \tilde{\mathbf{A}}) = V(\mathbf{S}(0)) + \sum_{t=0}^{\infty} \mathbb{E}[D(V(\mathbf{S}(t)), \mathbf{A}(t)) | \mathbf{S}(0)]. \quad (39)$$

Proof : Let $\mathcal{F}^{(t)} := \{\mathbf{S}(0), \dots, \mathbf{S}(t)\}$ be the information over the system realizations up to slot t . Obviously $\mathcal{F}^{(0)} \subseteq \mathcal{F}^{(t)}$ (formally we call $\{\mathcal{F}^{(t)}, t \geq 0\}$ a filtration and $\mathcal{F}^{(0)}$ is a sub- σ -algebra of $\mathcal{F}^{(t)}$) and the tower property for expectations [37, p.88] holds. Hence,

$$\begin{aligned} \mathbb{E}[V(\mathbf{S}(t+1)) | \mathbf{S}(0)] &\stackrel{Tower}{=} \mathbb{E}\left[\mathbb{E}\left[V(\mathbf{S}(t+1)) | \mathcal{F}^{(t)}\right] | \mathcal{F}^{(0)}\right] \\ &\stackrel{Markov}{=} \mathbb{E}\left[\mathbb{E}\left[V(\mathbf{S}(t+1)) | \mathbf{S}(t)\right] | \mathbf{S}(0)\right] \\ &\stackrel{(15)}{=} \mathbb{E}\left[D(V(\mathbf{S}(t)), \mathbf{A}(t)) | \mathbf{S}(0)\right] + \mathbb{E}[V(\mathbf{S}(t)) | \mathbf{S}(0)] \end{aligned}$$

and by repeating the process for $t, \dots, 0$ and taking the limits for $t \rightarrow \infty$ we reach the result.

Now we can continue with the proof of the Proposition. Consider the series in (39) up to a finite horizon $T + 1$ and denote the related sum by $\mathcal{M}_T(V, \tilde{\mathbf{A}})$. Then the expected drift term for some $\tau \leq T$ equals

$$\mathbb{E}[D(V(\mathbf{S}(\tau)), \mathbf{A}(\tau)) | \mathbf{S}(0)] = \sum_{\mathbf{S}(1)} \dots \sum_{\mathbf{S}(\tau)} p_{s_0 \rightarrow s_1} \dots p_{s_{\tau-1} \rightarrow s_\tau} D(V(\mathbf{S}(\tau)), \mathbf{A}(\tau))$$

It can be observed that $p_{s_{\tau-1} \rightarrow s_\tau}$, which can be controlled by the actions $\mathbf{A}(\tau - 1)$ appear in all summands of $\mathcal{M}_T(V, \tilde{\mathbf{A}})$, for $\tau \leq \hat{t} \leq T$ and not for $0 \leq t \leq \tau - 1$. Following this observation, the optimal choice of actions $p_{s_T \rightarrow s_{T+1}}^*$ are found by solving $\min_{\mathbf{A}(T) \in \mathbb{A}} \mathcal{M}_T(V, \tilde{\mathbf{A}})$, the cost-to-go at T .

The cost-to-go can be verified to satisfy the recursion, $\forall \mathbf{S}(\tau - 1) \in \mathcal{S}$:

$$J(\mathbf{S}(\tau - 1)) = \min_{\mathbf{A}(\tau-1) \in \mathbb{A}} \sum_{\mathbf{S}(\tau)} p_{s_{\tau-1} \rightarrow s_\tau} (V(\mathbf{S}(\tau)) - V(\mathbf{S}(\tau - 1)) + J(\mathbf{S}(\tau))).$$

The expression holds as well, when we let the horizon $T \rightarrow \infty$. Thus taking $\tau \rightarrow \infty$ results in (38).

TABLES

Table 1 GENERAL SELF-OPTIMIZATION ALGORITHM

STEP 1	Gather empirical information \mathcal{I} at the BS.
STEP 2	Estimate unknown factors (see 1. - 3. above).
STEP 3	Solve the resulting optimization problem in (18).
STEP 4	Broadcast action-related information \mathcal{J} .
STEP 5	Calculate at the user side the required actions, based on \mathcal{J} .

Table 2 PARAMETER TABLE

Parameters	Value
Wireless Network	Single cell
User distribution	Uniform within cell
Number of users in cell	$\{1, 2, \dots, 14\}$
Sequence pool size	10
Fixed Tx Power	250 mW
Power ramping step Δp	20 mW
Maximum Tx Power	500 mW
Path loss PL	$128.1 + 37.6 \log(D \text{ km})$ dB
Noise	-133.2 dBm
SNR threshold	8 dB
Maximum effort M	5
Fixed backoff probability	$[0.5, 0.4, 0.3, 0.2, 0.1]$
Number of slots	15000 slots

Table 3 TUNABLE FACTORS TABLE

Tunable Factors	Value
Window length W	200 slots
Backoff factor A	$\{0.05, 0.25, 0.5\}$
Access Function $f(m)$	m^{-1}
Power control factor δ_1	2×10^{-4}
Power control factor δ_2	8 mW
DMR^H	3.5%
DMR^L	2.5%

FIGURES

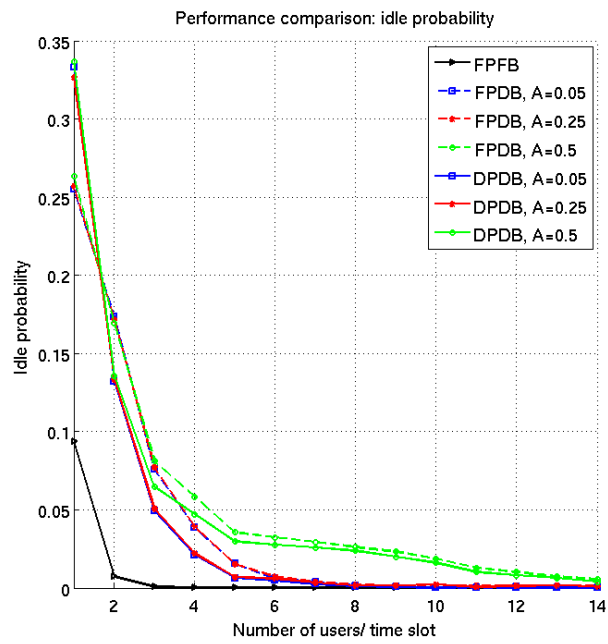


Fig. 1 Comparison of the average occurrence of idle slot per scheme. The dynamic scenario with $\mathcal{A} = 0.05$ is the closest to follow the chosen fixed one.

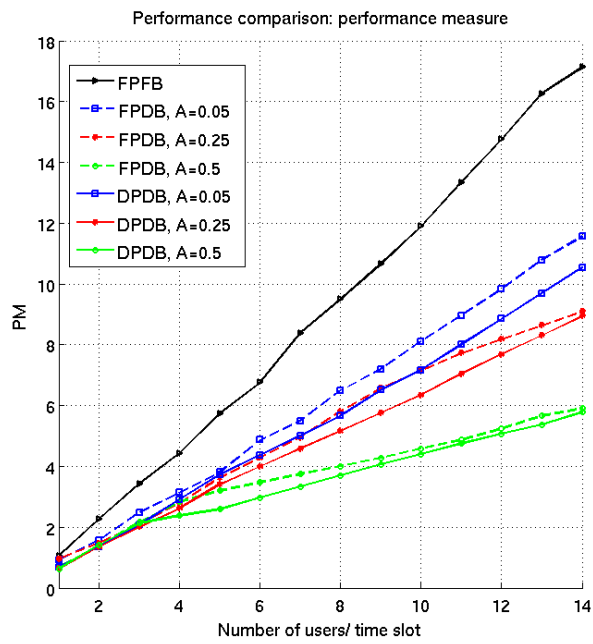


Fig. 2 Comparison of performance measure, equal to the chosen function V as $t \rightarrow \infty$. The measure improves with increasing idle probability bound \mathcal{A} . Furthermore, all DPDB schemes outperform the FPDB ones.

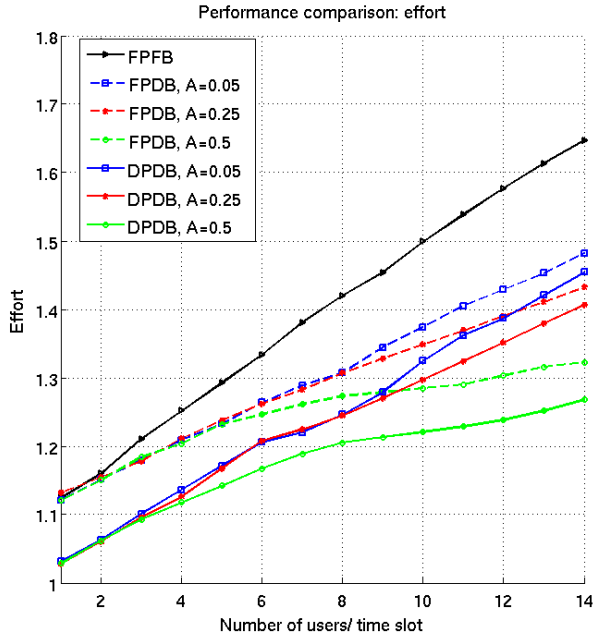
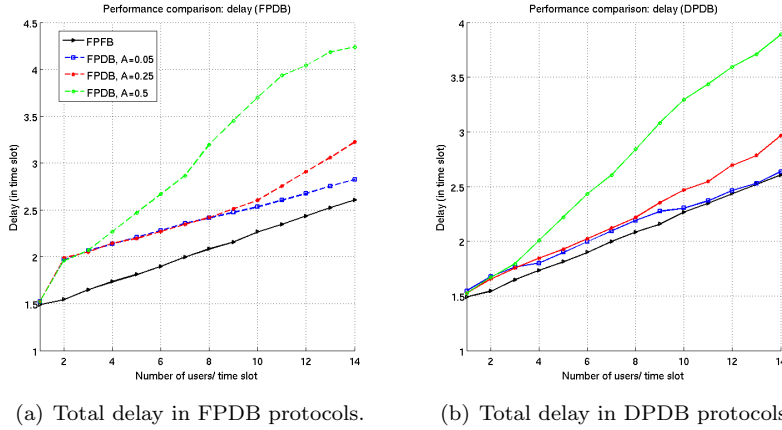


Fig. 3 Comparison of the average number of efforts until success. The behaviour of these curves follows closely the performance metric curves, due to the specific choice of the Lyapunov function V as sum of user states.



(a) Total delay in FPDB protocols.

(b) Total delay in DPDB protocols.

Fig. 4 Evaluation of total average delay up to success (including backoff slots) in the case of (a) FPDB protocols and (b) DPDB protocols. The higher the parameter \mathcal{A} , the higher the allowed delay. For $\mathcal{A} = 0.05$, the protocol delay approaches the one of the FPFB protocol. In general power control improves the delay.

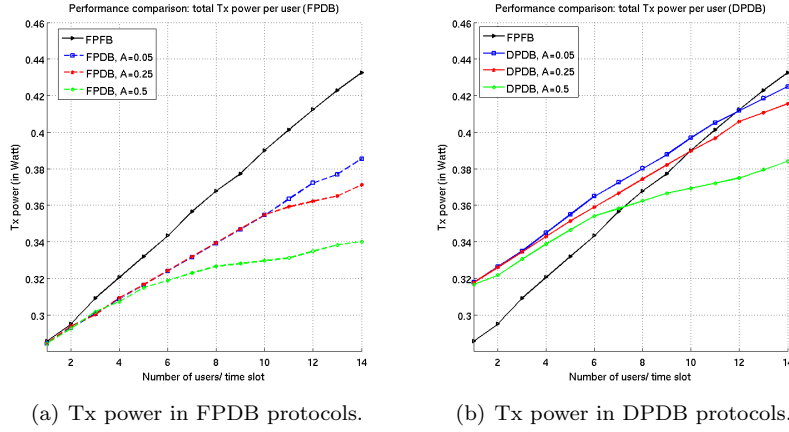


Fig. 5 Evaluation of average Tx Power consumption up to success in the case of (a) FPDB protocols and (b) DPDB protocols. In the case of FPDB, the consumed power is always lower than the FPFB case. Both cases exhibit benefits in Tx power.

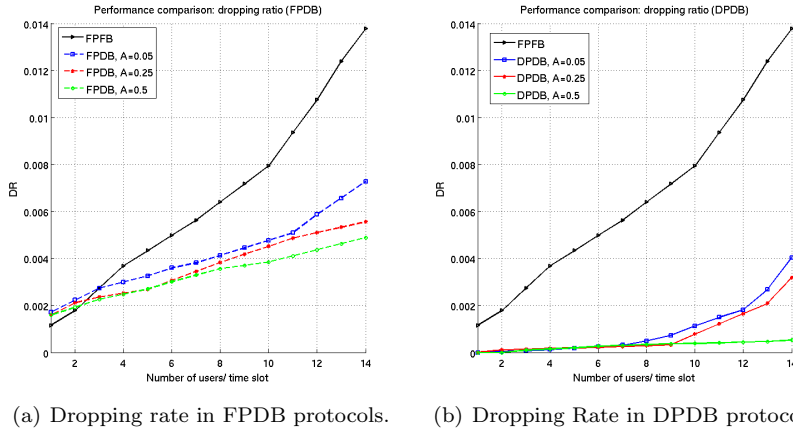
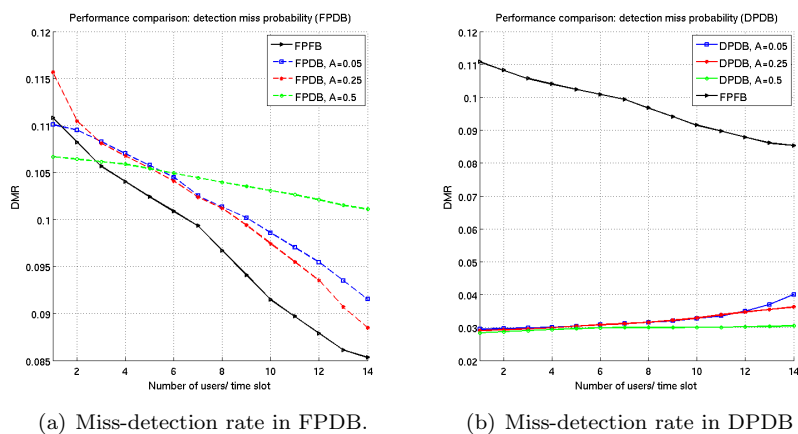


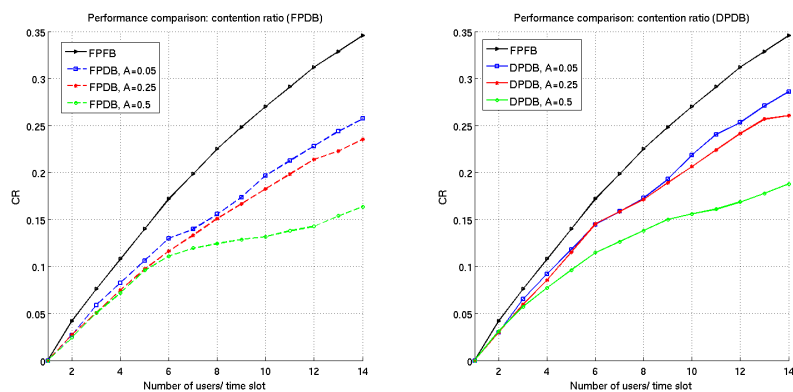
Fig. 6 Comparison of the average dropping rate (DR) in the case of (a) FPDB protocols and (b) DPDB protocols. The abrupt increase of the rate after a certain user number is an indicator that the system is not anymore stable for a further increase in the cell user number. Higher values of \mathcal{A} can increase the point when the instability appears, at the cost of delay. (For a single user, the dropping rate may be non-zero if the event of miss-detection occurs M consecutive times due to bad channel conditions and poor transmission power.)



(a) Miss-detection rate in FPDB.

(b) Miss-detection rate in DPDB

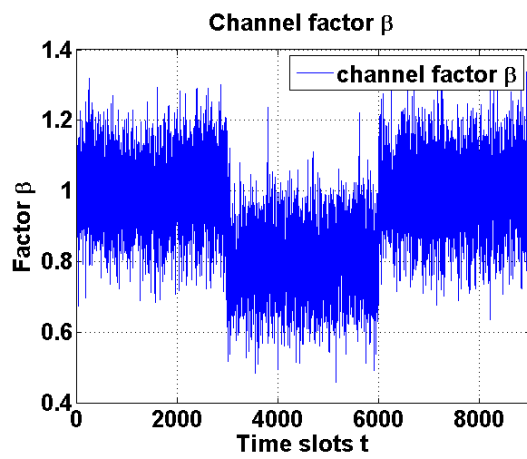
Fig. 7 Comparison of miss-detection rate DMR for the two protocols (a) FPDB and (b) DPDB. Benefits are evident only in the case (b) where the MIAD rule is applied.



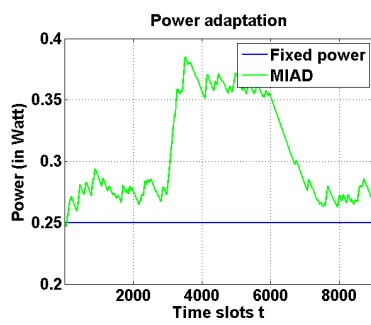
(a) Contention rate rate in FPDB.

(b) Contention rate in DPDB

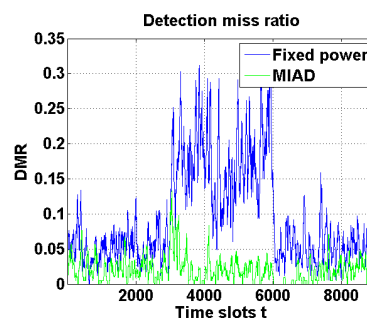
Fig. 8 Comparison of contention rate CR for the two protocols (a) FPDB and (b) DPDB. Both schemes exhibit improvements compared to the FPFB case, due to the backoff optimal choices. The case DPDB is slightly worse than the FPDB due to the fact that a larger number of packets are detected, so that the CR appears lower.



(a) Scenario with channel fluctuations and deep fades.

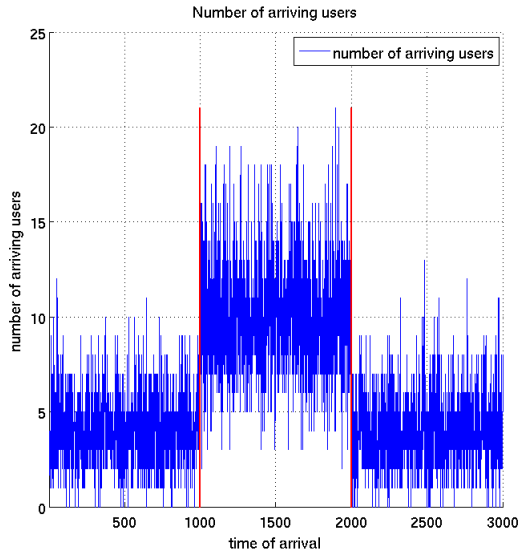


(b) Temporal adaptation of transmission power to a deep fade.

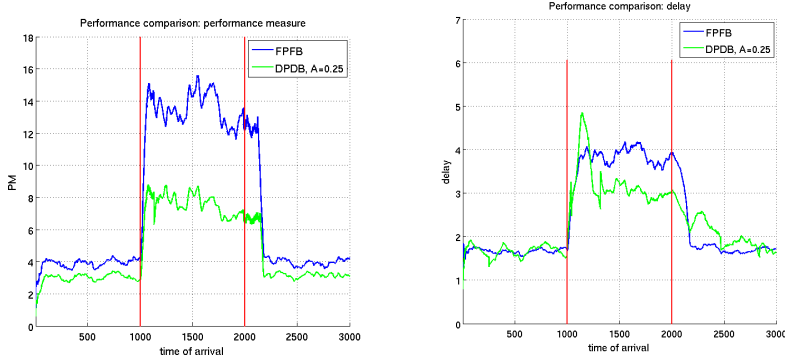


(c) Temporal variation of the DMR.

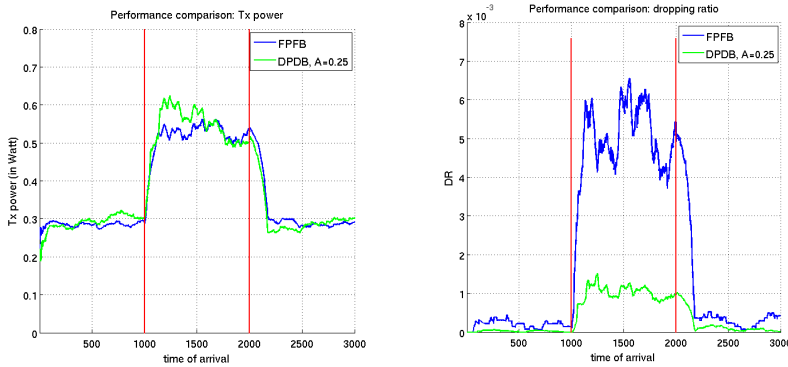
Fig. 9 Protocol adaptation with respect to power and DMR



(a) Scenario with load varying over time.



(b) Temporal evaluation of the performance measure for FPFB and DPDB. (c) Temporal evaluation of delay for FPFB and DPDB.



(d) Temporal evaluation of power consumption for FPFB and DPDB. (e) Temporal evaluation of dropping rate for FPFB and DPDB.

Fig. 10 Protocol adaptation over time when the traffic load varies from an average of 5 [users/sec] to an average of 10 [users/sec] and back. Value of idle parameter $\mathcal{A} = 0.25$ and chosen window size $W = 200$ slots. The benefits of the protocol over the fixed case are apparent for the delay and dropping rate, with almost the same power consumption. The DPDB case is definitely superior compared to the FPFB case regarding the performance measure in (b). A certain overshoot and delayed response in both (c) and (d) is due to the choice of large window size W and the power step Δp , which can be further optimally tuned to adapt to each scenario of expected traffic change.