

# Sintrack analysis for tracking components of musical signals

Bertrand David, Roland Badeau, Gael Richard

► **To cite this version:**

Bertrand David, Roland Badeau, Gael Richard. Sintrack analysis for tracking components of musical signals. Proc. of the Forum Acusticum, 2002, Séville, Spain. hal-00945285

**HAL Id: hal-00945285**

**<https://hal.inria.fr/hal-00945285>**

Submitted on 24 Mar 2014

**HAL** is a multi-disciplinary open access archive for the deposit and dissemination of scientific research documents, whether they are published or not. The documents may come from teaching and research institutions in France or abroad, or from public or private research centers.

L'archive ouverte pluridisciplinaire **HAL**, est destinée au dépôt et à la diffusion de documents scientifiques de niveau recherche, publiés ou non, émanant des établissements d'enseignement et de recherche français ou étrangers, des laboratoires publics ou privés.

# SINTRACK ANALYSIS FOR TRACKING COMPONENTS OF MUSICAL SIGNALS

PACS REFERENCE: 43.60.Gk

DAVID, Bertrand ; BADEAU, Roland ; RICHARD, Gaël

Ecole Nationale Supérieure des Télécommunications  
46, rue Barrault  
75634 Paris cedex 13  
France

Tel: (33 1) 45 81 71 02  
Fax: (33 1) 45 88 79 35  
E-mail: [bertrand.david@enst.fr](mailto:bertrand.david@enst.fr)

## ABSTRACT

Musical signals often present close frequencies producing beats and the classical Fourier Transform does not achieve a sufficient resolution to estimate these components separately with accuracy. This paper presents a spectral analysis technique for estimating and tracking the frequencies, damping factors and amplitudes of each component. SINTRACK associates a Matrix Pencil high resolution method with a LMS adaptive algorithm. It detects changes in the signal underlying model (as the changing number of sinusoids for example) and can indicate the time variations of parameters. Results are shown for a signal recorded from a guitar.

## 1 INTRODUCTION

A wide variety of musical sounds can be described schematically as a sum of harmonically related partials. However, the spectrum of a piano or a guitar is more complex. In some partials more than one elementary component is included whose close frequencies produce beats. These beats are known to be important features of the naturalness of a synthesized musical sound. They often result from the particular properties of vibrational systems: a minor lack of symmetry in a bell geometry leads to pairs of nondegenerate normal modes; the coupling between the strings and the bridge of a guitar is well described by a two dimensional mobility matrix, from which frequency doublets are derived [LAMBOURG93]; the multiple strings of a piano note are known to be slightly mistuned by excellent tuners in order to enhance the quality of the sound decay [WEINREICH77].

Under the assumption of linear behavior, the response of those free vibrating systems is a sum of exponentially damped sinusoids. The accurate estimation of these elementary components parameters is of great concern both in a synthesis context and in a mechanical study. The High Resolution (HR) methods have proved to be efficient in this purpose: J. Laroche [LAROCHE93] showed an application of the matrix pencil algorithm to various musical signals (piano and guitar) and the same technique has been successfully applied to estimate the radiation efficiency of a guitar [DAVID99]. Other applications include audio coding [BOYER02] and the propagation of mechanical waves in solid media [JEANNEAU98].

On the other hand, High Resolution techniques are complex and cannot be satisfactorily used for components tracking without modification. These methods are based on the assumption of a signal model whose parameters are taken constant with time. For example, they can not indicate the existence of a slow variation of the decay which could suggest a slight non linear behavior. Therefore, it is worthwhile to develop techniques allowing the tracking of the components at a lower complexity while keeping spectral resolution and accuracy. This constitutes the basic idea of SINTRACK. Our first attempt at applying SINTRACK to musical signals was made during the engineering school final work of M. Massabieaux [MASSABIEAUX00].

This paper first examines the principles of HR methods and the theoretical background of the SINTRACK algorithm. Then, simulation examples and a musical application will be presented.

## 2. THEORETICAL ASPECTS

SINTRACK [DUVAUT94] associates a HR technique (Matrix Pencil [HUA90]) to a low complexity adaptive algorithm (Least Mean Square or LMS). First, the Matrix-Pencil method is applied to obtain an initial estimation. Second, the components are tracked using the LMS procedure as long as the prediction error remains below a given threshold. When the error grows above the threshold, indicating that the model has become obsolete, Matrix-Pencil is applied again to reinitialize the frequency components estimates. Given that the complexity of the Matrix Pencil algorithm is  $O(N^3)$  and that the complexity of LMS is  $O(N)$ , the computational cost of SINTRACK is drastically reduced compared to Matrix Pencil alone if the components are well tracked. Also, it is important to note that SINTRACK can be used to detect model breaks (for example attacks) in a given signal. These breaks will correspond to frames where the LMS prediction error will abruptly grow.

### 2.1 High Resolution Principles

HR techniques rely on a precise signal model and are conventionally classified as parametric methods. This model represents the discrete signal  $x_n$  as a sum of complex exponentials:

$$x_n = \sum_{i=1}^M b_i z_i^n = \sum_{i=1}^M (A_i e^{j\phi_i}) \exp[( -\alpha_i + j2\pi f_i)n]$$

where  $A_i, \phi_i, f_i, \alpha_i$  respectively represent the initial amplitude, initial phase, frequency and damping factor of each component. The estimation of  $(f_i, \alpha_i)$  is therefore a non linear problem. Prony [PRONY1795] first demonstrated that this signal can be predicted by means of a polynomial whose roots are the  $z_i$ 's. Finding the coefficients of this polynomial is a linear problem. The estimation of  $A_i, \phi_i$  can be formulated as a linear least square problem if all other parameters are known.

### 2.2 Matrix Pencil

We first define two backward data matrices  $X_0$  and  $X_1$  using N samples of the signal  $x_n$  as follows:

$$X_0 = \begin{bmatrix} \mathbf{x}_0 & \mathbf{x}_1 & \cdots & \mathbf{x}_{p-1} \\ \mathbf{x}_1 & \mathbf{x}_2 & \cdots & \mathbf{x}_p \\ \vdots & \vdots & \vdots & \vdots \\ \mathbf{x}_{N-p-1} & \mathbf{x}_{N-p} & \cdots & \mathbf{x}_{N-2} \end{bmatrix}; \quad X_1 = \begin{bmatrix} \mathbf{x}_1 & \mathbf{x}_2 & \cdots & \mathbf{x}_p \\ \mathbf{x}_2 & \mathbf{x}_3 & \cdots & \mathbf{x}_{p+1} \\ \vdots & \vdots & \vdots & \vdots \\ \mathbf{x}_{N-p} & \mathbf{x}_{N-p+1} & \cdots & \mathbf{x}_{N-1} \end{bmatrix}$$

Matrix Pencil rely on the rank reducing property of the  $z_i$ 's for the pencil of matrices  $X_1 - zX_0$ . The  $z_i$ 's are then derived as the inverse of the eigenvalues of the square matrix  $X_1^+ X_0$ , where

$X_1^+$  denotes the order  $M$  truncated pseudo-inverse of the rank- $M$  matrix  $X_1$ .  $X_1^+$  is obtained using the Singular Value Decomposition (SVD) which is expressed as:

$$X_1 = U \Sigma V^H$$

where the subscript  $H$  denotes the conjugate transpose and where  $\Sigma$  has  $M$  non-zeros elements on the diagonal, sorted in decreasing order. Let  $U_M$  and  $V_M$  be the matrices built with the  $M$  first columns of  $U$  and  $V$  respectively.  $X_1^+$  is obtained by inverting the  $M$  non-zeros singular values in  $\Sigma$ . This can be written:

$$X_1^+ = V_M \Sigma^+ U_M^H$$

It should be noticed that when a white noise is added to the model, the matrix  $X_1$  becomes full-rank, all of its singular values being increased by the variance of the noise. Its  $M$  principal right and left eigenvectors remain unchanged. The Matrix Pencil method is then applied without any further modification. The  $M$  selected vectors in matrices  $U_M$  and  $V_M$  correspond to the  $M$  largest singular values, denoted as  $\lambda_i$ ,  $i = 1 \dots M$ . The values of the frequencies and damping factors are then derived as  $f_i = -\arg(\lambda_i)/(2\pi)$  and  $\alpha_i = \ln|\lambda_i|$

### 2.3 LMS For Tracking The Poles

The adaptive Least Mean Square algorithm is used to track the poles of the signal once they have been estimated with matrix pencil. The prediction coefficients in the backward direction are given in the vector  $\mathbf{b}_n$  and thus provide an estimation of  $x_n$  as a linear combination of his future:  $x_n = \mathbf{b}_n^T \mathbf{x}_{n+1} + e_n$ , where  $\mathbf{x}_{n+1} = [x_{n+1} \ x_{n+2} \ \dots \ x_{n+p}]^T$  and  $e_n$  is the prediction error. At initial time  $n=0$ , this vector is given by  $\mathbf{b}_0 = -V_M \Sigma^+ U_M^H [x_0 \ x_1 \ \dots \ x_{N-p-1}]^T$  and updated following the well-known relation  $\mathbf{b}_n = \mathbf{b}_{n-1} - \mu e_{n-1} \mathbf{x}_n$  where  $\mu$  is the adaptation step of the LMS. The poles of the signal are derived as the roots inverses of the polynomial  $p(z) = z^p + [z^{p-1} \ z^{p-2} \ \dots \ 1] \mathbf{b}_n$ .

### 2.4 Algorithm And Practical Choices

The SINTRACK algorithm can be separated in 2 steps:

1 *initialization*: matrix pencil is applied to find the initial values of the  $z$ 's and  $\mathbf{b}_0$

2 *tracking*:

- the roots of  $p(z)$  are extracted in order to estimate the updated poles,
- the corresponding complex amplitudes ( $A_i e^{j\phi_i}$ ) are estimated by minimizing the quadratic error between the real data and the estimates over the range of the  $p$  future observations,
- the prediction error is evaluated: if  $e(n)$  is above the threshold then the initialization step is rerun, else the tracking continues for the following frame.

We now address the problem of parameter tuning for Matrix Pencil and the LMS.

The number  $M$  of components is generally unknown. The results of the estimation are much affected if  $M$  is underestimated. A usual choice is to overestimate the value of  $M$ . The true value can be approached further regarding the fact that real poles lay outside the unit circle, when the others fall inside.

The pencil parameter  $p$  is also the prediction order of the polynomial  $p(z)$ . The variance of the estimates is known to be around its minimum for  $p=N/3$ . The choice of  $p$  is then the result of a trade-off between complexity and resolution since a higher resolution is achieved for a greater value of  $N$ . There is no simple rule to determine the minimum acceptable value of  $p$  for a given signal with given SNR characteristics. However, in order to separate a pair of beating frequencies, an appropriate choice for  $p$  is between 1/10 and 1/20 of the beat period in samples [LAROCHE93].

The adaptation step  $\mu$  of the LMS must be chosen and updated to be less than  $2/(pE_n^2)$  where

$$E_n^2 = \frac{1}{p-1} \sum_{k=0}^{p-1} |x_{n+k}|^2$$

This insures the convergence of the algorithm while taking into account the intrinsic non stationarity of the signal energy.

At last, the threshold can be chosen following two ways. Either an estimate of the noise variance  $\sigma^2$  is known and we can state it as  $3\sigma$  for example, or we can consider that the initialization step must occur when the prediction error is above a fraction of the maximal amplitude (typically situated between 1/10 and 1/2)

### 3. SIMULATIONS AND APPLICATION TO A PIANO PARTIAL

#### 3.1 Tracking Of A Single Component With Double Decay

This example aims at demonstrate the decay tracking capability of the algorithm. The synthetic signal is made of a single component whose frequency is  $0.1 \text{ samples}^{-1}$  and a unitary initial amplitude ( $A=1$ ). Its decay takes the values 0.001 and 0.02, one after the other. The onset of the component stands on discrete time  $n=200$  and a white gaussian complex noise of 0.001 standard deviation is added, which corresponds to an overall SNR of approximately 55dB. This resembles to the Decay-Release envelope of a musical sound.

The Figure 1 shows the results of the tracking for the frequencies  $f_i$  and the amplitude  $A_i$ , for analysis parameters  $N=80$ ,  $M=6$  and a  $3\sigma$  threshold. The figure does not show the estimation of the  $\alpha_i$ 's whose accuracy is very poor, considering the small value of  $N$ . However, they can be derived from the  $A_i$ 's tracking by a simple linear regression. The figure clearly shows the sudden growths of the prediction error at the onset-time and at the decay changing time. We can notice that the prediction error remains high in the regions before  $n=200$  and  $n=800$ , where model jumps occur in the analysis window.

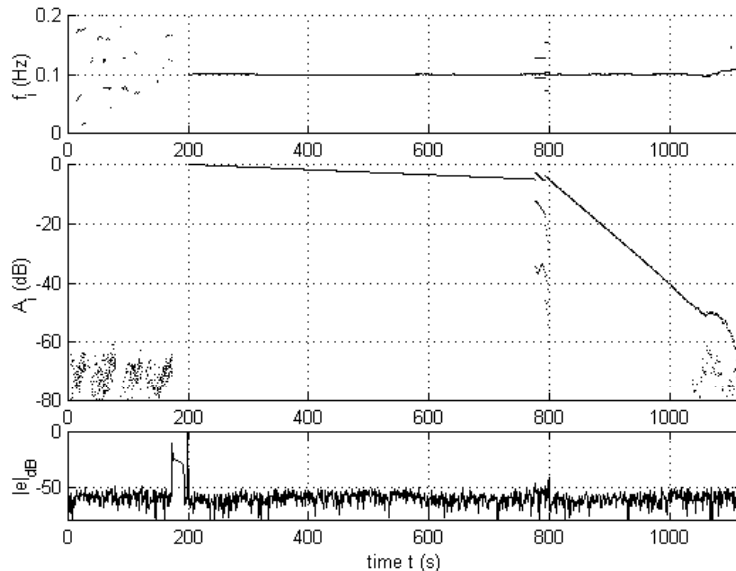
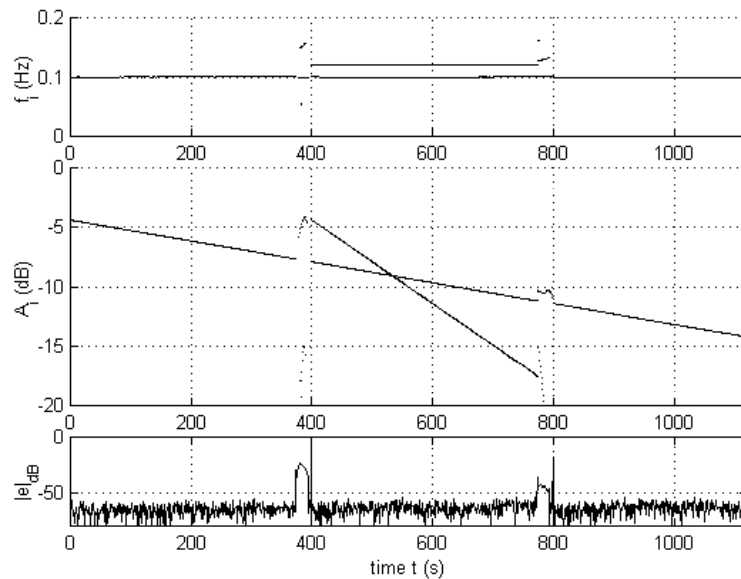


Figure 1: a single component with double decay

#### 3.2 Detection Of The Onsets Of Delayed Damped Sinusoids

This example shows the detection capabilities of SINTRACK when components appear and/or disappear. The signal is the sum of a complex exponential with parameters  $f=0.1$ ,  $\alpha=0.001$ ,  $A =$

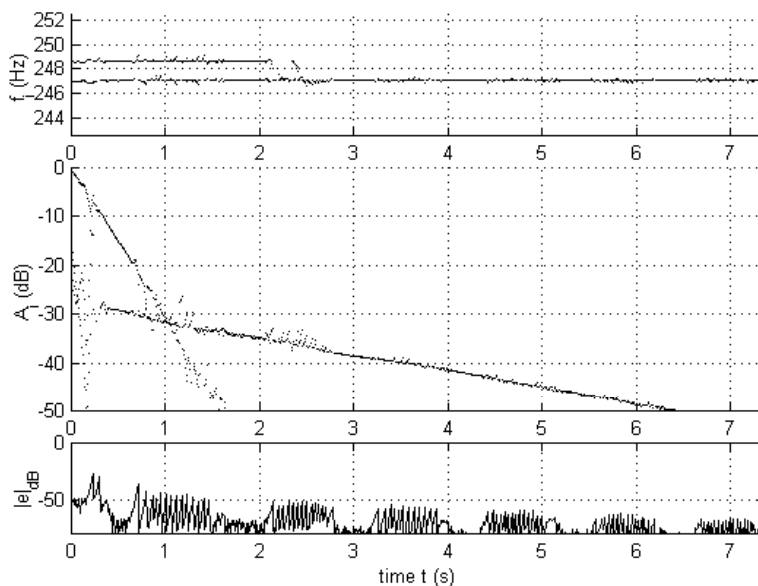
1 and a second one beginning at  $n=400$ , ending at  $n=800$  with parameters  $f=0.12$ ,  $\alpha=0.004$ ,  $A=1$ . The additive noise has a standard deviation  $\sigma=0.001$  (approximately 55dB SNR). The analysis parameters remain unchanged from the previous example. The results shown on figure 2 demonstrate both the accuracy of the estimation and the precision for detecting model jumps.



**Figure 2:** detection of the onset and the extinction of a sinusoid in presence of an other one

### 3.2 Application To A Guitar Partial

For this application, the E2 note of a classical guitar was recorded and sampled at 48kHz. A piezoelectric crystal was specially designed for that purpose and integrated in the saddle. As a result, the measured signal is proportional to the transverse force applied by the string to the bridge. A preprocessing step was needed both to enhance the resolution and to shorten the data. The signal was first filtered with a FIR Remez Filter, designed to isolate the 3<sup>rd</sup> harmonic (partial at 247.5Hz). The filtered signal was then demodulated and downsampled by a factor 384. The preprocessed signal was complex and 1700 samples long (7 seconds). The results are displayed using Hz and seconds for convenience. The analysis parameters were  $N=80$  (0.64s),  $M=6$  and the threshold was taken as 1/10 of the maximum amplitude.



**Figure 3:** results for the 247.5Hz partial, E2 string of a classical guitar

The results displayed on figure 3 clearly show two principal components, one with a high initial amplitude and short decay while the other has a much lower amplitude with a longer decay. This is consistent with the known properties of free vibrating strings coupled to a bridge: the horizontal and vertical polarizations of the vibration are coupled by the bridge which leads to frequency doublets. The vertical polarization excites transverse motions of the plate and thus corresponds to high initial level and shorter decay [JANSSON83].

These results demonstrate the validity of a complex exponential model for the components of a guitar tone. It also allows an accurate estimation of the parameters of these components. However, some drawbacks should be mentioned. As the saw-tooth behavior of the prediction error suggests, the threshold is often reached. Matrix pencil is therefore frequently applied which yields to a greater complexity. To reduce this phenomenon the adaptation step  $\mu$  could be diminished but at the cost of a less efficient tracking since the convergence of the LMS is slower.

#### 4. CONCLUSION AND FUTURE WORKS

SINTRACK is an efficient method to study and accurately estimate the musical signals whose spectrum is composed with possibly varying close frequency components. By associating a High resolution method with a tracking approach, SINTRACK has the potential to accurately locate abrupt changes in the signal content and therefore should represent a useful tool for signal onset (or transients) detection.

Future works include the study of the attack of musical tones and the estimation of the piano decays.

#### References

- [BOYER02] Boyer R., Essid S. and Moreau N. (2002). Non-stationary signal parametric modeling techniques with an application to low bitrate audio coding. *IEEE International Conference on Signal Processing*, August 2002.
- [DAVID99] David, B (1999). *Caractérisation acoustiques de structures vibrantes par mise en atmosphère raréfiée*. Phd Thesis, University of Paris VI.
- [DUVAUT94] Duvaut, P. (1994). *Traitement du signal*, Chap. 11, Hermes ed.
- [HUA90] Hua, Y and Sarkar T.K. (1990). Matrix pencil method for estimating parameters of exponentially damped/undamped sinusoids in noise. *IEEE Trans. Acoust., Speech, Signal Processing ASSP-38*, 814-824.
- [JANSSON83] Jansson, E. V. (1983). Acoustics for the guitar player. In *"Function, construction and quality of the guitar"* (E.V. Jansson ed.). Stockholm. Royal Swedish Academy of Music.
- [JEANNEAU98] Jeanneau, M., Mouyon P. and Pendaries C. (1998). Sintrack analysis, application to detection and estimation of flutter for flexible structures. *EUSIPCO 98*, pp 789-792.
- [LAMBOURG93] Lambourg, C and Chaigne, A. (1993). Measurements and modeling of the admittance matrix at bridge in guitars. In *SMAC*, Stockholm. Royal Swedish Academy of Music.
- [LAROCHE93] Laroche, J. (1993). The Use of the matrix pencil method for the spectrum analysis of musical signals. *Journal of the Acoustical Society of America* **94**(4), 1958-65.
- [MASSABIEAUX00] Massabieaux, M (2000). Estimation and tracking of the components of a musical signal (*in french*). Ecole Nationale Supérieure de l'Electronique et de ses Application. Report of the engineering school final work. *Unpublished*.
- [PRONY1795] Prony, R. (1795). Essai expérimental et analytique. *Anales de l'Ecole Polytechnique* **1**(2).
- [WEINREICH77] Weinreich, G. (1977). Coupled piano strings. *Journal of the Acoustical Society of America* **62**, 1474-1484.