



# Regression Analysis and Indoor Air Temperature Model of Greenhouse in Northern Dry and Cold Regions

Ting Zhao, Heru Xue

► **To cite this version:**

Ting Zhao, Heru Xue. Regression Analysis and Indoor Air Temperature Model of Greenhouse in Northern Dry and Cold Regions. Daoliang Li; Yande Liu; Yingyi Chen. 4th Conference on Computer and Computing Technologies in Agriculture (CCTA), Oct 2010, Nanchang, China. Springer, IFIP Advances in Information and Communication Technology, AICT-345 (Part II), pp.252-258, 2011, Computer and Computing Technologies in Agriculture IV. .

**HAL Id: hal-01562797**

**<https://hal.inria.fr/hal-01562797>**

Submitted on 17 Jul 2017

**HAL** is a multi-disciplinary open access archive for the deposit and dissemination of scientific research documents, whether they are published or not. The documents may come from teaching and research institutions in France or abroad, or from public or private research centers.

L'archive ouverte pluridisciplinaire **HAL**, est destinée au dépôt et à la diffusion de documents scientifiques de niveau recherche, publiés ou non, émanant des établissements d'enseignement et de recherche français ou étrangers, des laboratoires publics ou privés.



Distributed under a Creative Commons Attribution 4.0 International License

# Regression Analysis and Indoor Air Temperature Model of Greenhouse in Northern Dry and Cold Regions

Ting Zhao<sup>1</sup>, Heru Xue<sup>1</sup>

<sup>1</sup> College of computer & information Engineering, Inner Mongolia Agricultural University, Hohhot, Inner Mongolia, P. R. China

[E-mail: simadoudou@gmail.com](mailto:simadoudou@gmail.com)

**Abstract.** The indoor air temperature of greenhouse is an important parameter in environmental monitoring. Existing research on it has many, and the mathematical models have been made. But the obtained models do not apply to the northern areas features of dry and cold. On the basis of previous studies, the indoor air temperature model of greenhouse will be re-modeling by using the regression analysis method in this paper. Analysis each convection heat transfer coefficient of the model and re-established them. In the case of known the outdoor weather conditions, the solution of the indoor temperature will be implemented by using the computer programming. And the data of a period is selected randomly from the observational data to validate the model is feasible and applied.

**Key words:** Indoor air temperature model, Regression analysis method, Model parameters, Computer programming

## 1 Introduction

There are many advantages in China's light greenhouse, but the environmental control level of greenhouse is still lower. The artificial experience is still the main force, and theoretical and practical guidance is lacking. The indoor air temperature of greenhouse is an important parameter in environmental monitoring. Predecessors have done a lot of research on the prediction model of the indoor air temperature of greenhouse. But most studies have been done for the greenhouse in Beijing. [1, 2] And the obtained models do not apply to the northern areas features of dry and cold.

The prediction model of the indoor air temperature of greenhouse which can be used in the northern areas features of dry and cold can predict the daily change of temperature with time. According to forecasts, the staff can regulate the temperature actively, so that the crops can be provided the best growth temperatures.

The model to be build up on the basis of previous' work, and the indoor air temperature model of greenhouse will be re-modeling by using the regression analysis method. Analysis each convection heat transfer coefficient of the model and re-established them. The typical areas and typical greenhouse will be chosen for the study. And using the known conditions to validate the model is feasible and applied.

## 2 The indoor air temperature model of greenhouse

**Table 1.** Sign Description

emblem	description	unit	emblem	description
Q	Heat exchange	W	a	Indoor air temperature
V	Volume	m <sup>3</sup>	b	Rear wall
A	Area	m <sup>2</sup>	c	Crop canopy
T	Temperature	K	h	Heating
$Q^1$	Convection heat transfer energy	W	o	Outdoor air Temperature
$\rho c_p V$	Heat capacity	Kg/s	r	Rear slope
		J/K	s	Soil
			v	Ventilation
			pf	Covers

### 2.1 Heat balance differential equation of indoor air temperature

The heat balance differential equation used in this paper mainly by heat conduction differential equation. The model conditions have been simplified some. And according to the heat transfer principles and the law of conservation of mass and energy, the physical processes in the greenhouse have been considered comprehensively. The thermal change has much effect on thermal environment of greenhouse caused by heat change and moisture variation which come from solar radiation, heat convection, radiation heat transfer, heat exchange and natural ventilation. [3, 4]

$$\rho_a c_{pa} V_a \times \frac{dT_a}{dt_0} = Q_h - Q_b^1 - Q_r^1 - Q_s^1 - Q_{pf}^1 - Q_c^1 - Q_v \quad (1)$$

On the left of the equation is the heat change caused by the air temperature changes with time. And the right contains the energy of the indoor air temperature coming from hot-water heating-- $Q_h$ ; the energy of the indoor air temperature wasted by natural ventilation and infiltration heat loss-- $Q_v$ ; and the energy coming from natural-convection heat transfer-- $Q_r^1$ .

This is the derived formula of the indoor air temperature changes with time.

$$t_a = t_{a0} + \Delta t_a = t_{a0} + \frac{Q_h - Q_b^1 - Q_r^1 - Q_s^1 - Q_{pf}^1 - Q_c^1 - Q_v}{\rho_a c_{pa} V_a} \Delta t \quad (2)$$

Known by the Newton's law of cooling, the convection heat transfer energy from gas A to solid B can be shown as this.

$$Q_{A-B}^1 = A_{A-B} \alpha_{A-B} (T_A - T_B) \quad (3)$$

In this equation,  $A_{A-B}$  is the surface area of the heat transfer from A to B;  $\alpha_{A-B}$  is the coefficient of the heat transfer between A and B;  $T_A$  and  $T_B$  is the temperature of A and B.

The indoor air is heated mainly by the hot-water heating pipes. And the heat transfer between heating pipes and the indoor air is carried out by convection.

The energy of the indoor air temperature coming from hot-water heating is  $Q_h$ . It can be shown as this.

$$Q_h = A_h h_h (T_p - T_a) \quad (4)$$

In this equation,  $A_h$  is the surface area of the hot-water heating pipes;  $h_h$  is the coefficient of the heat transfer between the heating pipes and the indoor air;  $T_p$  is the temperature of the hot-water heating pipes;  $T_a$  is the indoor air temperature.

The energy of the indoor air temperature wasted by natural ventilation and infiltration heat loss is  $Q_v$ . It can be shown as this.

$$Q_v = \rho_a c_{pa} \Phi_v (T_a - T_o) \quad (5)$$

In this equation,  $\Phi_v$  is the air quantity of the indoor air;  $\rho_a c_{pa}$  is the specific heat volume of the indoor air;  $T_a$  is the indoor air temperature;  $T_o$  is the outdoor air temperature.

Through the equations of (2),(3),(4),and (5), the heat balance differential equation of indoor air temperature can be simplified as this.

$$\begin{aligned}
& \frac{(T_a - T_0) \rho_a c_{pa} V_a}{\Delta T} \\
& = A_h h_h (T_a - T_h) - A_b \alpha_{a-b} (T_a - T_b) - A_r \alpha_{a-r} (T_a - T_r) - A_s \alpha_{a-s} (T_a - T_s) \\
& - A_{pf} \alpha_{pf} (T_a - T_{pf}) - A_c \alpha_{a-c} (T_a - T_c) - \rho_a c_{pa} \Phi_v (T_a - T_o)
\end{aligned} \tag{6}$$

## 2.2 Heat convection coefficient-- $\alpha_i$

Heat convection is the heat transfer which happened on the liquid flows through the solid surface. In the greenhouse which has the small natural ventilation, rising or declining the indoor air temperature is mainly through the heat convection with the cover, the ground soil, plants and other heat transfer to achieve.

There are many essays about the heat convection in overseas. And the studies in this respect are also very mature. The arithmetic in these studies can be used in our country greenhouse. The heat convection coefficient can be shown as this. [5]

$$\alpha = h (T_i - T_j)^\beta \quad \beta = \frac{5}{4} \tag{7}$$

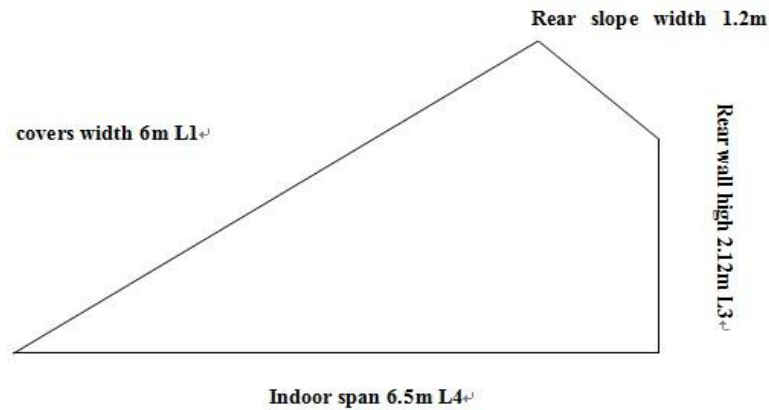
Based on such expression of the heat convection, each heat convection coefficient of the heat balance differential equations can be explained to  $h|T_i - T_j|^{0.25}$ .

Therefore, the problem of optimizing the equation is the problem of calculating the value of h.

## 3 Known conditions of this model

### 3.1 Structural parameters

To facilitate the calculation, the greenhouse structure can be approximately regarded as the following graphic which does not affect the results on the premise.



- The length of the greenhouse  $L_5=50(\text{m})$
- Leaf area index of the indoor crops  $La=0.3$
- The area of the covers  $L_1*L_5$
- The area of the ground  $L_4*L_5$
- The area of the rear slope  $L_2*L_5$
- The area of the rear wall  $L_3*L_5$
- The area of the crop canopy  $L_4*L_5*La$
- The volume of the indoor air  $V=506$
- The specific heat volume of the indoor air  $\rho_a c_{pa} = 1185; \text{kJ}/(\text{kg} \cdot ^\circ\text{C})$
- The temperature of the heating pipes during the day  $T=60+273; (\text{K})$
- The area of the heating pipes is  $9 \text{ m}^2$
- The coefficient of the heat transfer between the heating pipes and the indoor air  $1.95 * (T_{\text{空气}} - T_{\text{管内水}})^{0.39}$
- The air quantity of the indoor air  $\Phi = 0.001 * V / 3600$

### 3.2 Known conditions (Temperature indicators)

- 1) The 24-hour predicted values come from the weather forecast. They include the outdoor air temperature, the outdoor humidity, the wind velocity, the wind direction and the ultraviolet intensity.
- 2) Each average of the data calculated by hour is obtained. And the data of the cover temperature, the soil temperature, the rear wall temperature, the rear slope temperature, the crop canopy temperature and indoor air temperature is detected by the greenhouse monitoring system.

#### 4 Model validation

Experimental data is the observed data which can stand for the northern areas features of dry and cold. Use nonlinear regression analysis to optimize the parameters which comes from this heat balance differential equation of indoor air temperature. Nonlinear regression analysis is using least square method to estimate the parameters of non-linear model. Formula six is used to the regression equation of non-linear model. The starting value of the parameter  $h$  chose the empirical value 1.25. The sample data chose the data from November and December of 2009 and January and February of 2010. Other required temperature used the observed data. Each heat transfer coefficient of the model was re-established by using SAS software.

November 23 to 30, 2009 and January 1 to 6, 2010 is the tested date. And the forecasting module of the indoor air temperature has been verified by using these data. The two pictures below are the comparison diagram of predicted values and measured values using MATLAB subroutine to output.

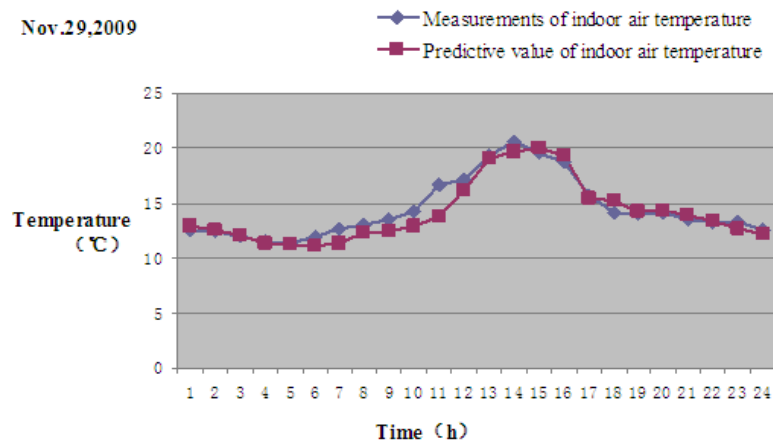


Fig. 1. The test and prediction data inside air temperature of the solar greenhouse



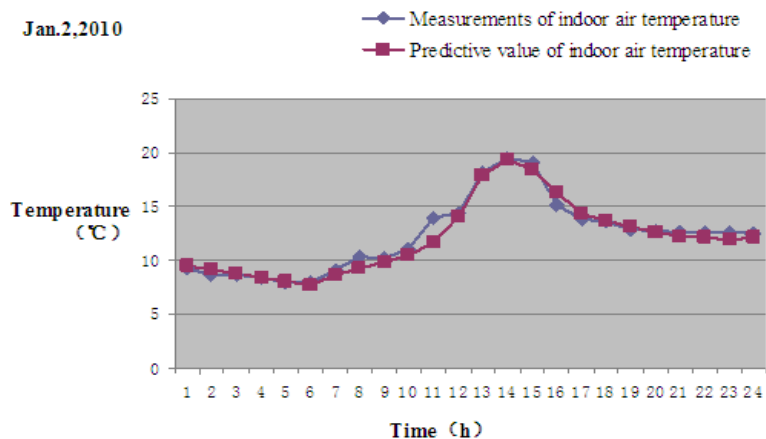


Fig. 2. The test and prediction data inside air temperature of the solar greenhouse

Table 2. The test and prediction data indoor air temperature of the greenhouse Jan.2,2010

	0	1	2	3	4	5	6	7
Predictive value	9.5	9.1	8.8	8.4	8.1	7.7	8.7	9.3
Measurements	9.3	8.7	8.6	8.4	7.9	7.9	9.1	10.3
	8	9	10	11	12	13	14	15
Predictive value	9.8	10.2	11.1	13.6	16.9	19.3	18.4	16.4
Measurements	10.8	12.2	13.9	14.4	18.2	19.5	19.1	15.2
	16	17	18	19	20	21	22	23
Predictive value	14.3	13.7	13.1	12.6	12.3	12.1	11.9	12.1
Measurements	13.8	13.6	12.9	12.7	12.6	12.6	12.6	12.5

#### 4.1 Interpretation of result

Validation data used the data of the weather including sunny, cloudy and cloudy. Diagram one and diagram two shows that the variation trend with time of predicted values and measured values is consistent. And the temperature contrast between predicted values and measured values is small. The average relative error is less than 10%. Therefore, the simulation results which calculated by the mathematical model of are reliable.

The two diagrams also show that the maximum between predicted values and measured values present to 9 o'clock and 10 o'clock after lifting up the quilt used to

keep warm. Because the solar radiation light into the indoor, the indoor air temperature shoot up. But this prediction model cannot predict it. So this is the model should be improved.

## 5 Conclusion

The rebuilding heat transfer coefficients apply to the northern areas features of dry and cold. So the prediction model of indoor air temperature is feasible and applied. But the values predicted are not good after lifting up the quilt. And the problem will be studied next.

## References

1. Sun Fugui, "Simulation and Analysis of Direct Light Environment in Typical Greenhouse in Beijing-- Light Simulation and Analysis Facility Agriculture Research 4"[J], *Agricultural Engineering*,1993,9(2):45-51.
2. Liu Hong,Gou Wenli,Li Huijun, "Light Environment Simulation and Analysis of Greenhouse in Beijing"[J], *Journal of Applied Meteorology*,2008,19(3):350-355.
3. Li Wei, Dong Renjie, Tang Chuzhou, Zhang Shumin, "Theoretical Model of Thermal Environment in SolarPlastic Greenhouses with One-Slope" [J], *Transactions of the CSAE*, 1997, 5(3): 160-163.
4. Chen Qingyun,Wang Zhengfu, "Dynamic Simulation of Thermal Environment in Solar Greenhouse"[J],1996,1(1):67-72.
5. Li Xiaofang, " Mathematical Simulation and Structural Optimization of Greenhouse Thermal Environment"[C], *China Agricultural University*,2005.
6. Meng Lili, "Thermal Environment Model in Chinese Solar Greenhouse Based on VB and MATLAB and Structure Optimization"[c], *Chinese Academy of Agricultural Sciences*,2008.
7. Wu Chunyan,Zhao Xinping,Guo Liwen, " Simulation and Analysis of Greenhouse Crop Thermal Environment"[J],*Agricultural Engineering*,2007,23(4):190-195.
8. Xin Bensheng,Qiao Xiaojun,Teng Guanghui, " Construction of Greenhouse Environmental Prediction Model"[J], *Agricultural Research*,2006,4(2):96-100.
9. Wang Guiying,Kang Guobin, "egression and Analysis of Greenhouse Environment"[J], *Beijing Agricultural College*,1994,9(2):75-84.
10. Rachel Joanna Catharina van Ooteghem .Optimal Control Design for a Solar Greenhouse[M].CIP gegevens Koninklijke Bibliotheek,Den Haag, 2007 .
11. O. Korner,H. Challa and R.J.C.van Ooteghem. Crop based climate regimes for energy saving in greenhouse cultivation[D]. Wageningen, The Netherlands: Wageningen University,2003.