

White noise-based stochastic calculus with respect to multifractional Brownian motion

Joachim Lebovits, Jacques Lévy Véhel

► **To cite this version:**

Joachim Lebovits, Jacques Lévy Véhel. White noise-based stochastic calculus with respect to multifractional Brownian motion. *Stochastics An International Journal of Probability and Stochastic Processes*, Taylor

Francis, 2014, 86 (1), pp.87-124. <inria-00580196>

HAL Id: inria-00580196

<https://hal.inria.fr/inria-00580196>

Submitted on 27 Mar 2011

HAL is a multi-disciplinary open access archive for the deposit and dissemination of scientific research documents, whether they are published or not. The documents may come from teaching and research institutions in France or abroad, or from public or private research centers.

L'archive ouverte pluridisciplinaire **HAL**, est destinée au dépôt et à la diffusion de documents scientifiques de niveau recherche, publiés ou non, émanant des établissements d'enseignement et de recherche français ou étrangers, des laboratoires publics ou privés.

White Noise-based Stochastic Calculus with respect to multifractional Brownian motion

Joachim LÉBOVITS *[§]

Jacques LÉVY-VÉHEL *

March 28, 2011

Abstract

Stochastic calculus with respect to fractional Brownian motion (fBm) has attracted a lot of interest in recent years, motivated in particular by applications in finance and Internet traffic modeling. Multifractional Brownian motion (mBm) is a Gaussian extension of fBm that allows to control the pointwise regularity of the paths of the process and to decouple it from its long range dependence properties. This generalization is obtained by replacing the constant Hurst parameter H of fBm by a function $h(t)$. Multifractional Brownian motion has proved useful in many applications, including the ones just mentioned.

In this work we extend to mBm the construction of a stochastic integral with respect to fBm. This stochastic integral is based on white noise theory, as originally proposed in [15], [6], [4] and in [5]. In that view, a multifractional white noise is defined, which allows to integrate with respect to mBm a large class of stochastic processes using Wick products. Itô formulas (both for tempered distributions and for functions with sub-exponential growth) are given, along with a Tanaka Formula. The cases of two specific functions h which give notable Itô formulas are presented.

Keywords: multifractional Brownian motion, Gaussian processes, White Noise Theory, S-Transform, Wick-Itô integral, Itô formula, Tanaka formula, Stochastic differential equations.

*I.N.R.I.A. Saclay, Regularity team: jolebovits@gmail.com and jacques.levy-vehel@inria.fr.

[§]Laboratoire de Probabilités et Modèles Aléatoires, C.N.R.S (UMR 7599), Université Pierre et Marie Curie (Paris VI), case 188, 4, pl. Jussieu, F-75252 Paris Cedex 5, France.

Contents

1	Background and Motivations	2
2	White noise theory	4
2.1	White noise measure	4
2.2	Properties of Hermite functions and space $\mathcal{S}'(\mathbb{R})$	5
2.3	Space of Hida distributions	6
2.4	S-transform and Wick product	8
3	The operators M_H and their derivatives	10
3.1	Study of M_H	10
3.2	Study of $\frac{\partial M_H}{\partial H}$	13
4	Wiener integral with respect to mBm on \mathbb{R}	14
4.1	Wiener integral with respect to fBm	14
4.2	Wiener integral with respect to mBm	15
5	Stochastic integral with respect to mBm	16
5.1	Fractional White Noise	16
5.2	Multifractional White Noise	17
5.3	Generalized functionals of mBm	22
5.4	S-Transform of mBm and multifractional white noise	23
5.5	The multifractional Wick-Itô integral	23
5.6	Multifractional Wick-Itô integral of deterministic elements versus Wiener integral with respect to mBm	26
6	Itô Formulas	29
6.1	Itô Formula for generalized functionals of mBm on an interval $[a, b]$ with $0 < a < b$	29
6.2	Itô Formula in (L^2)	31
6.2.1	Itô Formula for certain generalized functionals of mBm on an interval	31
6.2.2	Itô Formula in (L^2) for $C^{1,2}$ functions with sub-exponential growth	33
7	Tanaka formula and examples	35
7.1	Tanaka formula	35
7.2	Itô formula for functions h such that $\frac{d}{dt}[R_h(t, t)] = 0$	36
7.3	Itô formula for functions h such that $\frac{d}{dt}[R_h(t, t)] = 1$	37
8	Conclusion and future work	38
9	Acknowledgments	38
A	Bochner integral	38
B	Proof of proposition 4.2	39

1 Background and Motivations

Fractional Brownian motion (fBm) [26, 31] is a centered Gaussian process with features that make it a useful model in various applications such as financial and teletraffic modeling, image analysis and synthesis, geophysics and more. These features include self-similarity, long range dependence and the ability to match any prescribed constant local regularity. Fractional Brownian motion depends on a parameter, usually denoted H and called the Hurst exponent, that belongs to $(0, 1)$. Its covariance function R_H reads:

$$R_H(t, s) := \frac{\gamma_H}{2} (|t|^{2H} + |s|^{2H} - |t - s|^{2H}), \quad (1.1)$$

where γ_H is a positive constant. A normalized fBm is one for which $\gamma_H = 1$. Obviously, when $H = \frac{1}{2}$, fBm reduces to standard Brownian motion.

A useful representation of fBm $B^{(H)}$ of exponent H is the so-called harmonizable one:

$$B^{(H)}(t) = \frac{1}{c_H} \int_{\mathbb{R}} \frac{e^{itu} - 1}{|u|^{H+1/2}} \widetilde{W}(du), \quad (1.2)$$

where $c_x := \left(\frac{2 \cos(\pi x) \Gamma(2-2x)}{x(1-2x)} \right)^{\frac{1}{2}} = \left(\frac{2\pi}{\Gamma(2x+1) \sin(\pi x)} \right)^{\frac{1}{2}}$ for x in $(0, 1)$ and \widetilde{W} denotes the complex-valued Gaussian measure which can be associated in a unique way to W , an independently scattered standard Gaussian measure on \mathbb{R} (see [36] p.203-204 and [35] p.325-326 for more information on the meaning of $\int_{\mathbb{R}} f(u) \widetilde{W}(du)$ for a complex-valued function f). From (1.1) and Gaussianity, it is not hard to prove that fBm is H -self-similar.

The fact that most of the properties of fBm are governed by the single number H restricts its application in some situations. Let us give two examples. The long term correlations of the increments of fBm decay as $k^{(2H-2)}$, where k is the lag, resulting in long range dependence when $H > 1/2$ and anti-persistent behavior when $H < 1/2$. Also, almost surely, for each t , its pointwise Hölder exponent is equal to H . Since H rules both ends of the Fourier spectrum, *i.e.* the high frequencies related to the Hölder regularity and the low frequencies related to the long term dependence structure, it is not possible to have at the same time *e.g.* a very irregular local behavior (implying H close to 0) and long range dependence (implying $H > 1/2$). As a consequence, fBm is not adapted to model phenomena which display both these features, such as Internet traffic or certain highly textured images with strong global organization. Another example is in the field of image synthesis: fBm has frequently been used for generating artificial mountains. Such a modeling assumes that the regularity of the mountain is everywhere the same. This is not realistic, since it does not take into account erosion or other meteorological phenomena which smooth some parts of mountains more than others.

Multifractional Brownian motion (mBm) [33, 3] was introduced to overcome these limitations. The basic idea is to replace in (1.2) the real H by a function $h(t)$. More precisely, we will use the following definition of mBm:

Definition 1.1 (Multifractional Brownian motion). *Let $h : \mathbb{R} \rightarrow (0, 1)$ be a continuous function and $\alpha : (0, 1) \rightarrow \mathbb{R}$ be a C^1 function. A multifractional Brownian motion with functional parameters h and α is defined as:*

$$B^{(h,\alpha)}(t) = \alpha(h(t)) \int_{\mathbb{R}} \frac{e^{itu} - 1}{|u|^{h(t)+1/2}} \widetilde{W}(du). \quad (1.3)$$

Its covariance function reads [2]:

$$R_{(h,\alpha)}(t, s) = \alpha(h(t)) \alpha(h(s)) c_{h_{t,s}}^2 \left[\frac{1}{2} (|t|^{2h_{t,s}} + |s|^{2h_{t,s}} - |t-s|^{2h_{t,s}}) \right], \quad (1.4)$$

where $h_{t,s} := \frac{h(t)+h(s)}{2}$ and c_x has been defined in (1.2).

It is easy to check that mBm is a zero mean Gaussian process, the increments of which are in general neither independent nor stationary.

For T in \mathbb{R}_+^* , we will again call (h, α) -multifractional Brownian motion on $[0, T]$ the centered Gaussian process whose covariance function is equal to $R_{(h,\alpha)}$ on $[0, T] \times [0, T]$.

When $\alpha = \alpha_c : x \mapsto \frac{1}{c_x}$, we get that:

$$R_{(h,\alpha_c)}(t, s) = \frac{c_{h_{t,s}}^2}{c_{(h(t))}c_{(h(s))}} \left[\frac{1}{2} (|t|^{2h_{t,s}} + |s|^{2h_{t,s}} - |t-s|^{2h_{t,s}}) \right]. \quad (1.5)$$

As a consequence, if h is the constant function equal to the real H , then $B^{(H,\alpha_c)}$ is a normalized fBm. For this reason, we will call $B^{(h,\alpha_c)}$ a normalized mBm. Since in the sequel we will consider only normalized mBm, we simplify the notation and write from now on $B^{(h)}$ for $B^{(h,\alpha_c)}$ and R_h for $R_{(h,\alpha_c)}$.

One can show [18, 19] that the pointwise Hölder exponent at any point t of $B^{(h)}$ is almost surely equal to $h(t) \wedge \beta_h(t)$, where $\beta_h(t)$ is the pointwise Hölder exponent of h at t . In addition, the increments of mBm display long range dependence for all non-constant $h(t)$ (the notion of long range dependence must be

re-defined carefully for non-stationary increments, see [2]). Finally, at least when h is C^1 , for all $u \in \mathbb{R}$, mBm locally "looks like" fBm with exponent $h(u)$ in the neighbourhood of u in the following sense [33]:

$$\lim_{r \rightarrow 0_+} \frac{B^{(h)}(u + rt) - B^{(h)}(u)}{r^{h(u)}} = B^{(h(u))}(t), \quad (1.6)$$

where the convergence holds in law. These properties show that mBm is a more versatile model than fBm: in particular, it is able to mimic in a more faithful way local properties of financial records, Internet traffic and natural landscapes [7, 30, 14] by matching their local regularity. This is important *e.g.* for purposes of detection or real-time control. The price to pay is of course that one has to deal with the added complexity brought by having a functional parameter instead of a single number.

Because of applications, in particular in finance and telecommunications, it has been an important objective in recent years to define a stochastic calculus with respect to fBm. This was not a trivial matter, as fBm is not a semi-martingale for $H \neq \frac{1}{2}$. Several approaches have been proposed, based mainly on Malliavin calculus [12, 1, 17], pathwise approaches and rough paths ([39, 11, 16] and references therein), and white noise theory [15, 6, 5]. Since mBm seems to be a more flexible, albeit more complex, model than fBm, it seems desirable to extend the stochastic calculus defined for fBm to it. This is the aim of the current work. In that view, we will use a white noise approach, as it offers several advantages in our frame. The main task is to define a *multifractional white noise* as a Hida stochastic distribution, which generalizes the fractional white noise of, *e.g.*, [15, 6]. For that purpose, we use the properties of the Gaussian field $(B^{(H)}(t))_{(t,H) \in \mathbb{R} \times (0,1)}$. In particular, it is a crucial fact for us that the function $H \mapsto (B^{(H)}(t))$ is almost surely C^∞ . This entails that multifractional white noise behaves essentially as fractional white noise, plus a smooth term. We obtain an Ito formula that reads:

$$f(T, B^{(h)}(T)) = f(0, 0) + \int_0^T \frac{\partial f}{\partial t}(t, B^{(h)}(t)) dt + \int_0^T \frac{\partial f}{\partial x}(t, B^{(h)}(t)) dB^{(h)}(t) + \frac{1}{2} \int_0^T \left(\frac{d}{dt}[R_h(t, t)] \right) \frac{\partial^2 f}{\partial x^2}(t, B^{(h)}(t)) dt,$$

where the meaning of the different terms will be explained below.

The remaining of this paper is organized as follows. In section 2, we recall basic facts about white noise theory. We study a family of operators, noted $(M_H)_{H \in (0,1)}$, which are instrumental for constructing the stochastic integral with respect to mBm in section 3. Section 4 defines the Wiener integral with respect to mBm. We build up a stochastic integral with respect to mBm in section 5. Various instances of Ito formula are proved in section 6. Finally, section 7 provides a Tanaka formula, along with the study of two particular h functions that give notable results. Readers familiar with white noise theory may skip the next section.

2 White noise theory

We recall in this section the standard set-up for classical white-noise theory. We refer *e.g.* to [27, 21] for more details.

2.1 White noise measure

Let $\mathcal{S}(\mathbb{R}) := \{f \in C^\infty(\mathbb{R}) : \forall (p, q) \in \mathbb{N}^2, \lim_{|x| \rightarrow +\infty} |x^p f^{(q)}(x)| = 0\}$ be the Schwartz space. A family of functions $(f_n)_{n \in \mathbb{N}}$ of $(\mathcal{S}(\mathbb{R}))^{\mathbb{N}}$ is said to converge to 0 as n tends to $+\infty$ if for all (p, q) in \mathbb{N}^2 we have $\lim_{n \rightarrow +\infty} \sup_{x \in \mathbb{R}} |x^p f_n^{(q)}(x)| = 0$. The topology hence given on $\mathcal{S}(\mathbb{R})$ is called the usual topology. Let $\mathcal{S}'(\mathbb{R})$ denote the space of tempered distributions, which is the dual space of $\mathcal{S}(\mathbb{R})$. The Fourier transform of a function f which belongs to $L^1(\mathbb{R}) \cup L^2(\mathbb{R})$ will be denoted \widehat{f} or $\mathcal{F}(f)$:

$$\mathcal{F}(f)(\xi) := \widehat{f}(\xi) := \int_{\mathbb{R}} e^{-ix\xi} f(x) dx, \quad \xi \in \mathbb{R}. \quad (2.1)$$

Define the probability space as $\Omega := \mathcal{S}'(\mathbb{R})$ and let $\mathcal{F} := \mathcal{B}(\mathcal{S}'(\mathbb{R}))$ be the σ -algebra of Borel sets. The Bochner-Minlos theorem ensures that there exists a unique probability measure on Ω , denoted μ , such that:

$$\int_{\mathcal{S}'(\mathbb{R})} e^{i\langle \omega, f \rangle} \mu(d\omega) = e^{-\frac{1}{2}\|f\|_{L^2(\mathbb{R})}^2}, \quad \forall f \in \mathcal{S}(\mathbb{R}), \quad (2.2)$$

where $\langle \omega, f \rangle$ is by definition $\omega(f)$, *i.e.* the action of the distribution ω on the function f . For f in $\mathcal{S}(\mathbb{R})$ the map, noted $\langle \cdot, f \rangle$, from Ω to \mathbb{R} defined by $\langle \cdot, f \rangle(\omega) = \langle \omega, f \rangle$ is thus a centered Gaussian random variable with variance equal to $\|f\|_{L^2(\mathbb{R})}^2$ under the probability measure μ , which is called the *white-noise probability measure*. In other words,

$$\mathbb{E}[\langle \cdot, f \rangle] = 0, \quad \mathbb{E}[\langle \cdot, f \rangle^2] = \|f\|_{L^2(\mathbb{R})}^2,$$

for all f in $\mathcal{S}(\mathbb{R})$. Besides, for a measurable function F , from $\mathcal{S}'(\mathbb{R})$ to \mathbb{R} , the expectation of F with respect to μ is defined, when it exists, by $E[F] := E_\mu[F] := \int_\Omega F(\omega) \mu(d\omega)$. Equality (2.2) entails that the map ζ defined on $\mathcal{S}(\mathbb{R})$ by

$$\begin{aligned} \zeta : (\mathcal{S}(\mathbb{R}), \langle \cdot, \cdot \rangle_{L^2(\mathbb{R})}) &\rightarrow (L^2(\Omega, \mathcal{F}, \mu), \langle \cdot, \cdot \rangle_{(L^2(\Omega, \mathcal{F}, \mu))}) \\ f &\mapsto \zeta(f) := \langle \cdot, f \rangle \end{aligned} \quad (2.3)$$

is an isometry. Thus, it extends to $L^2(\mathbb{R})$ and we still note ζ this extension. For an arbitrary f in $L^2(\mathbb{R})$, we then have $\langle \cdot, f \rangle := \lim_{n \rightarrow +\infty} \langle \cdot, f_n \rangle$ where the convergence takes place in $L^2(\Omega, \mathcal{F}, \mu)$ and where $(f_n)_{n \in \mathbb{N}}$ is a sequence of functions which belongs to $\mathcal{S}(\mathbb{R})$ and converges to f in $L^2(\mathbb{R})$. In particular, define for all t in \mathbb{R} , the indicator function $\mathbb{1}_{[0,t]}$ by

$$\mathbb{1}_{[0,t]}(s) = \begin{cases} 1 & \text{if } 0 \leq s \leq t, \\ -1 & \text{if } t \leq s \leq 0 \text{ except if } t = s = 0 \\ 0 & \text{otherwise,} \end{cases}$$

Then the process $(\widetilde{B}_t)_{t \in \mathbb{R}}$, defined for $t \in \mathbb{R}$, on Ω by:

$$\widetilde{B}_t(\omega) := \widetilde{B}(t, \omega) := \langle \omega, \mathbb{1}_{[0,t]} \rangle \quad (2.4)$$

is a standard Brownian motion with respect to μ . It then admits a continuous version which will be denoted B . Thanks to (2.4) we see that, for all functions f in $L^2(\mathbb{R})$,

$$I_1(f)(\omega) = \langle \omega, f \rangle = \int_{\mathbb{R}} f(s) dB_s(\omega) \quad \mu - \text{a.s.} \quad (2.5)$$

2.2 Properties of Hermite functions and space $\mathcal{S}'(\mathbb{R})$

For every n in \mathbb{N} , define

$$h_n(x) := (-1)^n e^{x^2} \frac{d^n}{dx^n} (e^{-x^2}) \quad \text{the } n^{\text{th}} \text{ Hermite polynomial} \quad (2.6)$$

and

$$e_n(x) := \pi^{-1/4} (2^n n!)^{-1/2} e^{-x^2/2} h_n(x) \quad \text{the } n^{\text{th}} \text{ Hermite function} \quad (2.7)$$

We will need the following properties of the Hermite functions:

Theorem 2.1. *1. The family $(e_k)_{k \in \mathbb{N}}$ belongs to $(\mathcal{S}'(\mathbb{R}))^{\mathbb{N}}$ and forms an orthonormal basis of $L^2(\mathbb{R})$ endowed with its usual inner product.*

2. There exists a real constant \widetilde{C} such that, for every k in \mathbb{N} , $\max_{x \in \mathbb{R}} |e_k(x)| \leq \widetilde{C} (k+1)^{-1/12}$. More precisely, there exist positive constants C and γ such that, for every k in \mathbb{N} ,

$$|e_k(x)| \leq \begin{cases} C (k+1)^{-1/12} & \text{if } |x| \leq 2\sqrt{k+1}, \\ C e^{-\gamma x^2} & \text{if } |x| > 2\sqrt{k+1}. \end{cases} \quad (2.8)$$

See [37] for proofs.

In order to study precisely $\mathcal{S}(\mathbb{R})$ and its dual $\mathcal{S}'(\mathbb{R})$ it is desirable to have a family of norms on the space $\mathcal{S}(\mathbb{R})$ which gives us the usual topology.

Definition 2.1. Let $(|\cdot|_p)_{p \in \mathbb{Z}}$ be the family of norm defined by

$$|f|_p^2 := \sum_{k=0}^{+\infty} (2k+2)^{2p} \langle f, e_k \rangle_{L^2(\mathbb{R})}^2, \quad \forall (p, f) \in \mathbb{Z} \times L^2(\mathbb{R}). \quad (2.9)$$

For p in \mathbb{N} , define the spaces $\mathcal{S}_p(\mathbb{R}) := \{f \in L^2(\mathbb{R}), |f|_p < +\infty\}$ and $\mathcal{S}_{-p}(\mathbb{R})$ as being the completion of the space $L^2(\mathbb{R})$ with respect to the norm $|\cdot|_{-p}$.

Remark 2.2. For a function f which is not in $L^2(\mathbb{R})$, we may still define $|f|_p$ by allowing $|f|_p$ to be infinite.

It is well known (see [27]) that the Schwartz space $\mathcal{S}(\mathbb{R})$ is the projective limit of the sequence $(\mathcal{S}_p(\mathbb{R}))_{p \in \mathbb{N}}$ and that the space $\mathcal{S}'(\mathbb{R})$ of tempered distributions is the inductive limit of the sequence $(\mathcal{S}_{-p}(\mathbb{R}))_{p \in \mathbb{N}}$. This means firstly that both equalities $\mathcal{S}(\mathbb{R}) = \bigcap_{p \in \mathbb{N}} \mathcal{S}_p(\mathbb{R})$ and $\mathcal{S}'(\mathbb{R}) = \bigcup_{p \in \mathbb{N}} \mathcal{S}_{-p}(\mathbb{R})$ hold. Secondly that convergence in $\mathcal{S}(\mathbb{R})$ is nothing but convergence in $\mathcal{S}_p(\mathbb{R})$ for every p in \mathbb{N} and that convergence in $\mathcal{S}'(\mathbb{R})$ is convergence in $\mathcal{S}_{-p}(\mathbb{R})$ for some p in \mathbb{N} . Moreover one can show that, for any p in \mathbb{N} , the dual space $\mathcal{S}'_p(\mathbb{R})$ of $\mathcal{S}_p(\mathbb{R})$ is $\mathcal{S}_{-p}(\mathbb{R})$. This is the reason why we will write $\mathcal{S}_{-p}(\mathbb{R})$ in the sequel to denote the space $\mathcal{S}'_p(\mathbb{R})$. Finally one can show that the usual topology of the space $\mathcal{S}(\mathbb{R})$ and the topology given by the family of norms $(|\cdot|_p)_{p \in \mathbb{N}}$ are the same (see [20] appendix A.3 for example). Moreover, convergence in the inductive limit topology coincides with both convergence in the strong and the weak* topologies of $\mathcal{S}'(\mathbb{R})$.

In view of definition 2.1, it is convenient to have an operator defined on $\mathcal{S}(\mathbb{R})$ whose eigenfunctions are the sequence $(e_n)_{n \in \mathbb{N}}$ and eigenvalues are the sequence $(2n+2)_{n \in \mathbb{N}}$. It is easy to check that the operator A , defined on $\mathcal{S}(\mathbb{R})$, by

$$A := -\frac{d^2}{dx^2} + x^2 + 1 \quad (2.10)$$

verifies these conditions. Moreover A is an isometry from $(\mathcal{S}(\mathbb{R}), |\cdot|_1)$ to $(L^2(\mathbb{R}), |\cdot|_0)$.

It may thus be extended to an operator, still denoted A , from $\overline{\mathcal{S}(\mathbb{R})}^{\|\cdot\|_1} = \mathcal{S}_1(\mathbb{R})$ to $L^2(\mathbb{R})$. It is then easy to show (see [27] p.17-18 for instance) that A is invertible and that its inverse A^{-1} is a bounded operator on $L^2(\mathbb{R})$. Let us note $|g|_0^2 := \|g\|_{L^2(\mathbb{R})}^2$ for any g in $L^2(\mathbb{R})$. For p in \mathbb{Z} , let A^p denote the p^{th} iteration of the operator A , if p belongs to \mathbb{N} , and of A^{-1} otherwise. Then $\text{Dom}(A^p) = \mathcal{S}_p(\mathbb{R})$ and $\text{Dom}(A^{-p}) = L^2(\mathbb{R})$ where $\text{Dom}(U)$ denotes the domain of the operator U and p belongs to \mathbb{N} . Moreover, for every q in \mathbb{Z} and every $f := \sum_{k=0}^{+\infty} \langle f, e_k \rangle_{L^2(\mathbb{R})} e_k$ in $\text{Dom}(A^q)$, the equality $A^q f = \sum_{k=0}^{+\infty} (2k+2)^q \langle f, e_k \rangle_{L^2(\mathbb{R})} e_k$ holds. Hence,

$$|f|_q^2 = |A^q f|_0^2 = \sum_{k=0}^{+\infty} (2k+2)^{2q} \langle f, e_k \rangle_{L^2(\mathbb{R})}^2, \quad \forall q \in \mathbb{Z}. \quad (2.11)$$

2.3 Space of Hida distributions

From now on we will denote as is customary (L^2) the space $L^2(\Omega, \mathcal{G}, \mu)$ where \mathcal{G} is the σ -field generated by $\langle \cdot, f \rangle_{f \in L^2(\mathbb{R})}$. Neither Brownian motion nor fractional Brownian motion, whatever the value of H , are differentiable (see [31] for a proof). However, it occurs that the mapping $t \mapsto B^{(H)}(t)$ is differentiable from \mathbb{R} into a space, noted $(\mathcal{S})^*$, called the space of Hida distributions, which contains (L^2) . In this section we recall the construction of $(\mathcal{S})^*$.

For every random variable Φ of (L^2) there exists, according to the Wiener-Itô theorem, a unique sequence $(f_n)_{n \in \mathbb{N}}$ of functions f_n in $\widehat{L}^2(\mathbb{R}^n)$ such that Φ can be decomposed as

$$\Phi = \sum_{n=0}^{+\infty} I_n(f_n) \quad (2.12)$$

where $\widehat{L}^2(\mathbb{R}^n)$ denotes the set of all symmetric functions f in $L^2(\mathbb{R}^n)$ and $I_n(f)$ denotes the n^{th} multiple Wiener-Itô integral of f defined by

$$I_n(f) := \int_{\mathbb{R}^n} f(t) dB^n(t) = n! \int_{\mathbb{R}} \left(\int_{-\infty}^{t_n} \cdots \left(\int_{-\infty}^{t_1} f(t_1, \dots, t_n) dB(t_1) \right) dB(t_2) \cdots dB(t_n) \right), \quad (2.13)$$

with the convention that $I_0(f_0) = f_0$ for constants f_0 . Moreover we have the isometry $E[\Phi^2] = \sum_{n=0}^{+\infty} n! \|f_n\|_{L^2(\mathbb{R}^n)}^2$. For any $\Phi := \sum_{n=0}^{+\infty} I_n(f_n)$ satisfying the condition $\sum_{n=0}^{+\infty} n! |A^{\otimes n} f_n|_0^2 < +\infty$, define the element $\Gamma(A)(\Phi)$ of (L^2) by

$$\Gamma(A)(\Phi) := \sum_{n=0}^{+\infty} I_n(A^{\otimes n} f_n), \quad (2.14)$$

where $A^{\otimes n}$ denotes the n^{th} tensor power of the operator A defined in (2.10) (see [25] appendix E for more details about tensor products of operators). The operator $\Gamma(A)$ is densely defined on (L^2) and is called the second quantization operator of A . It shares a lot of properties with the operator A . In particular it is invertible and its inverse $\Gamma(A)^{-1}$ is bounded (see [27]). Let us denote $\|\varphi\|_0^2 := \|\varphi\|_{(L^2)}^2$ for any random variable φ in (L^2) and, for n in \mathbb{N} , let $\text{Dom}(\Gamma(A)^n)$ be the domain of the n^{th} iteration of $\Gamma(A)$. The space of Hida distributions is defined in a way analogous to the one that allowed to define the space $\mathcal{S}'(\mathbb{R})$:

Definition 2.2. Define the family of norms $(\|\cdot\|_p)_{p \in \mathbb{Z}}$ by:

$$\|\Phi\|_p := \|\Gamma(A)^p \Phi\|_0 = \|\Gamma(A)^p \Phi\|_{(L^2)}, \quad \forall p \in \mathbb{Z}, \quad \forall \Phi \in (L^2) \cap \text{Dom}(\Gamma(A)^p). \quad (2.15)$$

For any p in \mathbb{N} , let $(\mathcal{S}_p) := \{\Phi \in (L^2) : \Gamma(A)^p \Phi \text{ exists and belongs to } (L^2)\}$ and define (\mathcal{S}_{-p}) as being the completion of the space (L^2) with respect to the norm $\|\cdot\|_{-p}$.

As in [27], we let (\mathcal{S}) denote the projective limit of the sequence $((\mathcal{S}_p))_{p \in \mathbb{N}}$ and $(\mathcal{S})^*$ the inductive limit of the sequence $((\mathcal{S}_{-p}))_{p \in \mathbb{N}}$. Again this means that we have the equalities $(\mathcal{S}) = \bigcap_{p \in \mathbb{N}} (\mathcal{S}_p)$ (resp. $(\mathcal{S})^* = \bigcup_{p \in \mathbb{N}} (\mathcal{S}_{-p})$) and that convergence in (\mathcal{S}) (resp. in $(\mathcal{S})^*$) means convergence in $(\mathcal{S}_p)^*$ (resp. in (\mathcal{S}_{-p})) for every p in \mathbb{N} (resp. convergence in (\mathcal{S}_{-p}) for some p in \mathbb{N}). The space (\mathcal{S}) is called the space of stochastic test functions and $(\mathcal{S})^*$ the space of Hida distributions. As previously one can show that, for any p in \mathbb{N} , the dual space $(\mathcal{S}_p)^*$ of \mathcal{S}_p is (\mathcal{S}_{-p}) . Thus we will write (\mathcal{S}_{-p}) , in the sequel, to denote the space $(\mathcal{S}_p)^*$. Note also that $(\mathcal{S})^*$ is the dual space of (\mathcal{S}) . We will note $\llbracket \cdot, \cdot \rrbracket$, \gg the duality bracket between $(\mathcal{S})^*$ and (\mathcal{S}) . If Φ belongs to (L^2) then we have the equality $\llbracket \Phi, \varphi \gg = \langle \Phi, \varphi \rangle_{(L^2)} = \mathbb{E}[\Phi \varphi]$. Furthermore, as one can check, the family $(\|f\|_p)_{p \in \mathbb{Z}}$ is an increasing sequence for every f in $\mathcal{S}(\mathbb{R})$. Thus the family $(\|\langle \cdot, f \rangle\|_p)_{p \in \mathbb{Z}}$ is an increasing sequence for every f in $\mathcal{S}(\mathbb{R})$.

Remark 2.3. (i) A consequence of the previous subsection is that for every element $f := \sum_{n=0}^{+\infty} a_n e_n$ in $\mathcal{S}'(\mathbb{R})$ where $(a_n)_{n \in \mathbb{N}}$ belongs to $\mathbb{R}^{\mathbb{N}}$, there exists p_0 in \mathbb{N} such that f belongs to $\mathcal{L}_{p_0}(\mathbb{R})$. Moreover if we define $\Phi := \sum_{n=0}^{+\infty} a_n \langle \cdot, e_n \rangle$, then Φ belongs to $(\mathcal{S}_{-p_0}) \subset (\mathcal{S})^*$ and we have $\|\Phi\|_{-p_0}^2 = |f|_{-p_0}^2 = \sum_{n=0}^{+\infty} \frac{a_n^2}{(2n+2)^{2p_0}} < +\infty$. Conversely, every element Φ , written as $\Phi := \sum_{n=0}^{+\infty} b_n \langle \cdot, e_n \rangle$ where $(b_n)_{n \in \mathbb{N}}$ belongs to $\mathbb{R}^{\mathbb{N}}$, belongs to $(\mathcal{S})^*$ if and only if there exists an integer p_0 such that $\sum_{n=0}^{+\infty} \frac{b_n^2}{(2n+2)^{2p_0}} < +\infty$. In this case the element $f := \sum_{n=0}^{+\infty} b_n e_n$ belongs to $\mathcal{L}_{p_0}(\mathbb{R})$ and hence is a tempered distribution which verifies $|f|_{-p_0}^2 = \|\Phi\|_{-p_0}^2 = \sum_{n=0}^{+\infty} \frac{b_n^2}{(2n+2)^{2p_0}}$.

(ii) Let $\widehat{\mathcal{S}}(\mathbb{R}^n)$ be the space of symmetric Schwartz functions defined on \mathbb{R}^n . Let p in \mathbb{N}^* and Φ be an element of (\mathcal{S}_{-p}) . Then Φ can be written $\Phi := \sum_{n=0}^{+\infty} I_n(F_n)$, where $(F_n)_{n \in \mathbb{N}}$ is a sequence in $(\widehat{\mathcal{S}}'(\mathbb{R}^n))^{\mathbb{N}}$, where $\widehat{\mathcal{S}}'(\mathbb{R}^n)$ is the dual of $\widehat{\mathcal{S}}(\mathbb{R}^n)$.

Since we have defined a topology given by a family of norms on the space $(\mathcal{S})^*$ it is possible to define a derivative and an integral in $(\mathcal{S})^*$ (see [22] chapter 3 for more details about these notions). Let I be an interval of \mathbb{R} (which may be equal to \mathbb{R}).

Definition 2.3 (stochastic distribution process). A function $\Phi : I \rightarrow (\mathcal{S})^*$ is called a stochastic distribution process, or an $(\mathcal{S})^*$ -process, or a Hida process.

Definition 2.4 (derivative in $(\mathcal{S})^*$). Let $t_0 \in I$. A stochastic distribution process $\Phi : I \rightarrow (\mathcal{S})^*$ is said to be differentiable at t_0 if the quantity $\lim_{r \rightarrow 0} r^{-1} (\Phi(t_0 + r) - \Phi(t_0))$ exists in $(\mathcal{S})^*$. We note $\frac{d\Phi}{dt}(t_0)$ the $(\mathcal{S})^*$ -derivative at t_0 of the stochastic distribution process Φ . Φ is said to be differentiable over I if it is differentiable at t_0 for every t_0 in I .

The process Φ is said to be continuous, C^1, \dots, C^k, \dots in $(\mathcal{S})^*$ if the $(\mathcal{S})^*$ -valued function Φ is, continuous, C^1, \dots, C^k, \dots . We also say that the stochastic distribution process Φ is $(\mathcal{S})^*$ -continuous and so on. It is also possible to define an $(\mathcal{S})^*$ -valued integral in the following way ([27, 22]). We first recall that $L^1(\mathbb{R}, dt)$ denotes the set of measurable complex-valued functions defined on \mathbb{R} such that $\|f\|_{L^1(\mathbb{R})} := \int_{\mathbb{R}} |f(t)| dt < +\infty$.

Theorem-Definition 2.1 (integral in $(\mathcal{S})^*$). Assume that $\Phi : \mathbb{R} \rightarrow (\mathcal{S})^*$ is weakly in $L^1(\mathbb{R}, dt)$, i.e. assume that for all φ in (\mathcal{S}) , the mapping $u \mapsto \ll \Phi(u), \varphi \gg$ from \mathbb{R} to \mathbb{R} belongs to $L^1(\mathbb{R}, dt)$. Then there exists a unique element in $(\mathcal{S})^*$, noted $\int_{\mathbb{R}} \Phi(u) du$ such that

$$\ll \int_{\mathbb{R}} \Phi(u) du, \varphi \gg = \int_{\mathbb{R}} \ll \Phi(u), \varphi \gg du \quad \text{for all } \varphi \text{ in } (\mathcal{S}). \quad (2.16)$$

We say in this case that Φ is $(\mathcal{S})^*$ -integrable on \mathbb{R} in the Pettis sense. In the sequel, when we do not specify a name for the integral of an $(\mathcal{S})^*$ -integrable process Φ on \mathbb{R} , we always refer to the integral of Φ in Pettis' sense. See [27] p.245-246 or [22] def. 3.7.1 p.77 for more details.

Recall from (2.5) that $I_1(f) = \int_{\mathbb{R}} f(s) dB(s)$. For p in \mathbb{N} , let $I_1^{(p)} : (L^2(\mathbb{R}), \|\cdot\|_{-p}) \rightarrow ((L^2), \|\cdot\|_{-p})$ be the map defined by $I_1^{(p)}(f) := \langle \cdot, f \rangle$. For f in $L^2(\mathbb{R})$ and p in \mathbb{N} we have, using [27] p 26, the equality $\|I_1^{(p)}(f)\|_{-p} = \|\Gamma(A)^{-p}(I_1(f))\|_0 = \|I_1(A^{-p}(f))\|_0 = \|A^{-p}(f)\|_0 = \|f\|_{-p}$.

Hence $I_1^{(p)}$ is an isometry and we can extend it to $\mathcal{S}_{-p}(\mathbb{R})$. Since we can do this for every integer p in \mathbb{N} , we may then give a meaning to $I_1(f) = \langle \cdot, f \rangle$ for every tempered distribution f as being the element $I_1^{(p)}(f)$ where f belongs to $\mathcal{S}_{-p}(\mathbb{R})$.

Remark 2.4. We will also note $\int_{\mathbb{R}} f(s) dB(s)$ the quantity $\langle \cdot, f \rangle$ when f belongs to $\mathcal{S}'(\mathbb{R})$. Hence we give a meaning to the quantity $\int_{\mathbb{R}} f(s) dB(s)$ for every f in $\mathcal{S}'(\mathbb{R})$.

2.4 S-transform and Wick product

For η in $\mathcal{S}(\mathbb{R})$, the Wick exponential of $\langle \cdot, \eta \rangle$, denoted $: e^{\langle \cdot, \eta \rangle} :$, is defined as the element of (\mathcal{S}) given by $: e^{\langle \cdot, \eta \rangle} : \stackrel{\text{def}}{=} \sum_{k=0}^{+\infty} k!^{-1} I_k(\eta^{\otimes k})$ (equality in (L^2)). More generally, for $f \in L^2(\mathbb{R})$, we define $: e^{\langle \cdot, f \rangle} :$ as the (L^2) random variable equal to $e^{\langle \cdot, f \rangle - \frac{1}{2}\|f\|_0^2}$ (see [25] theorem 3.33). We will sometimes note $\exp^\circ \langle \cdot, f \rangle$ instead of $: e^{\langle \cdot, f \rangle} :$. This random variable belongs to $L^p(\Omega, \mu)$ for every integer $p \geq 1$. We now recall the definition of the S -transform of an element Φ of (\mathcal{S}^*) , noted $S(\Phi)$ or $S[\Phi]$. $S(\Phi)$ is defined as the function from $\mathcal{S}(\mathbb{R})$ to \mathbb{R} given by

$$\forall \eta \in \mathcal{S}(\mathbb{R}), \quad S(\Phi)(\eta) := \ll \Phi, : e^{\langle \cdot, \eta \rangle} : \gg . \quad (2.17)$$

Note that $S\Phi(\eta)$ is nothing but $\mathbb{E}[\Phi : e^{\langle \cdot, \eta \rangle} :] = e^{-\frac{1}{2}\|\eta\|_0^2} \mathbb{E}[\Phi e^{\langle \cdot, \eta \rangle}]$ when Φ belongs to (L^2) . Following [5], formula (6) and (7), define for η in $\mathcal{S}(\mathbb{R})$ the probability measure \mathbb{Q}_η on the space (Ω, \mathcal{F}) by its Radon-Nikodym derivative given by $\frac{d\mathbb{Q}_\eta}{d\mu} \stackrel{\text{def}}{=} : e^{\langle \cdot, \eta \rangle} :$. The probability measures \mathbb{Q}_η and μ are equivalent. Then, by definition,

$$\forall \Phi \in (L^2), \quad S(\Phi)(\eta) = \mathbb{E}_{\mathbb{Q}_\eta}[\Phi]. \quad (2.18)$$

Lemma 2.5. 1. Let p be a positive integer and Φ be an element of (\mathcal{S}_{-p}) . Then

$$|S(\Phi)(\eta)| \leq \|\Phi\|_{-p} e^{\frac{1}{2}\|\eta\|_p^2}, \quad \text{for any } \eta \text{ in } \mathcal{S}(\mathbb{R}). \quad (2.19)$$

2. Let $\Phi := \sum_{k=0}^{+\infty} a_k \langle \cdot, e_k \rangle$ belong to $(\mathcal{S})^*$. The following equality holds for every η in $\mathcal{S}(\mathbb{R})$:

$$S(\Phi)(\eta) = \sum_{k=0}^{+\infty} a_k \langle \eta, e_k \rangle_{L^2(\mathbb{R})}. \quad (2.20)$$

Proof. Item 1 is proved in [27] p.79. Item 2 is an easy calculation left to the reader. \square

Another useful tool in white noise analysis is the Wick product:

Theorem-Definition 2.2 ([27] p.92). *For every $(\Phi, \Psi) \in (\mathcal{S})^* \times (\mathcal{S})^*$, there exists a unique element of $(\mathcal{S})^*$, called the Wick product of Φ and Ψ and noted $\Phi \diamond \Psi$, such that, for every η in $\mathcal{S}(\mathbb{R})$,*

$$S(\Phi \diamond \Psi)(\eta) = S(\Phi)(\eta) S(\Psi)(\eta). \quad (2.21)$$

Lemma 2.6. *For any $(p, q) \in \mathbb{N}^2$, $X \in (\mathcal{S}_{-p})$ and $Y \in (\mathcal{S}_{-q})$,*

$$|S(X \diamond Y)(\eta)| \leq \|X\|_{-p} \|Y\|_{-q} e^{|\eta|_{\max\{p,q\}}^2}. \quad (2.22)$$

Proof. The proof is easy since, for every η in $\mathcal{S}(\mathbb{R})$, using lemma 2.5,

$$|S(X \diamond Y)(\eta)| = |S(X)(\eta)| |S(Y)(\eta)| \leq \|X\|_{-p} e^{\frac{1}{2}|\eta|_p^2} \|Y\|_{-q} e^{\frac{1}{2}|\eta|_q^2} \leq \|X\|_{-p} \|Y\|_{-q} e^{|\eta|_{\max\{p,q\}}^2}. \quad \square$$

For any Φ in $(\mathcal{S})^*$ and k in \mathbb{N}^* let $\Phi^{\diamond k}$ denote the element $\overbrace{\Phi \diamond \cdots \diamond \Phi}^{k \text{ times}}$ of $(\mathcal{S})^*$. We can generalize the definition of \exp^\diamond to the case where Φ belongs to $(\mathcal{S})^*$:

Definition 2.5. *For any Φ in $(\mathcal{S})^*$ such that the sum $\sum_{k=0}^{+\infty} \frac{\Phi^{\diamond k}}{k!}$ converges in $(\mathcal{S})^*$, define the element $\exp^\diamond \Phi$ of $(\mathcal{S})^*$ by $\exp^\diamond \Phi := \sum_{k=0}^{+\infty} \frac{\Phi^{\diamond k}}{k!}$.*

For f in $L^2(\mathbb{R})$ and $\Phi := \langle \cdot, f \rangle$, it is easy to verify that $\exp^\diamond \Phi$ given by definition 2.5 exists and coincide with $: e^{\langle \cdot, f \rangle} :$ defined at the beginning of this section.

Remark 2.7. *If Φ is deterministic then, for all Ψ in $(\mathcal{S})^*$, $\Phi \diamond \Psi = \Phi \Psi$. Moreover, let $(X_t)_{t \in \mathbb{R}}$ be a Gaussian process and let \mathcal{H} be the subspace of (L^2) defined by $\mathcal{H} := \overline{\text{vect}_{\mathbb{R}}\{X_t; t \in \mathbb{R}\}}^{(L^2)}$. If X and Y are two elements of \mathcal{H} then $X \diamond Y = XY - \mathbb{E}[XY]$.*

We refer to [25] chapters 3 and 16 for more details about Wick product. The following results on the S-transform will be used in the sequel. See [27] p.39 and [21] p.280-281 for proofs.

Lemma 2.8. *The S-transform verifies the following properties:*

(i) *The map $S : \Phi \mapsto S(\Phi)$, from $(\mathcal{S})^*$ to $(\mathcal{S})^*$, is injective.*

(ii) *Let $\Phi : \mathbb{R} \rightarrow (\mathcal{S})^*$ be an $(\mathcal{S})^*$ process. If Φ is $(\mathcal{S})^*$ -integrable over \mathbb{R} then*

$$S\left(\int_{\mathbb{R}} \Phi(u) du\right)(\eta) = \int_{\mathbb{R}} S(\Phi(u))(\eta) du, \text{ for all } \eta \text{ in } \mathcal{S}(\mathbb{R}).$$

(iii) *Let $\Phi : \mathbb{R} \rightarrow (\mathcal{S})^*$ be an $(\mathcal{S})^*$ -process differentiable at t . Then, for every η in $\mathcal{S}(\mathbb{R})$ the map $u \mapsto [S\Phi(u)](\eta)$ is differentiable at t and verifies $S\left[\frac{d\Phi}{dt}(t)\right](\eta) = \frac{d}{dt}[S[\Phi(t)](\eta)]$.*

It is useful to have a criterion for integrability in $(\mathcal{S})^*$ in term of the S-transform. This is the topic of the next theorem (theorem 13.5 in [27]).

Theorem 2.9. *Let $\Phi : \mathbb{R} \rightarrow (\mathcal{S})^*$ be a stochastic distribution process satisfying:*

(i) *The map $t \mapsto S[\Phi(t)](\eta)$, from \mathbb{R} to \mathbb{R} , is measurable for all η in $\mathcal{S}(\mathbb{R})$.*

(ii) *There is a natural integer p , a real a and a function L in $L^1(\mathbb{R}, dt)$ such that for all η in $\mathcal{S}(\mathbb{R})$,*
 $|S(\Phi(t))(\eta)| \leq L(t) e^{a|\eta|_p^2}.$

Then Φ is $(\mathcal{S})^$ -integrable over \mathbb{R} .*

Lastly, when the stochastic distribution process is an (L^2) -valued process, the following result holds (see [5]):

Theorem 2.10. *Let $X : \mathbb{R} \rightarrow (L^2)$ be such that the function $t \mapsto S(X_t)(\eta)$ is measurable for all η in $\mathcal{S}(\mathbb{R})$ and that $t \mapsto \|X_t\|_0$ is in $L^1(\mathbb{R}, dt)$. Then X is $(\mathcal{S})^*$ -integrable over \mathbb{R} and*

$$\left\| \int_{\mathbb{R}} X_t dt \right\|_0 \leq \int_{\mathbb{R}} \|X_t\|_0 dt.$$

3 The operators M_H and their derivatives

3.1 Study of M_H

Let us fix some notations. We will still note \widehat{u} or $\mathcal{F}(u)$ the Fourier transform of a tempered distribution u and we let $L^1_{loc}(\mathbb{R})$ denote the set of measurable functions which are locally integrable on \mathbb{R} . We also identify, here and in the sequel, any function f of $L^1_{loc}(\mathbb{R})$ with its associated distribution, also noted T_f . We will say that a tempered distribution v is of function type if there exists a locally integrable function f such that $v = T_f$ (in particular, $\langle v, \phi \rangle = \int_{\mathbb{R}} f(t) \phi(t) dt$ for ϕ in $\mathcal{S}(\mathbb{R})$).

Let $H \in (0, 1)$. Following [15], we want to define an operator, denoted M_H , which is specified in the Fourier domain by

$$\widehat{M_H(u)}(y) := \frac{\sqrt{2\pi}}{c_H} |y|^{1/2-H} \widehat{u}(y), \quad y \in \mathbb{R}^*. \quad (3.1)$$

This operator is well defined on the homogeneous Sobolev space of order $1/2 - H$, $L^2_H(\mathbb{R})$:

$$L^2_H(\mathbb{R}) := \{u \in \mathcal{S}'(\mathbb{R}) : \widehat{u} = T_f; f \in L^1_{loc}(\mathbb{R}) \text{ and } \|u\|_H < +\infty\}, \quad (3.2)$$

where $\|u\|_H^2 := \frac{1}{c_H^2} \int_{\mathbb{R}} |\xi|^{1-2H} |\widehat{u}(\xi)|^2 d\xi$ derives from the inner product on $L^2_H(\mathbb{R})$, defined by:

$$\langle u, v \rangle_H := \frac{1}{c_H^2} \int_{\mathbb{R}} |\xi|^{1-2H} \widehat{u}(\xi) \overline{\widehat{v}(\xi)} d\xi, \quad (3.3)$$

and c_H has been defined right after formula (1.4) (the normalization constant $\frac{\sqrt{2\pi}}{c_H}$ will be explained in remark 3.5). It is well known - see [8] p.13 for example - that $(L^2_H(\mathbb{R}), \langle, \rangle_H)$ is a Hilbert space. The nature of the spaces $L^2_H(\mathbb{R})$ when H spans $(0, 1)$ is described in the following lemma, the proof of which can be found in [8] p.15, theorem 1.4.1 and corollary 1.4.1.

Lemma 3.1. *If H is in $(0, 1/2]$, the space $L^2_H(\mathbb{R})$ is continuously embedded in $L^{1/H}(\mathbb{R})$. When H is in $[1/2, 1)$, the space $L^{1/H}(\mathbb{R})$ is continuously embedded in $L^2_H(\mathbb{R})$.*

Since $\widehat{M_H(u)}$ belongs to $L^2(\mathbb{R})$ for every u in $L^2_H(\mathbb{R})$, M_H is well defined as its inverse Fourier transform, i.e.:

$$M_H(u)(x) := \frac{1}{2\pi} \mathcal{F}(\widehat{M_H(u)})(-x), \quad \text{for almost every } x \text{ in } \mathbb{R}. \quad (3.4)$$

The following proposition is obvious in view of the definition of M_H :

Proposition 3.2. *M_H is an isometry from $(L^2_H(\mathbb{R}), \langle, \rangle_H)$ to $(L^2(\mathbb{R}), \langle, \rangle_{L^2(\mathbb{R})})$.*

Let $\mathcal{E}(\mathbb{R})$ denote the space of simple functions on \mathbb{R} , which is the set of all finite linear combinations of functions $\mathbb{1}_{[a,b]}(\cdot)$ with a and b in \mathbb{R} . It is easy to check that both $\mathcal{S}(\mathbb{R})$ and $\mathcal{E}(\mathbb{R})$ are subsets of $L^2_H(\mathbb{R})$. It will be useful in the sequel to have an explicit expression for $M_H(f)$ when f is in $\mathcal{S}(\mathbb{R})$ or in $\mathcal{E}(\mathbb{R})$. To compute this value, one may use the formulas for the Fourier transform of the distributions $|\cdot|^\alpha$, α in $(-1, 1)$, given for instance in [9] (chapter 1, § 3). This yields, for almost every x in \mathbb{R} ,

$$M_H(\mathbb{1}_{[a,b]})(x) = \frac{\sqrt{2\pi}}{2c_H \Gamma(H+1/2) \cos(\frac{\pi}{2}(H-1/2))} \left[\frac{b-x}{|b-x|^{3/2-H}} - \frac{a-x}{|a-x|^{3/2-H}} \right]. \quad (3.5)$$

By the same method, for f in $\mathcal{S}(\mathbb{R})$ one gets, for almost every real x :

$$\text{for } 0 < H < 1/2 \quad M_H(f)(x) = \gamma_H \int_{\mathbb{R}} \frac{f(x-t) - f(x)}{|t|^{3/2-H}} dt \quad (3.6)$$

$$\text{for } H = 1/2 \quad M_H(f)(x) = f(x) \quad (3.7)$$

$$\text{for } 1/2 < H < 1 \quad M_H(f)(x) = \gamma_H \int_{\mathbb{R}} \frac{f(t)}{|t-x|^{3/2-H}} dt \quad (3.8)$$

where $\gamma_H := \frac{\sqrt{2\pi}}{2c_H \Gamma(H-1/2) \cos(\frac{\pi}{2}(H-1/2))} = \frac{(\Gamma(2H+1) \sin(\pi H))^{\frac{1}{2}}}{2\Gamma(H-1/2) \cos(\frac{\pi}{2}(H-1/2))}$. When f belongs to $\mathcal{S}(\mathbb{R})$, equality (A.1) of [15] yields (up to a constant), for almost every x in \mathbb{R} ,

$$M_H(f)(x) = \alpha_H \frac{d}{dx} \left[\int_{\mathbb{R}} (t-x)|t-x|^{H-3/2} f(t) dt \right] \quad (3.9)$$

$$\text{where } \alpha_H := \frac{-\gamma_H}{H-1/2} = \frac{-\sqrt{2\pi}}{2c_H \Gamma(H+1/2) \cos(\frac{\pi}{2}(H-1/2))}. \quad (3.10)$$

In order to extend the Wiener integral with respect to fBm to an integral with respect to mBm (in section 4.2) we will need the following equality:

Proposition 3.3. $\overline{\mathcal{E}(\mathbb{R})}^{< \cdot, \cdot >^H} = L_H^2(\mathbb{R})$.

This is a straightforward consequence of the following lemma:

Lemma 3.4. *Let $\sigma : \mathbb{R} \rightarrow \mathbb{C}$ be a measurable function, continuous on \mathbb{R}^* , such that $|\sigma|^2$ is locally integrable at 0 and that $x \mapsto \left| \frac{\sigma(x)}{x} \right|^2$ is locally integrable at $+\infty$. Define $L_\sigma^2(\mathbb{R}) := \{u \in \mathcal{S}'(\mathbb{R}) : \widehat{u} = T_f; f \in L_{loc}^1(\mathbb{R}) \text{ such that } \|u\|_\sigma < +\infty\}$ where $\langle u, v \rangle_\sigma := \int_{\mathbb{R}} |\sigma(\xi)|^2 \widehat{u}(\xi) \overline{\widehat{v}(\xi)} d\xi$. If $\mathcal{E}(\mathbb{R}) \subset L_\sigma^2(\mathbb{R})$, define $\overline{\mathcal{E}(\mathbb{R})}^{< \cdot, \cdot >_\sigma}$ as the completion of $\mathcal{E}(\mathbb{R})$ for the norm $\| \cdot \|_\sigma$. Then, the space $(L_\sigma^2(\mathbb{R}), \langle \cdot, \cdot \rangle_\sigma)$ is a Hilbert space which also verifies $\overline{\mathcal{E}(\mathbb{R})}^{< \cdot, \cdot >_\sigma} = L_\sigma^2(\mathbb{R})$.*

Proof. The fact that $(L_\sigma^2(\mathbb{R}), \langle \cdot, \cdot \rangle_\sigma)$ is a Hilbert space is obvious. One needs only to show that the orthogonal space of $\mathcal{E}(\mathbb{R})$ for the norm $\| \cdot \|_\sigma$ is equal to $\{0_{\mathcal{E}(\mathbb{R})}\}$. Let u in $L_\sigma^2(\mathbb{R})$ be such that $\langle u, v \rangle_\sigma = 0$ for all v in $\mathcal{E}(\mathbb{R})$. In particular, for all t in \mathbb{R} , $\int_{\mathbb{R}} |\sigma(\xi)|^2 \widehat{u}(\xi) \overline{\mathbb{1}_{[0,t]}(\xi)} d\xi = 0$. For all ψ in $\mathcal{S}(\mathbb{R})$,

$$\int_{\mathbb{R}} \psi'(t) \left(\int_{\mathbb{R}} |\sigma(\xi)|^2 \widehat{u}(\xi) \overline{\mathbb{1}_{[0,t]}(\xi)} d\xi \right) dt = 0,$$

where ψ' denotes the derivative of ψ . Thanks to the assumptions on $|\sigma|^2$ and $x \mapsto \left| \frac{\sigma(x)}{x} \right|^2$, Fubini theorem applies. Moreover, an integration by parts yields

$$0 = - \int_{\mathbb{R}} \frac{|\sigma(\xi)|^2}{i\xi} \widehat{u}(\xi) \left(\int_{\mathbb{R}} \psi'(t) (1 - e^{i\xi t}) dt \right) d\xi = \int_{\mathbb{R}} |\sigma(\xi)|^2 \widehat{u}(\xi) \overline{\widehat{\psi}(\xi)} d\xi.$$

Thus $\langle |\sigma|^2 \widehat{u}, \psi \rangle = 0$ for all ψ in $\mathcal{S}(\mathbb{R})$. Since $\xi \mapsto |\sigma(\xi)|^2 \widehat{u}(\xi)$ belongs to $L_{loc}^1(\mathbb{R})$, it is easy to deduce that u is equal to 0. \square

Remark 3.5. 1. Because the space $\mathcal{S}(\mathbb{R})$ is dense in $L_H^2(\mathbb{R})$ for the norm $\| \cdot \|_H$ (see [8] p.13), it is also possible to define the operator M_H on the space $\mathcal{S}(\mathbb{R})$ and extend it, by isometry, to all elements of $L_H^2(\mathbb{R})$. This is the approach of [15] and [6] (with a different normalization constant). This clearly yields the same operator as the one defined by (3.1). However this approach does not lend itself to an extension to the case where the constant H is replaced by a function h , which is what we need for mBm. 2. For the same reasons as in 1. it is possible to define the operator M_H on the space $\mathcal{E}(\mathbb{R})$ and extend it, by isometry, to all elements of $L_H^2(\mathbb{R})$. Again, this extension coincide with (3.1). We will use this idea in section 4.2.

In view of (3.3), we find that

$$\langle \mathbb{1}_{[0,t]}, \mathbb{1}_{[0,s]} \rangle_H = \frac{1}{c_H^2} \int_{\mathbb{R}} \frac{(e^{it\xi} - 1)(e^{-is\xi} - 1)}{|\xi|^{2H+1}} d\xi = R_H(t, s). \quad (3.11)$$

As in the case of standard Brownian motion, one deduces that the process $(\widetilde{B}^{(H)}(t))_{t \in \mathbb{R}}$, defined for all (t, ω) in $\mathbb{R} \times \Omega$ by:

$$\widetilde{B}^{(H)}(t)(\omega) := \widetilde{B}^{(H)}(t, \omega) := \langle \omega, M_H(\mathbb{1}_{[0,t]}) \rangle, \quad (3.12)$$

is a Gaussian process which admits, as the next computation shows, a continuous version noted $B^{(H)} := (B^{(H)}(t))_{t \in \mathbb{R}}$. Indeed, under the probability measure μ , the process $B^{(H)}$ is a fractional Brownian motion since we have, using (3.11) and proposition 3.2,

$$\begin{aligned} \mathbb{E}[B^{(H)}(t)B^{(H)}(s)] &= \mathbb{E}[\langle \cdot, M_H(\mathbb{1}_{[0,t]}) \rangle \langle \cdot, M_H(\mathbb{1}_{[0,s]}) \rangle] \\ &= \langle M_H(\mathbb{1}_{[0,t]}), M_H(\mathbb{1}_{[0,s]}) \rangle_{L^2(\mathbb{R})} \\ &= \langle \mathbb{1}_{[0,t]}, \mathbb{1}_{[0,s]} \rangle_H = R_H(t, s). \end{aligned} \quad (3.13)$$

Remark 3.6. *The reason of the presence of the constant $\frac{\sqrt{2\pi}}{c_H}$ in formula (3.1) is now clear since this constant ensures that, for all H in $(0, 1)$, the process $B^{(H)}$ defined by (3.12) is a normalized fBm.*

Because our operator M_H is defined on a distribution space, we can not apply the considerations of [15] p.323ff about the links between the operator M_H and Riesz potential operator. However it is crucial for our purpose that M_H is bijective from $L_H^2(\mathbb{R})$ into $L^2(\mathbb{R})$:

Theorem 3.7 (properties of M_H). *1. For all H in $(0, 1)$, the operator M_H is bijective from $L_H^2(\mathbb{R})$ into $L^2(\mathbb{R})$.*

2. For all H in $(0, 1)$ and (f, g) in $(L^2(\mathbb{R}) \cap L_H^2(\mathbb{R}))^2$,

$$\langle f, M_H(g) \rangle_{L^2(\mathbb{R})} = \langle M_H(f), g \rangle_{L^2(\mathbb{R})}. \quad (3.14)$$

Moreover (3.14) remains true when f belongs to $L_{loc}^1(\mathbb{R}) \cap L_H^2(\mathbb{R})$ and g belongs to $\mathcal{S}(\mathbb{R})$ (in this case (3.14) reads $\langle f, M_H(g) \rangle = \langle M_H(f), g \rangle_{L^2(\mathbb{R})}$, where $\langle \cdot, \cdot \rangle$ denotes the duality bracket between $\mathcal{S}'(\mathbb{R})$ and $\mathcal{S}(\mathbb{R})$).

3. There exists a constant D such that, for every couple (H, k) in $(0, 1) \times \mathbb{N}^$,*

$$\max_{x \in \mathbb{R}} |M_H(e_k)(x)| \leq \frac{D}{c_H} (k+1)^{2/3}.$$

Proof. *1.* Since M_H is an isometry, we just have to establish the surjectivity of M_H , for all H in $(0, 1)$. The case $H = 1/2$ being obvious, let us fix H in $(0, 1) \setminus \{1/2\}$, g in $L^2(\mathbb{R})$ and define the complex-valued function w_H^g on \mathbb{R} by $w_H^g(\xi) = \frac{c_H}{\sqrt{2\pi}} |\xi|^{H-1/2} \hat{g}(\xi)$ if ξ belongs to \mathbb{R}^* and $w_H^g(0) := 0$. Define the tempered distribution v_H^g by $v_H^g := \frac{1}{2\pi} \widehat{w_H^g}$, where for all tempered distribution T , by definition, $\langle \check{T}, f \rangle := \langle T, \check{f} \rangle$ for all functions f in $\mathcal{S}(\mathbb{R})$ and where $\check{f}(x) = f(-x)$ for all x . We shall prove that v_H^g belongs to $L_H^2(\mathbb{R})$ and that $M_H(v_H^g) = g$. Note first that for all u in $\mathcal{S}'(\mathbb{R})$, $\widehat{\check{u}} = 2\pi\check{u}$. It is clear that $\widehat{v_H^g} = w_H^g$ and that $\widehat{v_H^g}$ belongs to $L_{loc}^1(\mathbb{R})$. Moreover, thanks to formula (3.3), we see that

$$\|v_H^g\|_H^2 = \frac{1}{c_H^2} \int_{\mathbb{R}} |\xi|^{1-2H} |\widehat{v_H^g}(\xi)|^2 d\xi = \frac{1}{2\pi} \int_{\mathbb{R}} |\widehat{g}(\xi)|^2 d\xi = \|g\|_{L^2(\mathbb{R})}^2 < +\infty.$$

This shows that v_H^g belongs to $L_H^2(\mathbb{R})$. We can then compute $\widehat{M_H(v_H^g)}$ and obtain, for almost every ξ in \mathbb{R} ,

$$\widehat{M_H(v_H^g)}(\xi) = \frac{\sqrt{2\pi}}{c_H} |\xi|^{1/2-H} \widehat{v_H^g}(\xi) = \frac{\sqrt{2\pi}}{c_H} |\xi|^{1/2-H} w_H^g(\xi) = \widehat{g}(\xi).$$

The previous equality shows that $M_H(v_H^g)$ is equal to g in $L^2(\mathbb{R})$ and then establish the surjectivity of M_H .

2. See equality (3.12) of [6]. The case where f belongs to $L_{loc}^1(\mathbb{R}) \cap L_H^2(\mathbb{R})$ is obvious, in view of (3.14), using the density of $\mathcal{S}(\mathbb{R})$ in $L_H^2(\mathbb{R})$.

3. is shown in lemma 4.1 of [15]. \square

Of course if we just consider functions in $L_H^2(\mathbb{R})$ instead of all elements of $L_H^2(\mathbb{R})$, the map M_H is not bijective any more.

3.2 Study of $\frac{\partial M_H}{\partial H}$

We now study the operator $\frac{\partial M_H}{\partial H}$. It will prove instrumental in defining the integral with respect to mBm in section 5.

Heuristically, we wish to differentiate with respect to H the expression in definition (3.1), *i.e.* differentiate the map $H \mapsto \widehat{M_H(u)}(y)$ on $(0, 1)$ for (u, y) in $L_H^2(\mathbb{R}) \times \mathbb{R}^*$, assuming this is possible. By doing so, we define a new operator, denoted $\frac{\partial M_H}{\partial H}$, from a certain subset of $L_H^2(\mathbb{R})$ to $L^2(\mathbb{R})$. Of course, in order to compute the derivative at H_0 of $H \mapsto \widehat{M_H(u)}(y)$, we need to consider a neighbourhood V_{H_0} of H_0 in $(0, 1)$ and thus consider only elements u which belong to $\bigcap_{H \in V_{H_0}} L_H^2(\mathbb{R})$. However, as will become apparent, the formula giving the derivative makes sense without this restriction.

In order to define in a rigorous manner the operator $\frac{\partial M_H}{\partial H}$, we shall proceed in a way analogous to the one that allowed to define M_H in the previous subsection. It will be shown in remark 3.9 that this construction effectively defines the derivative, in a certain sense, of the operator M_H .

We will note c'_H the derivative of the analytic map $H \mapsto c_H$ where c_H has been defined in (1.4) and set $\beta_H := \frac{c'_H}{c_H}$. Let H belong to $(0, 1)$. Define:

$$\Gamma_H(\mathbb{R}) = \{u \in \mathcal{S}'(\mathbb{R}) : \widehat{u} = T_f; f \in L_{loc}^1(\mathbb{R}) \text{ and } \|u\|_{\delta_H(\mathbb{R})} < +\infty\}, \quad (3.15)$$

where the norm $\|\cdot\|_{\delta_H(\mathbb{R})}$ derives from the inner product on $\Gamma_H(\mathbb{R})$ defined by

$$\langle u, v \rangle_{\delta_H} := \frac{1}{c_H^2} \int_{\mathbb{R}} (\beta_H + \ln |\xi|)^2 |\xi|^{1-2H} \widehat{u}(\xi) \overline{\widehat{v}(\xi)} d\xi. \quad (3.16)$$

By slightly adapting lemma 3.4, it is easy to check that $(\Gamma_H(\mathbb{R}), \langle \cdot, \cdot \rangle_{\delta_H(\mathbb{R})})$ is a Hilbert space which verifies the equality $\Gamma_H(\mathbb{R}) = \overline{\mathcal{S}(\mathbb{R})}^{\langle \cdot, \cdot \rangle_{\delta_H}} = \overline{\mathcal{E}(\mathbb{R})}^{\langle \cdot, \cdot \rangle_{\delta_H}}$. Note furthermore that, for every H in $(0, 1)$, the inclusion $\Gamma_H(\mathbb{R}) \subset L_H^2(\mathbb{R})$ holds. We may now define the operator $\frac{\partial M_H}{\partial H}$ from $(\Gamma_H(\mathbb{R}), \langle \cdot, \cdot \rangle_{\delta_H(\mathbb{R})})$ to $(L^2(\mathbb{R}), \langle \cdot, \cdot \rangle_{L^2(\mathbb{R})})$, in the Fourier domain, by:

$$\widehat{\frac{\partial M_H}{\partial H}(u)}(y) := -(\beta_H + \ln |y|) \frac{\sqrt{2\pi}}{c_H} |y|^{1/2-H} \widehat{u}(y), \text{ for every } y \text{ in } \mathbb{R}^*. \quad (3.17)$$

In particular, one can check that, for f in $\mathcal{S}(\mathbb{R})$, $\widehat{\frac{\partial M_H}{\partial H}(f)}(y) = \frac{\partial}{\partial H} \widehat{M_H(f)}(y)$ for almost every real y . Since $\widehat{\frac{\partial M_H}{\partial H}(u)}$ belongs to $L^2(\mathbb{R})$ for every u in $\Gamma_H(\mathbb{R})$, $\frac{\partial M_H}{\partial H}$ is well defined and given by its inverse Fourier transform from $(\Gamma_H(\mathbb{R}), \langle \cdot, \cdot \rangle_{\delta_H(\mathbb{R})})$ to $(L^2(\mathbb{R}), \langle \cdot, \cdot \rangle_{L^2(\mathbb{R})})$:

$$\frac{\partial M_H}{\partial H}(u)(x) = \frac{1}{2\pi} \mathcal{F}\left(\widehat{\frac{\partial M_H}{\partial H}(u)}\right)(-x), \text{ for almost every } x \text{ in } \mathbb{R}.$$

As in the previous subsection it will be useful to compute $\frac{\partial M_H}{\partial H}(f)$ for f in $\mathcal{S}(\mathbb{R})$. We summarize, in following proposition, the main properties of $\frac{\partial M_H}{\partial H}$.

Proposition 3.8. $\frac{\partial M_H}{\partial H}$ is an isometry from $(\Gamma_H(\mathbb{R}), \langle \cdot, \cdot \rangle_{\delta_H(\mathbb{R})})$ to $(L^2(\mathbb{R}), \langle \cdot, \cdot \rangle_{L^2(\mathbb{R})})$ which verifies:

$$\forall f \in \Gamma_H(\mathbb{R}), \quad \|f\|_{\delta_H} = \left\| \frac{\partial M_H}{\partial H}(f) \right\|_{L^2(\mathbb{R})}, \quad (3.18)$$

$$\forall (f, g) \in (\Gamma_H(\mathbb{R}) \cap L^2(\mathbb{R}))^2, \quad \langle \frac{\partial M_H}{\partial H}(f), g \rangle_{L^2(\mathbb{R})} = \langle f, \frac{\partial M_H}{\partial H}(g) \rangle_{L^2(\mathbb{R})}, \quad (3.19)$$

$$\forall f \in \mathcal{S}(\mathbb{R}) \cup \mathcal{E}(\mathbb{R}), \text{ and for a.e. } x \in \mathbb{R}, \quad \frac{\partial M_H}{\partial H}(f)(x) = \frac{\partial}{\partial H}[M_H(f)(x)]. \quad (3.20)$$

Proof. Equality (3.18) results immediately from the definition of $\frac{\partial M_H}{\partial H}$ and from (3.17). For any couple of functions (f, g) in $(\Gamma_H(\mathbb{R}) \cap L^2(\mathbb{R}))^2$,

$$\begin{aligned} \langle \frac{\partial M_H}{\partial H}(f), g \rangle_{L^2(\mathbb{R})} &= \frac{1}{2\pi} \langle \widehat{\frac{\partial M_H}{\partial H}(f)}, \widehat{g} \rangle_{L^2(\mathbb{R})} \\ &= \frac{1}{2\pi} \int_{\mathbb{R}} -(\beta_H + \ln |y|) \frac{\sqrt{2\pi}}{c_H} |y|^{1/2-H} \widehat{f}(y) \overline{\widehat{g}(y)} dy \\ &= \frac{1}{2\pi} \langle \widehat{f}, \widehat{\frac{\partial M_H}{\partial H}(g)} \rangle_{L^2(\mathbb{R})} = \langle f, \frac{\partial M_H}{\partial H}(g) \rangle_{L^2(\mathbb{R})}. \end{aligned}$$

It just remains to prove (3.20). Since we will not use (3.20) in the sequel for f in $\mathcal{E}(\mathbb{R})$, we will just establish it here on $\mathcal{S}(\mathbb{R})$. Let f be in $\mathcal{S}(\mathbb{R})$ and H in $(0, 1)$. Formulas (3.6), (3.7) and (3.8) can be summarized by

$$M_H(f)(x) = \gamma_H \langle |y|^{-(3/2-H)}, f(x+y) \rangle \quad \text{for almost every real } x,$$

where we have written, by abuse of notation, $|y|^{-(3/2-H)}$ for the tempered distribution $y \mapsto |y|^{-(3/2-H)}$ and $f(x+y)$ for the map $y \mapsto f(x+y)$. Using theorem 5.17 which is given in subsection 5.5 below, we may write

$$\frac{\partial}{\partial H}[M_H(f)(x)] = \gamma'_H \langle |y|^{-(3/2-H)}, f(x+y) \rangle + \gamma_H \langle |y|^{-(3/2-H)} \ln |y|, f(x+y) \rangle. \quad (3.21)$$

Furthermore, for almost every real x , we may write:

$$\begin{aligned} \frac{\partial M_H}{\partial H}(f)(x) &= \frac{1}{2\pi} \widehat{\widehat{\frac{\partial M_H}{\partial H}(f)}(-x)} = \frac{1}{2\pi} \mathcal{F}(y \mapsto -(\beta_H + \ln |y|) \frac{\sqrt{2\pi}}{c_H} |y|^{(1/2-H)} \widehat{f}(y))(-x) \\ &= -\beta_H M_H(f)(x) - \frac{1}{c_H \sqrt{2\pi}} \mathcal{F}(y \mapsto |y|^{(1/2-H)} \ln |y| \widehat{f}(y))(-x). \end{aligned}$$

Define, for every real x , $I(-x) := \mathcal{F}(y \mapsto |y|^{(1/2-H)} \ln |y| \widehat{f}(y))(-x)$ and, for every H in $(0, 1)$, $\nu_H := 2 \Gamma'(3/2 - H) \sin(\frac{\pi}{2}(1/2 - H)) + \pi \Gamma(3/2 - H) \cos(\frac{\pi}{2}(1/2 - H))$. Using [9] (p.173 – 174) we get, after some computations,

$$I(-x) = (-c_H \sqrt{2\pi}) \gamma_H \langle |y|^{-(3/2-H)} \ln |y|, f(x+y) \rangle - \nu_H \langle |y|^{-(3/2-H)}, f(x+y) \rangle.$$

We finally have, for almost every real x ,

$$\frac{\partial M_H}{\partial H}(f)(x) = \left(\frac{-\gamma_H c'_H}{c_H} + \frac{\nu_H}{c_H \sqrt{2\pi}} \right) \langle |y|^{-(3/2-H)}, f(x+y) \rangle + \gamma_H \langle |y|^{-(3/2-H)} \ln |y|, f(x+y) \rangle$$

which is nothing but (3.21) since $\frac{-\gamma_H c'_H}{c_H} + \frac{\nu_H}{c_H \sqrt{2\pi}} = \gamma'_H$. \square

Remark 3.9. For all positive real r and real H in $(0, 1)$ let $\Sigma_{H,r}(\mathbb{R})$ be the space defined by

$$\Sigma_{H,r}(\mathbb{R}) := \Gamma_H(\mathbb{R}) \cap \left(\bigcap_{H' \in [H-r, H+r]} L^2_{H'}(\mathbb{R}) \right)^1 \quad \text{and} \quad \Sigma_H(\mathbb{R}) := \bigcup_{r \in (0, \min(H, 1-H))} \Sigma_{H,r}(\mathbb{R}).$$

It is possible to show that, for all f in $\Sigma_H(\mathbb{R})$, $\frac{\partial M_H}{\partial H}(f)(\cdot)$ (resp. $\widehat{\frac{\partial M_H}{\partial H}(f)}(\cdot)$) is the derivative, in the $L^2(\mathbb{R})$ -sense, of $M_H(f)$ (resp. of $\widehat{M_H(f)}$). Note moreover that the inclusion $\mathcal{E}(\mathbb{R}) \cup \mathcal{S}(\mathbb{R}) \subset \bigcap_{r \in \mathbb{R}_+^*} \Sigma_{H,r}(\mathbb{R})$ holds.

4 Wiener integral with respect to mBm on \mathbb{R}

4.1 Wiener integral with respect to fBm

Similarly to what is performed in [15] and [6] (in these works this is done only for functions of $L^2_H(\mathbb{R})$), it is now easy to define a Wiener integral with respect to fractional Brownian motion. Indeed, for any

¹Note that we have the equality $\bigcap_{H \in [a,b]} L^2_H(\mathbb{R}) = L^2_a(\mathbb{R}) \cap L^2_b(\mathbb{R})$ for every $[a, b] \subset (0, 1)$.

element g in $L^2_H(\mathbb{R})$, define $\mathcal{J}^H(g)$ as the random variable $\langle \cdot, M_H(g) \rangle$. In other words, for all couples (ω, g) in $\Omega \times L^2_H(\mathbb{R})$:

$$\mathcal{J}^H(g)(\omega) := \langle \omega, M_H(g) \rangle = \int_{\mathbb{R}} M_H(g)(s) dB(s)(\omega), \quad (4.1)$$

where the Brownian motion B has been defined just below formula (2.5). We call the random variable $\mathcal{J}^H(g)$ the Wiener integral of g with respect to fBm. Once again, when g is a tempered distribution which is not a function, $g(s)$ does not have a meaning for a fixed real s and $\mathcal{J}^H(g)$ is just a notation for the centered Gaussian random variable $\langle \cdot, M_H(g) \rangle$.

Remark 4.1. *Note that, for H in $(0, 1)$, we are able to give a meaning to $\mathcal{J}^H(g)$ only for elements g which belong to $L^2_H(\mathbb{R})$ and not anymore for all elements g in $\mathcal{S}'(\mathbb{R})$ as was the case for $\int_{\mathbb{R}} g(s)dB(s)$ (see remark 2.4).*

4.2 Wiener integral with respect to mBm

We now consider a fractional Brownian field $\Lambda := (\Lambda(t, H))_{(t, H) \in \mathbb{R} \times (0, 1)}$, defined, for all (t, H) in $\mathbb{R} \times (0, 1)$ and all ω in Ω , by $\Lambda(t, H)(\omega) := B^{(H)}(t, \omega) := \langle \omega, M_H(\mathbf{1}_{[0, t]}) \rangle$. We wish to generalize the previous construction of the Wiener integral with respect to fBm to the case of mBm. This amounts to replacing the constant H by a continuous deterministic function h , ranging in $(0, 1)$. More precisely, let R_h denote the covariance function of a normalized mBm with function h (see definition 1.5). Define the bilinear form $\langle \cdot, \cdot \rangle_h$ on $\mathcal{E}(\mathbb{R}) \times \mathcal{E}(\mathbb{R})$ by $\langle \mathbf{1}_{[0, t]}, \mathbf{1}_{[0, s]} \rangle_h = R_h(t, s)$. Our construction of the integral of deterministic elements with respect to mBm requires that $\langle \cdot, \cdot \rangle_h$ be an inner product:

Proposition 4.2. *$\langle \cdot, \cdot \rangle_h$ is an inner product for every function h .*

Proof. See appendix B. □

Define the linear map M_h by:

$$\begin{aligned} M_h : (\mathcal{E}(\mathbb{R}), \langle \cdot, \cdot \rangle_h) &\rightarrow (L^2(\mathbb{R}), \langle \cdot, \cdot \rangle_{L^2(\mathbb{R})}) \\ \mathbf{1}_{[0, t]} &\mapsto M_h(\mathbf{1}_{[0, t]}) := M_{h(t)}(\mathbf{1}_{[0, t]}) := M_H(\mathbf{1}_{[0, t]})|_{H=h(t)}. \end{aligned}$$

Define the process $\tilde{B}^{(h)}(t) = \langle \cdot, M_h(\mathbf{1}_{[0, t]}) \rangle$, $t \in \mathbb{R}$. As Kolmogorov's criterion and the proof of following lemma show, this process admits a continuous version which will be noted $B^{(h)}$. A word on notation: we write $B^{(\cdot)}$ both for an fBm and an mBm. This should not cause any confusion since an fBm is just an mBm with constant h function. It will be clear from the context in the following whether the "h" is constant or not. Note that:

$$a.s., \forall t \in \mathbb{R}, \quad B^{(h)}(t) = B^{(H)}(t)|_{H=h(t)} \quad (4.2)$$

In view of point 2. in remark 3.5 we may state the following lemma.

Lemma 4.3. (i) *The process $B^{(h)}$ is a normalized mBm.*

(ii) *The map M_h is an isometry from $(\mathcal{E}(\mathbb{R}), \langle \cdot, \cdot \rangle_h)$ to $(L^2(\mathbb{R}), \langle \cdot, \cdot \rangle_{L^2(\mathbb{R})})$.*

Proof. The process $B^{(h)}$ is clearly a centered Gaussian process. Moreover, for all (s, t) in \mathbb{R}^2 ,

$$\begin{aligned} \mathbb{E}[B^{(h)}(t)B^{(h)}(s)] &= \mathbb{E}[\langle \cdot, M_h(\mathbf{1}_{[0, t]}) \rangle \langle \cdot, M_h(\mathbf{1}_{[0, s]}) \rangle] = \langle M_h(\mathbf{1}_{[0, t]}), M_h(\mathbf{1}_{[0, s]}) \rangle_{L^2(\mathbb{R})} \\ &= \frac{1}{2\pi} \langle \widehat{M_h(t)(\mathbf{1}_{[0, t]})}, \widehat{M_h(s)(\mathbf{1}_{[0, s]})} \rangle_{L^2(\mathbb{R})} = \frac{1}{c_{h(t)}c_{h(s)}} \int_{\mathbb{R}} \frac{(1 - e^{it\xi})(1 - e^{-is\xi})}{|\xi|^{1+2h_{t,s}}} d\xi \\ &= \frac{c_{h_{t,s}}^2}{c_{h(t)}c_{h(s)}} \frac{1}{2} (|t|^{2h_{t,s}} + |s|^{2h_{t,s}} - |t-s|^{2h_{t,s}}) = R_h(t, s) = \langle \mathbf{1}_{[0, t]}, \mathbf{1}_{[0, s]} \rangle_h. \quad \square \end{aligned}$$

By isometry, it is possible to extend M_h to the space $\overline{\mathcal{E}(\mathbb{R})}^{\langle \cdot, \cdot \rangle_h}$ and we shall still note M_h this extension. Define the isometry $\mathcal{J}^h := \zeta \circ M_h$ on $\overline{\mathcal{E}(\mathbb{R})}^{\langle \cdot, \cdot \rangle_h}$, i.e:

$$\mathcal{J}^h : \left(\overline{\mathcal{E}(\mathbb{R})}^{<>^h}, \langle \cdot, \cdot \rangle_h \right) \xrightarrow{M_h} \left(L^2(\mathbb{R}), \langle \cdot, \cdot \rangle_{L^2(\mathbb{R})} \right) \xrightarrow{\zeta} \left((L^2), \langle \cdot, \cdot \rangle_{(L^2)} \right) \\ \mathbb{1}_{[0,t]} \mapsto M_h(\mathbb{1}_{[0,t]}) \mapsto \langle \cdot, M_h(\mathbb{1}_{[0,t]}) \rangle .$$

We can now define the Wiener integral with respect to mBm in the natural following way:

Definition 4.1. Let $B^{(h)}$ be a normalized multifractional Brownian motion. We call Wiener integral on \mathbb{R} of an element u in $\overline{\mathcal{E}(\mathbb{R})}^{<>^h}$ with respect to $B^{(h)}$, the element $\mathcal{J}^h(u)$ of (L^2) defined thanks to the isometry \mathcal{J}^h given just above.

Remark 4.4. It follows from definition 4.1 that the Wiener integral of a finite linear combination of functions $\mathbb{1}_{[0,t]}$ is $\mathcal{J}^h(\sum_{k=1}^n \alpha_k \mathbb{1}_{[0,t_k]}) = \sum_{k=1}^n \alpha_k B_{t_k}^{(h)}$. Moreover, for any element u in $\overline{\mathcal{E}(\mathbb{R})}^{<>^h}$ (which may be a tempered distribution), the Wiener integral of u with respect to mBm, still denoted $\mathcal{J}^h(u)$, is given by $\mathcal{J}^h(u) \stackrel{\text{def}}{=} \lim_{n \rightarrow +\infty} \mathcal{J}^h(u_n)$, for any sequence of functions $(u_n)_{n \in \mathbb{N}}$ in $\mathcal{E}(\mathbb{R})^{\mathbb{N}}$ which converges to u in the norm $\|\cdot\|_h$ and where the convergence of $\mathcal{J}^h(u_n)$ holds in (L^2) .

Since we now have a construction of the Wiener integral with respect to mBm, it is natural to ask which functions admit such an integral. In particular, we do not know so far whether $\mathcal{S}(\mathbb{R}) \subset \overline{\mathcal{E}(\mathbb{R})}^{<>^h}$. The next section contains more information about the space $\overline{\mathcal{E}(\mathbb{R})}^{<>^h}$.

5 Stochastic integral with respect to mBm

5.1 Fractional White Noise

The following theorem will allow us to give a concrete example of a derivative of an $(\mathcal{S})^*$ -process.

Theorem 5.1. 1. For any real H in $(0, 1)$, the map $M_H(\mathbb{1}_{[0,\cdot]}) : \mathbb{R} \rightarrow \mathcal{S}'(\mathbb{R})$ defined by $M_H(\mathbb{1}_{[0,\cdot]})(t) := M_H(\mathbb{1}_{[0,t]})$ is differentiable over \mathbb{R} and its derivative, noted $\frac{d}{dt}[M_H(\mathbb{1}_{[0,t]})]$, is equal to $\sum_{k=1}^{+\infty} M_H(e_k)(t) e_k$, where the convergence is in $\mathcal{S}'(\mathbb{R})$.

2. For any interval I of \mathbb{R} and any differentiable map $F : I \rightarrow \mathcal{S}'(\mathbb{R})$, the element $\langle \cdot, F(t) \rangle$ is a differentiable stochastic distribution process which satisfies the equality $\frac{d}{dt} \langle \cdot, F(t) \rangle = \langle \cdot, \frac{d}{dt} F(t) \rangle$.

Proof. The proof of point 1 is a mere re-writing of the one of lemma 2.15 of [4] by replacing M_{\pm}^H by the operator M_H . Point 2 is theorem 2.17 of [4]. \square

Let $H \in (0, 1)$. The process $(B^{(H)}(t))_{t \in \mathbb{R}}$ defined in (3.12) is an fBm, and $M_H(\mathbb{1}_{[0,t]})$ belongs to $L^2(\mathbb{R})$ for every real t . Hence, using equality (3.14), we may write, for every real t and almost surely:

$$\begin{aligned} B^{(H)}(t) &= \langle \cdot, M_H(\mathbb{1}_{[0,t]}) \rangle = \langle \cdot, \sum_{k=0}^{+\infty} \langle M_H(\mathbb{1}_{[0,t]}), e_k \rangle_{L^2(\mathbb{R})} e_k \rangle \\ &= \sum_{k=0}^{+\infty} \langle \mathbb{1}_{[0,t]}, M_H(e_k) \rangle_{L^2(\mathbb{R})} \langle \cdot, e_k \rangle = \sum_{k=0}^{+\infty} \left(\int_0^t M_H(e_k)(u) du \right) \langle \cdot, e_k \rangle . \end{aligned} \quad (5.1)$$

(5.1) and the previous theorem lead to the definition of fractional white noise [15, 6]:

Example 5.2 (Fractional white noise). Let:

$$W^{(H)}(t) := \sum_{k=0}^{+\infty} M_H(e_k)(t) \langle \cdot, e_k \rangle . \quad (5.2)$$

Then $(W^{(H)}(t))_{t \in \mathbb{R}}$ is a $(\mathcal{S})^*$ -process and is the $(\mathcal{S})^*$ -derivative of the process $(B^{(H)}(t))_{t \in \mathbb{R}}$. The proof of this fact is simple: for any integer $p \geq 2$, using remark 2.3, the mean value theorem and the dominated convergence theorem,

$$\begin{aligned}
J_{p,r}(t) &:= \left\| \frac{B^{(H)}(t+r) - B^{(H)}(t)}{r} - W^{(H)}(t) \right\|_{-p}^2 = \left\| \sum_{k=0}^{+\infty} \left(\frac{1}{r} \int_t^{t+r} M_H(e_k)(u) du - M_H(e_k)(t) \right) \langle \cdot, e_k \rangle \right\|_{-p}^2 \\
&= \left\| \sum_{k=0}^{+\infty} \left(\frac{1}{r} \int_t^{t+r} M_H(e_k)(u) du - M_H(e_k)(t) \right) e_k \right\|_{-p}^2 \\
&= \sum_{k=0}^{+\infty} (2k+2)^{-2p} \left(\frac{1}{r} \int_t^{t+r} (M_H(e_k)(u) - M_H(e_k)(t)) du \right)^2 \xrightarrow{r \rightarrow 0} 0.
\end{aligned} \tag{5.3}$$

Remark 5.3. In particular we see that for all (t, H) in $\mathbb{R} \times (0, 1)$, $W^{(H)}(t)$ belongs to (\mathcal{S}_{-p}) as soon as $p \geq 2$.

Remark 5.4. There are several constructions of fBm. In particular, operators different from M_H may be considered. [4] uses an operator denoted M_+^H on the grounds that fBm as defined here is not adapted to the filtration generated by the driving Brownian motion as soon as $H \neq 1/2$. While this is indeed a drawback, the crucial property for our purpose is that the same probability space $(\mathcal{S}'(\mathbb{R}), \mathcal{G}, \mu)$ is used for all parameters H in $(0, 1)$. This allows to consider simultaneously several fractional Brownian motions with H taking any value in $(0, 1)$, which is necessary when one deals with mBm. We choose here to work with M_H rather than with M_+^H and M_-^H of [4] as its use is simpler. M_+^H and M_-^H would nevertheless allow for a more general approach encompassing the whole family of mBm at once. This topic will be treated in a forthcoming paper.

5.2 Multifractional White Noise

The main idea for defining a stochastic integral with respect to mBm is similar to the one used for fBm. We will relate the process $B^{(h)}$ to Brownian motion *via* the family of operators $(M_H)_{(H \in (0,1))}$. This will allow to define a multifractional white noise, analogous to the fractional white noise of example 5.2. From a heuristic point of view, multifractional white noise is obtained by differentiating with respect to t the fractional Brownian field $\Lambda(t, H)$ (defined at the beginning of section 4.2) along a curve $(t, h(t))$. Assuming that we may differentiate in the sense of $(\mathcal{S})^*$ (this will be justified below), the differential of Λ reads:

$$\begin{aligned}
d\Lambda(t, H) &= \frac{\partial \Lambda}{\partial t}(t, H) dt + \frac{\partial \Lambda}{\partial H}(t, H) dH = \frac{dB^{(H)}}{dt}(t) dt + \frac{\partial \Lambda}{\partial H}(t, H) dH \\
&= W^{(H)}(t) dt + \frac{\partial \Lambda}{\partial H}(t, H) dH,
\end{aligned} \tag{5.4}$$

where the equality will be shown to hold in $(\mathcal{S})^*$. With a differentiable function h in place of H , this formally yields

$$d\Lambda(t, h(t)) = (W^{(h(t))}(t) + h'(t) \frac{\partial \Lambda}{\partial H}(t, H)|_{H=h(t)}) dt. \tag{5.5}$$

In view of the definition of the stochastic integral with respect to fBm given in [15], [24] and [5], it then seems natural to set the following definition for the stochastic integral with respect to mBm of a Hida process $X : \mathbb{R} \rightarrow (\mathcal{S})^*$:

$$\begin{aligned}
\int_{\mathbb{R}} X(s) dB^{(h)}(s) &:= \int_{\mathbb{R}} X(s) d\Lambda(s, h(s)) \\
&:= \int_{\mathbb{R}} X(s) \diamond (W^{(h(s))}(s) + h'(s) \frac{\partial \Lambda}{\partial H}(s, H)|_{H=h(s)}) ds.
\end{aligned} \tag{5.6}$$

We shall then say that the process X is integrable with respect to mBm if the right hand side of (5.6) exists in $(\mathcal{S})^*$. Remark that when the function h is constant we recover of course the integral with respect to fBm.

In order to make the above ideas rigorous, we start by writing the chaos expansion of $B^{(h)}$. Since $M_H(g)$ belongs to $L^2(\mathbb{R})$ for all (g, H) in $\mathcal{S}(\mathbb{R}) \times (0, 1)$, we may define, for all H in $(0, 1)$, $M_H : \mathcal{S}'(\mathbb{R}) \rightarrow \mathcal{S}'(\mathbb{R})$, by

$$\langle M_H(\omega), g \rangle = \langle \omega, M_H(g) \rangle, \text{ for } \mu - a.e. \omega \text{ in } \Omega = \mathcal{S}'(\mathbb{R}). \quad (5.7)$$

Moreover, in view of remark 3.5, we may extend (5.7) to the case where g belongs to $L^2_H(\mathbb{R})$ by writing, for all g in $L^2_H(\mathbb{R})$ and almost every ω in Ω ,

$$\langle M_H(\omega), g \rangle := \lim_{n \rightarrow +\infty} \langle M_H(\omega), g_n \rangle = \lim_{n \rightarrow +\infty} \langle \omega, M_H(g_n) \rangle = \langle \omega, M_H(g) \rangle, \quad (5.8)$$

for every sequence $(g_n)_{n \in \mathbb{N}}$ of functions of $\mathcal{S}(\mathbb{R})$ which converges to g in the norm $\|\cdot\|_{L^2_H(\mathbb{R})}$. For all real t and integer k in \mathbb{N} , define the element of $L^2_{h(t)}(\mathbb{R})$:

$$d_k^{(t)} := M_{h(t)}^{-1}(e_k). \quad (5.9)$$

It is clear that, for all t in \mathbb{R} , the family of functions $(d_k^{(t)})_{k \in \mathbb{N}}$ forms an orthonormal basis of $L^2_{h(t)}(\mathbb{R})$. Let us now write the chaos decomposition of mBm. For almost every ω and every real t we get, using (3.14) and (5.8),

$$\begin{aligned} B^{(h)}(t)(\omega) &= \langle \omega, M_h(\mathbb{1}_{[0,t]}) \rangle = \langle \omega, M_{h(t)}(\mathbb{1}_{[0,t]}) \rangle = \langle M_{h(t)}(\omega), \mathbb{1}_{[0,t]} \rangle \\ &= \langle M_{h(t)}(\omega), \sum_{k=0}^{+\infty} \langle \mathbb{1}_{[0,t]}, d_k^{(t)} \rangle_{L^2_H(\mathbb{R})} d_k^{(t)} \rangle = \langle M_{h(t)}(\omega), \sum_{k=0}^{+\infty} \langle M_{h(t)}(\mathbb{1}_{[0,t]}), e_k \rangle_{L^2(\mathbb{R})} d_k^{(t)} \rangle \\ &= \sum_{k=0}^{+\infty} \langle M_{h(t)}(\mathbb{1}_{[0,t]}), e_k \rangle_{L^2(\mathbb{R})} \langle M_{h(t)}(\omega), d_k^{(t)} \rangle \\ &= \sum_{k=0}^{+\infty} \langle M_{h(t)}(\mathbb{1}_{[0,t]}), e_k \rangle_{L^2(\mathbb{R})} \langle \omega, M_{h(t)}(d_k^{(t)}) \rangle. \end{aligned}$$

We get finally:

$$a.s., \forall t \in \mathbb{R}, \quad B^{(h)}(t) = \sum_{k=0}^{+\infty} \left(\int_0^t M_{h(t)}(e_k)(s) ds \right) \langle \cdot, e_k \rangle. \quad (5.10)$$

We would then like to define multifractional white noise as the (\mathcal{S}^*) -derivative of $B^{(h)}$, which would be formally defined by:

$$W^{(h)}(t) := \sum_{k=0}^{+\infty} \left[\frac{d}{dt} \left(\int_0^t M_{h(t)}(e_k)(s) ds \right) \right] \langle \cdot, e_k \rangle, \quad (5.11)$$

assuming h is differentiable. The following theorem states that, for all real t , the right hand side of (5.11) does indeed belong to $(\mathcal{S})^*$ and is exactly the $(\mathcal{S})^*$ -derivative of $B^{(h)}$ at t .

Theorem-Definition 5.1. *Let $h : \mathbb{R} \rightarrow (0, 1)$ be a C^1 function such that the derivative function h' is bounded. The process $W^{(h)} := (W^{(h)}(t))_{t \in \mathbb{R}}$ defined by formula (5.11) is an $(\mathcal{S})^*$ -process which verifies the following equality in $(\mathcal{S})^*$:*

$$W^{(h)}(t) = \sum_{k=0}^{+\infty} M_{h(t)}(e_k)(t) \langle \cdot, e_k \rangle + h'(t) \sum_{k=0}^{+\infty} \left(\int_0^t \frac{\partial M_H}{\partial H}(e_k)(s) \Big|_{H=h(t)} ds \right) \langle \cdot, e_k \rangle. \quad (5.12)$$

Moreover the process $B^{(h)}$ is $(\mathcal{S})^*$ -differentiable on \mathbb{R} and verifies in $(\mathcal{S})^*$

$$\frac{dB^{(h)}}{dt}(t) = W^{(h)}(t) = \frac{d}{dt}[\Lambda(t, h(t))]. \quad (5.13)$$

In order to prove this theorem, we will need two lemmas.

Lemma 5.5. For H in $(0, 1)$ and f in $\mathcal{S}(\mathbb{R})$, define $g_f : \mathbb{R} \times (0, 1) \rightarrow \mathbb{R}$ by $g_f(t, H) := \int_0^t M_H(f)(x) dx$.

Then

(i) The function g_f belongs to $C^\infty(\mathbb{R} \times (0, 1), \mathbb{R})$,

(ii) $\forall x \in \mathbb{R}, \quad M_H(f)(x) = \alpha_H \int_0^{+\infty} u^{H-1/2} (f'(x+u) - f'(x-u)) du$.

where α_H has been defined by (3.10).

In particular, the function $(x, H) \mapsto M_H(f)(x)$ is differentiable on $\mathbb{R} \times (0, 1)$.

(iii) Assume that $h : \mathbb{R} \rightarrow (0, 1)$ is differentiable. Then, for any real t_0

$$\frac{d}{dt}[g_f(t, h(t))]|_{t=t_0} = M_{h(t_0)}(f)(t_0) + h'(t_0) \int_0^{t_0} \frac{\partial M_H}{\partial H}(f)(s)|_{H=h(t_0)} ds. \quad (5.14)$$

Proof. (i) Define μ_f on $\mathbb{R} \times (0, 1)$ by $\mu_f(t, H) := \int_{\mathbb{R}} (u-t)|u-t|^{H-3/2} f(u) du$, for f in $\mathcal{S}(\mathbb{R})$.

Using (3.9) we get, for all (t, H) in $\mathbb{R} \times (0, 1)$, the equality

$$g_f(t, H) = \alpha_H [\mu_f(t, H) - \mu_f(0, H)]. \quad (5.15)$$

A change of variables yields

$$\begin{aligned} \mu_f(x, H) &= - \int_{-\infty}^x |t-x|^{H-1/2} f(t) dt + \int_x^{+\infty} |t-x|^{H-1/2} f(t) dt \\ &= \int_0^{+\infty} u^{H-1/2} (f(x+u) - f(x-u)) du. \end{aligned} \quad (5.16)$$

Thanks to (5.15) and to the fact that the map $y \mapsto \alpha_y$ is C^∞ on $(0, 1)$, it is sufficient to show that the function μ_f belongs to $C^\infty(\mathbb{R} \times (0, 1))$. In view of applying the theorem of differentiation under the integral sign, define $j(x, H, u) := u^{H-1/2} (f(x+u) - f(x-u))$ for u in \mathbb{R}_+^* . Let n in \mathbb{N} and (α_1, α_2) in \mathbb{N}^2 such that $\alpha_1 + \alpha_2 = n$. For almost every u in \mathbb{R}_+^* , $(x, H) \mapsto j(x, H, u)$ is C^n on $\mathbb{R} \times (0, 1)$ with partial derivatives given by

$$\frac{\partial^n j}{\partial x^{\alpha_1} \partial H^{\alpha_2}}(x, H, u) = (\ln u)^{\alpha_2} u^{H-1/2} (f^{(\alpha_1)}(x+u) - f^{(\alpha_1)}(x-u)).$$

Fix (x_0, H_0) in $\mathbb{R} \times (0, 1)$. Let us show that μ_f is C^n in a neighbourhood of (x_0, H_0) . Choose (a, b) such that $a < x_0 < b$ and H_1, H_2 such that $0 < H_1 < H < H_2 < 1$. We have

$$\begin{aligned} \left| \frac{\partial^n j}{\partial x^{\alpha_1} \partial H^{\alpha_2}}(x, H, u) \right| &\leq |u|^{H_1-1/2} |\ln u|^{\alpha_2} \mathbf{1}_{\{0 < u < 1\}} \sup_{(x,u) \in [a,b] \times [0,1]} |f^{(\alpha_1)}(x \pm u)| \\ &\quad + |u| |\ln u|^{\alpha_2} |f^{(\alpha_1)}(x \pm u)| \mathbf{1}_{\{1 \leq |u|\}}, \end{aligned} \quad (5.17)$$

where $f^{(\alpha_1)}(x \pm u) := f^{(\alpha_1)}(x+u) - f^{(\alpha_1)}(x-u)$. A Taylor expansion shows that there exists a real D such that, for all (u, x) in $\mathbb{R} \times (a, b)$, $|u|^4 |f^{(\alpha_1)}(u \pm x)| \leq D$. As a consequence, there exists a real constant C such that, for almost every u in \mathbb{R}_+^* and every (x, H) in $[a, b] \times [H_1, H_2]$,

$$\left| \frac{\partial^n j}{\partial x^{\alpha_1} \partial H^{\alpha_2}}(x, H, u) \right| \leq C \left[|u|^{H_1-1/2} |\ln u|^{\alpha_2} \mathbf{1}_{\{0 < u < 1\}} + |\ln u|^{\alpha_2} \frac{1}{|u|^3} \mathbf{1}_{\{1 \leq |u|\}} \right]. \quad (5.18)$$

Since the right hand side of the previous inequality belongs to $L^1(\mathbb{R})$, the theorem of differentiation under the integral sign can be applied to conclude that the function μ_f is of class C^n in $[a, b] \times [H_1, H_2]$, for all integer n and all f in $\mathcal{S}(\mathbb{R})$. This entails (i).

(ii) (5.15) and (5.16) yield

$$M_H(f)(x) = \alpha_H \frac{\partial}{\partial x} [\mu_f(x, H)] = \alpha_H \int_0^{+\infty} u^{H-1/2} (f'(x+u) - f'(x-u)) du, \quad (5.19)$$

which establishes (ii) and the fact that $(x, H) \mapsto M_H(f)(x)$ belongs to $C^\infty(\mathbb{R} \times (0, 1))$.

(iii) For a differentiable function h , we have, for every real t_0 ,

$$\frac{d}{dt}[g_f(t, h(t))]\Big|_{t=t_0} = \frac{\partial g_f}{\partial t}(t_0, h(t_0)) + h'(t_0) \frac{\partial g_f}{\partial H}(t_0, h(t_0)).$$

(5.15), (5.19) and (3.20) show that, for every f in $\mathcal{S}(\mathbb{R})$,

$$\frac{\partial g_f}{\partial H}(t, H) = \int_0^t \frac{\partial}{\partial H} [M_H(f)(x)] dx = \int_0^t \frac{\partial M_H}{\partial H}(f)(x) dx.$$

and finally:

$$\frac{d}{dt}[g_f(t, h(t))]\Big|_{t=t_0} = M_{h(t_0)}(f)(t_0) + h'(t_0) \int_0^{t_0} \frac{\partial M_H}{\partial H}(f)(s)\Big|_{H=h(t_0)} ds.$$

□

Lemma 5.6. *The following inequalities hold:*

$$(i) \forall [a, b] \subset (0, 1), \exists \rho \in \mathbb{R}: \quad \forall k \in \mathbb{N}, \quad \sup_{(H, u) \in [a, b] \times \mathbb{R}} \left| \frac{\partial M_H}{\partial H}(e_k)(u) \right| \leq \rho (k+1)^{2/3} \ln(k+1).$$

$$(ii) \forall t \in \mathbb{R}, \forall r \in \mathbb{R}_+, \exists \widetilde{D}_t(r) \in \mathbb{R}, \forall k \in \mathbb{N}: \quad \sup_{u \in [t-r, t+r]} \left| \frac{d}{du}[g_{e_k}(u, h(u))] \right| \leq \widetilde{D}_t(r) (k+1)^{2/3}.$$

Proof. (i) Since $\mathcal{S}(\mathbb{R})$ is a subset of $\Gamma_H(\mathbb{R})$, (3.17) entails that $\widehat{\frac{\partial M_H}{\partial H}(e_k)}$ belongs to $L^1(\mathbb{R}) \cap L^2(\mathbb{R})$ for every k in \mathbb{N} . Furthermore $\widehat{e_k}(y) = (-i)^{k-1} \sqrt{2\pi} e_k(y)$ for every integer k in \mathbb{N}^* and for almost every real y (see lemma 1.1.3 p.5 of [37]). Thus, for every $H \in [a, b]$ and almost every $u \in \mathbb{R}$,

$$\begin{aligned} \frac{\partial M_H(e_k)}{\partial H}(u) &= \frac{1}{2\pi} \widehat{\frac{\partial M_H(e_k)}{\partial H}}(-u) = -\frac{1}{2\pi} \int_{\mathbb{R}} e^{iuy} (\beta_H + \ln |y|) \frac{\sqrt{2\pi}}{c_H} |y|^{1/2-H} \widehat{e_k}(y) dy \\ &= \frac{-\beta_H}{2\pi} \int_{\mathbb{R}} e^{iuy} \widehat{M_H(e_k)}(y) dy - \frac{1}{c_H} \int_{\mathbb{R}} e^{iuy} |y|^{1/2-H} (\ln |y|) (-i)^{k-1} e_k(y) dy \\ &= -\beta_H M_H(e_k)(u) + \underbrace{\frac{-(-i)^{k-1}}{c_H} \int_{\mathbb{R}} e^{iuy} |y|^{1/2-H} (\ln |y|) e_k(y) dy}_{=: V_k(u)}. \end{aligned} \quad (5.20)$$

Then, using (2.8), we see that there exists a family of real constants denoted $(\rho_i)_{1 \leq i \leq 11}$ such that we have, for every couple (H, k) in $[a, b] \times \mathbb{N}$ and almost every real u ,

$$\begin{aligned} |V_k(u)| &\leq \rho_1 \left[\int_{|y| \leq 2\sqrt{k+1}} |y|^{1/2-H} |\ln |y|| e_k(y) dy + \int_{|y| > 2\sqrt{k+1}} |y|^{1/2-H} (\ln |y|) |e_k(y)| dy \right] \\ &\leq \rho_2 \left[\underbrace{\frac{1}{(k+1)^{1/12}} \left(\int_0^{2\sqrt{k+1}} |\ln y| y^{1/2-H} dy \right)}_{:= I_1^{(k+1)}} + \underbrace{\left(\int_{2\sqrt{k+1}}^{+\infty} y^{1/2-H} (\ln y) e^{-\gamma y^2} dy \right)}_{:= I_2^{(k+1)}} \right]. \end{aligned} \quad (5.21)$$

An integration by parts yields

$$I_1^{(k)} = \rho_3 ((\rho_4 + \ln k)(1 + k^{3/4-H/2})) \leq \rho_5 k^{3/4-H/2} \ln k. \quad (5.22)$$

Using the change of variables $u = y\sqrt{\gamma}$, we get $I_2^{(k)} \leq \rho_6 \int_{2\sqrt{k\gamma}}^{+\infty} |u|^{1/2-H} (\ln u) e^{-u^2} du = \rho_6 J_{2\sqrt{k\gamma}}^{(1/2-H)}$ where $J_\delta^{(\alpha)} := \int_\delta^{+\infty} |u|^\alpha \ln u e^{-u^2} du$. When $\delta > 3e$, an integration by parts shows that $J_\delta^{(\alpha)} < \delta^{\alpha-1} e^{-\delta^2} \ln \delta$ for $0 < \alpha < 1/2$, and that $J_\delta^{(\alpha)} \leq \delta^\alpha \int_\delta^{+\infty} e^{-u^2} \ln u du$ for $-1/2 < \alpha < 0$. Hence we get

$$J_{2\sqrt{k\gamma}}^{(1/2-H)} \leq \rho_7 \begin{cases} k^{-1/4-H/2} \ln k & \text{for } 0 < H < 1/2 \\ k^{1/4-H/2} & \text{for } 1/2 < H < 1 \end{cases} \quad (5.23)$$

and we finally obtain

$$I_2^{(k)} \leq \rho_8 \frac{\ln k}{k^{H/2-1/4}}. \quad (5.24)$$

Using (5.20) to (5.24), item 3 of theorem 3.7 and the fact that both functions $H \mapsto \beta_H$ and $H \mapsto \frac{1}{c_H}$ are continuous on $[a, b]$ we get, for every k in \mathbb{N} ,

$$\begin{aligned} \sup_{(H,u) \in [a,b] \times \mathbb{R}} \left| \frac{\partial M_H}{\partial H}(e_k)(u) \right| &\leq \rho_9 (k+1)^{2/3} + \rho_{10} \sup_{H \in [a,b]} \left[((k+1)^{2/3-H/2} + (k+1)^{1/4-H/2}) \ln(k+1) \right] \\ &\leq \rho_{11} (k+1)^{2/3} \ln(k+1). \end{aligned} \quad (5.25)$$

(ii) Let $t \in \mathbb{R}$ and $r > 0$ be fixed and define $[a, b] := [\inf_{u \in [t-r, t+r]} h(u), \sup_{u \in [t-r, t+r]} h(u)]$. Using (5.14) we have, for every k in \mathbb{N} ,

$$\begin{aligned} \sup_{u \in [t-r, t+r]} \left| \frac{d}{du} [g_{e_k}(u, h(u))] \right| &\leq \sup_{(H,u) \in [a,b] \times \mathbb{R}} |M_H(e_k)(u)| \\ &\quad + (|t| + r) \sup_{u \in [t-r, t+r]} |h'(u)| \sup_{(H,u) \in [a,b] \times \mathbb{R}} \left| \frac{\partial M_H}{\partial H}(e_k)(u) \right|. \end{aligned}$$

The result then follows from (i) above and item 3 of theorem 3.7. \square

Remark 5.7. *In the sequel, we will only need the bounds of (i) and (ii) with $(k+1)$ in lieu of $(k+1)^{2/3}$.*

We may now proceed to the proof of theorem 5.1.

Proof of theorem 5.1. From equality (5.11) defining multifractional white noise and equality (5.14), we have formally

$$W^{(h)}(t) = \sum_{k=0}^{+\infty} M_{h(t)}(e_k)(t) \langle \cdot, e_k \rangle + h'(t) \sum_{k=0}^{+\infty} \int_0^t \frac{\partial M_H(e_k)}{\partial H}(s) \Big|_{H=h(t)} ds \langle \cdot, e_k \rangle. \quad (5.26)$$

In order to establish that $W^{(h)}(t)$ is well defined in $(\mathcal{S})^*$ and that equality (5.12) holds, it is sufficient to show that both members on the right hand side of the previous equality are in $(\mathcal{S})^*$.

For t in \mathbb{R} , definition (5.2) of fractional white noise shows that $\sum_{k=0}^{+\infty} M_{h(t)}(e_k)(t) \langle \cdot, e_k \rangle = W^{(h(t))}(t)$ and thus belongs to $(\mathcal{S})^*$.

Let us show that $V_H(t) := \sum_{k=0}^{+\infty} \int_0^t \frac{\partial M_H(e_k)}{\partial H}(s) ds \langle \cdot, e_k \rangle$ belongs to (L^2) . Using (3.19) we may write

$$\begin{aligned} \mathbb{E}[V_H^2(t)] &= \sum_{k=0}^{+\infty} \langle \frac{\partial M_H}{\partial H}(e_k), \mathbb{1}_{[0,t]} \rangle_{L^2(\mathbb{R})}^2 = \sum_{k=0}^{+\infty} \langle e_k, \frac{\partial M_H}{\partial H}(\mathbb{1}_{[0,t]}) \rangle_{L^2(\mathbb{R})}^2 \\ &= \|\frac{\partial M_H}{\partial H}(\mathbb{1}_{[0,t]})\|_{L^2(\mathbb{R})}^2 = \|\mathbb{1}_{[0,t]}\|_{\delta_H}^2 < +\infty. \end{aligned}$$

As a consequence, $W^{(h)}(t)$ is the sum of an $(\mathcal{S})^*$ process and an (L^2) process, and thus belongs to $(\mathcal{S})^*$. We are left with proving equality (5.13), *i.e.* that $W^{(h)}(t)$ is indeed the $(\mathcal{S})^*$ derivative of $B^{(h)}(t)$ for any real t .

Let $r \neq 0$ and $t \geq 0$ (the case $t < 0$ follows in a similar way). The equality $W^{(h)}(t) = W^{(h(t))}(t) + h'(t) V_{h(t)}(t)$ and remark 5.3 entail that $W^{(h)}(t)$ belongs to (\mathcal{S}_{-p}) as soon as $p \geq 2$. For such a p , one computes:

$$\begin{aligned} J_{p,r}(t) &:= \left\| \frac{B^{(h)}(t+r) - B^{(h)}(t)}{r} - W^{(h)}(t) \right\|_{-p}^2 \\ &= \left\| \sum_{k=0}^{+\infty} \left[\left(\frac{g_{e_k}(t+r, h(t+r)) - g_{e_k}(t, h(t))}{r} \right) - \frac{d}{dt} [g_{e_k}(t, h(t))] \right] \langle \cdot, e_k \rangle \right\|_{-p}^2 \\ &= \sum_{k=0}^{+\infty} \underbrace{\frac{1}{(2k+2)^{2p}} \left[\left(\frac{g_{e_k}(t+r, h(t+r)) - g_{e_k}(t, h(t))}{r} \right) - \frac{d}{dt} [g_{e_k}(t, h(t))] \right]^2}_{:= J_{p,r,k}(t)}. \end{aligned} \quad (5.27)$$

Using lemma 5.6 and the Mean-Value theorem we obtain, for r in $(-1/2, 1/2) \setminus \{0\}$:

$$\begin{aligned} J_{p,r,k}(t) &\leq \frac{1}{(2k+2)^{2p}} \left(2 \sup_{u \in [t-1/2, t+1/2]} \left| \frac{d}{du} [g_{e_k}(u, h(u))] \right| \right)^2 \leq 4 \tilde{D} \frac{(k+1)^2}{(2k+2)^{2p}} \\ &\leq \frac{\tilde{D}}{2^{2(p-1)}} \frac{1}{(k+1)^{2(p-1)}}, \end{aligned}$$

where $\tilde{D} := \tilde{D}_t(1/2)$. Since $J_{p,r,k}(t) \xrightarrow[r \rightarrow 0]{} 0$, equality (5.13) follows from the dominated convergence theorem.

Remark 5.8. In (ii) of lemma 5.6, the real constant $\tilde{D}_t(r)$ can be taken independent of t if the function $t \mapsto t h'(t)$ is bounded over \mathbb{R} .

We note that multifractional white noise is a sum of two terms: a fractional white noise that belong to (\mathcal{S}_{-p}) as soon as $p \geq 2$, and a "smooth" term which corresponds to the derivative in the "H" direction. This is a direct consequence of the fact that the fractional Brownian field $\Lambda(t, H)$ is not differentiable in the t direction (in the classical sense) but infinitely smooth in the H direction.

Proposition 5.9. For $p \geq 2$, the map $t \mapsto \|W^{(h)}(t)\|_{-p}$ is continuous.

Proof. By definition,

$$\|W^{(h)}(t)\|_{-p}^2 = \sum_{k=0}^{+\infty} \frac{(\frac{d}{dt} [g_{e_k}(t, h(t))])^2}{(2k+2)^{2p}}.$$

Using the estimate given in lemma 5.6 (ii), we see that $\|W^{(h)}(t)\|_{-p}^2$ is the sum of a series of continuous functions that converges normally on any compact. \square

5.3 Generalized functionals of mBm

In the next section, we will derive various Itô formulas for the integral with respect to mBm. It will be useful to obtain such formula for tempered distributions. In that view, we define generalized functionals of mBm as in [4].

Theorem-Definition 5.2. Let F be a tempered distribution. For t in \mathbb{R}_+^* , define

$$F(B^{(h)}(t)) := \frac{1}{\sqrt{2\pi t^{h(t)}}} \sum_{k=0}^{+\infty} (k!)^{-1} t^{-2kh(t)} \langle F, \xi_{(t, h(t), k)} \rangle = I_k \left((M_{h(t)}(\mathbb{1}_{[0,t]}))^{\otimes k} \right) \quad (5.28)$$

where the functions $\xi_{t,H,k}$ are defined for (x, H, k) in $\mathbb{R} \times (0, 1) \times \mathbb{N}$ by

$$\xi_{t,H,k}(x) := (\sqrt{2})^{-k} t^{kH} h_k(x/(\sqrt{2}t^H)) \exp\left\{-\frac{x^2}{2t^{2H}}\right\} = \pi^{1/4} (k!)^{1/2} t^{kH} \exp\left\{-\frac{x^2}{4t^{2H}}\right\} e_k(x/(\sqrt{2}t^H)). \quad (5.29)$$

Then for all t in \mathbb{R}_+^* , $F(B^{(h)}(t))$ is a Hida distribution, called generalized functional of $B^{(h)}(t)$.

Proof. This is an immediate consequence of [27] p.61-64 by taking $f := M_h(\mathbb{1}_{[0,t]})$. \square

Remark 5.10. As shown in [4], when $F = f$ is of function type, $F(B^{(h)}(t))$ coincides with $f(B^{(h)}(t))$.

The following theorem yields an estimate of $\|F(B^{(h)}(t))\|_{-p}^2$ which will be useful in the sequel.

Theorem 5.11. Let $h : \mathbb{R} \rightarrow [H_1, H_2] \subset (0, 1)$ be a continuous function, $B^{(h)}$ an mBm, $p \in \mathbb{N}$ and $F \in \mathcal{L}_p(\mathbb{R})$. Then there is a constant $C_p^{(H_1, H_2)}$, independent of F , such that

$$\forall t > 0, \quad \|F(B^{(h)}(t))\|_{-p}^2 \leq \max\{t^{-4ph(t)}, t^{4ph(t)}\} t^{-h(t)} C_p^{(H_1, H_2)} \|F\|_{-p}^2. \quad (5.30)$$

Proof. For $H \in (0, 1)$ and $p \in \mathbb{N}$, Theorem 3.3 p.92 of [4] ensures that there exists $C_p^{(H)}$ such that, $\forall t > 0$,

$$\|F(B^H(t))\|_{-p}^2 \leq \max\{t^{-4pH}, t^{4phH}\} t^{-H} C_p^{(H)} |F|_{-p}^2.$$

Now if H belongs to $[H_1, H_2]$, it is easy to show, by examining closely the iteration of (23) p.94 in [4], that one can choose a constant $C^{(H_1, H_2)}$ independent of H . We hence have

$$\forall t > 0, \quad \forall H \in [H_1, H_2], \quad \|F(B^H(t))\|_{-p}^2 \leq \max\{t^{-4pH}, t^{4phH}\} t^{-H} C_p^{(H_1, H_2)} |F|_{-p}^2. \quad (5.31)$$

For $t > 0$, one only needs to set $H = h(t)$ in (5.31) to get (5.30). \square

5.4 S-Transform of mBm and multifractional white noise

The following theorem makes explicit the S -transforms of mBm, multifractional white noise and generalized functionals of mBm.

We denote by γ the heat kernel density on $\mathbb{R}_+ \times \mathbb{R}$ i.e $\gamma(t, x) := \frac{1}{\sqrt{2\pi t}} \exp\{-\frac{x^2}{2t}\}$ if $t \neq 0$ and 0 if $t = 0$.

Theorem 5.12. *Let $h : \mathbb{R} \rightarrow (0, 1)$ be a C^1 function and $(B^{(h)}(t))_{t \in \mathbb{R}}$ (resp. $(W^{(h)}(t))_{t \in \mathbb{R}}$) be an mBm (resp. multifractional white noise). For $\eta \in \mathcal{S}(\mathbb{R})$ and $t \in \mathbb{R}$,*

$$(i) \quad S[B^{(h)}(t)](\eta) = \langle \eta, M_h(\mathbb{1}_{[0,t]}) \rangle_{L^2(\mathbb{R})} = g_\eta(t, h(t)), \text{ where } g_\eta \text{ has been defined in lemma 5.5.}$$

$$(ii) \quad S[W^{(h)}(t)](\eta) = \frac{d}{dt}[g_\eta(t, h(t))] = M_{h(t)}(\eta)(t) + h'(t) \int_0^t \frac{\partial M_H}{\partial H}(\eta)(s) \Big|_{H=h(t)} ds.$$

(iii) For $p \in \mathbb{N}$ and $F \in \mathcal{S}_{-p}(\mathbb{R})$,

$$S[F(B^{(h)}(t))](\eta) = \left\langle F, \gamma \left(t^{2h(t)}, \cdot - \int_0^t M_{h(t)}(\eta)(u) du \right) \right\rangle.$$

Furthermore, there exists a constant C_p , independent of F, t and η , such that

$$|S[F(B^{(h)}(t))](\eta)|^2 \leq \max\{t^{-4ph(t)}, t^{4ph(t)}\} t^{-h(t)} C_p |F|_{-p}^2 \exp\{|A^p \eta|_0^2\}. \quad (5.32)$$

Proof. (i) Thanks to (5.10) and lemma 2.5 we have, for every η in $\mathcal{S}(\mathbb{R})$ and t in \mathbb{R} ,

$$\begin{aligned} S(B^{(h)}(t))(\eta) &= \sum_{k=0}^{+\infty} \langle M_{h(t)}(\mathbb{1}_{[0,t]}), e_k \rangle_{L^2(\mathbb{R})} \langle \eta, e_k \rangle_{L^2(\mathbb{R})} = \langle M_{h(t)}(\mathbb{1}_{[0,t]}), \eta \rangle_{L^2(\mathbb{R})} \\ &= \langle \mathbb{1}_{[0,t]}, M_{h(t)}(\eta) \rangle_{L^2(\mathbb{R})} = g_\eta(t, h(t)). \end{aligned}$$

(ii) This is a straightforward consequence of lemma 2.8, (5.13) and (i).

(iii) The first equality results from theorem 7.3 p.63 in [27] with $f = M_{h(t)}(\mathbb{1}_{[0,t]})$ and from the equality (i). Equality (5.32) results from (5.30) as in theorem 3.8 p.95 of [4]. \square

Remark 5.13. *Using lemma 2.5 and (5.11) we may also write:*

$$\forall (t, \eta) \in \mathbb{R} \times \mathcal{S}(\mathbb{R}), \quad S(W^{(h)}(t))(\eta) = \sum_{k=0}^{+\infty} \frac{d}{dt}[g_{e_k}(t, h(t))] \langle \eta, e_k \rangle_{L^2(\mathbb{R})}. \quad (5.33)$$

5.5 The multifractional Wick-Itô integral

We are now able to define the Multifractional Wick-Itô integral, in a way analogous to the definition of the fractional Wick-Itô integral. *In the sequel of this work, we will always assume that h is a C^1 function on \mathbb{R} with bounded derivative.*

Definition 5.1 (The multifractional Wick-Itô integral). *Let $Y : \mathbb{R} \rightarrow (\mathcal{S})^*$ be a process such that the process $t \mapsto Y(t) \diamond W^{(h)}(t)$ is $(\mathcal{S})^*$ -integrable on \mathbb{R} . We then say that the process Y is $dB^{(h)}$ -integrable on \mathbb{R} or integrable on \mathbb{R} with respect to mBm $B^{(h)}$. The integral of Y with respect to $B^{(h)}$ is defined by*

$$\int_{\mathbb{R}} Y(s) dB^{(h)}(s) := \int_{\mathbb{R}} Y(s) \diamond W^{(h)}(s) ds. \quad (5.34)$$

For a Borel set I of \mathbb{R} , define $\int_I Y(s) dB^{(h)}(s) := \int_{\mathbb{R}} \mathbf{1}_I(s) Y(s) dB^{(h)}(s)$.

When the function h is constant, the multifractional Wick-Itô integral coincides with the fractional Itô integral defined in [15], [6], [4] and [5]. In particular, when the function h is identically $1/2$, (5.34) is nothing but the classical Itô integral with respect to Brownian motion, provided of course Y is Itô-integrable. The multifractional Wick-Itô integral verifies the following properties:

Proposition 5.14. (i) *Let (a, b) in \mathbb{R}^2 , $a < b$. Then $\int_a^b dB^{(h)}(u) = B^{(h)}(b) - B^{(h)}(a)$ almost surely.*

(ii) *Let $X : I \rightarrow (\mathcal{S}^*)$ be a $dB^{(h)}$ -integrable process over I , a Borel subset of \mathbb{R} . Assume $\int_I X(s) dB^{(h)}(s)$ belongs to (L^2) . Then $\mathbb{E}[\int_I X(s) dB^{(h)}(s)] = 0$.*

Proof. (i) From (ii) of theorem 5.12, $t \mapsto S(\mathbf{1}_{[a,b]}(t) W^{(h)}(t))(\eta)$ is measurable on \mathbb{R} for any η in $\mathcal{S}(\mathbb{R})$. Moreover, for any integer $p_0 \geq 2$, we have

$$|S(\mathbf{1}_{[a,b]}(t) W^{(h)}(t))(\eta)| \leq \|W^{(h)}(t)\|_{-p_0} e^{\frac{1}{2}|\eta|_{p_0}^2}$$

thanks to lemma 2.5. By proposition 5.9, $t \mapsto \|W^{(h)}(t)\|_{-p_0}$ is continuous thus integrable on $[a, b]$. Theorem 2.9 then entails that $t \mapsto \mathbf{1}_{[a,b]}(t) W^{(h)}(t)$ is (\mathcal{S}^*) -integrable over \mathbb{R} . It is easily seen that the S-transforms of $\int_a^b dB^{(h)}(u)$ and $B^{(h)}(b) - B^{(h)}(a)$ coincide. The result then follows from the injectivity of the S-transform.

(ii) One computes:

$$S\left(\int_I X(s) dB^{(h)}(s)\right)(0) = \int_I S(X(s))(0) \overbrace{S(W^{(h)}(s))(0)}^{=\frac{d}{ds}[g_0(s, h(s))]=0} ds = 0.$$

Now, when $\int_I X(s) dB^{(h)}(s)$ belongs to (L^2) , $\mathbb{E}[\int_I X(s) dB^{(h)}(s)] = S(\int_I X(s) dB^{(h)}(s))(0)$. \square

Theorem 5.15. *Let I be a compact subset of \mathbb{R} and $X : t \mapsto X(t)$ be a process from I to (L^2) such that $t \mapsto S(X(t))(\eta)$ is measurable on I for all η in $\mathcal{S}(\mathbb{R})$ and $t \mapsto \|X(t)\|_0$ belongs to $L^1(I)$. Then X is $dB^{(h)}$ -integrable on I and there exist a natural integer q and a constant C_I such that,*

$$\left\| \int_I X(t) dB^{(h)}(t) \right\|_{-q} \leq C_I \int_I \|X(t)\|_0 dt. \quad (5.35)$$

Proof. For $\eta \in \mathcal{S}(\mathbb{R})$, the measurability on I of $t \mapsto S(X(t) \diamond W^{(h)}(t))(\eta)$ is clear since $S(X(t) \diamond W^{(h)}(t))(\eta) = S(X(t))(\eta) \frac{d}{dt}[g_\eta(t, h(t))]$. By lemma 2.6, we have, for any integer $q \geq 2$,

$$|S(X(t) \diamond W^{(h)}(t))(\eta)| \leq \|X(t)\|_0 \|W^{(h)}(t)\|_{-q} e^{|\eta|_q^2}$$

for every t in I . Since $t \mapsto \|W^{(h)}(t)\|_{-q}$ is continuous by proposition 5.9 and $t \mapsto \|X(t)\|_0$ belongs to $L^1(I)$ by assumption, the result follows from theorem 2.9. We refer to theorem 13.5 of [27] for the upper bound. \square

Remark 5.16. *One can show, using appendix A, that inequality (5.35) is true for every integer $q \geq 2$.*

It is of interest to have also a criterion of integrability for generalized functionals of mBm. In that view, we set up the following notation: for $p \in \mathbb{N}$, $0 < a < b$, we consider a map $F : [a, b] \rightarrow \mathcal{S}_{-p}(\mathbb{R})$ (hence $F(t)$ is a tempered distribution for all t). We then define $F(t, B^{(h)}(t)) := F(t)(B^{(h)}(t))$. Recall the following theorem (see [10], lemma 1 and 2 p.73-74):

Theorem 5.17. Let I be an interval of \mathbb{R} , $t \mapsto F(t)$ be a map from I into $\mathcal{S}_{-p}(\mathbb{R})$, $t \mapsto \varphi(t, \cdot)$ be a map from I into $\mathcal{S}(\mathbb{R})$ and $t_0 \in I$. If both maps $t \mapsto F(t)$ and $t \mapsto \varphi(t, \cdot)$ are continuous (respectively differentiable) at t_0 , then the function $t \mapsto \langle F(t), \varphi(t, \cdot) \rangle$ is continuous (respectively differentiable) at t_0 .

Theorem 5.18. Let $p \in \mathbb{N}$, $0 < a < b$ and let $F : [a, b] \rightarrow \mathcal{S}_{-p}(\mathbb{R})$ be a continuous map. Then the stochastic distribution process $F(t, B^{(h)}(t))$ is both $(\mathcal{S})^*$ -integrable and $dB^{(h)}$ -integrable over $[a, b]$.

Proof. We shall apply theorem 2.9.

The measurability of $t \mapsto S[F(t, B^{(h)}(t))](\eta)$ results from (iii) of theorem 5.12, the continuity of the two maps $t \mapsto F(t)$ and $t \mapsto \gamma(t^{2h(t)}, \cdot - \int_0^t M_{h(t)}(\eta)(u) du)$ and theorem 5.17.

Since h is bounded on $[a, b]$, lemma 2.5 and (5.30) yield

$$\begin{aligned} |S[F(t, B^{(h)}(t))](\eta)| &\leq \max\{t^{-2ph(t)}, t^{2h(t)}\} t^{-h(t)/2} \sqrt{C_p^{(H_1, H_2)}} \max_{s \in [a, b]} |F(s)|_{-p} \exp\left\{\frac{1}{2}|A^p \eta|_0^2\right\} \\ &\leq \left(\left(\frac{1}{a}\right)^{2pH_2} + b^{2pH_2}\right) \left(\left(\frac{1}{a}\right)^{\frac{H_2}{2}} + b^{\frac{H_2}{2}}\right) \sqrt{C_p^{(H_1, H_2)}} \max_{s \in [a, b]} |F(s)|_{-p} \exp\left\{\frac{1}{2}|A^p \eta|_0^2\right\}, \end{aligned} \quad (5.36)$$

where $H_1 := \min_{s \in [a, b]} h(s)$ and $H_2 := \max_{s \in [a, b]} h(s)$. This yields the second condition of theorem 2.9 and shows

that $F(t, B^{(h)}(t))$ is $(\mathcal{S})^*$ -integrable over $[a, b]$.

For $dB^{(h)}$ -integrability, we first note that, by theorem 5.12 (ii),

$$S[F(t, B^{(h)}(t)) \diamond W^{(h)}(t)](\eta) = S[F(t, B^{(h)}(t))](\eta) \frac{d}{dt} [g_\eta(t, h(t))].$$

Since the function $t \mapsto \frac{d}{dt} [g_\eta(t, h(t))]$ is continuous (by lemma 5.5), the measurability of $t \mapsto S[F(t, B^{(h)}(t)) \diamond W^{(h)}(t)](\eta)$ for every function η in $\mathcal{S}(\mathbb{R})$ follows.

Moreover, for every integer $p_0 \geq \max\{p, 2\}$, $F(t, B^{(h)}(t))$ and $W^{(h)}(t)$ belong to (\mathcal{S}_{-p_0}) for all t in $[a, b]$. Using lemma 2.6 and (5.30), we may write, for all t in $[a, b]$,

$$\begin{aligned} |S[F(t, B^{(h)}(t)) \diamond W^{(h)}(t)](\eta)| &\leq \|F(t, B^{(h)}(t))\|_{-p_0} \|W^{(h)}(t)\|_{-p_0} \exp\{|\eta|_{p_0}^2\} \\ &\leq K \exp\{|\eta|_{p_0}^2\}, \end{aligned} \quad (5.37)$$

where $K := \sup_{t \in [a, b]} \|W^{(h)}(t)\|_{-p_0} \left(\left(\frac{1}{a}\right)^{2p_0H_2} + b^{2p_0H_2}\right) \left(\left(\frac{1}{a}\right)^{\frac{H_2}{2}} + b^{\frac{H_2}{2}}\right) \sqrt{C_{p_0}^{(H_1, H_2)}} \max_{s \in [a, b]} |F(s)|_{-p_0}$.

Theorem 2.9 applies again and shows that $t \mapsto F(t, B^{(h)}(t)) \diamond W^{(h)}(t)$ is integrable over $[a, b]$. \square

Remark 5.19. Recall that a function $f : \mathbb{R} \rightarrow \mathbb{R}$ is said to be of polynomial growth if there is an integer m in \mathbb{N} and a constant C such that for all $x \in \mathbb{R}$, $|f(x)| \leq C(1 + |x|^m)$. The previous theorem entails in particular that both quantities $\int_a^b f(B^{(h)}(t)) dt$ and $\int_a^b f(B^{(h)}(t)) dB^{(h)}(t)$ exist in $(\mathcal{S})^*$ if f is a function of polynomial growth.

Example 5.20 (Computation of $\int_0^T B^{(h)}(t) dB^{(h)}(t)$). Let $T > 0$ fixed. Then

$$I := \int_0^T B^{(h)}(t) dB^{(h)}(t) = \int_0^T W^{(h)}(t) \diamond B^{(h)}(t) dt = \int_0^T \frac{dB^{(h)}(t)}{dt} \diamond B^{(h)}(t) dt. \quad (5.38)$$

Let us prove that the last quantity is equal to $\frac{1}{2}B^{(h)}(T)^{\diamond 2} := \frac{1}{2}(B^{(h)}(T) \diamond B^{(h)}(T)) = \frac{1}{2}(B^{(h)}(T)^2 - T^{2h(T)})$ (see remark 2.7). It is sufficient to compute the S -transforms of both sides of the equality. For η in $\mathcal{S}(\mathbb{R})$,

$$\begin{aligned} S\left(\int_0^T B^{(h)}(t) dB^{(h)}(t)\right)(\eta) &= \int_0^T S(B^{(h)}(t))(\eta) S(W^{(h)}(t))(\eta) dt = \int_0^T g_\eta(t, h(t)) \frac{d}{dt} [g_\eta(t, h(t))] dt \\ &= \frac{1}{2} g_\eta^2(T, h(T)) = \frac{1}{2} (S(B^{(h)}(T))(\eta))^2 = \frac{1}{2} S(B^{(h)}(T) \diamond B^{(h)}(T))(\eta) \\ &= S\left(\frac{1}{2}(B^{(h)}(T)^2 - T^{2h(T)})\right)(\eta). \end{aligned} \quad (5.39)$$

To end this section, we present a simple but classical stochastic differential equation in the frame of mBm.

Example 5.21 (The multifractional Wick exponential). *Following [15] formula (4.8) and [6] example 3.6, let us consider the multifractional stochastic differential equation*

$$\begin{cases} dX(t) = \alpha(t)X(t)dt + \beta(t)X(t)dB^{(h)}(t) \\ X(0) \in (\mathcal{S}^*), \end{cases} \quad (5.40)$$

where t belongs to \mathbb{R}_+ and where $\alpha : \mathbb{R} \rightarrow \mathbb{R}$ and $\beta : \mathbb{R} \rightarrow \mathbb{R}$ are two deterministic continuous functions. (5.40) is a shorthand notation for

$$X(t) = X(0) + \int_0^t \alpha(s) X(s) ds + \int_0^t \beta(s) X(s) dB^{(h)}(s), \quad (5.41)$$

where the previous equality holds in $(\mathcal{S})^*$. Rewrite the previous equation in terms of derivatives in $(\mathcal{S})^*$ as:

$$\begin{cases} \frac{dX}{dt}(t) = \alpha(t) X(t) + \beta(t) X(t) \diamond W^{(h)}(t) = (\alpha(t) + \beta(t)W^{(h)}(t)) \diamond X(t) \\ X(0) \in (\mathcal{S}^*). \end{cases} \quad (5.42)$$

We thus are looking for an (\mathcal{S}^*) -process, noted Z , defined on \mathbb{R}_+ such that Z is differentiable on \mathbb{R}_+ and verifies equation (5.42) in (\mathcal{S}^*) . As in [6], it is easy to guess the solution of (5.42) if we replace Wick products \diamond by ordinary products. Once we have a solution of (5.42), we replace ordinary products by Wick products. This heuristic reasoning leads to defining the process $Z := (Z(t))_{t \in \mathbb{R}_+}$ by

$$Z(t) := X(0) \diamond \exp^\diamond \left(\int_0^t \alpha(s) ds + \int_0^t \beta(s) dB^{(h)}(s) \right), \quad t \in \mathbb{R}_+, \quad (5.43)$$

where \exp^\diamond has been defined in section 2.4.

Theorem 5.22. *The process Z defined by (5.43) is the unique solution in (\mathcal{S}^*) of (5.42).*

Proof. This is a straightforward application of theorem 3.1.2 in [24]. □

Remark 5.23. (i) [24] uses the Hermite transform in order to establish the theorem. However it is possible to start from (5.41), take S -transforms of both sides and solve the resulting ordinary stochastic differential equation.

(ii) Equation (5.40) may be solved with other assumptions on α, β . We refer to [29] for more on stochastic differential equations driven by mBm.

Remark 5.24. *In particular when $X(0)$ is deterministic, equal to x , $\alpha(\cdot) \equiv \alpha$ and $\beta(\cdot) \equiv \beta$ are constant functions, the solution X of (5.41) reads*

$$X(t) = x \exp \left\{ \beta B^{(h)}(t) + \alpha t - \frac{1}{2} \beta^2 t^{2h(t)} \right\}, \quad t \in \mathbb{R}_+, \quad (5.44)$$

which is analogous to formula (3.31) given in [6] in the case of the fractional Brownian motion.

5.6 Multifractional Wick-Itô integral of deterministic elements versus Wiener integral with respect to mBm

In section 4.2, we have defined a Wiener integral with respect to mBm. It is natural to check whether this definition is consistent with the multifractional Wick-Ito integral when the integrand is deterministic. More precisely, we wish to verify that $\int_{\mathbb{R}} f(s) \diamond W^{(h)}(s) ds = \mathcal{J}^h(f)$ for all functions f such that both members of the previous equality exist and that the left-hand side member is in (L^2) . In that view we first prove the following theorem.

Theorem 5.25. Let $f : \mathbb{R} \rightarrow \mathbb{R}$ be a deterministic function which belongs to $L^1_{loc}(\mathbb{R})$. Let $Z := (Z(t))_{t \in \mathbb{R}}$ be the process defined on \mathbb{R} by $Z(t) := \int_0^t f(s)dB^{(h)}(s)$. Then Z is an (\mathcal{S}^*) -process which verifies the following equality in (\mathcal{S}^*)

$$\int_0^t f(s)dB^{(h)}(s) = \sum_{k=0}^{+\infty} \left(\int_0^t f(s) \frac{d}{ds} [g_{e_k}(s, h(s))] ds \right) < \cdot, e_k >. \quad (5.45)$$

Moreover Z is a (centered) Gaussian process if and only if $\sum_{k=0}^{+\infty} \left(\int_0^t f(s) \frac{d}{ds} [g_{e_k}(s, h(s))] ds \right)^2 < +\infty$, for all t . In this case,

$$Z(t) = \int_0^t f(s)dB^{(h)}(s) \rightsquigarrow \mathcal{N} \left(0, \sum_{k=0}^{+\infty} \left(\int_0^t f(s) \frac{d}{ds} [g_{e_k}(s, h(s))] ds \right)^2 \right), \quad \forall t \in \mathbb{R}. \quad (5.46)$$

In particular, the process Z is Gaussian when the function f belongs to $C^1(\mathbb{R}, \mathbb{R})$ and is such that $\sup_{t \in \mathbb{R}} |f'(t)| < +\infty$.

Proof. We treat only the case $t \in \mathbb{R}_+^*$. The other case follows similarly. Let f be in $L^1_{loc}(\mathbb{R})$. In order to show (5.45) let us establish **a)**, **b)** and **c)** below.

a) $s \mapsto f(s) \diamond W^{(h)}(s)$ is (\mathcal{S}^*) -integrable over $[0, t]$.

Let $\eta \in \mathcal{S}(\mathbb{R})$ and s in $[0, t]$, using lemma 2.5, we get:

$$|S(f(s) \diamond W^{(h)}(s))(\eta)| = |f(s)| \left| S(W^{(h)}(s))(\eta) \right| \leq \overbrace{|f(s)| \|W^{(h)}(s)\|_{-p_0}}{=:L(s)} e^{\frac{1}{2}|\eta|_{p_0}^2}$$

for s in $[0, t]$ and for $p_0 \geq 2$. Since L is the product of a continuous function and a function of $L^1_{loc}(\mathbb{R})$, **a)** is a consequence of theorem 2.9.

b) $\Psi_f := \sum_{k=0}^{+\infty} \left(\int_0^t f(s) \frac{d}{ds} [g_{e_k}(s, h(s))] ds \right) < \cdot, e_k >$ belongs to (\mathcal{S}_{-p_0}) as soon as $p_0 \geq 2$.

Lemma 5.6 entails that there exists a real D such that, for every $p_0 \geq 2$, we have

$$\begin{aligned} \|\Psi_f\|_{-p_0}^2 &= \sum_{k=0}^{+\infty} \left(\int_0^t f(s) \frac{d}{ds} [g_{e_k}(s, h(s))] ds \right)^2 \leq \|f\|_{L^1([0, t])}^2 \sum_{k=0}^{+\infty} \frac{\sup_{s \in [0, t]} \left| \frac{d}{ds} [g_{e_k}(s, h(s))] \right|^2}{(2k+2)^{2p_0}} \\ &\leq D^2 \|f\|_{L^1([0, t])}^2 \sum_{k=0}^{+\infty} \frac{(k+1)^2}{(2k+2)^{2p_0}} < +\infty. \end{aligned}$$

c) $\int_0^t f(s)dB^{(h)}(s) = \sum_{k=0}^{+\infty} \left(\int_0^t f(s) \frac{d}{ds} [g_{e_k}(s, h(s))] ds \right) < \cdot, e_k >$ in (\mathcal{S}^*) .

Denote $\Phi_f := \int_0^t f(s)dB^{(h)}(s) = \int_0^t \left(\sum_{k=0}^{+\infty} f(s) \frac{d}{ds} [g_{e_k}(s, h(s))] < \cdot, e_k > \right) ds$ and define the (\mathcal{S}^*) -process $\tau : [0, t] \rightarrow (\mathcal{S}^*)$ by $\tau(s) := \sum_{k=0}^{+\infty} f(s) \frac{d}{ds} [g_{e_k}(s, h(s))] < \cdot, e_k >$. Moreover, for N in \mathbb{N}^* , define on $[0, t]$,

$\tau_N : s \mapsto \tau_N(s) := \sum_{k=0}^N f(s) \frac{d}{ds} [g_{e_k}(s, h(s))] < \cdot, e_k >$. Obviously we have, in (\mathcal{S}^*) , $\Phi_f = \int_0^t \tau(s)ds$, $\Psi_f = \lim_{N \rightarrow +\infty} \int_0^t \tau_N(s) ds$. It then remains to show that $\Phi_f = \lim_{N \rightarrow +\infty} \int_0^t \tau_N(s) ds$ in (\mathcal{S}^*) . Let us use, for this purpose, theorem A.2. Let p_0 be an integer greater than or equal to 2. It is easily seen that τ_n and τ are weakly measurable on $[0, t]$ for every n in \mathbb{N} (see definition A.1) and that, $\tau_n(s)$ and $\tau(s)$ belongs to (\mathcal{S}_{-p_0}) for every n in \mathbb{N} and s in $[0, t]$. Moreover, both functions $s \mapsto \|\tau_n(s)\|_{-p_0}$ and $s \mapsto \|\tau(s)\|_{-p_0}$

belong to $L^1([0, t], du)$ since $\|\tau_n(s)\|_{-p_0} \leq \|\tau(s)\|_{-p_0} \leq |f(s)| D \sqrt{\sum_{k=0}^{+\infty} (2k+2)^{-2(p_0-1)}}$ for a certain D given by lemma 5.6 (ii). We hence have shown that both functions $\tau_n(\cdot)$ and $\tau(\cdot)$ are Bochner integrable on $[0, t]$. Besides, for every (n, m) in \mathbb{N}^2 with $n \geq m$, we have

$$\begin{aligned}
\int_0^t \|\tau_n(s) - \tau_m(s)\|_{-p_0} ds &= \int_0^t \left\| \sum_{k=m+1}^n f(s) \frac{d}{ds} [g_{e_k}(s, h(s))] \langle \cdot, e_k \rangle \right\|_{-p_0} ds \\
&\leq \underbrace{\int_0^t \left\| \sum_{k=m+1}^{+\infty} f(s) \frac{d}{ds} [g_{e_k}(s, h(s))] \langle \cdot, e_k \rangle \right\|_{-p_0} ds}_{= \int_0^t \|\tau(s) - \tau_m(s)\|_{-p_0} ds} \leq M \left(\sum_{k=m+1}^{+\infty} \frac{\sup_{s \in [0, t]} \left| \frac{d}{ds} [g_{e_k}(s, h(s))] \right|^2}{(2k+2)^{2p_0}} \right)^{1/2} \\
&\leq M D \left(\sum_{k=m+1}^{+\infty} \frac{1}{(2k+2)^{2(p_0-1)}} \right)^{1/2} \xrightarrow{(n, m) \rightarrow (+\infty, +\infty)} 0,
\end{aligned}$$

where $M := \|f\|_{L^1([0, t])}$ and D is again given by (ii) of lemma 5.6. Theorem A.2 then applies and allows to write that $\lim_{N \rightarrow +\infty} \int_0^t \tau_N(s) ds = \int_0^t \tau(s) ds$ in (\mathcal{S}^*) . We hence have shown that $\Psi_f = \lim_{N \rightarrow +\infty} \int_0^t \tau_N(s) ds = \int_0^t \tau(s) ds = \Phi_f$ in (\mathcal{S}^*) . This ends the proof of **c**) and establishes formula (5.45).

If $\sum_{k=0}^{+\infty} \left(\int_0^t f(s) \frac{d}{ds} [g_{e_k}(s, h(s))] ds \right)^2 < +\infty$, for all t , then $Z(t)$ is the (L^2) -limit of a sequence of independent Gaussian variables. Formula (5.46) is then obvious. When f is of class C^1 and such that $\sup_{t \in \mathbb{R}} |f'(t)| < +\infty$, an integration by parts yields that $\sum_{k=0}^{+\infty} \left(\int_0^t f(s) \frac{d}{ds} [g_{e_k}(s, h(s))] ds \right)^2 < +\infty$. \square

It is easy to check that definitions 4.1 and 5.1 coincide on the space $\mathcal{E}(\mathbb{R})$. Indeed for $f := \sum_{k=1}^n \alpha_k \mathbb{1}_{[0, t_k]}$ in $\mathcal{E}(\mathbb{R})$, remark 4.4 and equality (5.13) entail that $\mathcal{J}^h(f) = \sum_{k=1}^n \alpha_k B_{t_k}^{(h)}$ almost surely. According to (i) of proposition 5.14, we have the equality $\int_{\mathbb{R}} f(s) dB^{(h)}(s) ds = \sum_{k=1}^n \alpha_k \int_{\mathbb{R}} \mathbb{1}_{[0, t_k]}(s) W^{(h)}(s) ds = \sum_{k=1}^n \alpha_k B_{t_k}^{(h)}$ almost surely. This implies in particular that $\|\int_{\mathbb{R}} f(s) dB^{(h)}(s) ds\|_{(L^2)} = \|f\|_h$ for all f in $\mathcal{E}(\mathbb{R})$ since we have $\|\mathcal{J}^h(f)\|_{(L^2)} = \|f\|_h$ for such f . Since Wiener integrals with respect to standard Brownian motion are the elements of the set $\{\int_{\mathbb{R}} f(s) dB(s), f \in L^2(\mathbb{R})\} = \overline{\{\int_{\mathbb{R}} f(s) dB(s), f \in \mathcal{E}(\mathbb{R})\}}^{(L^2)}$, it seems natural to give the following definition.

Definition 5.2. (Wiener integral with respect to mBm)

For an mBm $B^{(h)}$, define the Gaussian space Θ_h by

$$\Theta_h := \overline{\left\{ \int_{\mathbb{R}} f(s) dB^{(h)}(s), f \in \mathcal{E}(\mathbb{R}) \right\}}^{(L^2)}.$$

We call Wiener integral with respect to $B^{(h)}$ the elements of Θ_h .

Remark 5.26. (i) Obviously, $\Theta_h = \overline{\left\{ \sum_{k=0}^{+\infty} \left(\int_{\mathbb{R}} f(s) \frac{d}{ds} [g_{e_k}(s, h(s))] ds \right) \langle \cdot, e_k \rangle : f \in \mathcal{E}(\mathbb{R}) \right\}}^{(L^2)}$. Thanks to definition 4.1, theorem 5.25 and the fact that $\mathcal{J}^h(f) = \int_{\mathbb{R}} f(s) dB^{(h)}(s)$ on $\mathcal{E}(\mathbb{R})$, we have

$$\Theta_h = \{ \mathcal{J}^h(u) : u \in \overline{\mathcal{E}(\mathbb{R})}^{\langle \cdot, \cdot \rangle_h} \} \quad (5.47)$$

In other words, the set of Wiener integrals in the sense of definition 4.1 and 5.2 coincide.

(ii) When h is a constant function equal to H we find that $\Theta_h = \Theta_H = \{ \langle \cdot, M_H(f) \rangle : f \in L_H^2(\mathbb{R}) \}$ since $\overline{\mathcal{E}(\mathbb{R})}^{\langle \cdot, \cdot \rangle_h} = \overline{\mathcal{E}(\mathbb{R})}^{\langle \cdot, \cdot \rangle_H} = L_H^2(\mathbb{R})$. This is exactly what is expected in view of (4.1).

In fact we can be a little more precise in the case of fBm. Let $\text{supp}(\mathcal{K})$ denote the set of measurable functions $f : \mathbb{R} \rightarrow \mathbb{R}$ with compact support.

Proposition 5.27. Let $H \in (0, 1)$. Then:

- (i) Let $f : \mathbb{R} \mapsto \mathbb{R}$ be in $L_{loc}^1(\mathbb{R}) \cap L_H^2(\mathbb{R})$. Then $\int_{\mathbb{R}} f(s) dB^{(H)}(s)$ belongs to (L^2) if and only if $\int_{\mathbb{R}} f(s) dB^{(H)}(s) = \mathcal{J}^H(f)$.

(ii) $L^1_{loc}(\mathbb{R}) \cap L^2_H(\mathbb{R}) \cap \text{supp}(\mathcal{K}) \subset \{f : \mathbb{R} \rightarrow \mathbb{R} : \int_{\mathbb{R}} f(s) dB^{(H)}(s) \in (L^2)\}$.

(iii) For μ -almost every f in $L^1_{loc}(\mathbb{R}) \cap \text{supp}(\mathcal{K}) \cap \{f : \mathbb{R} \rightarrow \mathbb{R} : \int_{\mathbb{R}} f(s) dB^{(H)}(s) \in (L^2)\}$, f is in $L^2_H(\mathbb{R})$ and verifies $\int_{\mathbb{R}} f(s) dB^{(H)}(s) = \mathcal{J}^H(f)$.

Proof. (i) Let $f \in L^1_{loc}(\mathbb{R}) \cap L^2_H(\mathbb{R})$ and define $\Phi_f := \int_{\mathbb{R}} f(s) dB^{(H)}(s)$. By theorem 5.25, $\Phi_f = \sum_{k=0}^{+\infty} \langle f, M_H(e_k) \rangle \langle \cdot, e_k \rangle$ where the equality holds in $(\mathcal{S})^*$. If we assume that Φ_f belongs to (L^2) , then the equality is valid in (L^2) . Besides, since f belongs to $L^1_{loc}(\mathbb{R}) \cap L^2_H(\mathbb{R})$ we have, according to theorem 3.7, $\mathcal{J}^H(f) = \langle \cdot, M_H(f) \rangle = \sum_{k=0}^{+\infty} \langle M_H(f), e_k \rangle_{L^2(\mathbb{R})} \langle \cdot, e_k \rangle = \sum_{k=0}^{+\infty} \langle f, M_H(e_k) \rangle \langle \cdot, e_k \rangle$ in (L^2) . The converse part is obvious since $\int_{\mathbb{R}} f(s) dB^{(H)}(s) = \mathcal{J}^H(f)$ entails that $\int_{\mathbb{R}} f(s) dB^{(H)}(s)$ belongs to (L^2) .

(ii) Since f is in $L^1_{loc}(\mathbb{R}) \cap \text{supp}(\mathcal{K})$ theorem 5.25 entails that $\int_{\mathbb{R}} f(s) dB^{(H)}(s) = \sum_{k=0}^{+\infty} \left(\int_{\mathbb{R}} f(s) M_H(e_k)(s) ds \right) \langle \cdot, e_k \rangle = \sum_{k=0}^{+\infty} \langle f, M_H(e_k) \rangle \langle \cdot, e_k \rangle$ in $(\mathcal{S})^*$ (one only needs to replace $\mathbb{1}_{[0,t]}$ by $\mathbb{1}_{\text{supp}(f)}$, where $\text{supp}(f)$ denotes the support of f in theorem 5.25). Besides, since f belongs to $L^2_H(\mathbb{R})$, $\mathcal{J}^H(f)$ exists and is equal to $\sum_{k=0}^{+\infty} \langle f, M_H(e_k) \rangle \langle \cdot, e_k \rangle$ in (L^2) .

(iii) Fix f in $L^1_{loc}(\mathbb{R}) \cap \text{supp}(\mathcal{K}) \cap \{f : \mathbb{R} \rightarrow \mathbb{R} : \int_{\mathbb{R}} f(s) dB^{(H)}(s) \in (L^2)\}$ and define $\tilde{\Omega}$ as subset of ω in Ω such that (5.8) is true for all g in $\{e_k : k \in \mathbb{N}\}$. Clearly $\tilde{\Omega}$ belongs to \mathcal{G} . As soon as f is in $\tilde{\Omega}$, we can write $\int_{\mathbb{R}} f(s) dB^{(H)}(s) = \sum_{k=0}^{+\infty} \langle M_H(f), e_k \rangle \langle \cdot, e_k \rangle$ in (L^2) . This entails that $M_H(f)$ belongs to $L^2(\mathbb{R})$ and then, by bijectivity of M_H , that f belongs to $L^2_H(\mathbb{R})$. \square

Remark 5.28. This proposition shows in particular, that for μ -almost every g in $\text{supp}(\mathcal{K})$:

$$g \in L^2_H(\mathbb{R}) \Leftrightarrow \int_{\mathbb{R}} g(s) dB^{(H)}(s) \in (L^2).$$

Moreover, in this case,

$$\mathcal{J}^H(g) \stackrel{(L^2)}{=} \int_{\mathbb{R}} g(s) dB^{(H)}(s).$$

6 Itô Formulas

6.1 Itô Formula for generalized functionals of mBm on an interval $[a, b]$ with $0 < a < b$

Let us fix some notations. For a tempered distribution G and a positive integer n , let $G^{(n)}$ denote the n^{th} distributional derivative of G . We also write $G' := G^{(1)}$. Hence, by definition, the equality $\langle G', \varphi \rangle = - \langle G, \varphi' \rangle$ holds for all φ in $\mathcal{S}(\mathbb{R})$. For a map $t \mapsto F(t)$ from $[a, b]$ to $\mathcal{S}_{-p}(\mathbb{R})$ we will note $\frac{\partial^n F}{\partial x^n}(t)$ the quantity $(F(t))^{(n)}$, that is the n^{th} derivative in $\mathcal{S}'(\mathbb{R})$, of the tempered distribution $F(t)$. Hence we may consider the map $t \mapsto \frac{\partial^n F}{\partial x^n}(t)$ from $[a, b]$ to $\mathcal{S}'(\mathbb{R})$. Moreover for any t_0 in $[a, b]$, we will note $\frac{\partial F}{\partial t}(t_0)$ the quantity $\lim_{r \rightarrow 0} \frac{F(t_0+r) - F(t_0)}{r}$ when it exists in $\mathcal{S}_{-p}(\mathbb{R})$, for a certain integer p . When it exists, $\frac{\partial F}{\partial t}(t_0)$ is a tempered distribution, which is said to be the derivative of the distribution $F(t)$ with respect to t at point $t = t_0$. In line with section 5.3, we then define, for t_0 in $[a, b]$ and a positive integer n , the following quantities:

$$\frac{\partial^n F}{\partial x^n}(t_0, B^h(t_0)) := (F(t_0))^{(n)}(B^h(t_0)) \quad \text{and} \quad \frac{\partial F}{\partial t}(t_0, B^h(t_0)) := \left(\frac{\partial F}{\partial t}(t_0) \right)(B^h(t_0)).$$

Theorem 6.1. Let $p \in \mathbb{N}$, a and b two reals with $0 < a < b$, and let F be an element of $C^1([a, b], \mathcal{S}_{-p}(\mathbb{R}))$ such that both maps $\frac{\partial F}{\partial x}$ and $\frac{\partial^2 F}{\partial x^2}$, from $[a, b]$ into $\mathcal{S}_{-p}(\mathbb{R})$, are continuous. Then the following equality holds in $(\mathcal{S})^*$:

$$\begin{aligned} F(b, B^{(h)}(b)) - F(a, B^{(h)}(a)) &= \int_a^b \frac{\partial F}{\partial t}(s, B^{(h)}(s)) ds + \int_a^b \frac{\partial F}{\partial x}(s, B^{(h)}(s)) dB^{(h)}(s) \\ &\quad + \frac{1}{2} \int_a^b \left(\frac{d}{ds} [Rh(s, s)] \right) \frac{\partial^2 F}{\partial x^2}(s, B^{(h)}(s)) ds. \end{aligned} \quad (6.1)$$

Remark 6.2. Recall that for all t in $[a, b]$, $\frac{d}{dt}[R_h(t, t)] = 2 t^{2h(t)-1} (h'(t) t \ln t + h(t))$.

Proof. We follow closely [4] p.97-98 for this proof. First notice that the three integrals on the right side of (6.1) exist since all integrands verify the assumptions of theorem 5.18. According to lemma 2.8 it is then sufficient to show equality of the S -transforms of both sides of (6.1). It is easy to see that, for every $\eta \in \mathcal{S}(\mathbb{R})$, the function $t \mapsto \gamma\left(t^{2h(t)}, \cdot - \int_0^t M_{h(t)}(\eta)(u) du\right)$ is differentiable from $(0, b]$ into $\mathcal{S}(\mathbb{R})$. Using theorem 5.12 and theorem 5.17 we may write, for t in $[0, b]$:

$$\begin{aligned} \frac{d}{dt}S(F(t, B^{(h)}(t)))(\eta) &= \frac{d}{dt} \left\langle F(t), \gamma\left(t^{2h(t)}, \cdot - \int_0^t M_{h(t)}(\eta)(u) du\right) \right\rangle \\ &= \left\langle \frac{\partial F}{\partial t}(t), \gamma\left(t^{2h(t)}, \cdot - \int_0^t M_{h(t)}(\eta)(u) du\right) \right\rangle \\ &\quad + 2 t^{2h(t)-1} (h'(t) t \ln t + h(t)) \left\langle F(t), \frac{\partial \gamma}{\partial t}\left(t^{2h(t)}, \cdot - \int_0^t M_{h(t)}(\eta)(u) du\right) \right\rangle \\ &\quad - \frac{d}{dt}[g_\eta(t, h(t))] \left\langle F(t), \frac{\partial \gamma}{\partial x}\left(t^{2h(t)}, \cdot - \int_0^t M_{h(t)}(\eta)(u) du\right) \right\rangle =: I_1 + I_2 + I_3. \end{aligned}$$

Now, $I_1 = S\left(\frac{\partial F}{\partial t}(t)(B^{(h)}(t))\right)(\eta) = S\left(\frac{\partial F}{\partial t}(t, B^{(h)}(t))\right)(\eta)$ using theorem 5.12 (iii). Besides, since γ fulfills the equality $\frac{\partial \gamma}{\partial t} = \frac{1}{2} \frac{\partial^2 \gamma}{\partial x^2}$, we get

$$\begin{aligned} I_2 &= t^{2h(t)-1} (h'(t) t \ln t + h(t)) \left\langle F(t), \frac{\partial^2 \gamma}{\partial x^2}\left(t^{2h(t)}, \cdot - \int_0^t M_{h(t)}(\eta)(u) du\right) \right\rangle \\ &= \frac{1}{2} \frac{d}{dt}[R_h(t, t)] S\left(\frac{\partial^2 F}{\partial x^2}(t, B^{(h)}(t))\right)(\eta). \end{aligned}$$

Using (ii) of theorem 5.12,

$$I_3 = S(W^{(h)}(t))(\eta) \left\langle \frac{\partial F}{\partial x}(t), \gamma\left(t^{2h(t)}, \cdot - \int_0^t M_{h(t)}(\eta)(u) du\right) \right\rangle.$$

Finally, we obtain

$$\begin{aligned} \frac{d}{dt}S(F(t, B^{(h)}(t)))(\eta) &= S\left(\frac{\partial F}{\partial t}(t, B^{(h)}(t))\right)(\eta) + S\left(W^{(h)}(t) \diamond \frac{\partial F}{\partial x}(t, B^{(h)}(t))\right)(\eta) \\ &\quad + \frac{1}{2} \frac{d}{dt}[R_h(t, t)] S\left(\frac{\partial^2 F}{\partial x^2}(t, B^{(h)}(t))\right)(\eta). \end{aligned}$$

□

In the proof of theorem 6.6 we will need the particular case where the function $F(\cdot)$ is constant, equal to a tempered distribution that we denote F . In this case we have the following

Corollary 6.3. Let $0 < a < b$ and F be a tempered distribution. Then the following equality holds in $(\mathcal{S})^*$:

$$F(B^{(h)}(b)) - F(B^{(h)}(a)) = \int_a^b F'(B^{(h)}(s)) dB^{(h)}(s) + \frac{1}{2} \int_a^b \left(\frac{d}{ds}[R_h(s, s)]\right) F''(B^{(h)}(s)) ds.$$

Remark 6.4. Of course when the function h is constant on \mathbb{R} , we get the Itô formula for fractional Brownian motion given in [4].

6.2 Itô Formula in (L^2)

In this subsection, we give two further versions of Itô formula. The first one holds for functions with polynomial growth but weak differentiability assumptions, whereas the second one deals with $C^{1,2}$ functions with sub-exponential growth.

6.2.1 Itô Formula for certain generalized functionals of mBm on an interval

Theorem 6.1 does not extend immediately to the case $a = 0$ because the generalized functional is not defined in this situation, since $M_h(\mathbb{1}_{[0,t]})$ converges to 0 a.s and in $L^2(\mathbb{R})$ when t tends to 0 (see theorem-definition 5.2). As in [4], we now extend the formula to deal with this difficulty. We will need the following lemma which is a particular case of lemma 6.8 below.

Lemma 6.5. *Let $f : \mathbb{R} \rightarrow \mathbb{R}$ be a continuous function such that there exists a couple (C, λ) in $\mathbb{R} \times \mathbb{R}_+$ with $|f(y)| \leq Ce^{\lambda y^2}$, for all real y . Let $g : \mathbb{R} \rightarrow \mathbb{R}_+^*$ be a measurable function such that $\lim_{t \rightarrow 0} g(t) = 0$ and define L_f on $\mathbb{R}_+^* \times \mathbb{R}$ by $L_f(u, x) := \int_{\mathbb{R}} f(y) \gamma(u, x - y) dy$. Then $\lim_{(t,x) \rightarrow (0^+, x_0)} L_f(g(t), x) = f(x_0)$, for all real x_0 .*

Theorem 6.6. *Let $F : \mathbb{R} \rightarrow \mathbb{R}$ be continuous at 0 and of polynomial growth. Assume that the first distributional derivative of F is of function type (defined at the beginning of section 3.1). Then the following equality holds in (L^2) :*

$$F(B^{(h)}(b)) - F(0) = \int_0^b F'(B^{(h)}(s)) dB^{(h)}(s) + \frac{1}{2} \int_0^b \left(\frac{d}{ds} [R_h(s, s)] \right) F''(B^{(h)}(s)) ds. \quad (6.2)$$

Proof. We follow again closely [4].

Step 1: $\lim_{t \rightarrow 0^+} F(B^{(h)}(t)) = F(0)$ in (S^*) . In order to establish this fact, let us use theorem 8.6 of [27].

Since F is of polynomial growth, we may write, thanks to formula (29) of [4], that there exist two reals C and M and a positive integer m such that $\mathbb{E}[F(B^{(h)}(t))^2] \leq C^2(1 + \frac{(2m)!}{2^m m!} |t|^{2mh(t)}) \leq M^2$, for all t in $[0, b]$. Since $\| : e^{<\cdot, \eta>} : \|_0 = e^{\frac{1}{2}|\eta|_0^2}$, Cauchy-Schwarz inequality yields

$$\begin{aligned} |S[F(B^{(h)}(t))](\eta)| &= |\mathbb{E}[F(B^{(h)}(t)) : e^{<\cdot, \eta>} :]| \leq \|F(B^{(h)}(t))\|_0 \| : e^{<\cdot, \eta>} : \|_0 \\ &\leq (1 + M) e^{\frac{1}{2}|\eta|_0^2}; \quad \text{for all } t \text{ in } [0, b] \text{ and } \eta \text{ in } \mathcal{S}(\mathbb{R}). \end{aligned} \quad (6.3)$$

It then just remains to show that $\lim_{t \rightarrow 0^+} S[F(B^{(h)}(t))](\eta) = F(0)$. Thanks to theorem 5.12 and lemma 6.5, we get

$$\begin{aligned} \lim_{t \rightarrow 0^+} S[F(B^{(h)}(t))](\eta) &= \lim_{t \rightarrow 0^+} \int_{\mathbb{R}} F(y) \frac{1}{\sqrt{2\pi t^{2h(t)}}} \exp \left\{ -\frac{1}{2t^{2h(t)}} \left(\int_0^t M_{h(t)}(\eta)(u) du - y \right)^2 \right\} dy \\ &= \lim_{t \rightarrow 0^+} \int_{\mathbb{R}} F(y) \gamma \left(t^{2h(t)}, \int_0^t M_{h(t)}(\eta)(u) du - y \right) dy \\ &= \lim_{t \rightarrow 0^+} L_F \left(t^{2h(t)}, \int_0^t M_{h(t)}(\eta)(u) du \right) = F(0). \end{aligned} \quad (6.4)$$

Step 2: $\lim_{a \rightarrow 0^+} \int_a^b F'(B^{(h)}(t)) dB^{(h)}(t) = \int_0^b F'(B^{(h)}(t)) dB^{(h)}(t)$ in $(S)^*$.

Define $[H_1, H_2] := [\min_{t \in [0, b]} h(t), \max_{t \in [0, b]} h(t)]$ and let us prove the two following facts

- (i) There exists a constant D_1 which depends only of F such that $\|F'(B^{(h)}(t))\|_{-1} \leq D_1 \max \left\{ \frac{1}{t^{H_1}}, \frac{1}{t^{H_2}} \right\}$ for all t in $(0, b]$.

Let us first notice that, for all (x, b, t) in $\mathbb{R} \times \mathbb{R}_+^* \times (0, b]$, we have

$$\exp\{-x^2/4t^{2h(t)}\} \leq e^{-x^2/4} + \varepsilon(b) \exp\{-x^2/4b^{2H_2}\},$$

where $\varepsilon(b) = 1$ if $b \geq 1$ and $\varepsilon(b) = 0$ if $b < 1$. Note moreover that the function $x \mapsto F'(x) (e^{-x^2/4} + \varepsilon(b) \exp\{-x^2/4b^{2H_2}\})$ belongs to $L^1(\mathbb{R})$ since F' is of function type and belongs to $\mathcal{S}'(\mathbb{R})$. Since the operator A^{-1} has a norm operator equal to $1/2$ (see [27] p.17) and using the equality $|M_{h(t)}(\mathbb{1}_{[0,t]})|_0^2 = t^{2h(t)}$, we get the following upper bound, valid for all k in \mathbb{N} ,

$$\begin{aligned} | \langle F', \xi_{(t,h(t),k)} \rangle |^2 &= \left| \int_{\mathbb{R}} F'(x) \pi^{1/4} (k!)^{1/2} t^{kh(t)} \exp\left\{-\frac{x^2}{4t^{2h(t)}}\right\} e_k(x/(\sqrt{2}t^{h(t)})) dx \right|^2 \\ &\leq \pi^{1/2} \sup_{u \in \mathbb{R}} |e_k^2(u)| \left(\int_{\mathbb{R}} |F'(x)| \exp\left\{-\frac{x^2}{4t^{2h(t)}}\right\} dx \right)^2 t^{2kh(t)} k! \\ &\leq \underbrace{\pi^{1/2} \sup \left\{ \sup_{u \in \mathbb{R}} |e_k^2(u)| : k \in \mathbb{N} \right\}}_{=: D_0} \left(\int_{\mathbb{R}} |F'(x)| (e^{-x^2/4} + \varepsilon(b) \exp\{-x^2/4b^{2H_2}\}) dx \right)^2 t^{2kh(t)} k!. \end{aligned}$$

Using (ii) of remark 2.3 and again the fact that the operator A^{-1} has a norm operator equal to $1/2$ (see (2) p.17 of [27]) we can write, for all real t in $(0, b]$, that

$$\begin{aligned} \|F'(B^{(h)}(t))\|_{-1}^2 &= \left\| \frac{1}{\sqrt{2\pi t^{2h(t)}}} \sum_{k=0}^{+\infty} (k!)^{-1} t^{-2kh(t)} \langle F', \xi_{(t,h(t),k)} \rangle I_k \left((M_{h(t)}(\mathbb{1}_{[0,t]}))^{\otimes k} \right) \right\|_{-1}^2 \\ &= \frac{1}{2\pi t^{2h(t)}} \sum_{k=0}^{+\infty} (k!)^{-1} t^{-4kh(t)} | \langle F', \xi_{(t,h(t),k)} \rangle |^2 \underbrace{|(A^{-1})^{\otimes k} \left((M_{h(t)}(\mathbb{1}_{[0,t]}))^{\otimes k} \right)|_0^2}_{=|A^{-1}(M_{h(t)}(\mathbb{1}_{[0,t]}))|_0^{2k}} \\ &\leq \frac{D_0}{2\pi t^{2h(t)}} \sum_{k=0}^{+\infty} (k!)^{-1} t^{-4kh(t)} t^{2kh(t)} k! \left(\frac{1}{2}\right)^k t^{2kh(t)} \leq \frac{D_0}{\pi} \max \left\{ \frac{1}{t^{2H_1}}, \frac{1}{t^{2H_2}} \right\}. \quad (6.5) \end{aligned}$$

(ii) $\int_0^b F'(B^{(h)}(t)) dB^{(h)}(t)$ exists in $(\mathcal{S})^*$ and is equal to $\lim_{a \rightarrow 0^+} \int_a^b F'(B^{(h)}(t)) dB^{(h)}(t)$ in the sense of $(\mathcal{S})^*$.

In order to establish the existence of $\int_0^b F'(B^{(h)}(t)) dB^{(h)}(t)$ in $(\mathcal{S})^*$, let us use theorem 2.9. From theorem-definition 2.2, we know that $F'(B^{(h)}(t)) \diamond W^{(h)}(t)$ belongs to $(\mathcal{S})^*$ for every t in $(0, b]$. Moreover using lemma 2.6 we get, for $\eta \in \mathcal{S}(\mathbb{R})$ and $t \in (0, b]$,

$$\begin{aligned} \left| S(F'(B^{(h)}(t)) \diamond W^{(h)}(t))(\eta) \right| &\leq \|F'(B^{(h)}(t))\|_{-1} \|W^{(h)}(t)\|_{-2} \exp\{|\eta|_2^2\} \\ &\leq \underbrace{\widehat{K} \max \left\{ \frac{1}{t^{H_1}}, \frac{1}{t^{H_2}} \right\}}_{=: \mathcal{L}(t)} \exp\{|\eta|_2^2\}, \quad (6.6) \end{aligned}$$

where we have defined $\widehat{K} := \frac{D_0}{\pi} \sup_{t \in [0, b]} \|W^{(h)}(t)\|_{-2}$. The function $t \mapsto S(F'(B^{(h)}(t)) \diamond W^{(h)}(t))(\eta)$ is measurable on $[0, b]$ since $S(F'(B^{(h)}(t)) \diamond W^{(h)}(t))(\eta) = S(F'(B^{(h)}(t))) (\eta) S(W^{(h)}(t)) (\eta)$ using theorems 5.12 and 5.17. Moreover, since \mathcal{L} belongs to $L^1([0, b])$, theorem 2.9 applies and shows that $\int_0^b F'(B^{(h)}(t)) dB^{(h)}(t)$ is in $(\mathcal{S})^*$. It then just remains to use theorem 8.6 in [27] to show the convergence, in the sense of $(\mathcal{S})^*$, of $\int_a^b F'(B^{(h)}(t)) dB^{(h)}(t)$ to $\int_0^b F'(B^{(h)}(t)) dB^{(h)}(t)$ as a tends to 0_+ . Let $(a_n)_{n \in \mathbb{N}}$ be a decreasing sequence of real numbers which tends to 0 when n tends to $+\infty$ and $\Psi_n := \int_0^b F'(B^{(h)}(t)) dB^{(h)}(t) - \int_{a_n}^b F'(B^{(h)}(t)) dB^{(h)}(t)$. For every $\eta \in \mathcal{S}(\mathbb{R})$ and every $n \in \mathbb{N}$, $S(\Psi_n)(\eta) = \int_0^b \mathbb{1}_{[0, a_n]}(t) S(F'(B^{(h)}(t)) \diamond W^{(h)}(t))(\eta) dt$. Using (6.6) and the dominated convergence

theorem, it is easy to show that $\lim_{n \rightarrow +\infty} S(\Psi_n)(\eta) = 0$. Hence theorem 8.6 of [27] applies and shows that

$$\lim_{a \rightarrow 0^+} \int_a^b F'(B^{(h)}(t)) dB^{(h)}(t) = \int_0^b F'(B^{(h)}(t)) dB^{(h)}(t) \text{ in } (\mathcal{S})^*.$$

Step 3: Proof of (6.2)

For any real a such that $0 < a < b$, we have, thanks to corollary 6.3,

$$F(B^{(h)}(b)) - F(B^{(h)}(a)) - \int_a^b F'(B^{(h)}(s)) dB^{(h)}(s) = \frac{1}{2} \int_a^b \left(\frac{d}{ds}[R_h(s, s)] \right) F''(B^{(h)}(s)) ds.$$

Steps 1 and 2 ensure that the left hand side has a limit in $(\mathcal{S})^*$ when a tends to 0. Using theorem 2.9, it is easy to see that $\int_0^b \left(\frac{d}{ds}[R_h(s, s)] \right) F''(B^{(h)}(s)) ds$ belongs to $(\mathcal{S})^*$. Hence using the dominated convergence theorem and lemma 2.8 we deduce that $\lim_{a \rightarrow 0^+} \int_a^b \left(\frac{d}{ds}[R_h(s, s)] \right) F''(B^{(h)}(s)) ds$ is equal to $\int_0^b \left(\frac{d}{ds}[R_h(s, s)] \right) F''(B^{(h)}(s)) ds$ in $(\mathcal{S})^*$. Since we have proved that, for all t in $[0, b]$, $F(B^{(h)}(t))$ belongs to (L^2) , the same holds for the right hand side of (6.2) and then this equality holds also in (L^2) . \square

Remark 6.7. As in the case of fBm (see [4]), the fact that both sides of the equality (6.2) are in (L^2) does not imply that every single element of the right hand side is in (L^2) . This will be true if, for instance,

$$F''(B^{(h)}(t)) \text{ belongs to } (L^2) \text{ and } \int_0^b \left| \frac{d}{ds}[R_h(s, s)] \right| \|F''(B^{(h)}(s))\|_0 ds < +\infty.$$

6.2.2 Itô Formula in (L^2) for $C^{1,2}$ functions with sub-exponential growth

Let us begin with the following lemma:

Lemma 6.8. Let $T > 0$ and $f : [0, T] \times \mathbb{R} \rightarrow \mathbb{R}$ be a continuous function such that there exists a couple (C_T, λ_T) of $\mathbb{R} \times \mathbb{R}_+$ such that $\max_{t \in [0, T]} |f(t, y)| \leq C_T e^{\lambda_T y^2}$ for all real y . Define $a > \lambda_T$, $I_a := (0, \frac{1}{4a})$ and $J_f : \mathbb{R} \times \mathbb{R}_+ \times I_a \rightarrow \mathbb{R}$ by $J_f(x, t, u) := \int_{\mathbb{R}} f(t, y) \gamma(u, x - y) dy$. Then J_f is well defined and moreover $\lim_{(x, t, u) \rightarrow (x_0, 0^+, 0^+)} J(x, t, u) = f(0, x_0)$.

Proof. This is an immediate consequence of theorems 1 p.88 and 2 p.89 of [38]. \square

Let us now give an Itô formula for functions with subexponential growth.

Theorem 6.9. Let $T > 0$ and $h : \mathbb{R} \rightarrow (0, 1)$ be a C^1 function such that h' is bounded on \mathbb{R} . Let f be a $C^{1,2}([0, T] \times \mathbb{R}, \mathbb{R})$ function. Furthermore, assume that there are constants $C \geq 0$ and $\lambda < \frac{1}{4 \max_{t \in [0, T]} t^{2h(t)}}$ such that for all (t, x) in $[0, T] \times \mathbb{R}$,

$$\max_{t \in [0, T]} \left\{ |f(t, x)|, \left| \frac{\partial f}{\partial t}(t, x) \right|, \left| \frac{\partial f}{\partial x}(t, x) \right|, \left| \frac{\partial^2 f}{\partial x^2}(t, x) \right| \right\} \leq C e^{\lambda x^2}. \quad (6.7)$$

Then, for all t in $[0, T]$, the following equality holds in (L^2) :

$$f(T, B^{(h)}(T)) = f(0, 0) + \int_0^T \frac{\partial f}{\partial t}(t, B^{(h)}(t)) dt + \int_0^T \frac{\partial f}{\partial x}(t, B^{(h)}(t)) dB^{(h)}(t) + \frac{1}{2} \int_0^T \left(\frac{d}{dt}[R_h(t, t)] \right) \frac{\partial^2 f}{\partial x^2}(t, B^{(h)}(t)) dt. \quad (6.8)$$

Proof. Our proof is similar to the one of theorem 5.3 in [5]. Let $T > 0$ and $t \in [0, T]$. Formula (6.8) may be rewritten as

$$\int_0^T \frac{\partial f}{\partial x}(t, B^{(h)}(t)) dB^{(h)}(t) = f(T, B^{(h)}(T)) - f(0, 0) - \int_0^T \frac{\partial f}{\partial t}(t, B^{(h)}(t)) dt - \frac{1}{2} \int_0^T \left(\frac{d}{dt}[R_h(t, t)] \right) \frac{\partial^2 f}{\partial x^2}(t, B^{(h)}(t)) dt. \quad (6.9)$$

In order to show that all members on the right hand side of (6.9) are in (L^2) , let us use theorem 2.10. If G belongs to $\left\{f, \frac{\partial f}{\partial t}, \frac{\partial f}{\partial x}, \frac{\partial^2 f}{\partial x^2}\right\}$ we may write, thanks to (6.7),

$$\mathbb{E} \left[G(t, B^{(h)}(t))^2 \right] \leq C^2 \int_{\mathbb{R}} \exp \left\{ -\frac{1}{2} \left(\frac{1}{t^{2h(t)}} - 4\lambda \right) v^2 \right\} \frac{dv}{\sqrt{2\pi t^{2h(t)}}} \leq \overbrace{C^2 (1 - 4\lambda \max_{t \in [0, T]} t^{2h(t)})^{-1/2}}{=: M^2}. \quad (6.10)$$

Since $B^{(h)}(t) = B^H(t)|_{H=h(t)}$ a.s, it is easy to see (in view of [5] p.978) that $B^{(h)}(t)$ is a Gaussian variable with mean equal to $\int_0^t M_{h(t)}(\eta)(u) du = g_\eta(t, h(t))$ and variance equal to $t^{2h(t)}$ under the probability \mathbb{Q}_η which has been defined in (2.18). Hence, for every t in $(0, T]$ and η in $\mathcal{S}(\mathbb{R})$,

$$\begin{aligned} S(G(t, B^{(h)}(t)))(\eta) &= \mathbb{E}_{\mathbb{Q}_\eta}[G(t, B^{(h)}(t))] = \int_{\mathbb{R}} G(t, u + g_\eta(t, h(t))) \gamma(t^{2h(t)}, u) du \\ &= \int_{\mathbb{R}} G \left(t, u + \int_0^t M_{h(t)}(\eta)(x) dx \right) \frac{1}{\sqrt{2\pi}} e^{-u^2/2} du. \end{aligned} \quad (6.11)$$

Using the theorem of continuity under the integral sign, we see that the functions $t \mapsto S[G(t, B^{(h)}(t))](\eta)$ and $t \mapsto S[G(t, B^{(h)}(t)) \diamond W^{(h)}(t)](\eta)$ are continuous on $[0, T]$. Moreover, in view of (6.10), $t \mapsto \|G(t, B^{(h)}(t))\|_0$ belongs to $L^1([0, T])$. Furthermore, note that

$$\int_0^T \left\| \left(\frac{d}{dt}[R_h(t, t)] \right) \frac{\partial^2 f}{\partial x^2}(t, B^{(h)}(t)) \right\| dt \leq 2M \int_0^T t^{2h(t)-1} |h'(t) t \ln t + h(t)| dt < +\infty.$$

Thus, theorem 2.10 applies and shows that all members on the right side of (6.9) are in (L^2) .

Let us now show that $t \mapsto \frac{\partial f}{\partial x}(t, B^{(h)}(t)) \diamond W^{(h)}(t)$ is $(\mathcal{S})^*$ -integrable over $[0, T]$.

Reasoning as in the estimate (6.6), we note that there exists an integer $q \geq 2$ such that $\frac{\partial f}{\partial x}(t, B^{(h)}(t)) \diamond W^{(h)}(t)$ belongs to (\mathcal{S}_{-q}) for every t in $[0, T]$. Moreover, for every η in $\mathcal{S}(\mathbb{R})$ and every t in $(0, T]$ we have, using lemma 2.6,

$$\begin{aligned} \left| S \left(\frac{\partial f}{\partial x}(t, B^{(h)}(t)) \diamond W^{(h)}(t) \right) (\eta) \right| &\leq \left\| \frac{\partial f}{\partial x}(t, B^{(h)}(t)) \right\|_0 \|W^{(h)}(t)\|_{-2} \exp\{|\eta|_2^2\} \\ &\leq \left(\sup_{t \in [0, T]} \|W^{(h)}(t)\|_{-2} \right) \left\| \frac{\partial f}{\partial x}(t, B^{(h)}(t)) \right\|_0 \exp\{|\eta|_2^2\}, \end{aligned}$$

Since $t \mapsto \left\| \frac{\partial f}{\partial x}(t, B^{(h)}(t)) \right\|_0$ belongs to $L^1([0, T])$, theorem 2.9 applies on $[0, T]$ to the effect that $\int_0^T \frac{\partial f}{\partial x}(t, B^{(h)}(t)) dB^{(h)}(t)$ belongs to $(\mathcal{S})^*$. It then just remains to show the following equality for all t in $[0, T]$ and η in $\mathcal{S}(\mathbb{R})$:

$$\begin{aligned} S \left(\int_0^T \frac{\partial f}{\partial x}(t, B^{(h)}(t)) dB^{(h)}(t) \right) (\eta) &= S \left(f(T, B^{(h)}(T)) - f(0, 0) - \int_0^T \frac{\partial f}{\partial t}(t, B^{(h)}(t)) dt \right) (\eta) \\ &\quad - S \left(\frac{1}{2} \int_0^T \left(\frac{d}{dt}[R_h(t, t)] \right) \frac{\partial^2 f}{\partial x^2}(t, B^{(h)}(t)) dt \right) (\eta). \end{aligned} \quad (6.12)$$

Using (6.11) with $G = f$ and applying the theorem of differentiation under the integral sign, we get

$$\begin{aligned} \frac{d}{dt} [S(f(t, B^{(h)}(t)))(\eta)] &= \int_{\mathbb{R}} \frac{d}{dt} [f(t, u + g_\eta(t, h(t))) \gamma(t^{2h(t)}, u)] du \\ &= \underbrace{\int_{\mathbb{R}} \gamma(t^{2h(t)}, u) \frac{d}{dt} [f(t, u + g_\eta(t, h(t)))] du}_{=: U_1(t)} + \underbrace{\int_{\mathbb{R}} f(t, u + g_\eta(t, h(t))) \frac{d}{dt} [\gamma(t^{2h(t)}, u)] du}_{=: U_2(t)}. \end{aligned}$$

Now,

$$\begin{aligned}
U_1(t) &= \int_{\mathbb{R}} \gamma(t^{2h(t)}, u) \frac{\partial f}{\partial t}(t, u + g_\eta(t, h(t))) du + \int_{\mathbb{R}} \gamma(t^{2h(t)}, u) \frac{\partial f}{\partial x}(t, u + g_\eta(t, h(t))) \frac{d}{dt} g_\eta(t, h(t)) du \\
&= S\left(\frac{\partial f}{\partial t}(t, B^{(h)}(t))\right)(\eta) + S\left(\frac{\partial f}{\partial x}(t, B^{(h)}(t))\right)(\eta) S(W^{(h)}(t))(\eta).
\end{aligned}$$

Besides, using the equality $\frac{\partial \gamma}{\partial t} = \frac{1}{2} \frac{\partial^2 \gamma}{\partial x^2}$ and an integration by parts, we get

$$U_2(t) = \frac{1}{2} \frac{d}{dt} [t^{2h(t)}] \int_{\mathbb{R}} \frac{\partial^2 f}{\partial x^2}(t, u + g_\eta(t, h(t))) \gamma(t^{2h(t)}, u) du = \frac{1}{2} \frac{d}{dt} [t^{2h(t)}] S\left(\frac{\partial^2 f}{\partial x^2}(t, B^{(h)}(t))\right)(\eta).$$

Hence we obtain, for any $\varepsilon > 0$, upon integrating $t \mapsto U_1(t) + U_2(t)$ between ε and T ,

$$\begin{aligned}
S(f(t, B^{(h)}(t)))(\eta) - S(f(\varepsilon, B^{(h)}(\varepsilon)))(\eta) &= \int_{\varepsilon}^T S\left(\frac{\partial f}{\partial t}(t, B^{(h)}(t))\right)(\eta) dt \\
&+ \int_{\varepsilon}^T S\left(\frac{\partial f}{\partial x}(t, B^{(h)}(t)) \diamond W^{(h)}(t)\right)(\eta) dt + \frac{1}{2} \int_{\varepsilon}^T \frac{d}{dt} [t^{2h(t)}] S\left(\frac{\partial^2 f}{\partial x^2}(t, B^{(h)}(t))\right)(\eta) dt. \quad (6.13)
\end{aligned}$$

Let us now show that $\lim_{\varepsilon \rightarrow 0^+} S(f(\varepsilon, B^{(h)}(\varepsilon)))(\eta) = f(0, 0) = S(f(0, B^{(h)}(0)))(\eta)$. For every $\varepsilon > 0$, (6.11)

can be rewritten as $S(f(\varepsilon, B^{(h)}(\varepsilon)))(\eta) = \int_{\mathbb{R}} f(\varepsilon, y) \gamma(\varepsilon^{2h(\varepsilon)}, g_\eta(\varepsilon, h(\varepsilon)) - y) dy$.

For a fixed $T > 0$, let λ_T, C_T be such that (6.7) is fulfilled. There exists $b > 0$ such that $\varepsilon^{2h(\varepsilon)}$ belongs to I_a (defined in lemma 6.8) as soon as $0 < \varepsilon < b$. Hence we may write, for any ε in $(0, b)$, $S(f(\varepsilon, B^{(h)}(\varepsilon)))(\eta) = J_f(g_\eta(\varepsilon, h(\varepsilon)), \varepsilon, \varepsilon^{2h(\varepsilon)})$. Since $\lim_{\varepsilon \rightarrow 0^+} \varepsilon^{2h(\varepsilon)}$ and $\lim_{\varepsilon \rightarrow 0^+} g_\eta(\varepsilon, h(\varepsilon))$ are equal to 0, lemma 6.8 applies with $x_0 = 0$, and yields $\lim_{\varepsilon \rightarrow 0^+} S(f(\varepsilon, B^{(h)}(\varepsilon)))(\eta) = f(0, 0)$.

Let us now establish (6.12). Thanks to the fact that both the functions $t \mapsto S[G(t, B^{(h)}(t))](\eta)$ and $t \mapsto S[G(t, B^{(h)}(t)) \diamond W^{(h)}(t)](\eta)$ are continuous on $[0, T]$ and using the dominated convergence we can take the limit when ε tends to 0 on the right hand side of (6.13) and finally get

$$\begin{aligned}
S[f(T, B^{(h)}(T)) - f(0, 0)](\eta) &= S\left(\int_0^T \frac{\partial f}{\partial t}(t, B^{(h)}(t)) dt\right)(\eta) + S\left(\int_0^T \frac{\partial f}{\partial x}(t, B^{(h)}(t)) dB^{(h)}(t)\right)(\eta) \\
&+ S\left(\frac{1}{2} \int_0^T \frac{d}{dt} [t^{2h(t)}] \frac{\partial^2 f}{\partial x^2}(t, B^{(h)}(t))\right)(\eta) dt. \quad (6.14)
\end{aligned}$$

□

Remark 6.10. We observe that if we take expectations on both sides of Itô's formula (6.7), we get exactly formula (1) of theorem 2.1 of [23], which is a general weak Itô formula for Gaussian processes, in the particular case where the Gaussian process is chosen to be an mBm.

7 Tanaka formula and examples

In this section we first give a Tanaka formula as a corollary to theorem 6.6 with $F : x \mapsto |x - a|$. We then consider the case of two particular h functions that give noteworthy results.

7.1 Tanaka formula

Theorem 7.1 (Tanaka formula for mBm). *Let $h : \mathbb{R} \rightarrow (0, 1)$ be of class C^1 , $a \in \mathbb{R}$ and $T > 0$. The following equality holds in (L^2) :*

$$|B^{(h)}(T) - a| = |a| + \int_0^T \text{sign}(B^{(h)}(t) - a) dB^{(h)}(t) + \int_0^T \frac{d}{dt}[R_h(t, t)] \delta_{\{a\}}(B^{(h)}(t)) dt, \quad (7.1)$$

where the function sign is defined on \mathbb{R} by $\text{sign}(x) := \mathbb{1}_{\mathbb{R}_+^*}(x) - \mathbb{1}_{\mathbb{R}_-}(x)$.

Proof. This is a direct application of theorem 6.6 with $F : x \mapsto |x - a|$. \square

Remark 7.2. That the previous equality holds true in (L^2) does not imply of course that both integrals above are in (L^2) . This last result will be established in a forthcoming paper.

7.2 Itô formula for functions h such that $\frac{d}{dt}[R_h(t, t)] = 0$

If h verifies $\frac{d}{dt}[R_h(t, t)] = 0$, then the second order term $\frac{\partial^2 f}{\partial x^2}(t, B^{(h)}(t))$ disappears in Itô formula. The formula is then formally the same one as in ordinary calculus. In this case, (7.1) reads:

$$|B^{(h)}(T) - a| = |a| + \int_0^T \text{sign}(B^{(h)}(t) - a) dB^{(h)}(t).$$

Note that the “local time” part disappears in this equality.

Solving the differential equation $\frac{d}{dt}[R_h(t, t)] = 0$ yields two families of functions, denoted $(h_{1,\lambda})_{\lambda \in \mathbb{R}_+^*}$ and $(h_{2,\lambda})_{\lambda \in \mathbb{R}_-^*}$:

$$\forall \lambda > 0, \quad h_{1,\lambda} : \begin{array}{ccc} (-\infty, -e^\lambda) \cup (e^\lambda, +\infty) & \rightarrow & (0, 1) \\ t & \mapsto & \frac{\lambda}{\ln|t|}, \end{array}$$

and

$$\forall \lambda < 0, \quad h_{2,\lambda} : \begin{array}{ccc} (-e^\lambda, 0) \cup (0, e^\lambda) & \rightarrow & (0, 1) \\ t & \mapsto & \frac{\lambda}{\ln|t|}. \end{array}$$

In order to obtain an mBm defined on a compact interval, we may choose a compact subset of $(-\infty, -e^\lambda) \cup (e^\lambda, +\infty)$ when $\lambda > 0$ and a compact subset of $(-e^\lambda, 0) \cup (0, e^\lambda)$ when $\lambda < 0$.

Figures 1 and 2 display examples of mBm with functions $h_1(t) := \frac{1}{\ln t}$ defined on $[e + 10^{-3}, 100]$ and $h_2(t) := \frac{-1}{\ln t}$ defined on $[10^{-3}, 1/e - 10^{-2}]$.

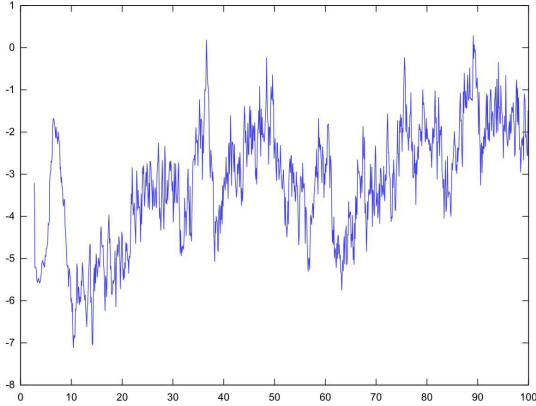


Figure 1: $t \mapsto B^{(h_1)}(t)$ with $h_1(t) := \frac{1}{\ln t}$ on $[e + 10^{-3}, 100]$.

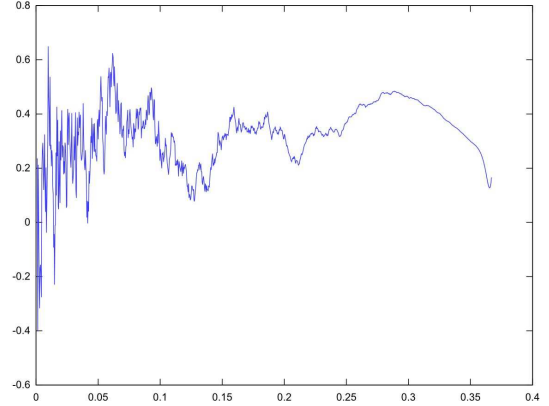


Figure 2: $t \mapsto B^{(h_2)}(t)$ with $h_2(t) := \frac{-1}{\ln t}$ on $[1.10^{-3}, 1/e - 10^{-3}]$.

Note moreover that $\lim_{t \rightarrow +\infty} h_i(t) = \lim_{t \rightarrow 0} h_i(t) = 0$ for $i = 1, 2$.

7.3 Itô formula for functions h such that $\frac{d}{dt}[R_h(t, t)] = 1$

The situation where $\frac{d}{dt}[R_h(t, t)] = 1$ is interesting since then Itô formula is formally the same as in the case of standard Brownian motion. As a consequence, Tanaka formula takes the familiar form :

$$|B^{(h)}(T) - a| = |a| + \int_0^T \text{sign}(B^{(h)}(t) - a) dB^{(h)}(t) + \int_0^T \delta_{\{a\}}(B^{(h)}(t)) dt.$$

Thus, instead of a "weighted" local time as in (7.1), we get here an explicit expression for the local time of mBm for a family of h functions that we describe now.

The solutions of the differential equation are given by

$$h_c : \begin{array}{l} (c, +\infty) \setminus \{-1, 0, 1\} \\ t \end{array} \rightarrow \begin{array}{l} \mathbb{R} \\ \mapsto \frac{1}{2} \frac{\ln(t-c)}{\ln|t|}, \end{array} \quad (7.2)$$

where $c \in \mathbb{R}$.

Recall that h_c is required to range in $(0, 1)$. Denote, for $c \in \mathbb{R}$, $I_c := \{t \in (c, +\infty) \setminus \{-1, 0, 1\} : 0 < h_c(t) < 1\}$. For c in $(-\infty, 1/4)$, let $t_1 := t_1(c) := \frac{1-\sqrt{1-4c}}{2}$ and $t_2 := t_2(c) := \frac{1+\sqrt{1-4c}}{2}$. Then I_c is explicitly given as follows:

$$\begin{array}{ll} \forall c \in (-\infty, -2], & I_c = (1+c, t_1) \cup (t_2, +\infty), \\ \forall c \in (-2, -1], & I_c = (t_1, 1+c) \cup (t_2, +\infty), \\ \forall c \in (-1, 0), & I_c = (t_1, 0) \cup (0, 1+c) \cup (t_2, +\infty), \\ \forall c \in [0, 1/4), & I_c = (t_1, t_2) \cup (1+c, +\infty), \\ \forall c \geq 1/4, & I_c = (1+c, +\infty). \end{array}$$

Figures 3 and 4 display examples of multifractional Brownian motion with regularity functions $h_3(t) := \frac{1}{2} \frac{\ln(t-1)}{\ln t}$ defined on $[2 + 10^{-3}, 5]$ and $h_4(t) := \frac{1}{2} \frac{\ln(t+1)}{\ln|t|}$ defined on $[\frac{1-\sqrt{5}}{2} + 10^{-3}, -10^{-3}]$.

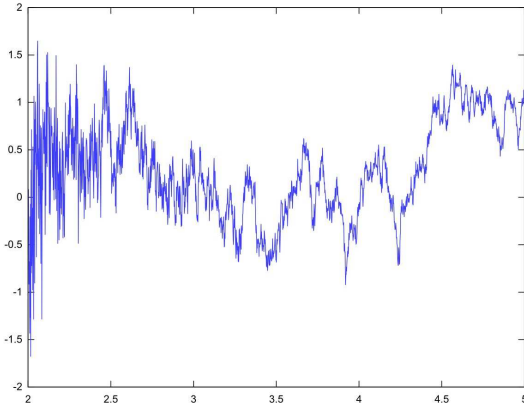


Figure 3: $t \mapsto B^{(h_3)}(t)$ with $h_3(t) := \frac{1}{2} \frac{\ln(t-1)}{\ln t}$ on $[2 + 10^{-3}, 5]$.

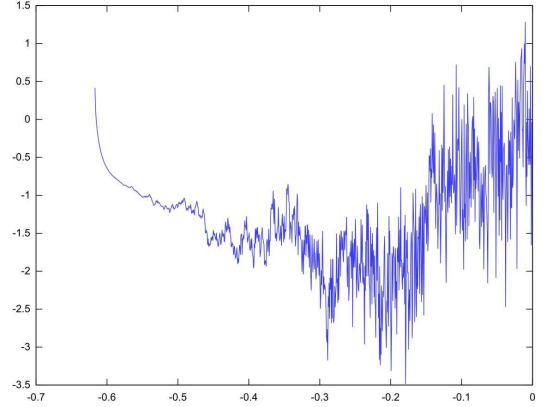


Figure 4: $t \mapsto B^{(h_4)}(t)$ with $h_4(t) := \frac{1}{2} \frac{\ln(t+1)}{\ln|t|}$ on $[\frac{1-\sqrt{5}}{2} + 10^{-3}, -10^{-3}]$.

Note that the case $c = 0$ yields the constant function $h_c \equiv 1/2$, *i.e.* standard Brownian motion. Moreover, since $\lim_{t \rightarrow +\infty} h_c(t) = 1/2$ for every c , we see that the family of functions h_c behaves, asymptotically, like the constant function equal to $1/2$. However this does not mean that there is convergence in law of $B^{(h_c)}$ to Brownian motion; in fact one needs to scale $B^{(h_c)}$. For every t in \mathbb{R}^* , define the process X_t on \mathbb{R}_+ by $X_t(u) := \frac{B^{(h_c)}(tu)}{\sqrt{t}}$. Then $\{X_t(u); u \in \mathbb{R}_+\} \xrightarrow[t \rightarrow +\infty]{\mathcal{L}} \{B(u); u \in \mathbb{R}_+\}$ where B still denotes a Brownian motion and \mathcal{L} denotes convergence in law.

8 Conclusion and future work

In this paper we have used a white noise approach to define a stochastic integral with respect to multifractional Brownian motion which generalizes the one for fBm based on the same approach. This stochastic calculus allows to solve some particular stochastic differential equations. We are currently investigating several extensions of this work. In order to apply this calculus to financial mathematics or to physics, it is necessary to study further the theory of stochastic differential equations driven by a mBm. This is the topic of the forthcoming paper [29].

The Tanaka formula we have obtained suggests that one can get several integral representations of local time with respect to mBm. Finally, since mBm is a Gaussian process, it seems also natural to investigate the links between the construction of stochastic integral with respect to mBm that we gave and the one provided by Malliavin calculus. An extension in higher dimension is also desirable.

9 Acknowledgments

The authors are thankful to Marc Yor for many helpful remarks and comments. They are also grateful to Erick Herbin for suggesting this research topic and to Sylvain Corlay for the simulations of mBm.

Appendix

A Bochner integral

All the following notions about the integral in the Bochner sense come from [22] p.72, 80 and 82 and from [27] p.247.

Definition A.1 (Bochner integral [27] p.247). *Let I be a subset of \mathbb{R} endowed with the Lebesgue measure. One says that $\Phi : I \rightarrow (\mathcal{S})^*$ is Bochner integrable on I if it satisfies the two following conditions:*

1. Φ is weakly measurable on I i.e $u \mapsto \langle \Phi(u), \varphi \rangle$ is measurable on I for every φ in (\mathcal{S}) .
2. There exists $p \in \mathbb{N}$ such that $\Phi(u) \in (\mathcal{S}_{-p})$ for almost every $u \in I$ and $u \mapsto \|\Phi(u)\|_{-p}$ belongs to $L^1(I)$.

The Bochner-integral of Φ on I is denoted $\int_I \Phi(s) ds$.

Properties A.1. *If $\Phi : I \rightarrow (\mathcal{S})^*$ is Bochner-integrable on I then*

1. there exists an integer p such that

$$\left\| \int_I \Phi(s) ds \right\|_{-p} \leq \int_I \|\Phi(s)\|_{-p} ds. \quad (\text{A.1})$$

2. Φ is also Pettis-integrable on I and both integrals coincide on I .

Remark A.1. *The previous property shows that there is no risk of confusion by using the same notation for both the Bochner integral and the Pettis integral.*

Theorem A.2. *Let $p \in \mathbb{N}$ and $(\Phi_n)_{n \in \mathbb{N}}$ be a sequence of processes from I to $(\mathcal{S})^*$ such that $\Phi_n(u) \in (\mathcal{S}_{-p})$ for almost every $u \in I$ and for every n . Assume moreover that Φ_n is Bochner-integrable on I for every n and that*

$$\lim_{(n,m) \rightarrow (+\infty, +\infty)} \int_I \|\Phi_m(s) - \Phi_n(s)\|_{-p} ds = 0.$$

Then there exists an $(\mathcal{S})^$ -process (almost surely (\mathcal{S}_{-p}) -valued), denoted Φ , defined and Bochner-integrable on I such that*

$$\lim_{n \rightarrow +\infty} \int_I \|\Phi(s) - \Phi_n(s)\|_{-p} ds = 0. \quad (\text{A.2})$$

Furthermore, if there exists an $(\mathcal{S})^*$ -process, denoted Ψ , which verifies (A.2), then $\Psi(s) = \Phi(s)$ for almost every s in I . Finally the following equality holds:

$$\lim_{n \rightarrow +\infty} \int_I \Phi_n(s) ds = \int_I \Phi(s) ds \quad \text{in } (\mathcal{S}^*).$$

B Proof of proposition 4.2

Let $B^{(h)}$ be a normalized mBm on \mathbb{R} with covariance function noted R_h . It is well known that one can define on the linear space $\text{span}_{\mathbb{R}}\{R_h(t, \cdot) : t \in \mathbb{R}\}$ an inner product, denoted \langle, \rangle_{R_h} , by $\langle R_h(t, \cdot), R_h(s, \cdot) \rangle_{R_h} := R_h(t, s)$ (see [25] p.120 ff.). Define Ξ_h the closure of $\text{span}_{\mathbb{R}}\{R_h(t, \cdot) : t \in \mathbb{R}\}$ for the norm $\|\cdot\|_{R_h}$. The space $(\Xi_h, \|\cdot\|_{R_h})$ is called the Cameron-Martin space (or Reproducing Kernel Hilbert Space (R.K.H.S.)) associated to the the Gaussian process $B^{(h)}$. Let $\tilde{\mathcal{E}}(\mathbb{R})$ denote the quotient space obtained by identifying all functions of $\mathcal{E}(\mathbb{R})$ which are equal almost everywhere. On $\tilde{\mathcal{E}}(\mathbb{R}) \times \tilde{\mathcal{E}}(\mathbb{R})$ define a bilinear form, noted \langle, \rangle_h , by $\langle \mathbb{1}_{[0,t]}, \mathbb{1}_{[0,s]} \rangle_h := R_h(t, s)$. Then \langle, \rangle_h is an inner product provided the linear map $\kappa_h : \tilde{\mathcal{E}}(\mathbb{R}) \rightarrow \Xi_h$ defined by $\kappa_h(\mathbb{1}_{[0,t]}) := R_h(t, \cdot)$, $t \in \mathbb{R}$, is injective. Define $\mathcal{I}_h := \overline{\text{vect}_{\mathbb{R}}\{B^{(h)}(t) : t \in \mathbb{R}\}}^{(L^2)}$ the first Wiener chaos of $B^{(h)}$. It is a well-known property of R.K.H.S. that the map $\tau_h : (\Xi_h, \|\cdot\|_{R_h}) \rightarrow (\overline{\text{span}_{\mathbb{R}}\{B^{(h)}(t) : t \in \mathbb{R}\}}^{(L^2)}, \|\cdot\|_{(L^2)})$, defined for all real t by $\tau_h(R_h(t, \cdot)) = B^{(h)}(t)$ is an isometry. As a result, κ_h is injective if and only if $\tau_h \circ \kappa_h$ is injective. The next proposition states that this is indeed the case for any continuous function h :

Proposition B.1. *Let h be a continuous function defined on \mathbb{R} and ranging in $(0, 1)$. The family $(B^{(h)}(t))_{t \in \mathbb{R}^*}$ is linearly independent on \mathbb{R} , i.e for every positive integer n , $(\beta_1, \beta_2 \cdots, \beta_n)$ in \mathbb{R}^n and $(t_1, t_2 \cdots, t_n)$ in $(\mathbb{R}^*)^n$, such that $t_i \neq t_j$ for $i \neq j$, the equality*

$$\sum_{j=1}^n \beta_j B^{(h)}(t_j) = 0 \quad \text{a.s.} \quad (\text{B.1})$$

implies $\beta_1 = \beta_2 = \cdots = \beta_n = 0$.

The proof of this proposition requires the following lemma, the proof of which is easy and left to the reader.

Lemma B.2. *Define, for $t \in \mathbb{R}$, the function $A_t : \mathbb{R} \rightarrow \mathbb{C}$ by $A_t(\xi) := \frac{e^{it\xi} - 1}{i\xi}$ if $\xi \neq 0$ and $A_t(0) := t$. Then, for all t , A_t is C^∞ on \mathbb{R} and verifies, for every $n \in \mathbb{N}$,*

$$A_t^{(n)}(0) = \frac{t (it)^n}{n+1}. \quad (\text{B.2})$$

where $A_t^{(n)}$ denotes the n^{th} derivative of A_t .

Proof. of proposition B.1. Let us use a proof by contradiction. By decreasing n if necessary we may always assume that $(\beta_1, \beta_2 \cdots, \beta_n)$ belongs to $(\mathbb{R}^*)^n$. Besides, thanks to (4.2) and lemma 4.3 (i), equality (B.1) also reads $\langle \cdot, \sum_{j=1}^n \beta_j M_{h(t_j)}(\mathbb{1}_{[0,t_j]}) \rangle = 0 \quad \text{a.s.}$ By taking Fourier transforms, we get $\sum_{j=1}^n \beta_j \widehat{M_{h(t_j)}(\mathbb{1}_{[0,t_j]})}(\xi) = 0 \quad \text{a.e.}$ Using (3.1) this yields

$$\sum_{j=1}^n \alpha_j |\xi|^{1/2-h(t_j)} \widehat{\mathbb{1}_{[0,t_j]}}(\xi) = 0, \quad \forall \xi \in \mathbb{R}^*, \quad (\text{B.3})$$

where we have defined, for j in $\{1; 2; \cdots; n\}$, $\alpha_j := \beta_j (c_{h(t_j)})^{-1}$. By re-arranging if necessary the $(t_i)_i$, we may assume without loss of generality that $h(t_1) \geq h(t_2) \geq \cdots \geq h(t_n)$. Let $\text{card}(A)$ denote the cardinal of the set A . We distinguish three cases.

First case: $\text{card}(\{h(t_1); h(t_2); \dots; h(t_n)\}) = 1$.

Since $h(t_1) = h(t_2) = \dots = h(t_n) =: H$, we get, by multiplying equality (B.3) by $|\xi|^{H-1/2}$ and taking inverse Fourier transform, $\sum_{j=1}^n \alpha_j \mathbb{1}_{[0, t_j]} = 0$ almost everywhere on \mathbb{R} . This entails that $\{\alpha_1; \alpha_2; \dots; \alpha_n\}$ and then $\{\beta_1; \beta_2; \dots; \beta_n\}$ is equal to $\{0\}$.

Second case: $h(t_1) > h(t_2)$. Using that $\widehat{\mathbb{1}_{[0, t]}}(\xi) = A_t(\xi)$, (B.3) reads:

$$\alpha_1 \left(\frac{e^{it_1\xi} - 1}{i\xi} \right) = - \sum_{j=2}^n \alpha_j |\xi|^{h(t_1) - h(t_j)} \left(\frac{e^{it_j\xi} - 1}{i\xi} \right), \quad \forall \xi \in \mathbb{R}^*. \quad (\text{B.4})$$

By lemma B.2 and taking the limit when ξ tends to 0 in (B.4), we get $\alpha_1 = 0$ which constitutes a contradiction.

Third case: $h(t_1) = h(t_2)$.

There exists an integer r in $\{2; 3; \dots; n-1\}$, (k_1, k_2, \dots, k_r) in $(\mathbb{N}^*)^r$ with $2 \leq k_1 < k_2 < \dots < k_r = n$, such that

$$\begin{aligned} h(t_1) = h(t_2) = \dots = h(t_{k_1}) &=: H_1 \\ h(t_{k_1+1}) = h(t_{k_1+2}) = \dots = h(t_{k_2}) &=: H_2 \\ \vdots & \\ h(t_{k_{r-1}+1}) = h(t_{k_{r-1}+2}) = \dots = h(t_{k_r}) &=: H_r, \end{aligned} \quad (\text{B.5})$$

where $1 > H_1 > H_2 > \dots > H_r > 0$. Note that when $r = 1$ we have $\text{card}(\{h(t_1); \dots; h(t_n)\}) = 1$ (treated in the first case) and when $r = n$ we have $\text{card}(\{h(t_1); \dots; h(t_n)\}) = n$ and then $h(t_1) > h(t_2)$ (treated in the second case). We hence assume from now that $2 \leq k_1 \leq n-1$ and $2 \leq r \leq n-1$.

Define the sets I_1, I_2, \dots, I_r by $I_1 := \{1; 2; \dots; k_1\}$, $I_2 := \{k_1 + 1; k_1 + 2; \dots; k_2\}$, \dots , $I_r := \{k_{r-1} + 1; k_{r-1} + 2; \dots; k_r\}$. Using lemma B.2, equality (B.3) can be rewritten as

$$\sum_{l=1}^r \sum_{j \in I_l} \alpha_j |\xi|^{1/2 - H_l} A_{t_j}(\xi) = 0, \quad \forall \xi \in \mathbb{R}^*. \quad (\text{B.6})$$

Lemma B.3. For every p in \mathbb{N}^* ,

$$\sum_{j \in I_1} \alpha_j t_j^p = 0. \quad (L_p)$$

Let us admit this lemma for the moment. The equalities (L_p) for p in $\{1; 2; \dots; k_1\}$ yield the following linear system:

$$\underbrace{\begin{pmatrix} t_1 & t_2 & \dots & t_{k_1-1} & t_{k_1} \\ t_1^2 & t_2^2 & \dots & t_{k_1-1}^2 & t_{k_1}^2 \\ \vdots & \vdots & \dots & \vdots & \vdots \\ t_1^{k_1} & t_2^{k_1} & \dots & t_{k_1-1}^{k_1} & t_{k_1}^{k_1} \end{pmatrix}}_{=:D} \begin{pmatrix} \alpha_1 \\ \alpha_2 \\ \vdots \\ \alpha_{k_1} \end{pmatrix} = \begin{pmatrix} 0 \\ 0 \\ \vdots \\ 0 \end{pmatrix}. \quad (\text{B.7})$$

The determinant of this system is a Vandermonde determinant which is non zero since all the t_i are distinct from each other. As the result, the only solution is $\alpha_1 = \alpha_2 = \dots = \alpha_{k_1} = 0$ which constitutes a contradiction and proves the proposition. \square

We now present a sketch of proof of lemma B.3.

Proof of lemma B.3. By multiplying both sides of equality (B.6) by $|\xi|^{H_1-1/2}$ and then taking the limit when ξ tends to 0, we get, using lemma B.2, $\sum_{j \in I_1} \alpha_j t_j = 0$, which is equality (L_1) . Now, fix p in \mathbb{N}^* . Starting from equality (B.6) we first

- multiply both sides of equality (B.6) by $|\xi|^{H_1-1/2}$ and call (B.6 bis) the resulting equality. For any ξ in \mathbb{R}^* , we then take the p^{th} derivative of both sides of equality (B.6 bis) at point ξ . We call (E_1) the equality thus obtained. It reads:

$$\sum_{l=1}^r \sum_{j \in I_l} \alpha_j [|\xi|^{H_1 - H_l} A_{t_j}(\xi)]^{(p)} = 0, \quad \forall \xi \in \mathbb{R}^*, \quad (E_1)$$

where $[g(\xi)]^{(p)}$ denotes the p^{th} derivative of the p -times differentiable map $\xi \mapsto g(\xi)$.

Now, starting from (E_1) , we recursively perform the following operations successively for $l = 2, \dots, r$:

- multiply both sides of equality (E_{l-1}) by $|\xi|^{H_l - H_{l-1} + p}$ and call $(E_{l-1} \text{ bis})$ the resulting equality.

- take the p^{th} derivative of both sides of equality $(E_{l-1} \text{ bis})$ at every point ξ in \mathbb{R}^* and call (E_l) the resulting equality.

Equality (E_r) then reads:

$$\sum_{l=1}^r \sum_{j \in I_l} \alpha_j \times \underbrace{\left[\dots \left[\left[|\xi|^{H_1 - H_l} \cdot A_{t_j}^{(p)}(\xi) \right]^{(p)} \cdot |\xi|^{H_2 - H_1 + p} \right]^{(p)} \cdot |\xi|^{H_3 - H_2 + p} \right]^{(p)} \dots \left[|\xi|^{H_{r-1} - H_{r-2} + p} \right]^{(p)} \cdot |\xi|^{H_r - H_{r-1} + p} \right]^{(p)}}_{=:[\dots]_{l,j}^{(p)}(\xi)} = 0, \quad \forall \xi \in \mathbb{R}^*, \quad (E_r)$$

Lemma B.2 yields that $\lim_{\xi \rightarrow 0} \alpha_j A_{t_j}^{(p)}(\xi) = \frac{i^p}{p+1} \alpha_j t_j^{p+1}$. We want to let ξ tend to 0 in the previous equality. However, for (l, j) in $\{1; 2; \dots; r\} \times I_l$, $\lim_{\xi \rightarrow 0} [\dots]_{l,j}^{(p)}(\xi) = +\infty$. Nevertheless, it is easy to show

that, for every (l, j) in $\{1; 2; \dots; r\} \times I_l$, $\lim_{\xi \rightarrow 0} \frac{[\dots]_{l,j}^{(p)}(\xi)}{A_{t_j}^{(p)}(\xi) |\xi|^{H_r - H_l}}$ exists in \mathbb{C}^* and is independent of j . Define

$c_l := \lim_{\xi \rightarrow 0} \frac{[\dots]_{l,j}^{(p)}(\xi)}{A_{t_{k_l}}^{(p)}(\xi) |\xi|^{H_r - H_l}}$, $l = 1, \dots, r$. Denote, for (l, j) in $\{1; 2; \dots; r\} \times I_l$, $U_{l,j} : \mathbb{R} \rightarrow \mathbb{C}$, the continuous map on \mathbb{R} such that $[\dots]_{l,j}^{(p)}(\xi) = c_l |\xi|^{H_r - H_l} A_{t_j}^{(p)}(\xi) (1 + U_{l,j}(\xi))$. Equality (E_r) then reads

$$\sum_{l=1}^r c_l \sum_{j \in I_l} \alpha_j |\xi|^{H_r - H_l} A_{t_j}^{(p)}(\xi) (1 + U_{l,j}(\xi)) = 0, \quad \forall \xi \in \mathbb{R}^*. \quad (B.8)$$

Upon multiplying both sides of the previous equality by $|\xi|^{H_1 - H_r}$ we get, for ξ in \mathbb{R}^*

$$c_1 \sum_{j \in I_1} \alpha_j A_{t_j}^{(p)}(\xi) (1 + U_{1,j}(\xi)) = - \sum_{l=2}^r c_l \sum_{j \in I_l} \alpha_j |\xi|^{H_1 - H_l} A_{t_j}^{(p)}(\xi) (1 + U_{l,j}(\xi)). \quad (B.9)$$

Since $H_1 > H_l$ for l in $\{2; \dots; r\}$, taking the limit when ξ tends to 0 in (B.9) and using lemma B.2 yields $c_1 i^p (p+1)^{-1} \sum_{j \in I_1} \alpha_j t_j^{p+1} = 0$, which is nothing but (L_{p+1}) . This ends the proof. \square

Remark B.4. Another way to establish that $R_H(\cdot, \cdot)$ defines an inner product on $\tilde{\mathcal{E}}(\mathbb{R})$ for H in $(0, 1)$ is to use (3.3) and (3.13).

References

- [1] E. Alos, O. Mazet, and D. Nualart. Stochastic Calculus with Respect to Gaussian Processes. *Annals of Probability*, 29(2):766–801, 2001.
- [2] A. Ayache, S. Cohen, and J. Lévy-Véhel. The covariance structure of multifractional Brownian motion, with application to long range dependence (extended version). *ICASSP*, Refereed Conference Contribution, 2000.
- [3] A. Benassi, S. Jaffard, and D. Roux. Elliptic Gaussian random processes. *Rev. Mat. Iberoamericana*, 13(1):19–90, 1997.
- [4] C. Bender. An Itô formula for generalized functionals of a fractional Brownian motion with arbitrary Hurst parameter. *Stochastic Processes and their Applications*, 104:81–106, 2003.

- [5] C. Bender. An S-transform approach to integration with respect to a fractional Brownian motion. *Bernouilli*, 9(6):955–983, 2003.
- [6] F. Biagini, A. Sulem, B. Øksendal, and N.N. Wallner. An introduction to white-noise theory and Malliavin calculus for fractional Brownian motion. *Proc. Royal Society, special issue on stochastic analysis and applications*, pages 347–372, 2004.
- [7] S. Bianchi and A. Pianese. Modelling stock price movements: multifractality or multifractionality? *Quantitative Finance*, 7(3):301–319, 2007.
- [8] J.Y. Chemin. Analyse harmonique et équation des ondes et de Schrödinger. Polycopié de cours, 2003.
- [9] I.M. Chilov and G.E. Gelfand. *Les distributions*, volume 1. Dunod, 1962.
- [10] I.M. Chilov and G.E. Gelfand. *Les distributions*, volume 2. Dunod, 1962.
- [11] L. Coutin. An Introduction to (Stochastic) Calculus with Respect to Fractional Brownian Motion. *Séminaire de Probabilités XL*, 1899:3–65, 2007.
- [12] L. Decreusefond and A. S. Üstünel. Stochastic analysis of the fractional Brownian motion. *Potential Anal.*, 10(2):177–214, 1999.
- [13] V. Dobric and F.M. Ojeda. Fractional Brownian fields, duality, and martingales. *IMS Lecture Notes, Monograph Series, High Dimensional Probability.*, 51:77–95, 2006.
- [14] A. Echelard, O. Barrière, and J. Lévy-Véhel. Terrain modelling with multifractional Brownian motion and self-regulating processes. In L. Bolc, R. Tadeusiewicz, L. J. Chmielewski, and K. W. Wojciechowski, editors, *Computer Vision and Graphics. Second International Conference, Warsaw, Poland, September 20-22, Proceedings, Part I ICCVG*, volume 6374 of *Lecture Notes in Computer Science*, pages 342–351. Springer, 2010.
- [15] R.J. Elliott and J. Van der Hoek. A general fractional white noise theory and applications to finance. *Math. Finance*, pages 301–330, 2003.
- [16] P.K. Friz and N.B. Victoir. *Multidimensional Stochastic Processes as Rough Paths: Theory and Applications*. Cambridge University Press, 2010.
- [17] M. Gradinaru, I. Nourdin, F. Russo, and P. Vallois. m -order integrals and generalized Itô’s formula: the case of a fractional Brownian motion with any Hurst index. *Ann. Inst. H. Poincaré Probab. Statist.*, 41(4):781–806, 2005.
- [18] E. Herbin. From n -parameter fractional Brownian motions to n -parameter multifractional Brownian motions. *Rocky Mountain J. of Math.*, 36-4:1249–1284, 2006.
- [19] E. Herbin and J. Lévy-Véhel. Stochastic 2 micro-local analysis. *Stochastic Processes and their Applications*, 119(7):2277–2311, 2009.
- [20] T. Hida. *Brownian Motion*. Springer-Verlag, 1980.
- [21] T. Hida, H. Kuo, J. Potthoff, and L. Streit. *White Noise. An Infinite Dimensional Calculus*, volume 253. Kluwer academic publishers, 1993.
- [22] E. Hille and R.S. Phillips. *Functional Analysis and Semi-Groups*, volume 31. American Mathematical Society, 1957.
- [23] F. Hirsch, B. Roynette, and M. Yor. From an Itô type calculus for Gaussian processes to integrals of log-normal processes increasing in the convex order. *To appear in Journal of the mathematical society of Japan*, 2011.
- [24] H. Holden, B. Øksendal, J. Ubøe, and T. Zhang. *Stochastic Partial Differential Equations, A Modeling, White Noise Functional Approach*. Springer, second edition, 2010.

- [25] S. Janson. *Gaussian Hilbert Spaces*, volume 129. Cambridge Tracts in Mathematics, 2008.
- [26] A. Kolmogorov. Wiener'sche Spiralen und einige andere interessante Kurven in Hilbert'schem Raum. *C. R. (Dokl.) Acad. Sci. URSS*, 26:115–118, 1940.
- [27] H.H. Kuo. *White Noise Distribution Theory*. CRC-Press, 1996.
- [28] H.H. Kuo. *Introduction to Stochastic Integration*. Springer, 2006.
- [29] J. Lebovits and J. Lévy-Véhel. Stochastic differential equations driven by a multifractional Brownian motion using white noise theory. 2011. In preparation.
- [30] M. Li, S.C. Lim, B.J. Hu, and H. Feng. Towards describing multi-fractality of traffic using local Hurst function. In *Lecture Notes in Computer Science*, volume 4488, pages 1012–1020. Springer, 2007.
- [31] B. Mandelbrot and J.W. Van Ness. Fractional Brownian motions, fractional noises and applications. *SIAM Rev.*, 10:422–437, 1968.
- [32] D. Nualart. *The Malliavin Calculus and related Topics*. Springer, 2006.
- [33] R. Peltier and J. Lévy-Véhel. Multifractional Brownian motion: definition and preliminary results, 1995. rapport de recherche de l'INRIA, n° 2645.
- [34] J. Picard. Representation formulae for the fractional Brownian motion. *Séminaire de Probabilités XLIII*, 43:3–72, 2011.
- [35] G. Samorodnitsky and M.S. Taqqu. *Stable Non-Gaussian Random Processes, Stochastic Models with Infinite Variance*. Chapman and Hall/C.R.C, 1994.
- [36] S.A. Stoev and M.S. Taqqu. How rich is the class of multifractional Brownian motions? *Stochastic Processes and their Applications*, 116:200–221, 2006.
- [37] S. Thangavelu. *Lectures of Hermite and Laguerre expansions*. Princeton University Press, 1993.
- [38] D.V. Widder. Positive temperatures on an infinite rod. *Trans. Amer. Math. Soc.*, 55:85–95, 1944.
- [39] M. Zähle. On the link between fractional and stochastic calculus. In *Stochastic dynamics (Bremen, 1997)*, pages 305–325. Springer, New York, 1999.